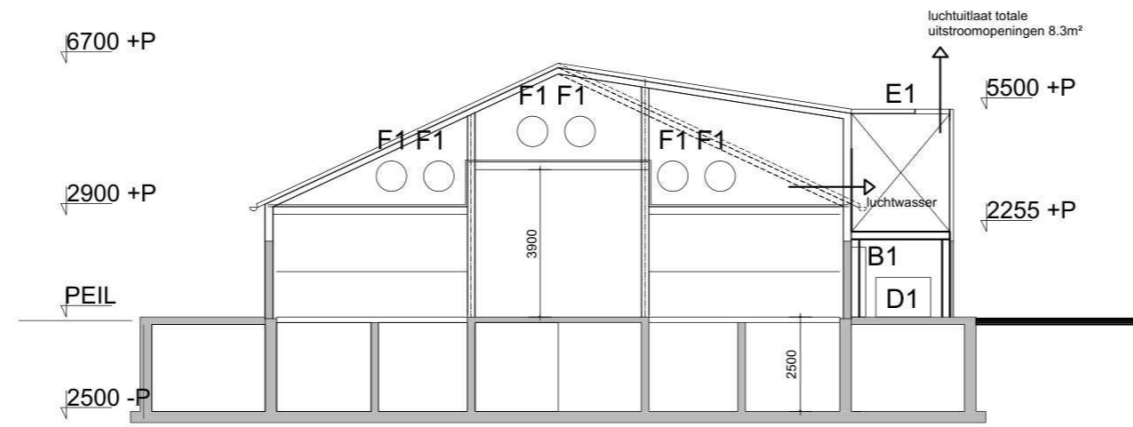
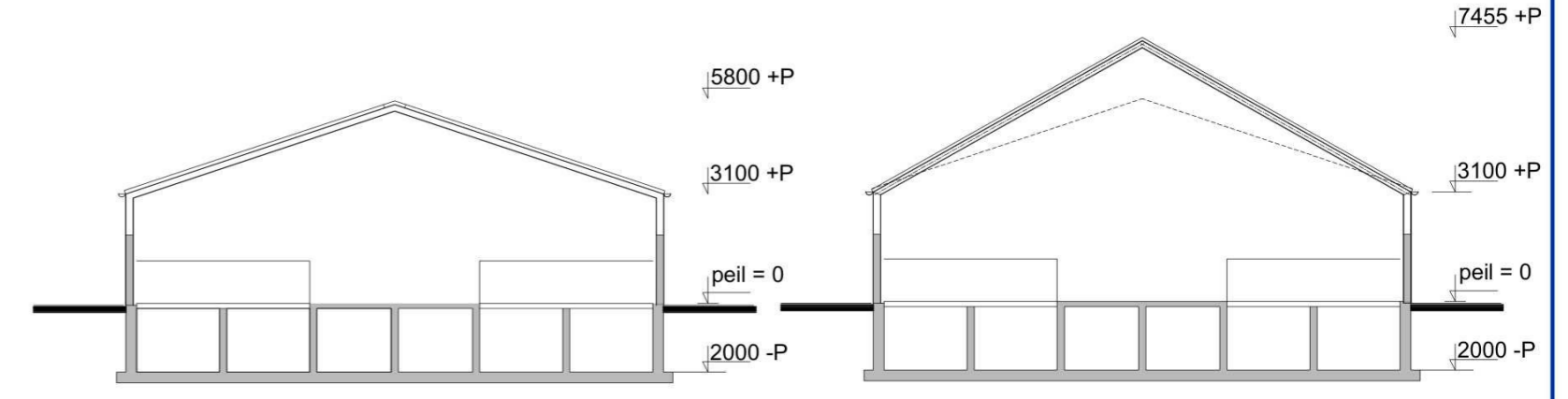


DOORSNEDE F-F: STAL 8+9



DOORSNEDE A-A: STAL 1

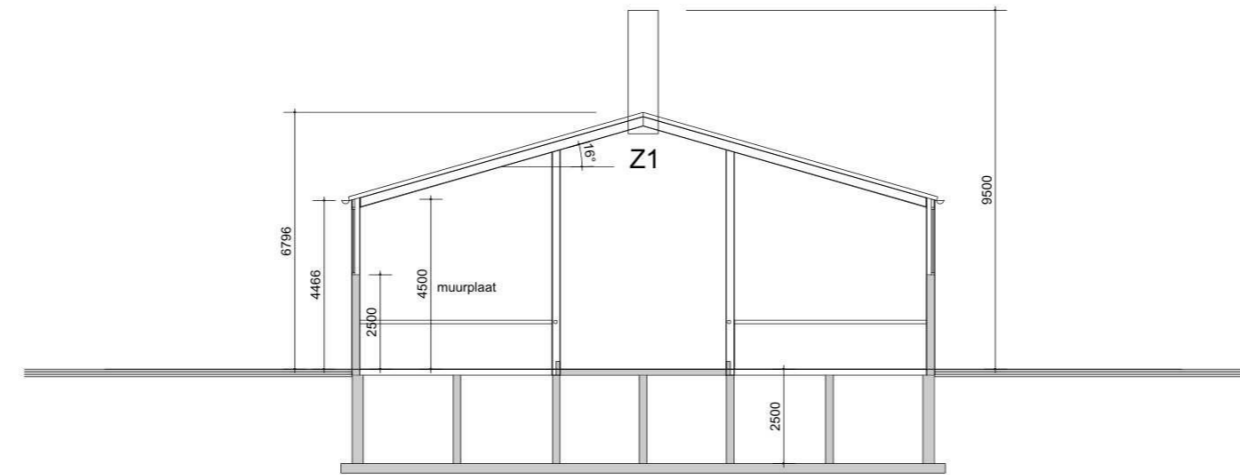


DOORSNEDE B: STAL 3

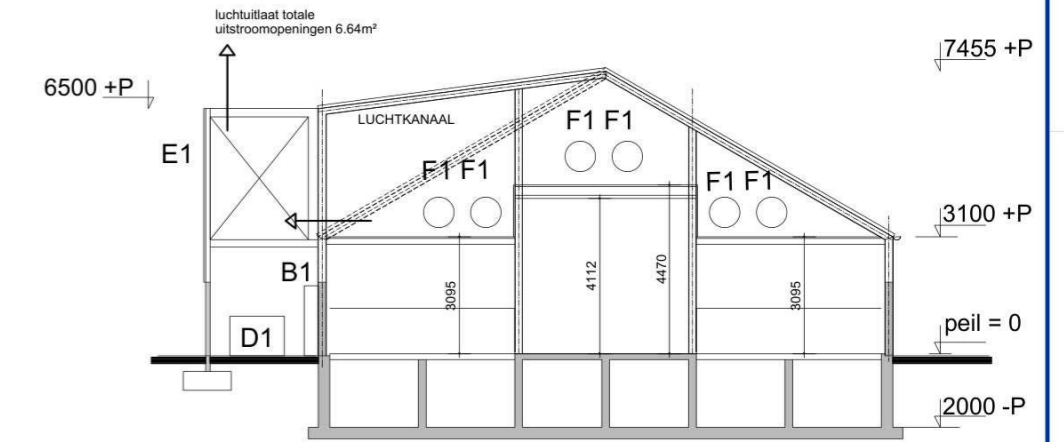
DOORSNEDE B1: STAL 3



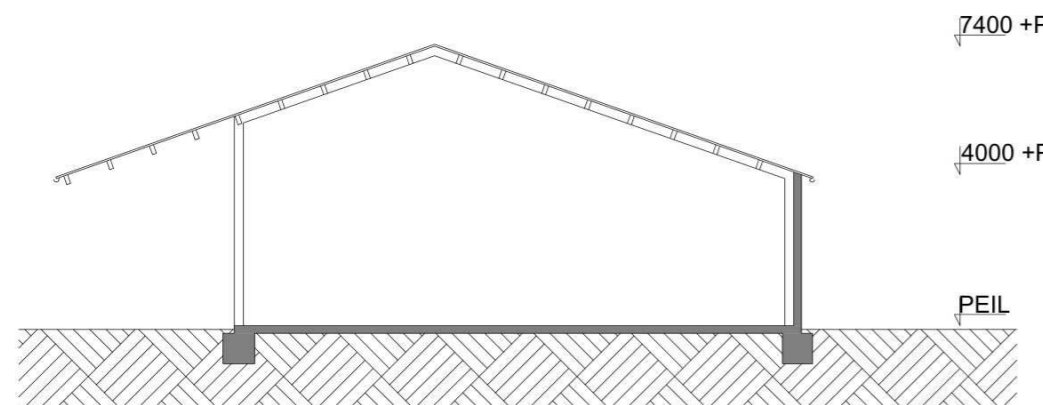
DOORSNEDE G-G: SLEUFSILO



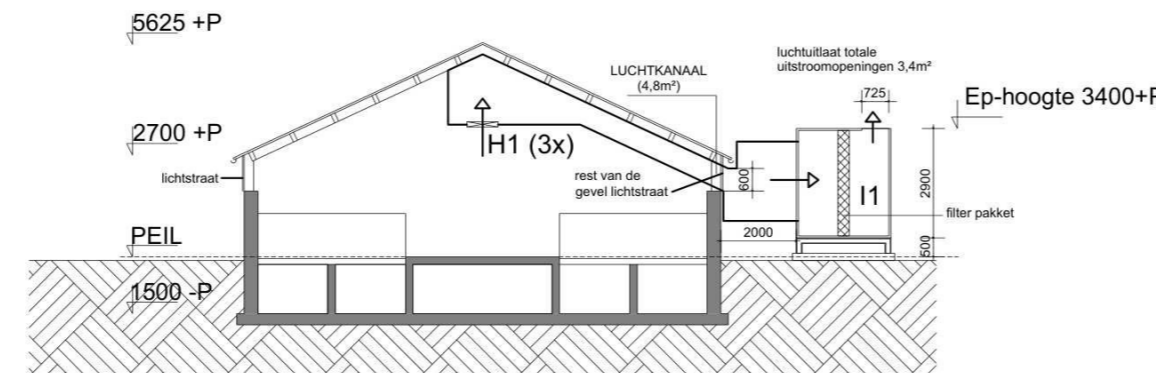
DOORSNEDE L-L: STAL 12



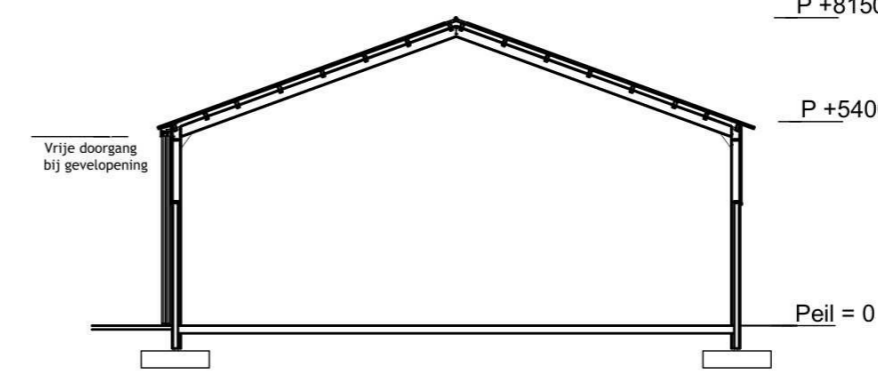
DOORSNEDE B2: STAL 3



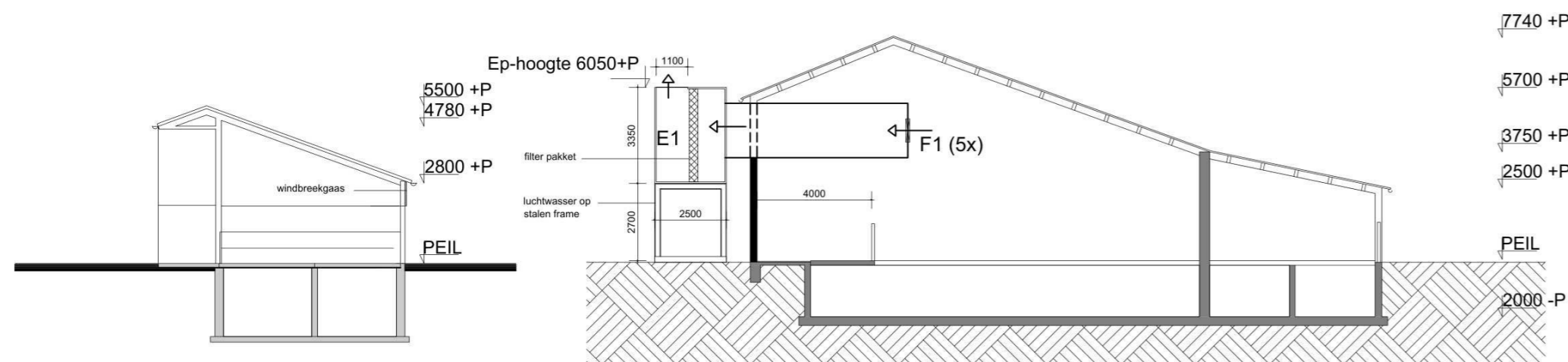
DOORSNEDE H-H: STAL / LOODS 5



DOORSNEDE C-C: STAL 4

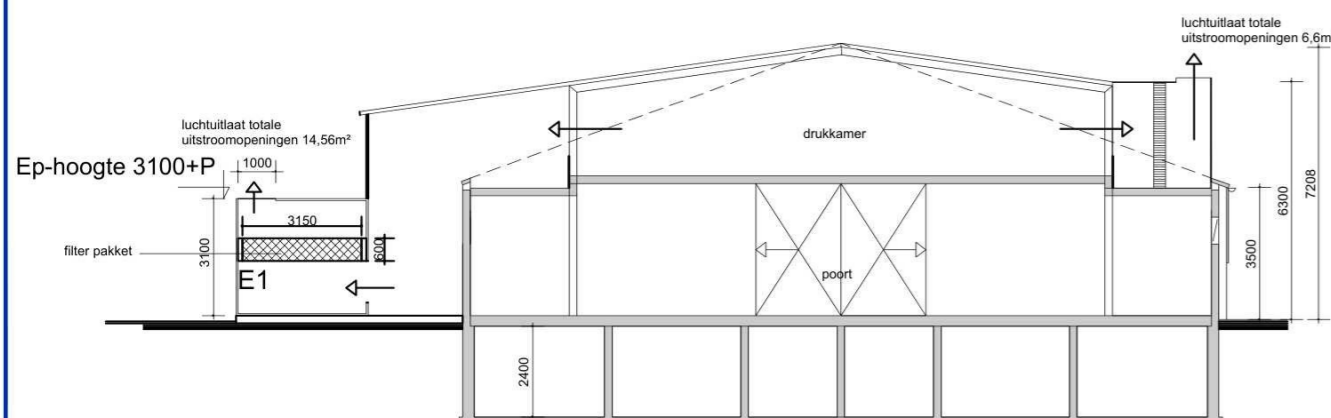


DOORSNEDE M-M: LOODS 13

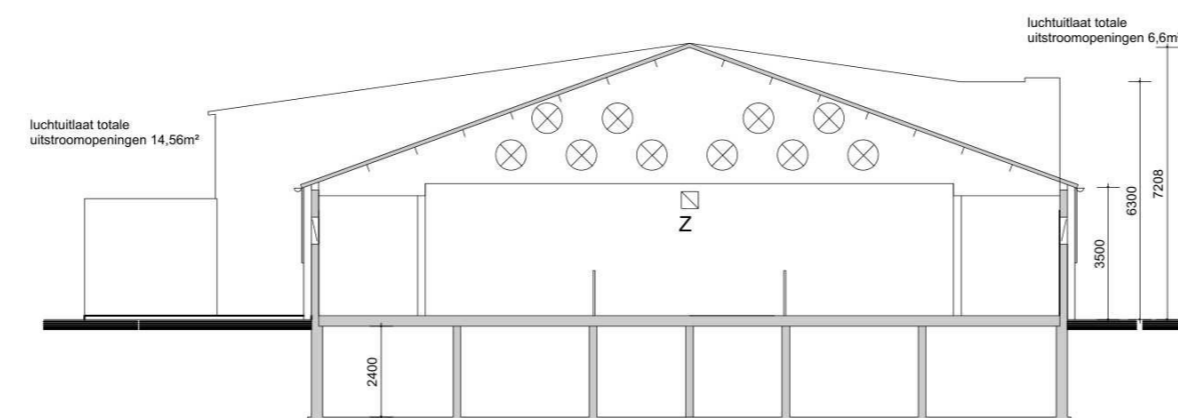


DOORSNEDE I-I: STAL 11

DOORSNEDE E-E: STAL 6+7

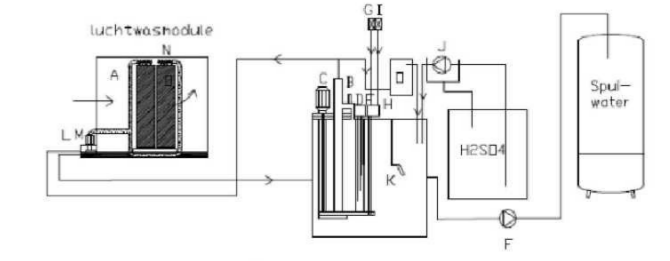


DOORSNEDE K-K: STAL 10



DOORSNEDE J-J: STAL 10

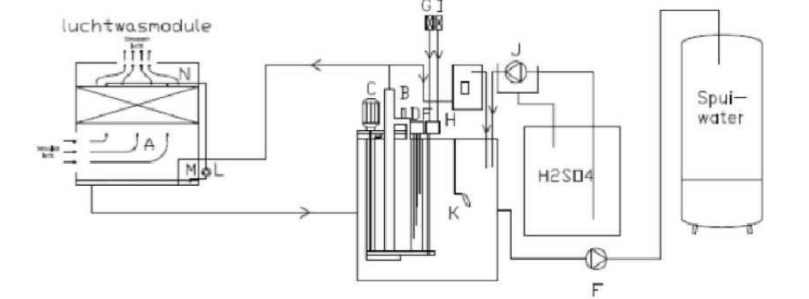
Principe luchtwassysteem



- A Luchtwasservulpakket
- B pH sensor
- C Circulatiepomp
- D Water-niveauregeling
- E Klep water-toevoer
- F Spuwaterpomp + spuwatermeter
- G Beveiligingsklep
- H Klep watersmering
- I Drukwachter
- J Zuurdoseerpomp in lekbak
- K Vlotter maximum niveau nengtank
- L pomp luchtwasser
- M Vlotter maximum niveau luchtwasser
- N Waterverdeelstelsysteem
- O Geleiddaarheidmeter

Schematische tekening dwarsstroom

Principe luchtwassysteem



- A Luchtwasservulpakket
- B pH sensor
- C Circulatiepomp
- D Water-niveauregeling
- E Klep water-toevoer
- F Spuwaterpomp + spuwatermeter
- G Beveiligingsklep
- H Klep watersmering
- I Drukwachter
- J Zuurdoseerpomp in lekbak
- K Vlotter maximum niveau nengtank
- L pomp luchtwasser
- M Vlotter maximum niveau luchtwasser
- N Waterverdeelstelsysteem
- O Geleiddaarheidmeter

Schematische tekening tegenstroom

WERK: Omgevingsvergunning milieu  
 ONDERWERP: Doornseden  
 PROJECTADRES: Ommezwansewijk 20 te Nederweert

PROJECTNR. 6350OM101  
 BLADNUMMER M-02  
 PROJECTLEIDER: [Redacted]  
 TEKENAAR: [Redacted]  
 DATUM: 23-04-2026

GEWIJZIGD: A, B, C, D, E  
 SCHAALEN: 1:200, 1:200, 1:200, 1:200, 1:200  
 FORMAAT: A2

OPDRACHTGEVER: Deurne B.V., Ommezwansewijk 20, 6031 NS Nederweert

**Definitief** G S A **Geling Advies**