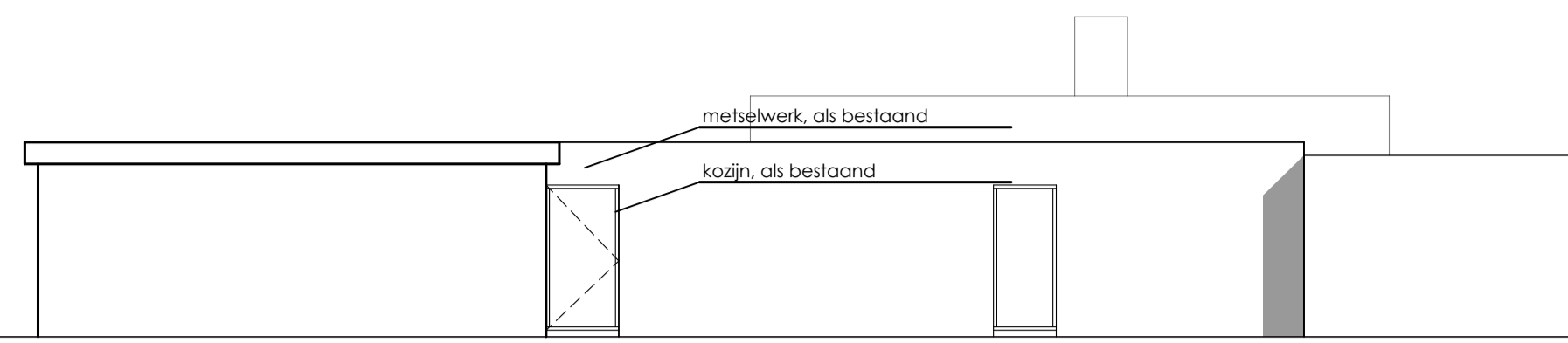
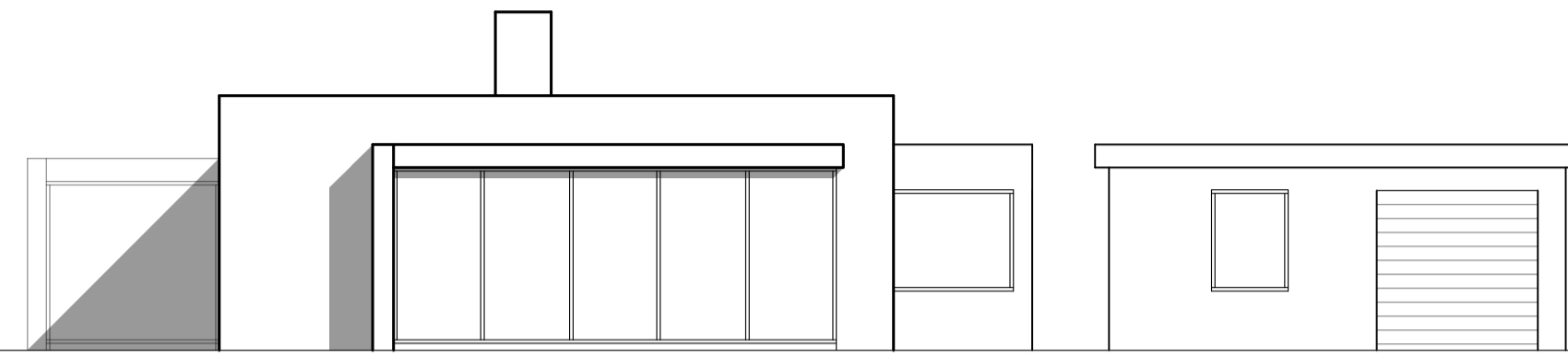


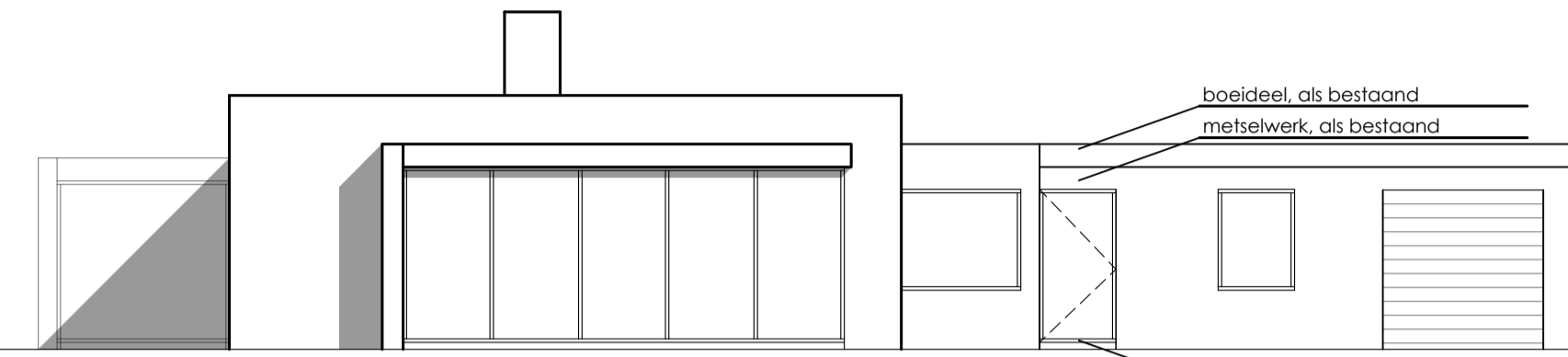
achtergevel bestaand



achtergevel nieuw



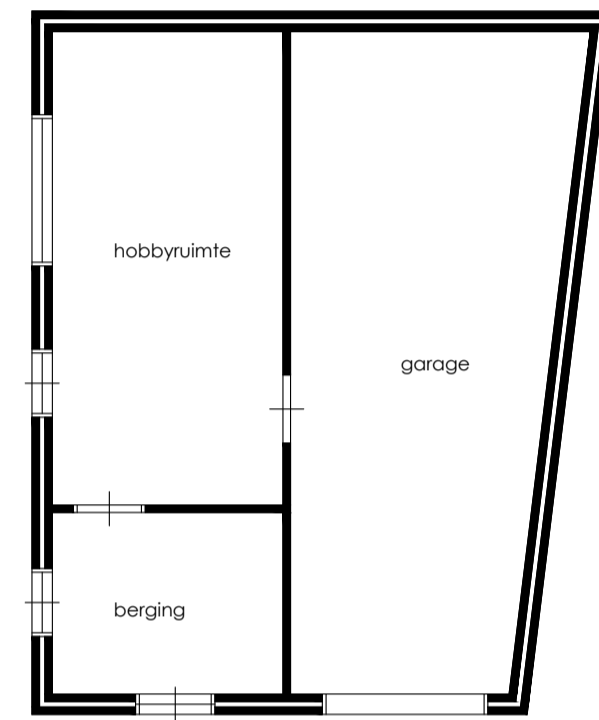
plattegrond bestaand



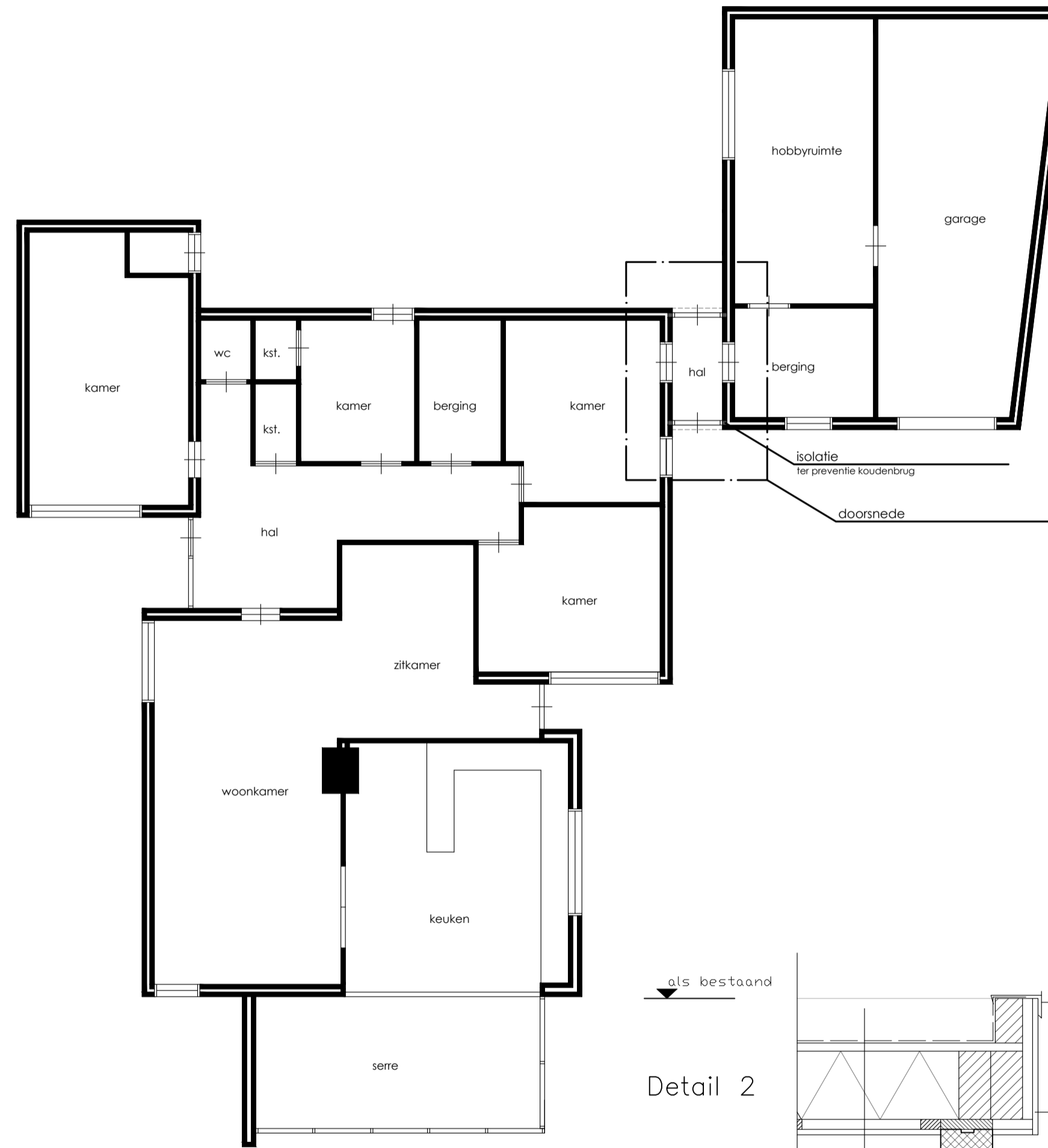
plattegrond nieuw



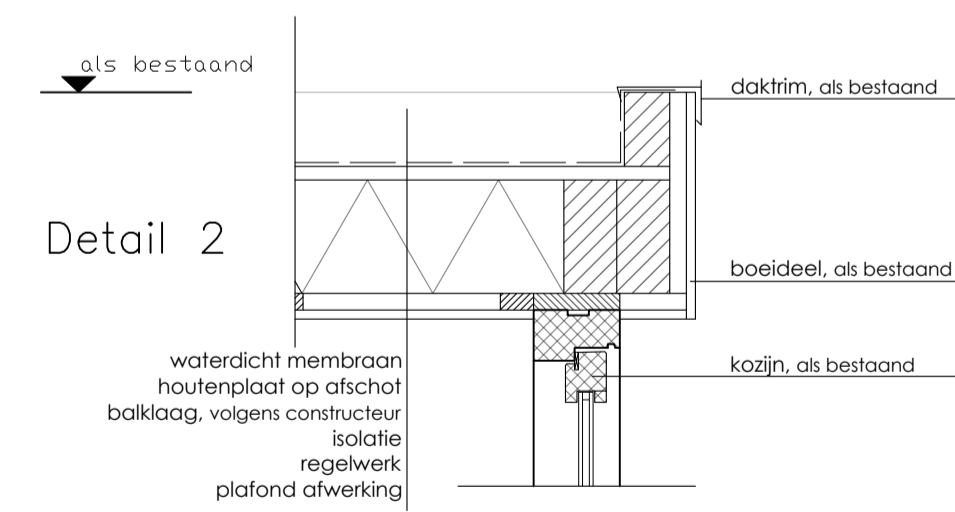
plattegrond bestaand



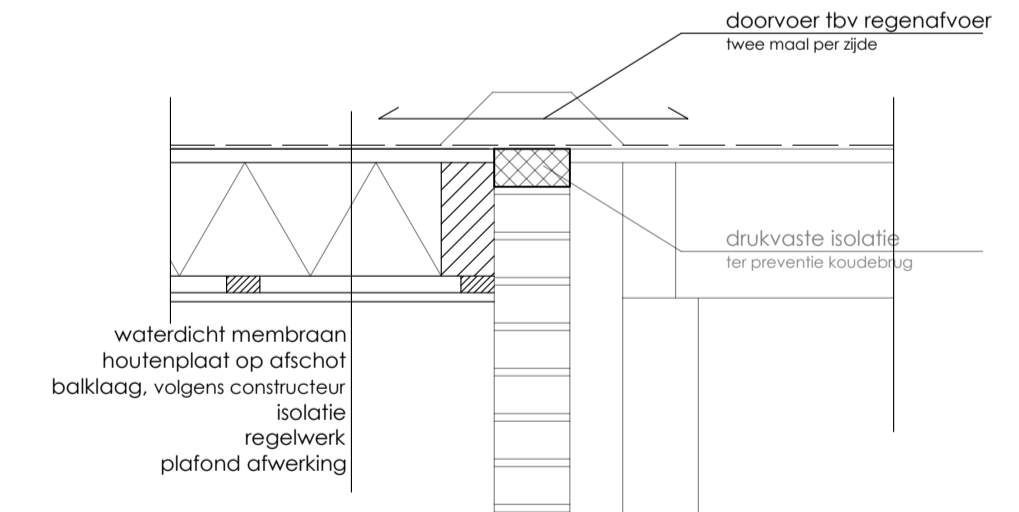
plattegrond nieuw



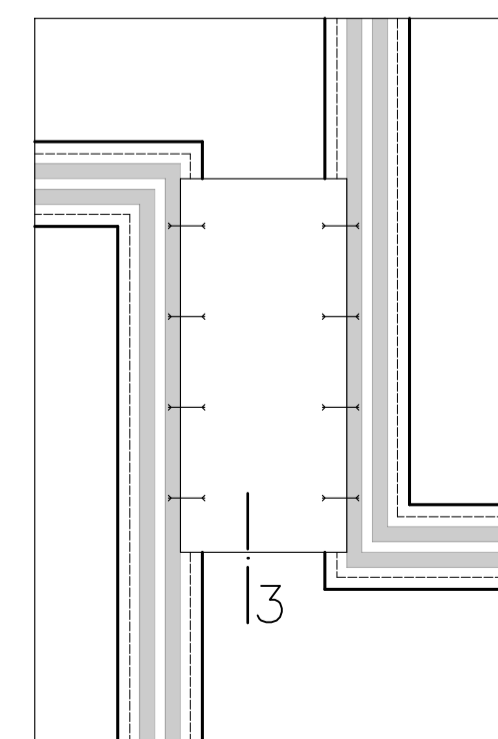
plattegrond nieuw



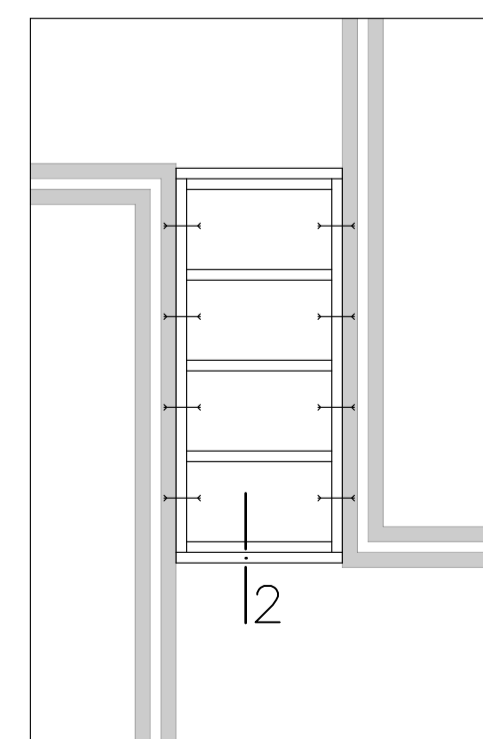
Detail 2



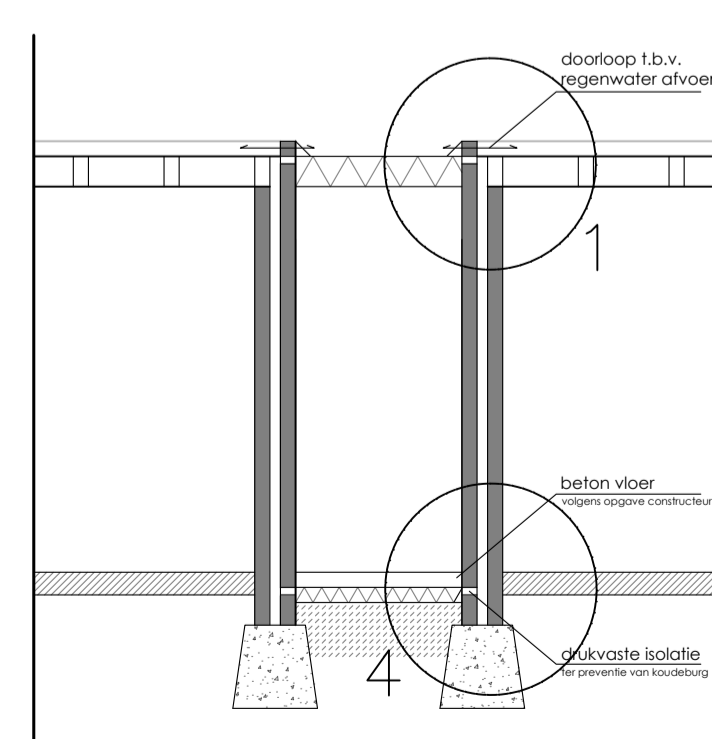
Detail 1



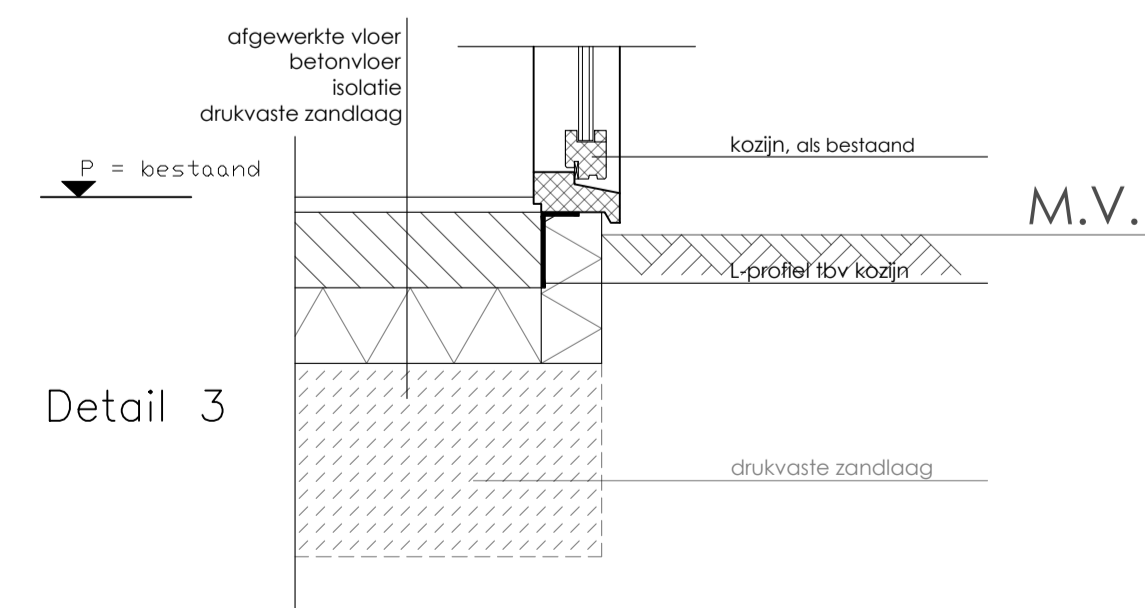
vloer-/funderingsplan



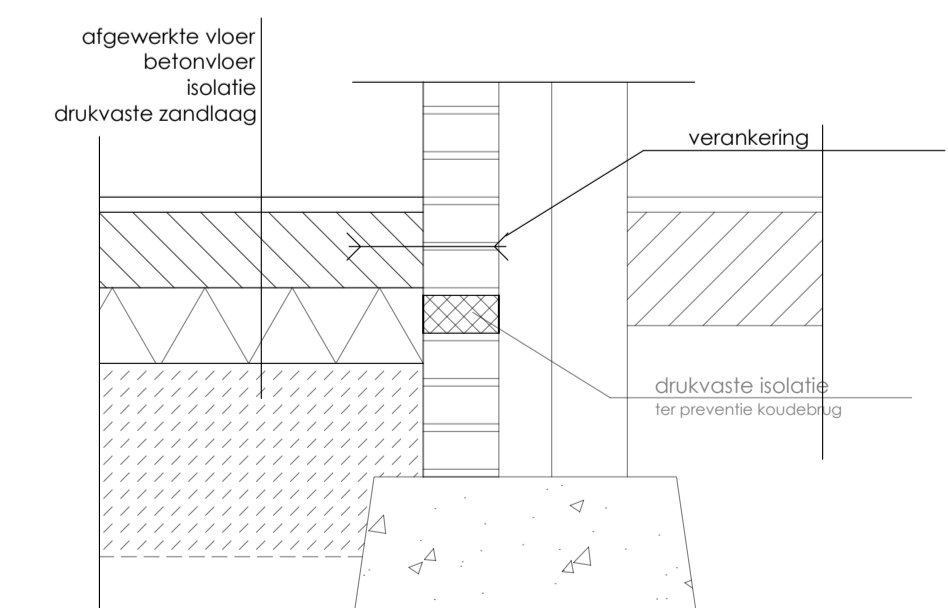
kapplan



doorsnede doorgang



Detail 3



Detail 4

Renvooi

Dennenveld 2, 5752 AD Deurne
Kadastrale gemeente Deurne, Sectie C, Perceel 3174
BVObestaand = +/-267m2
BVOnieuw = +/-270m2

Fundering: (volgens opgave constructeur)
Betonvloer op drukkoste zandlaag

Gevels:
metselwerk rood/bruin als bestaand

Gevelkozijnen:
Hardhouten kozijn, wit als bestaand

Beglazing:
Dubbel glas

Goot:
2 maal onderbrekingen van dakrand aan weerszijde

Balklaag/Gordingen:
volgens opgave constructeur

Dak:
Waterdicht membraan