



Waldorp en Bauer
zon studie

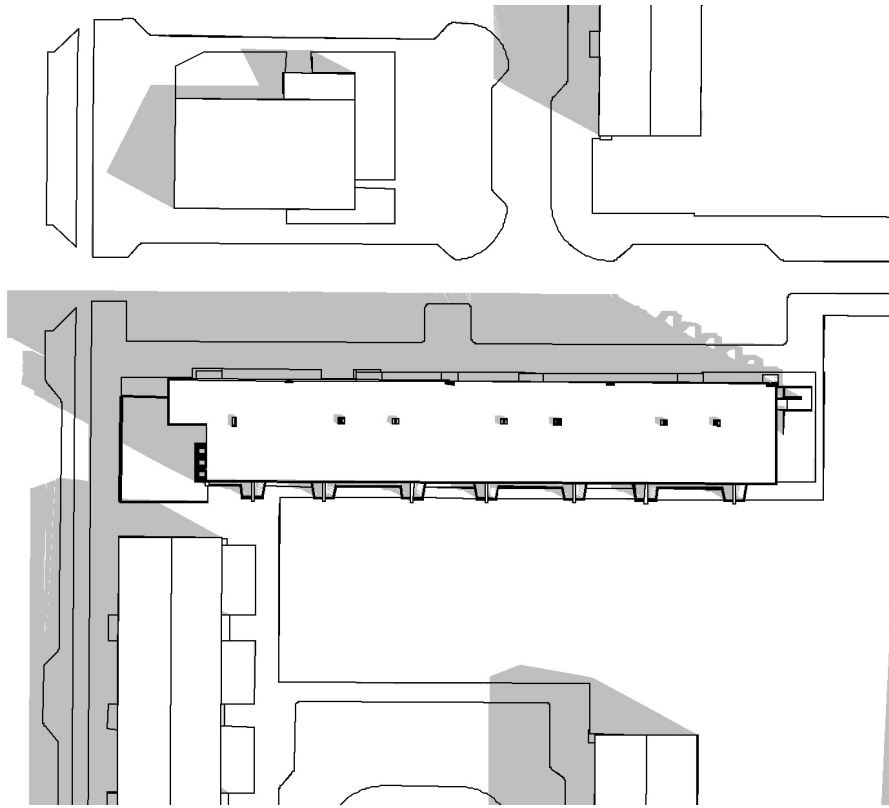
OFFICE

WINHOV

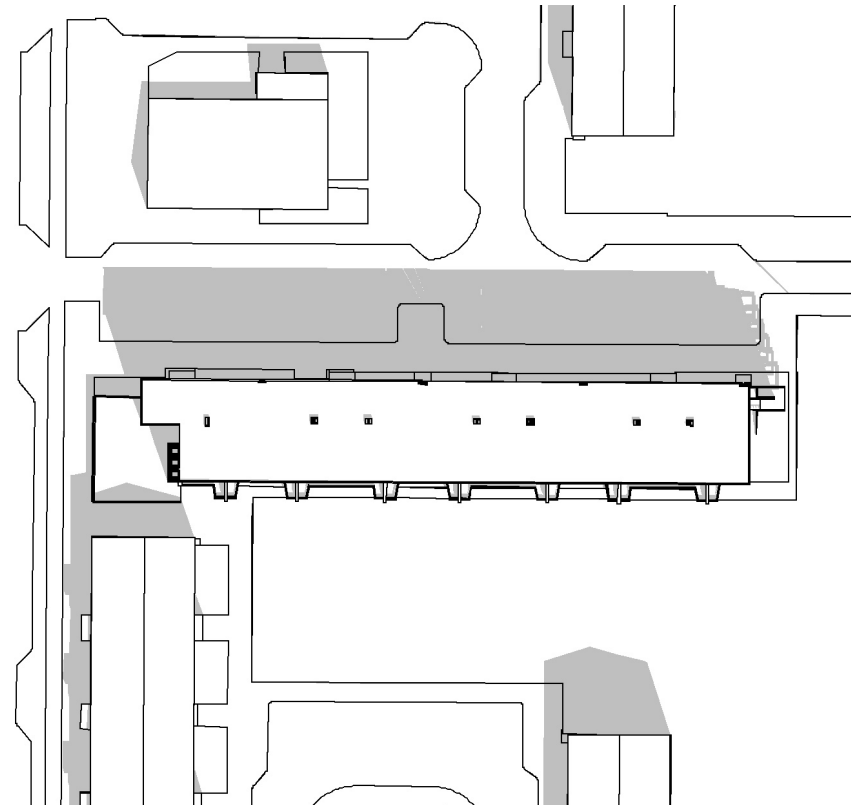
Waldorp en Bauer

Anton Waldorpstraat

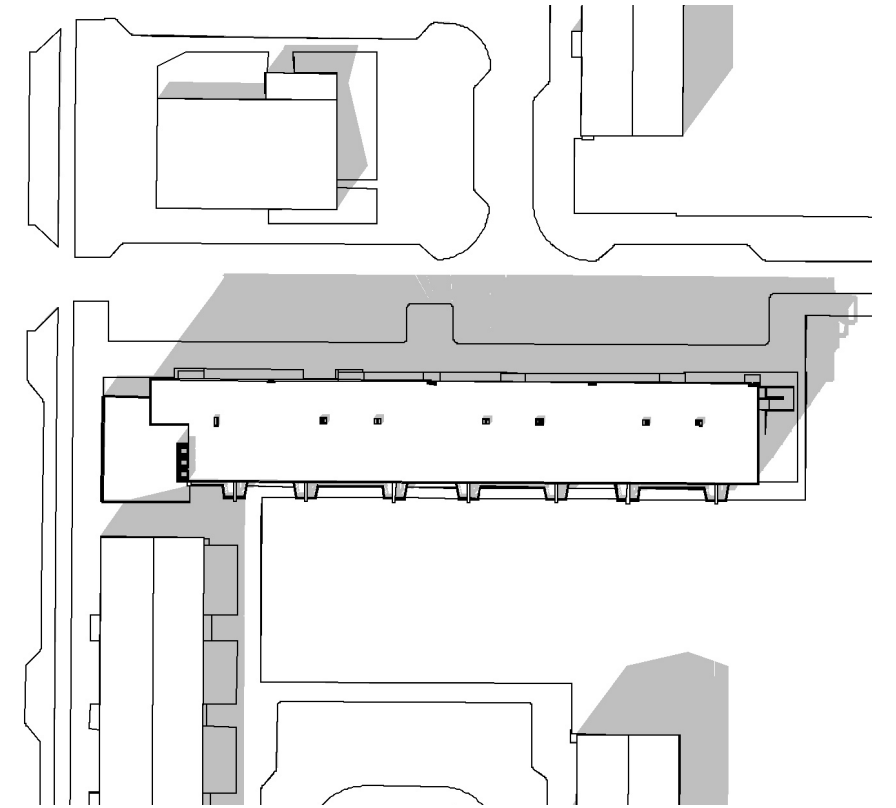
bestaande toestand



10:00

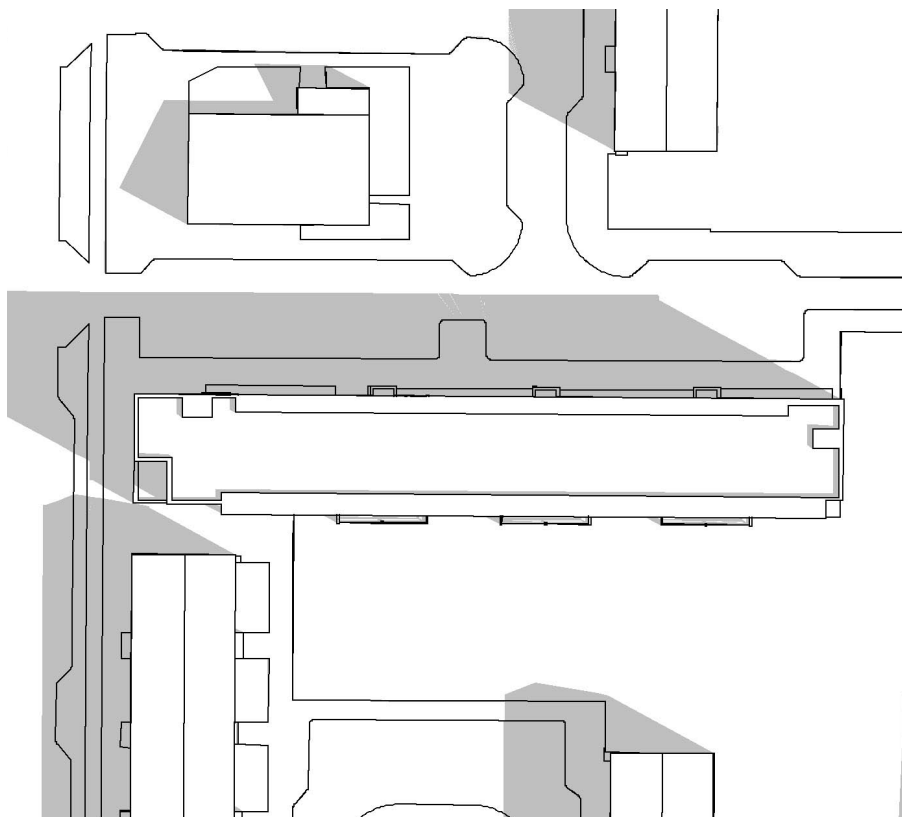


12:00

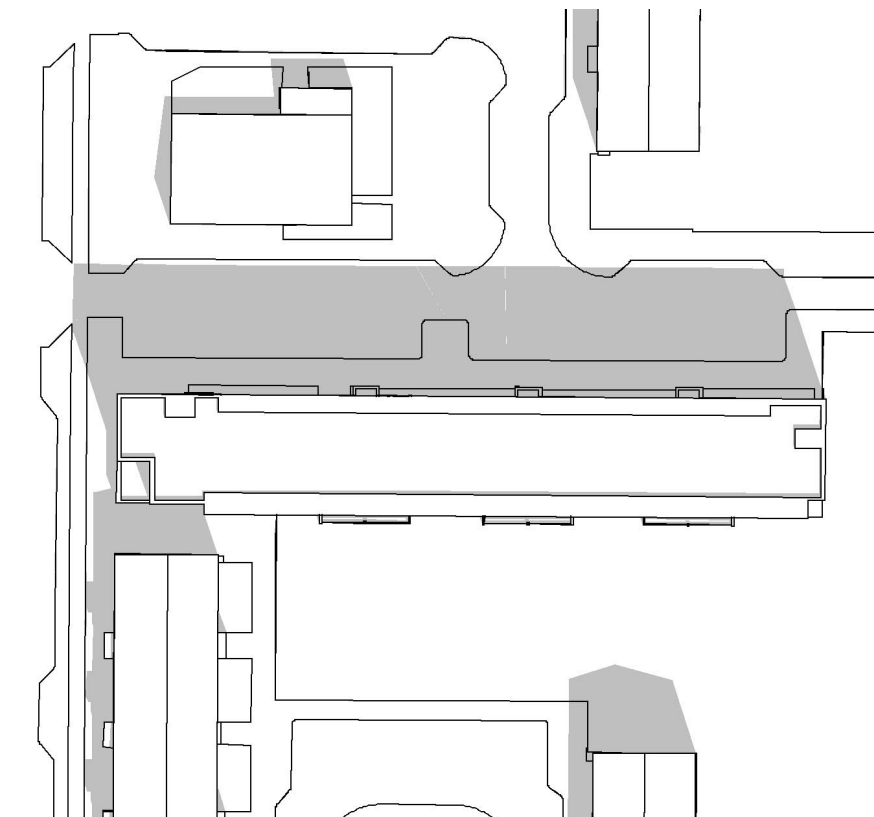


14:00

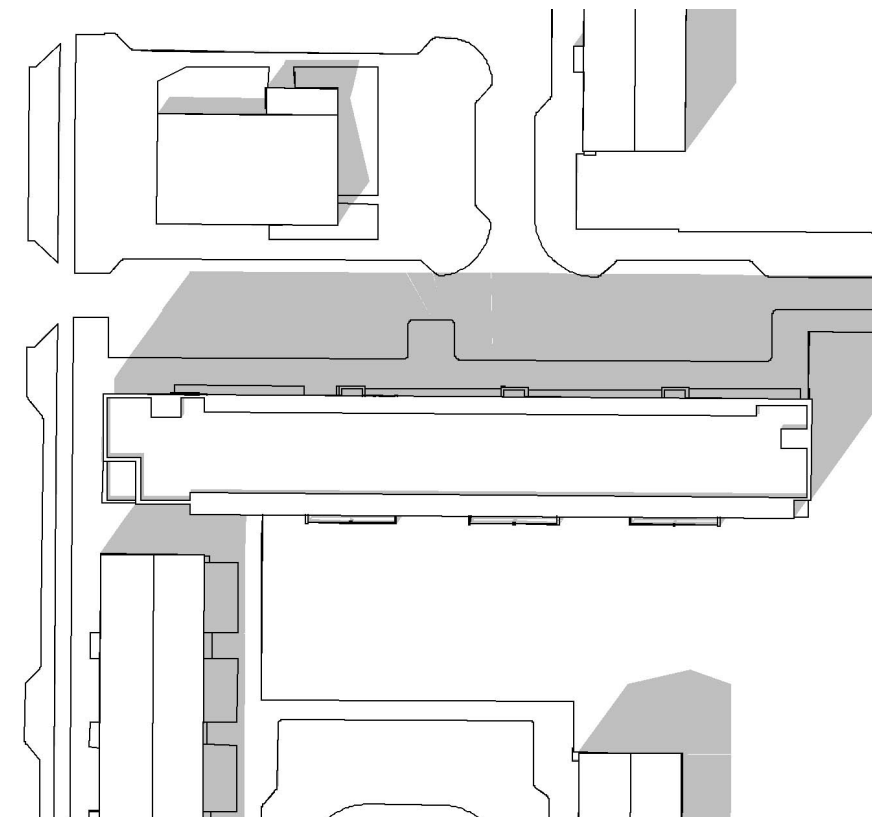
nieuwe toestand



10:00

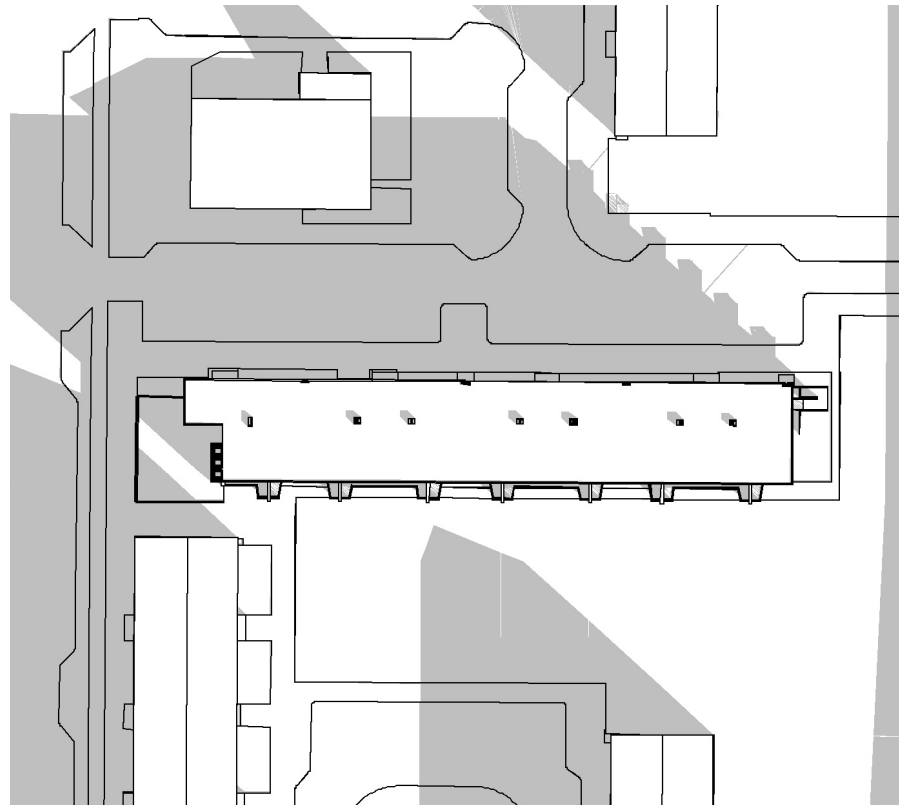


12:00

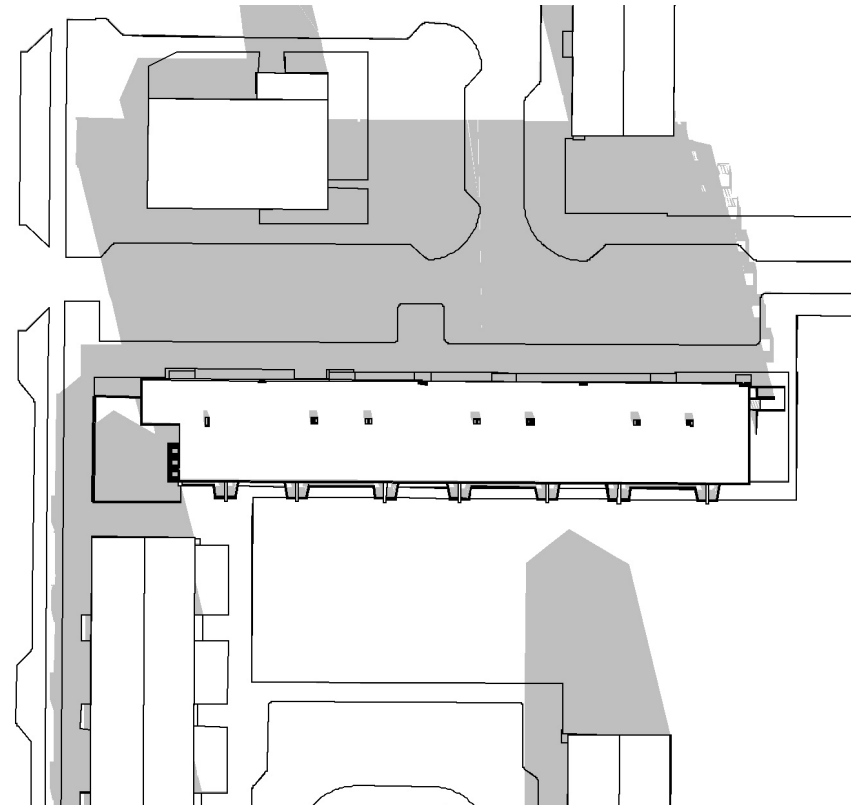


14:00

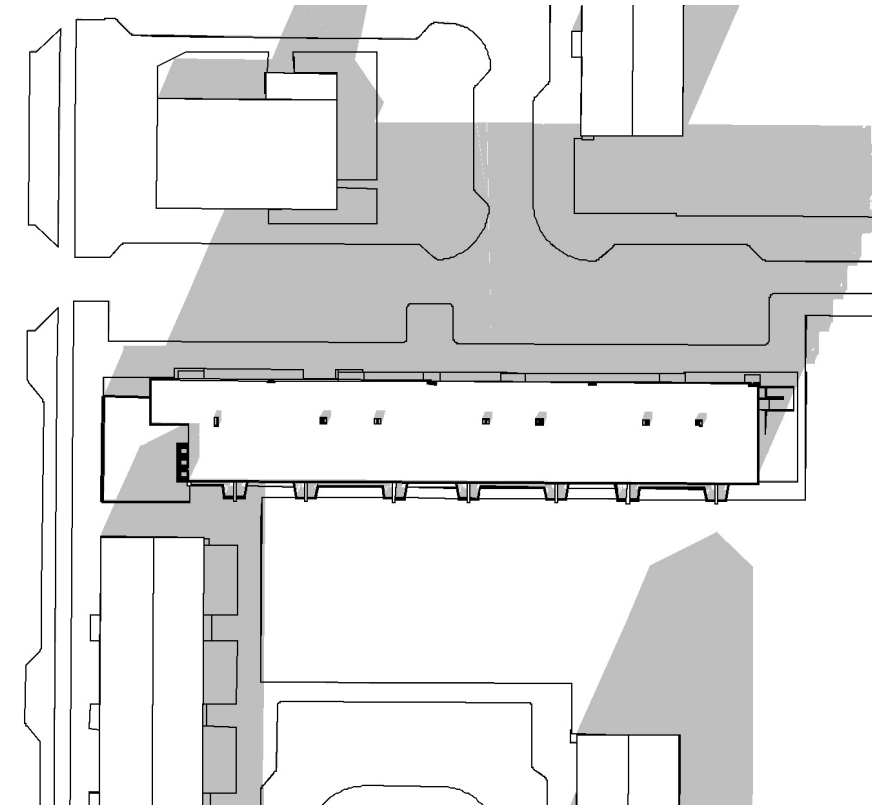
bestaande toestand



10:00

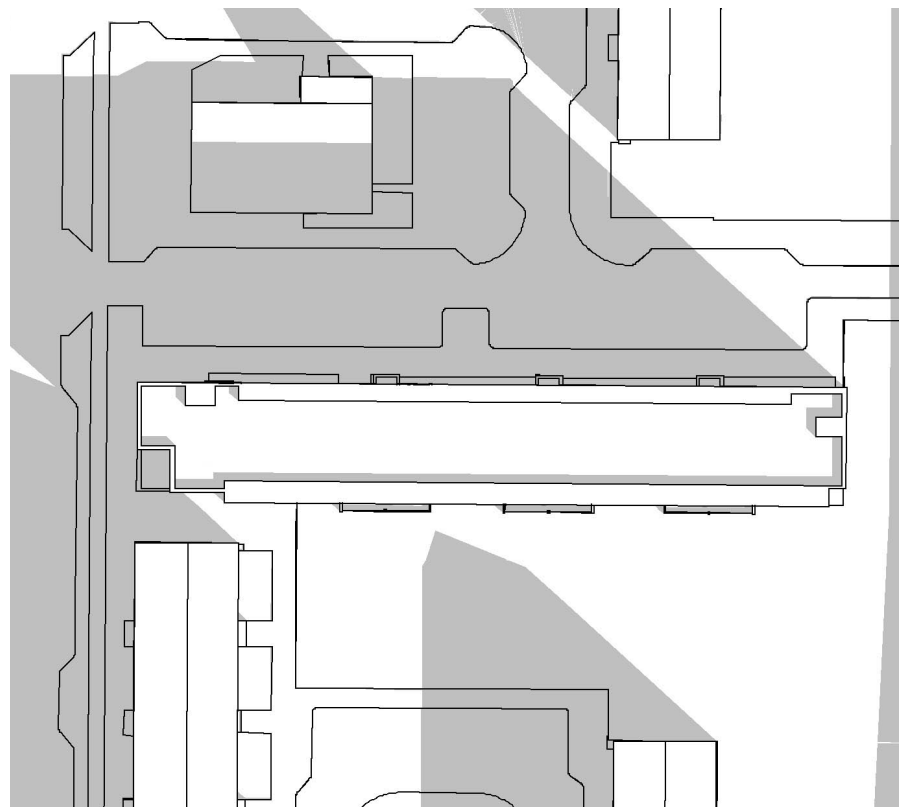


12:00

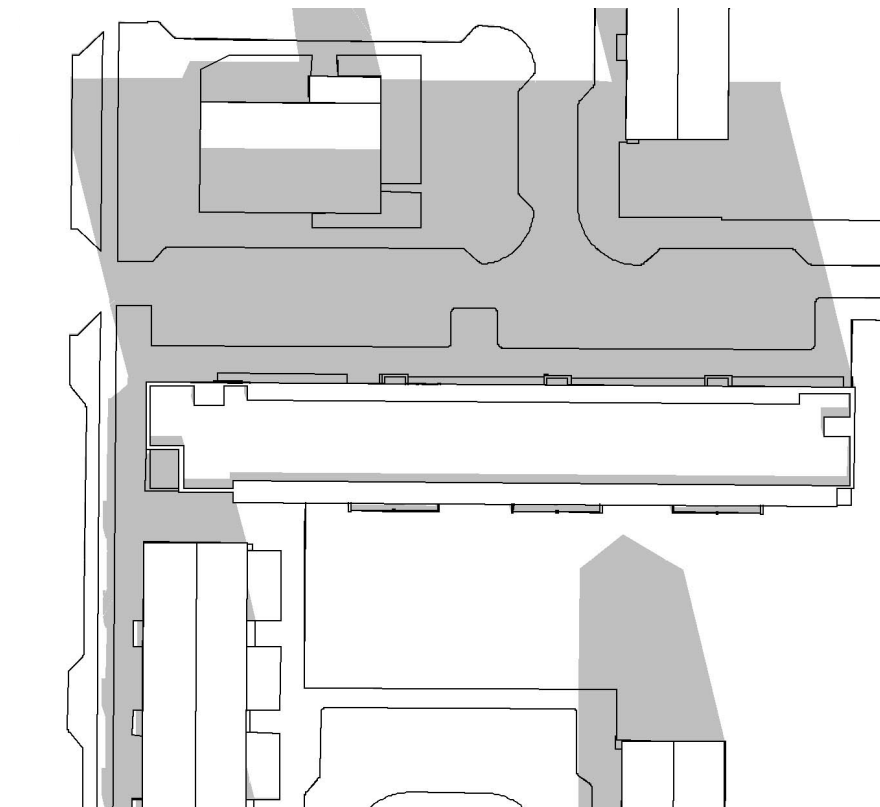


14:00

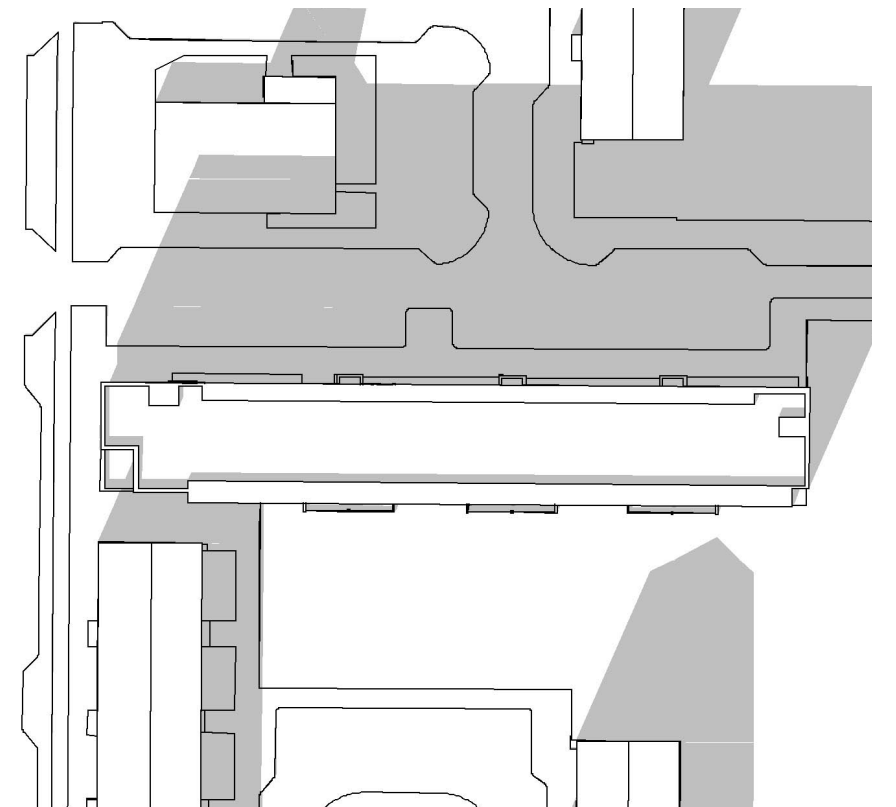
nieuwe toestand



10:00

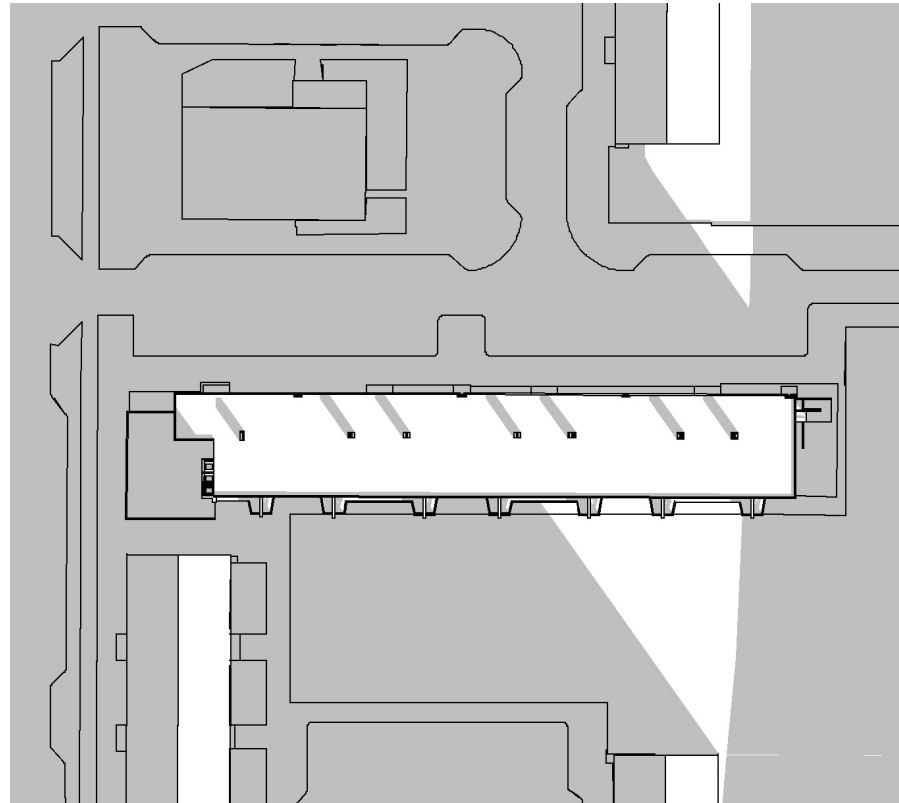


12:00

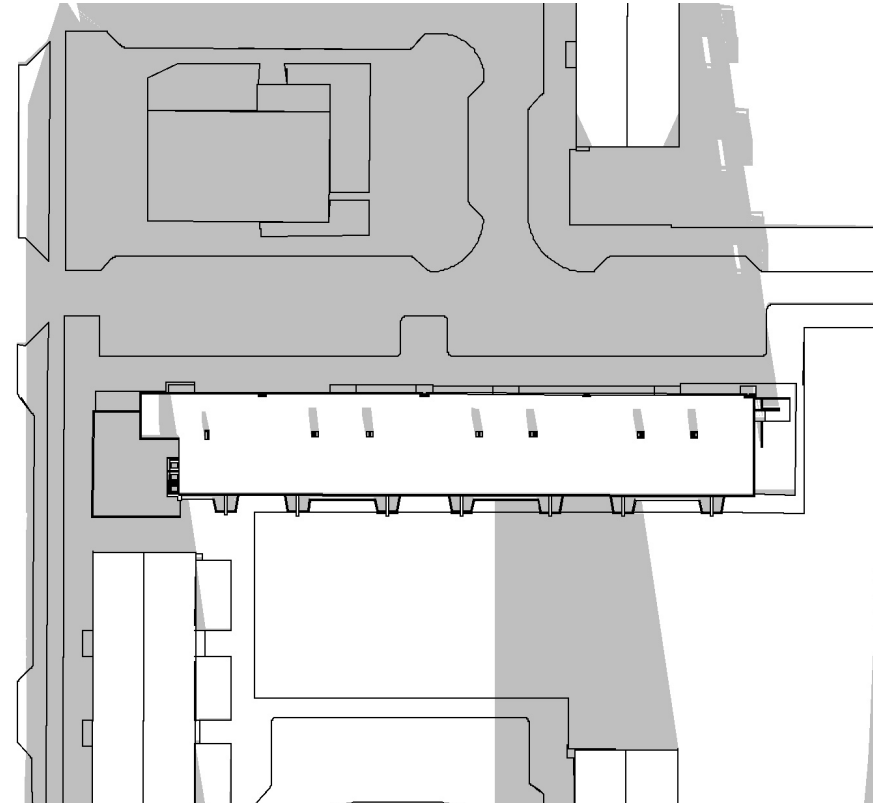


14:00

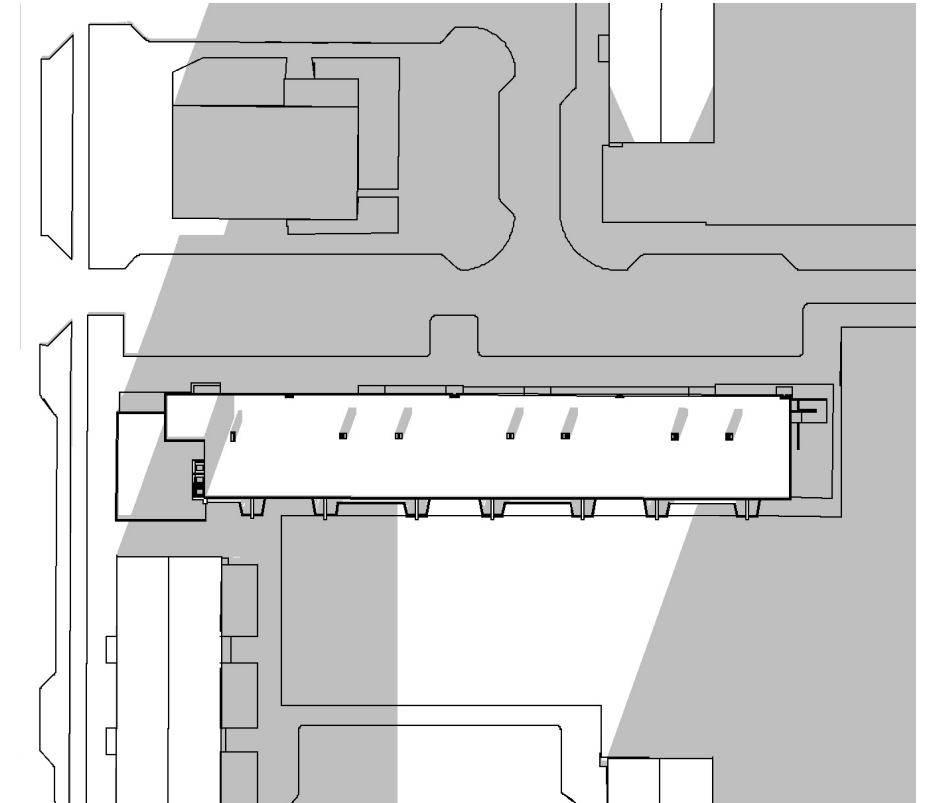
bestaande toestand



10:00

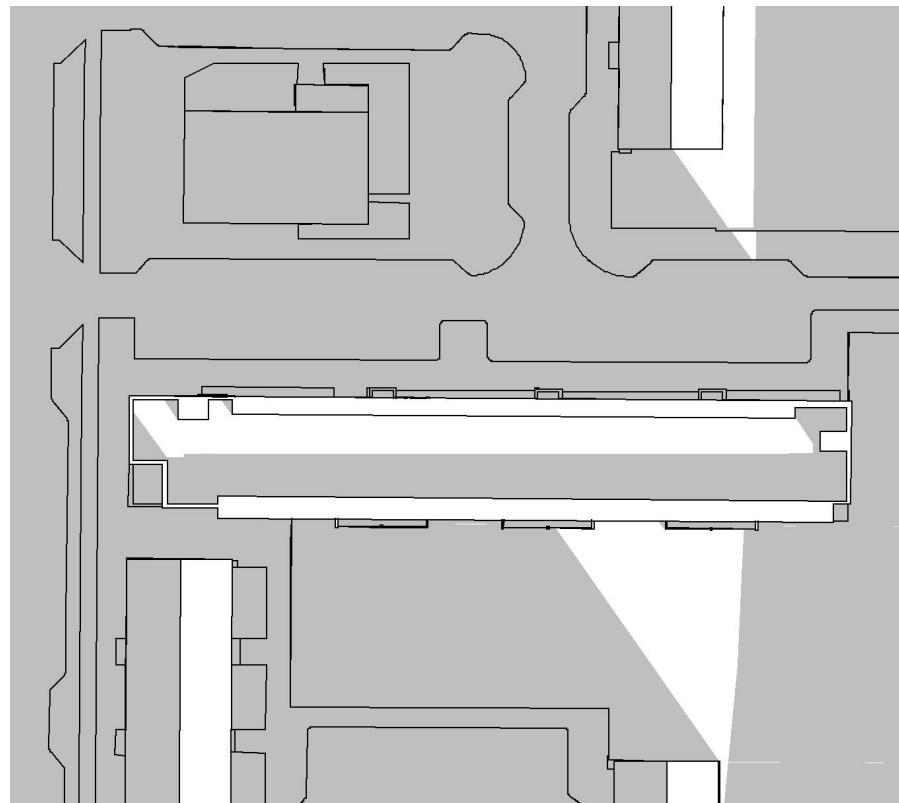


12:00

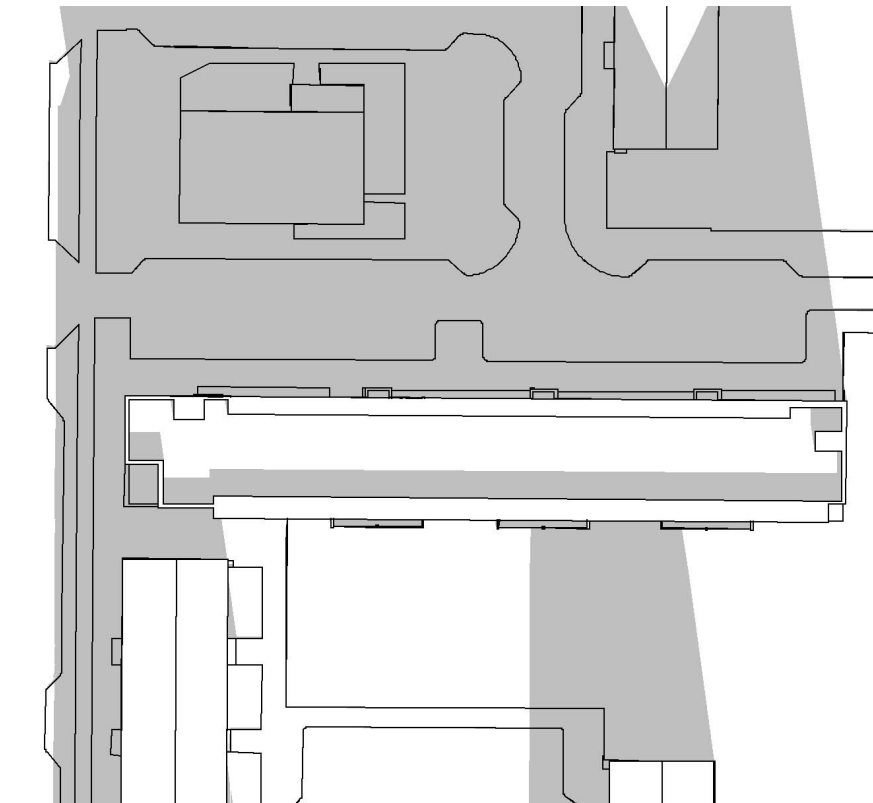


14:00

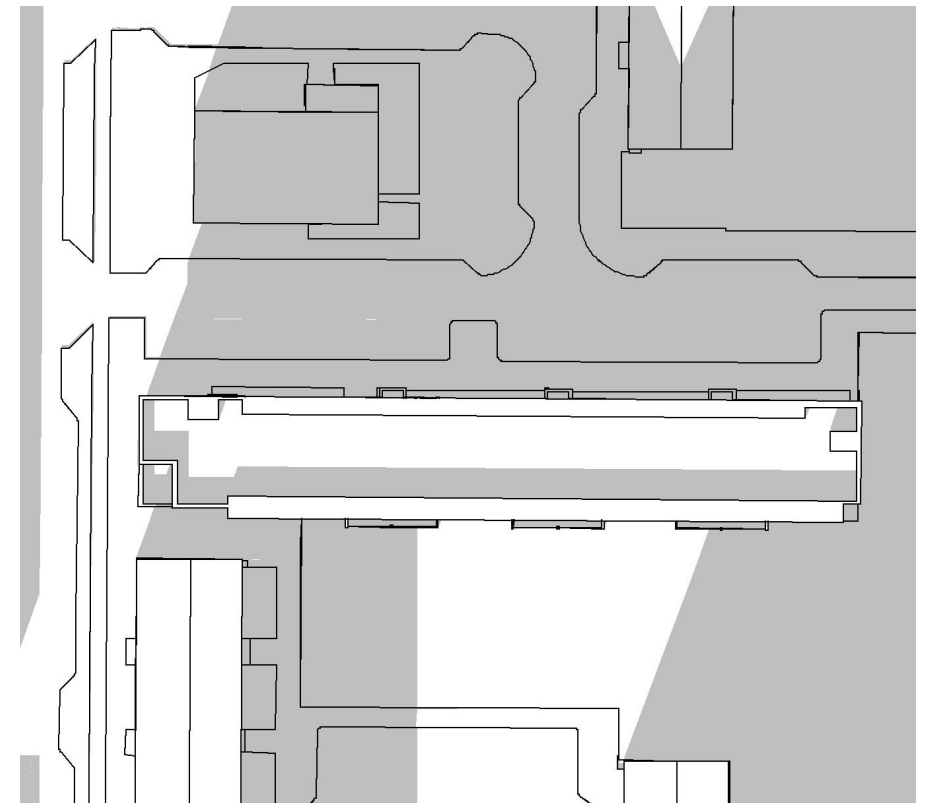
nieuwe toestand



10:00



12:00



14:00

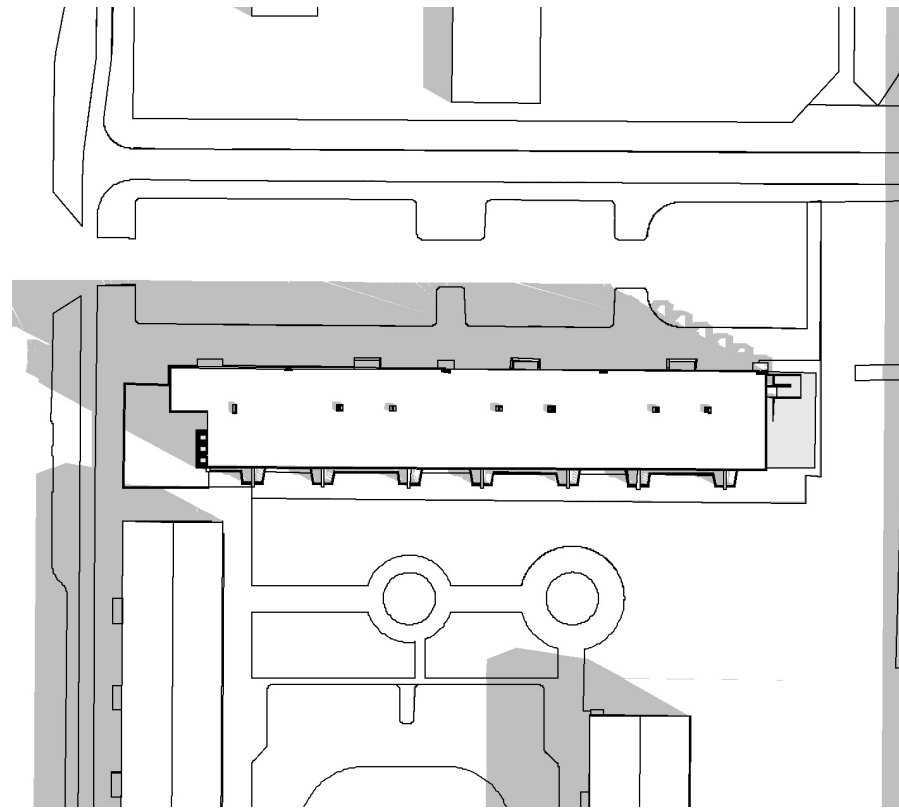
OFFICE

WINHOV

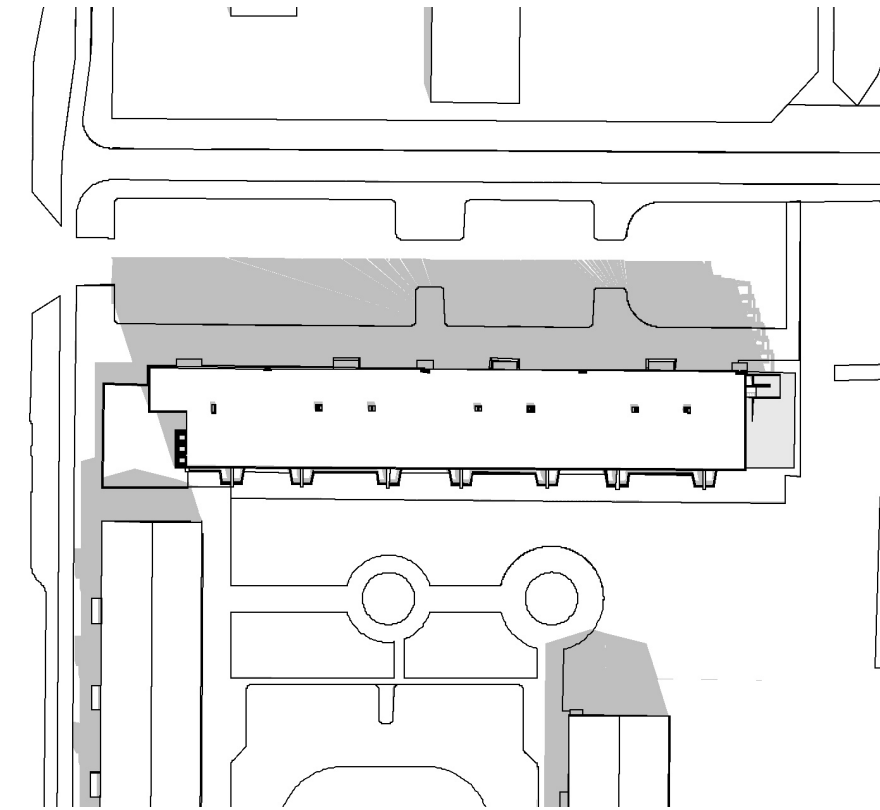
Waldorp en Bauer

Marius Bauerplantsoen

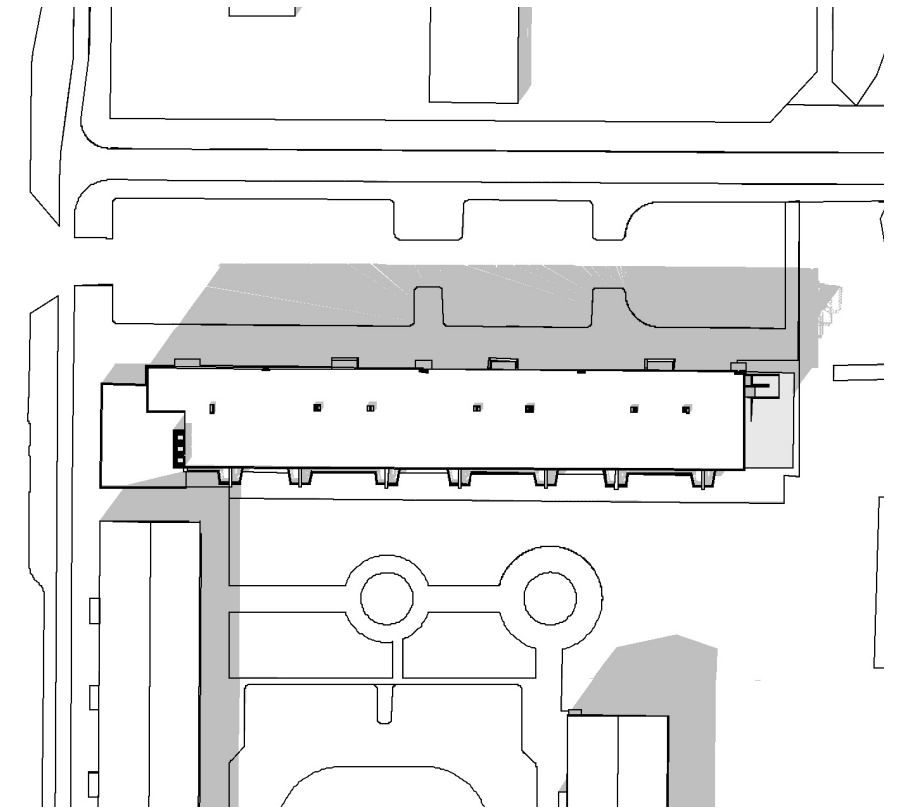
bestaande toestand



10:00

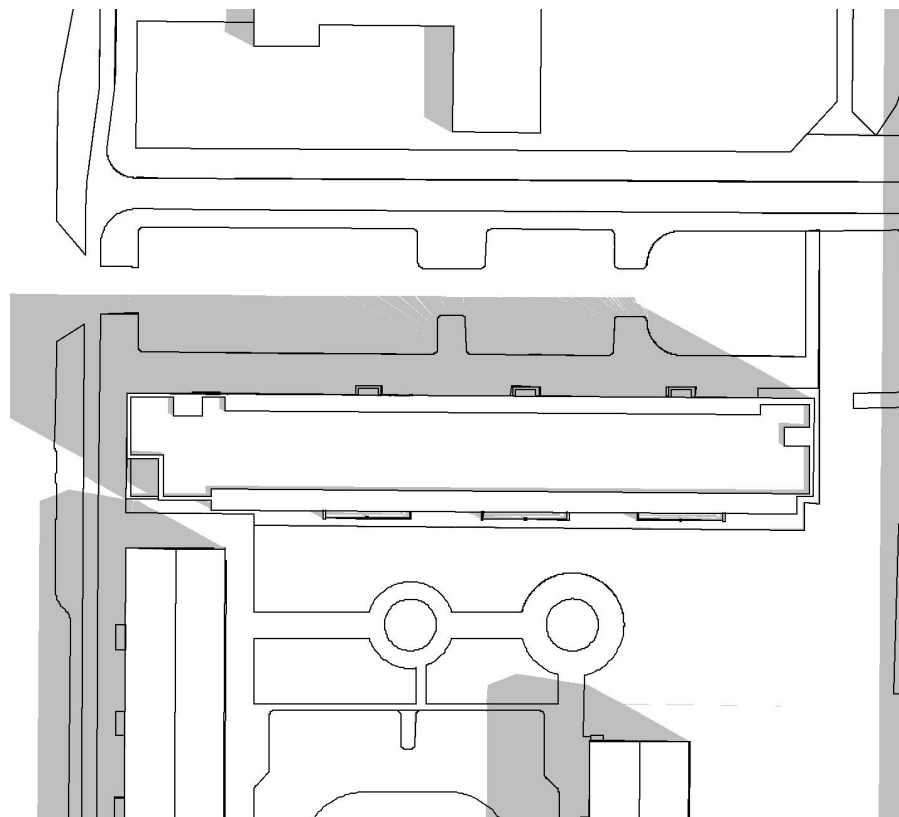


12:00

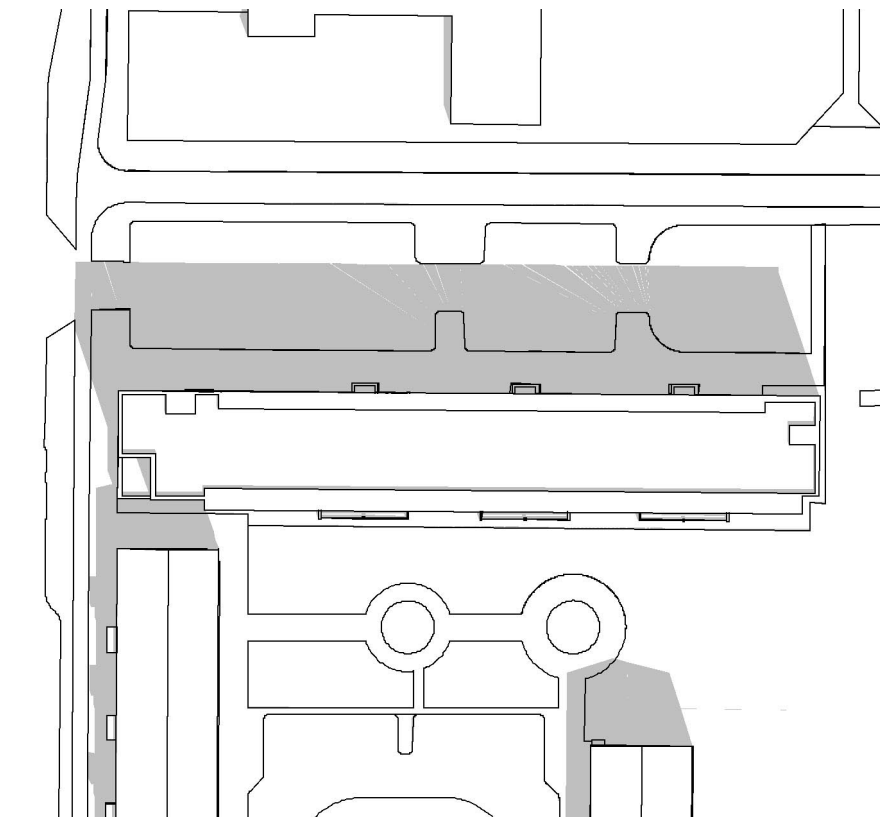


14:00

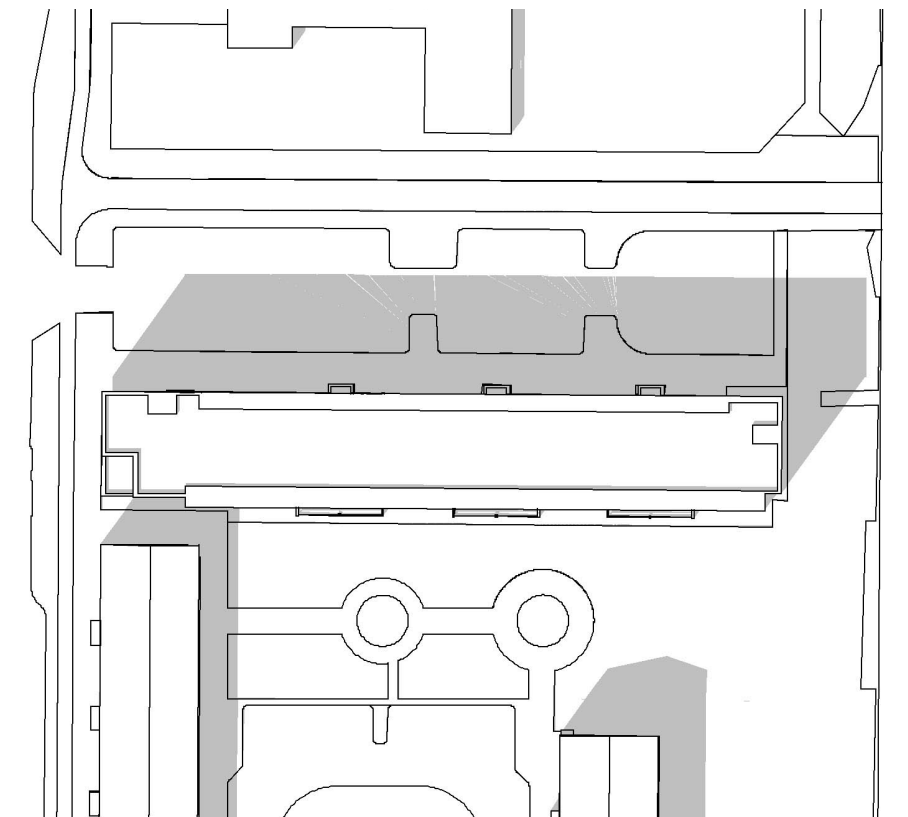
nieuwe toestand



10:00

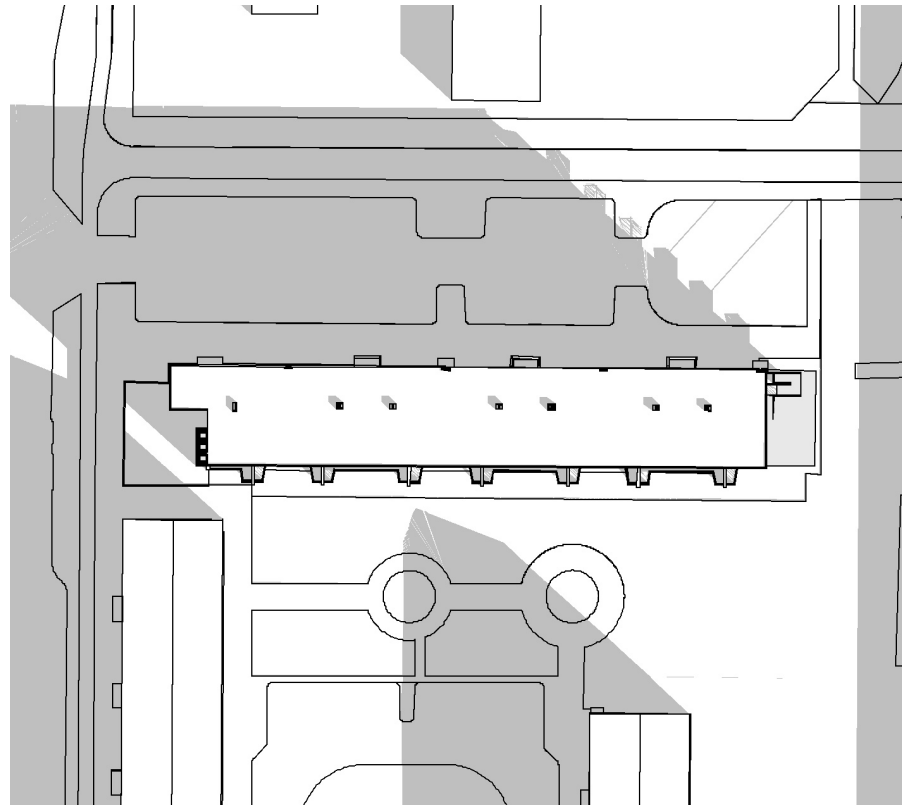


12:00

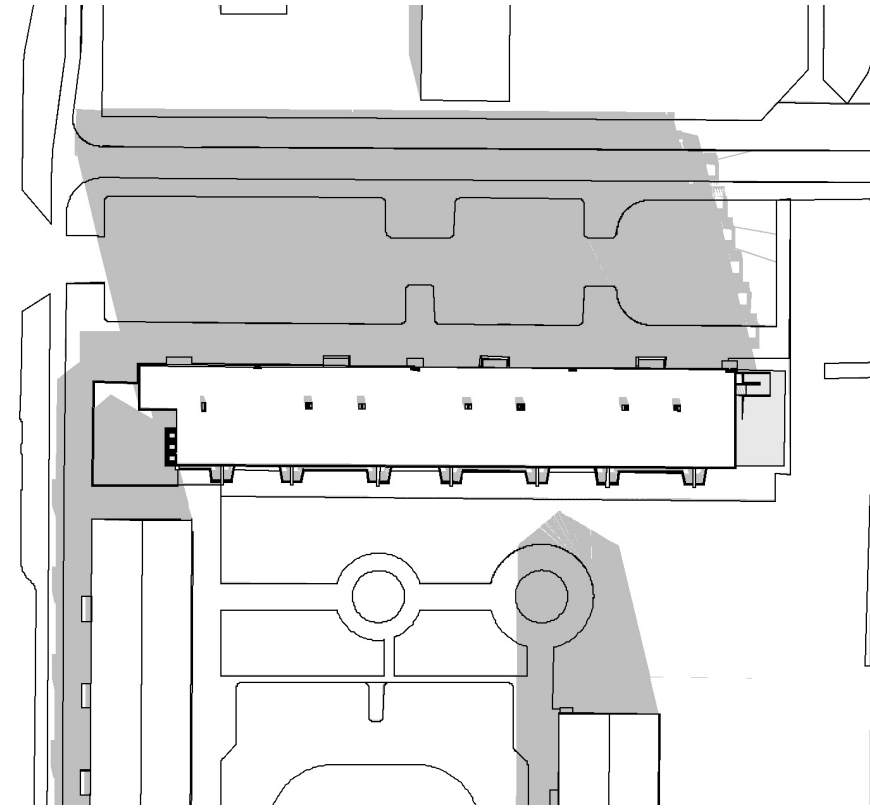


14:00

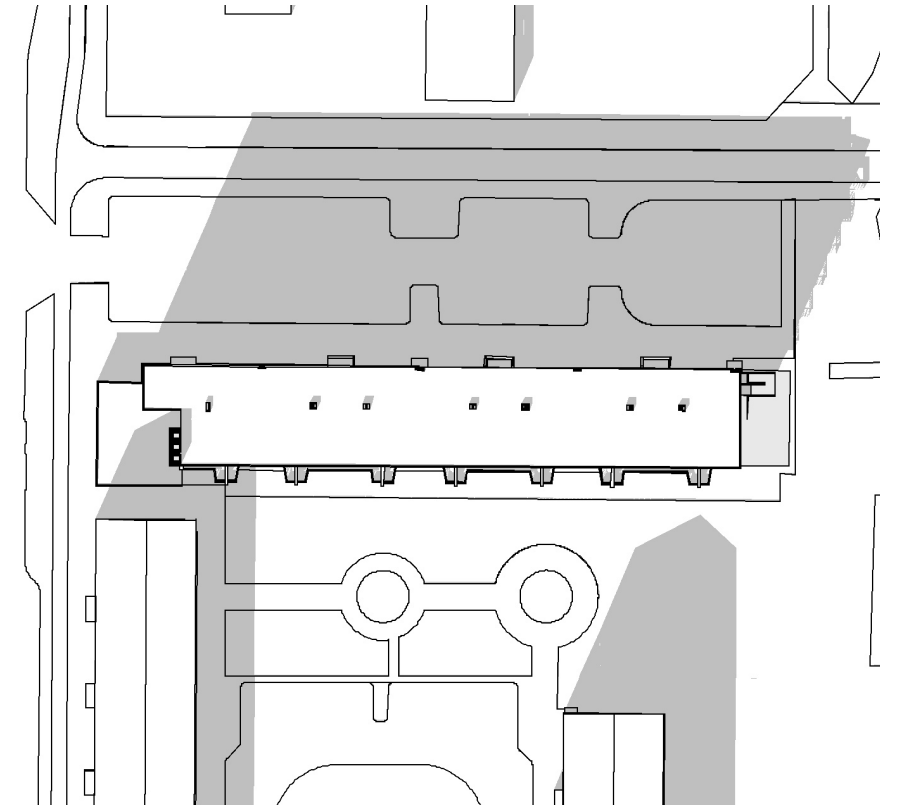
bestaande toestand



10:00

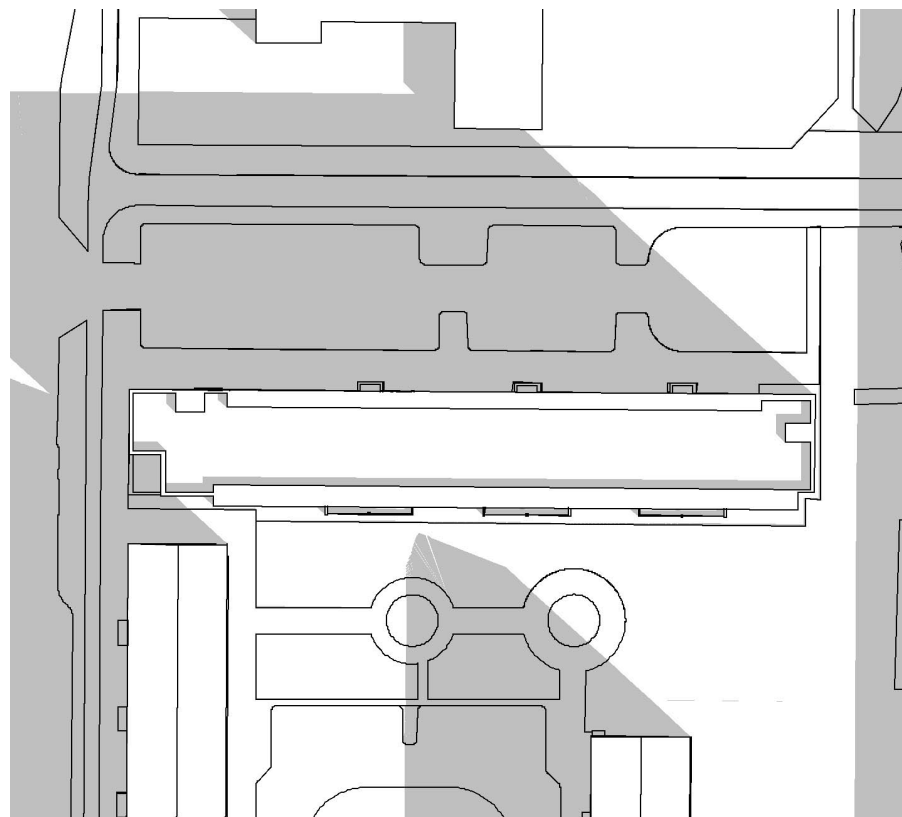


12:00

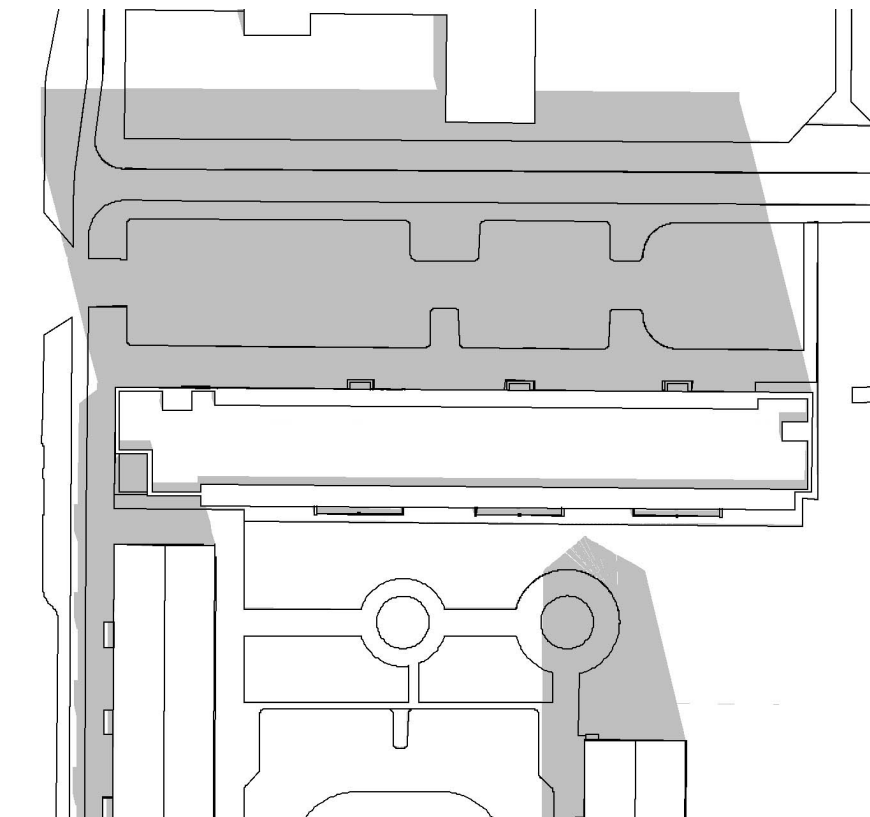


14:00

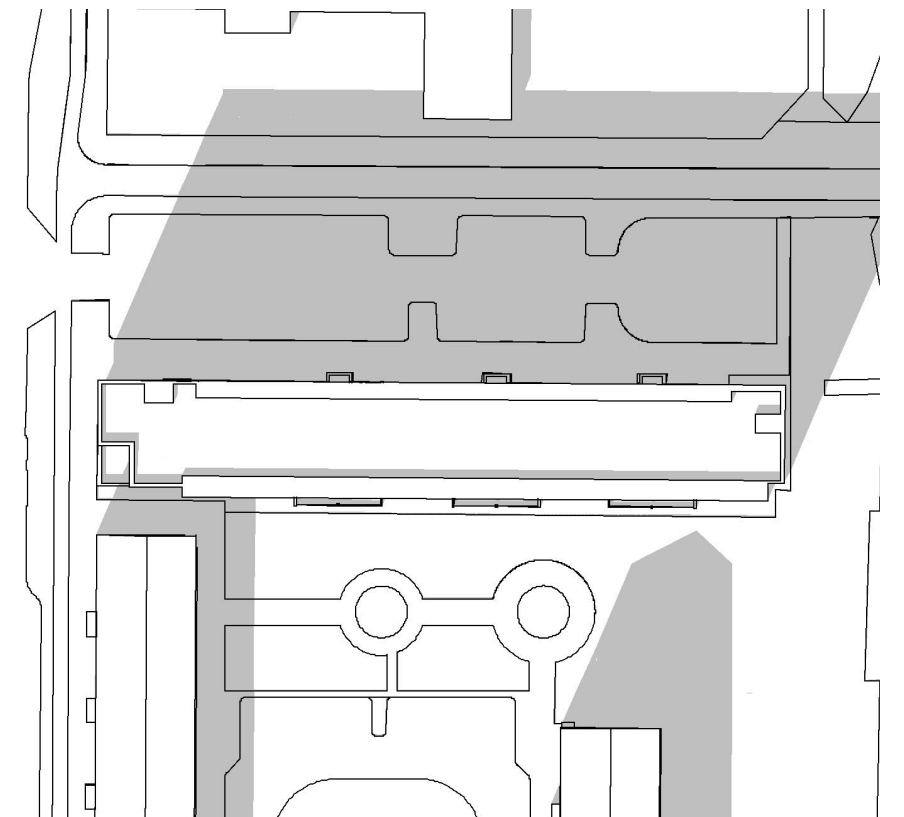
nieuwe toestand



10:00

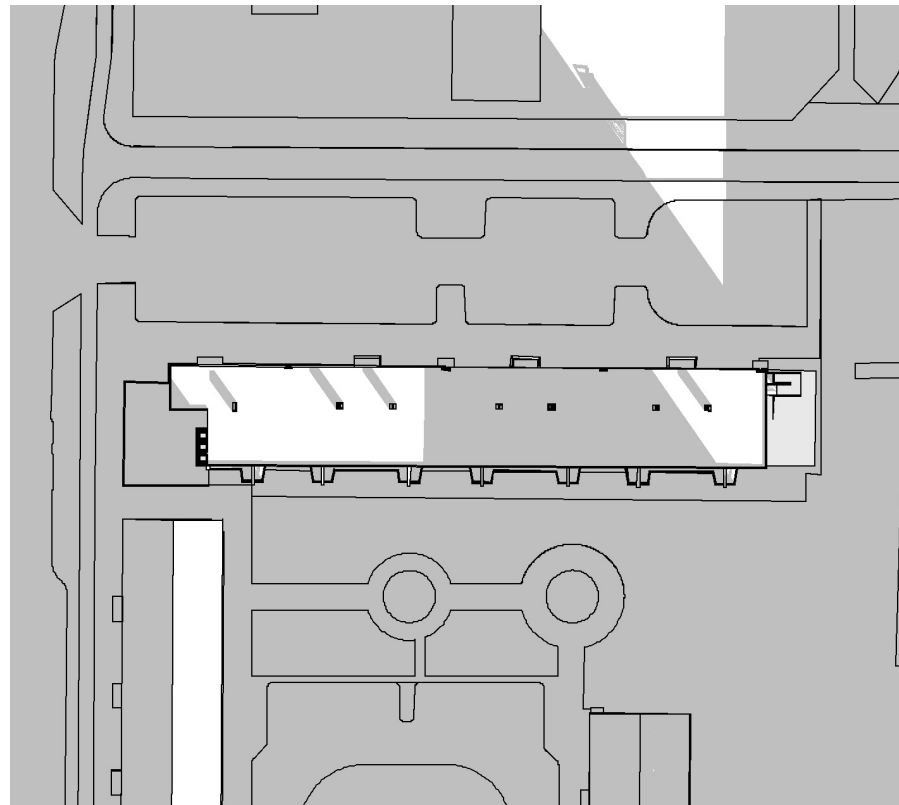


12:00

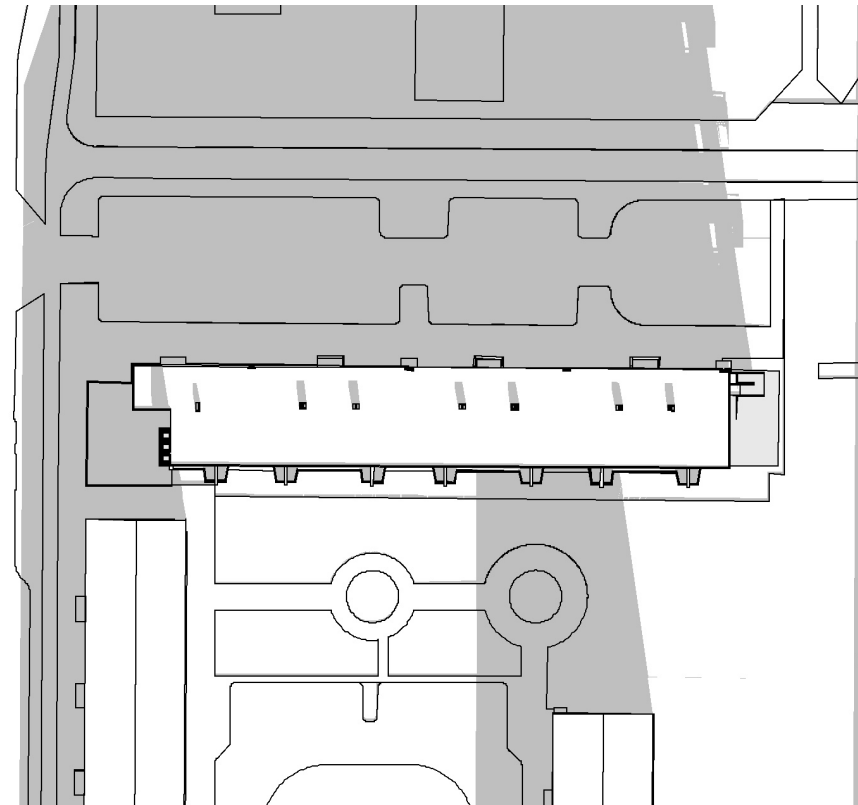


14:00

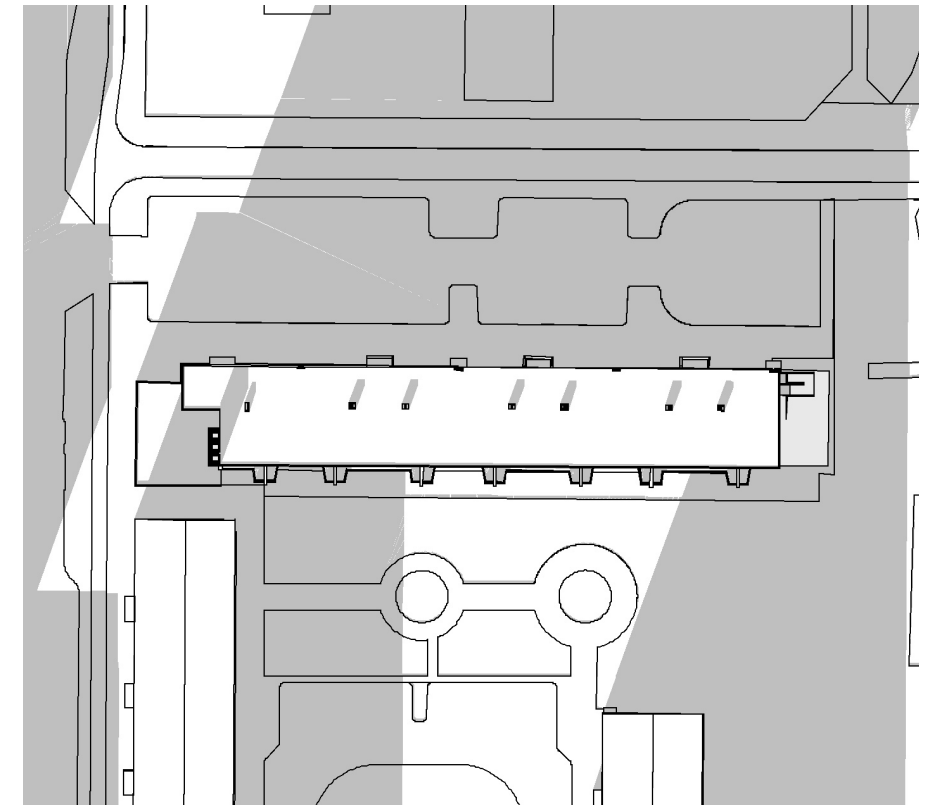
bestaande toestand



10:00

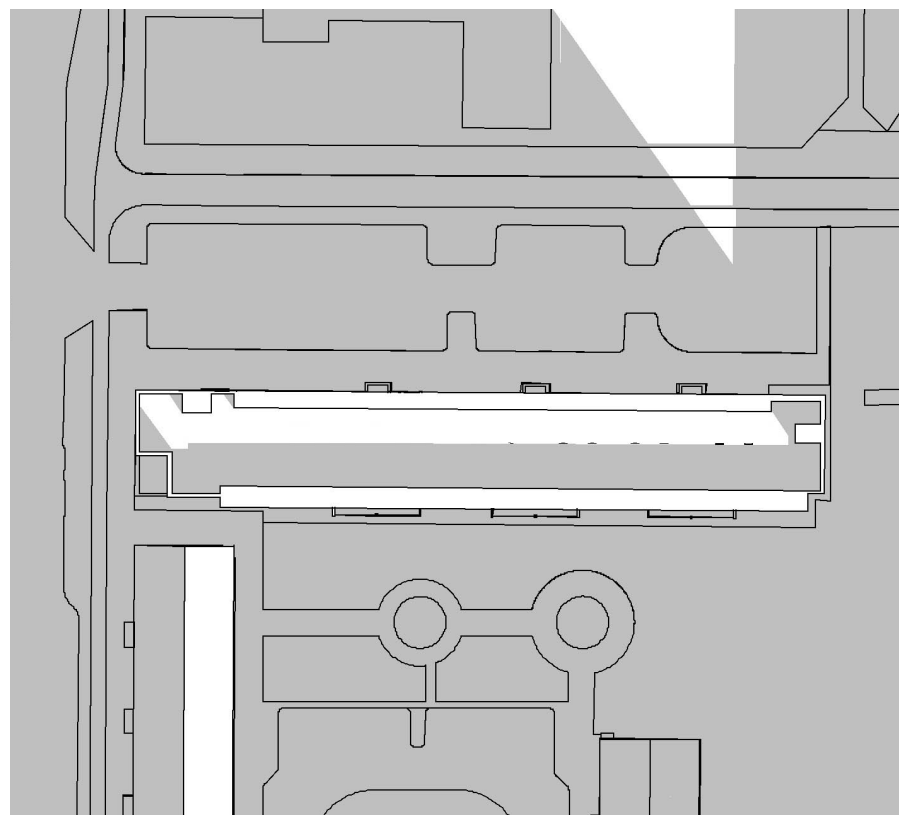


12:00

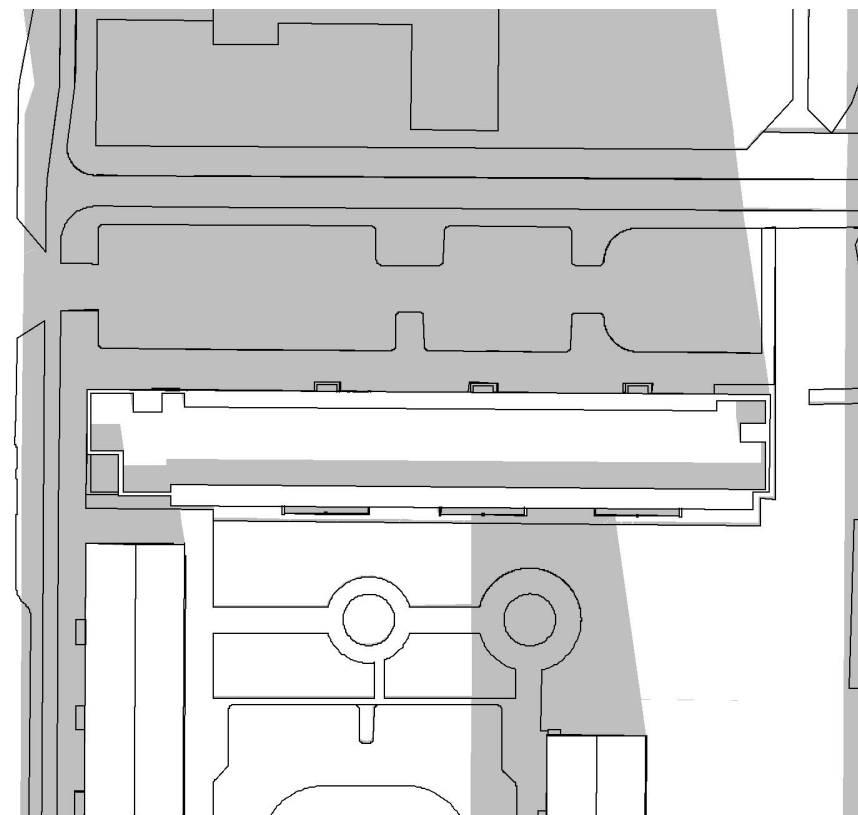


14:00

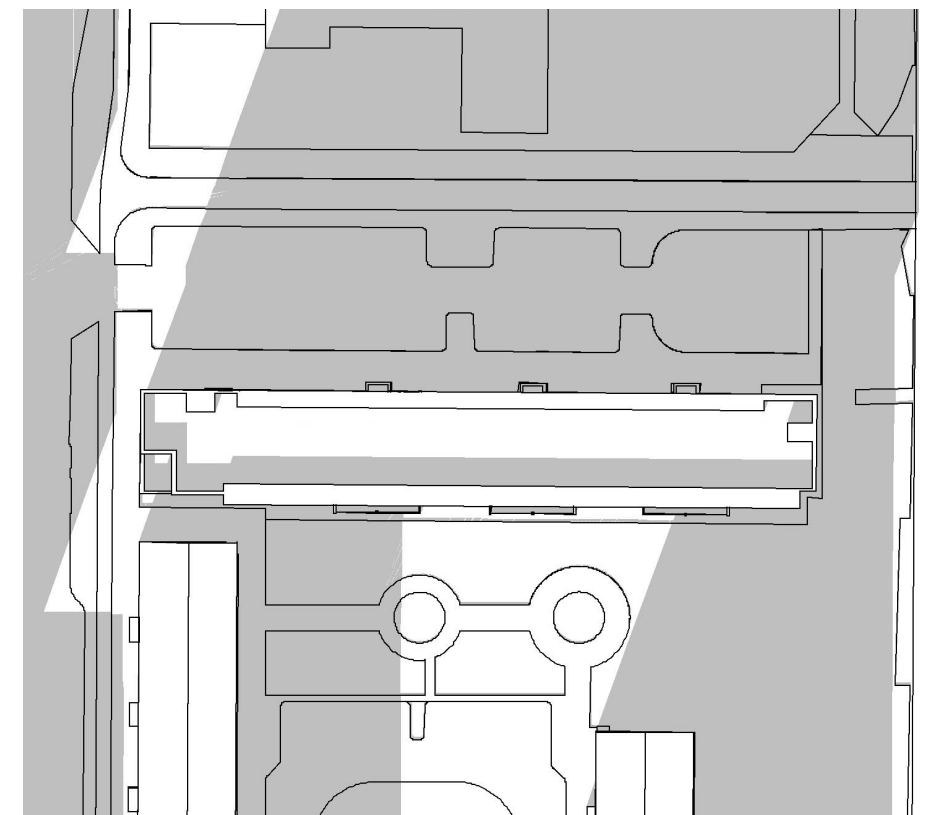
nieuwe toestand



10:00



12:00



14:00

Opdrachtgever:
Woonstichting De Key
Hoogte Kadijk 179
1018 BK Amsterdam
T: (020) 621 43 33
www.lievendekey.nl

Architect:
Office Winhov
Johan van Hasseltweg 2 E1
1022 WV Amsterdam
T: +31 (0)20 6844446
www.winhov.nl

Adviseurs:
Bongers-Jansen
Cauberg Huygen
EversPartners