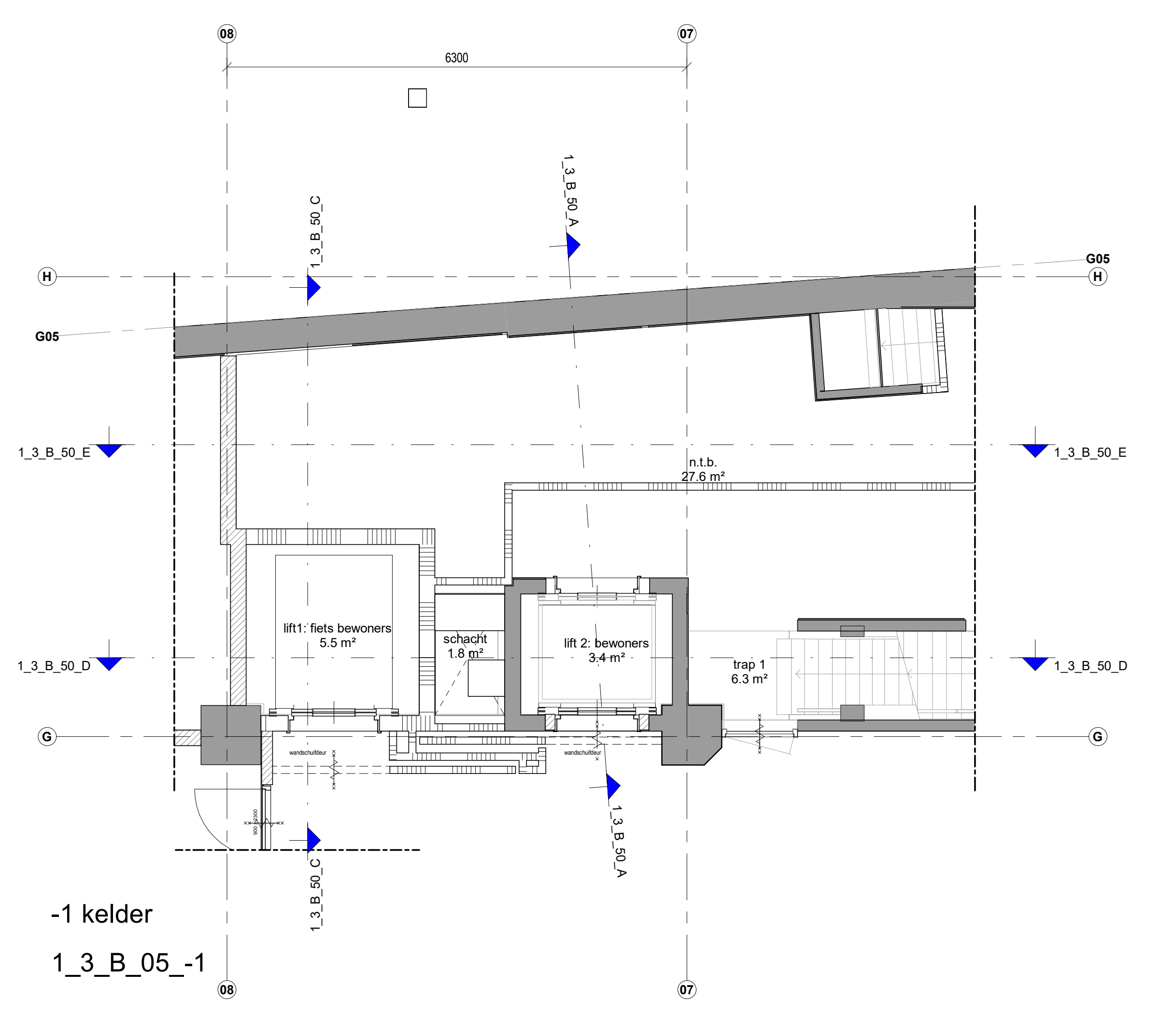
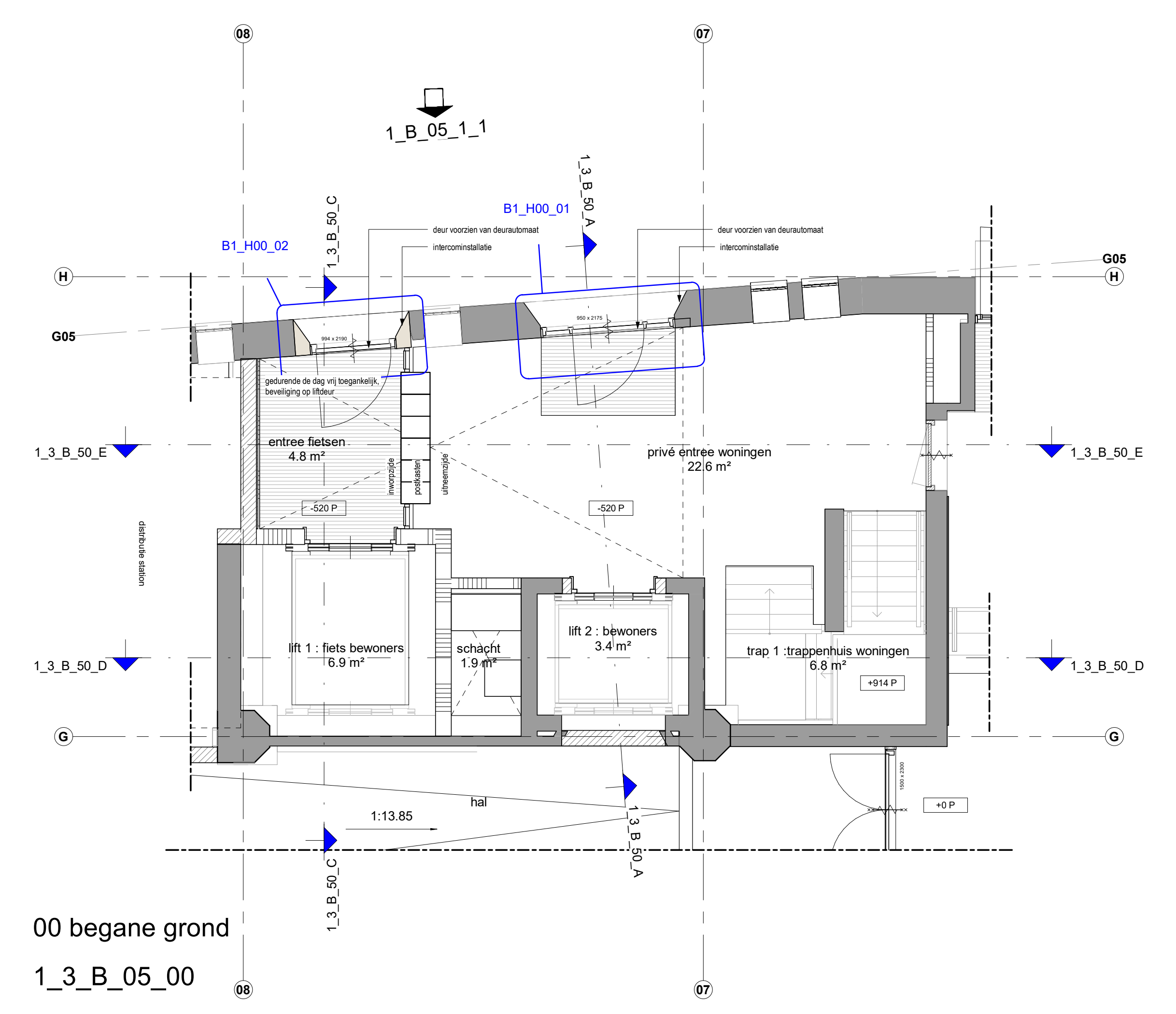


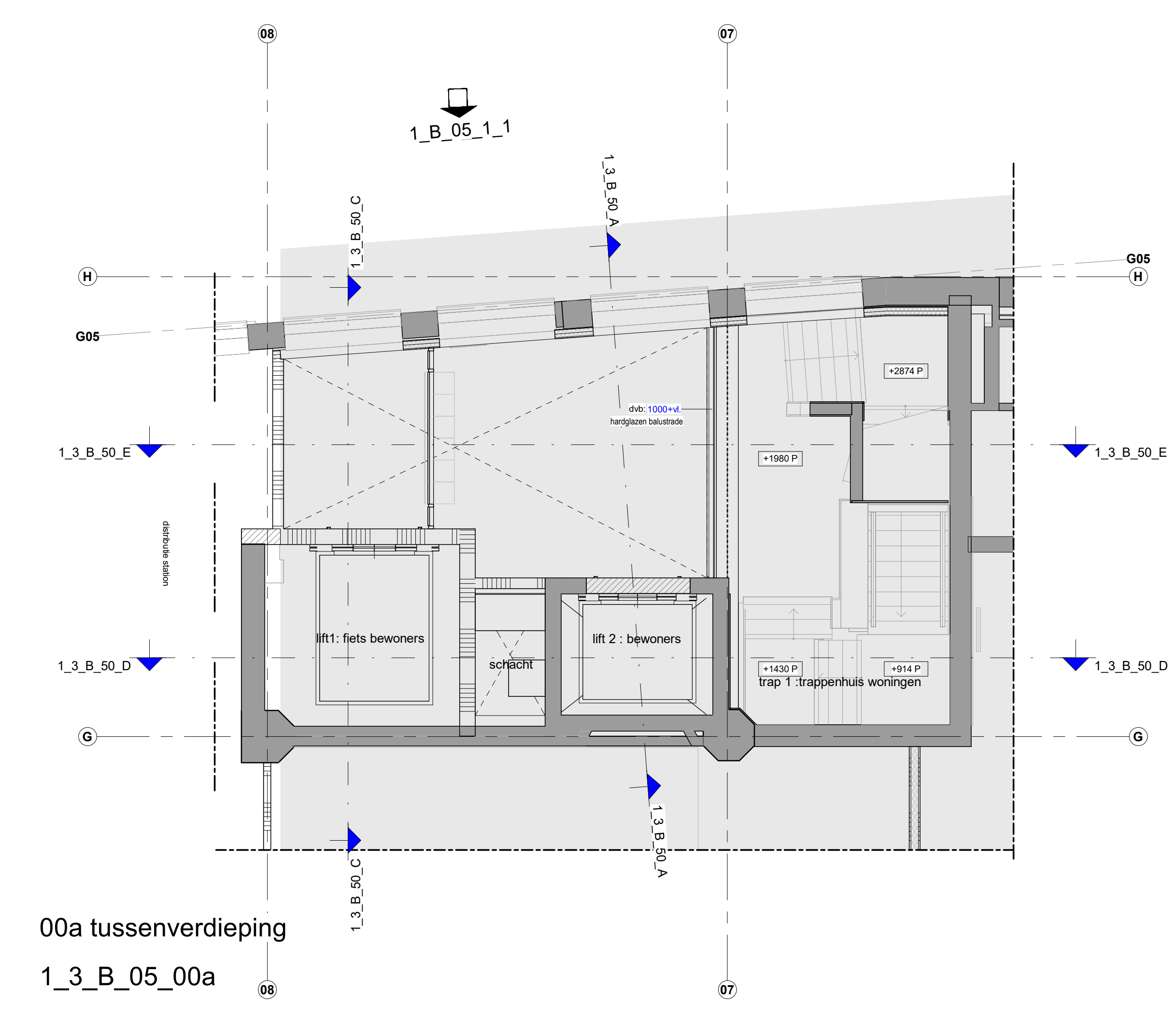
-2 kelder  
1\_3\_B\_05\_-2



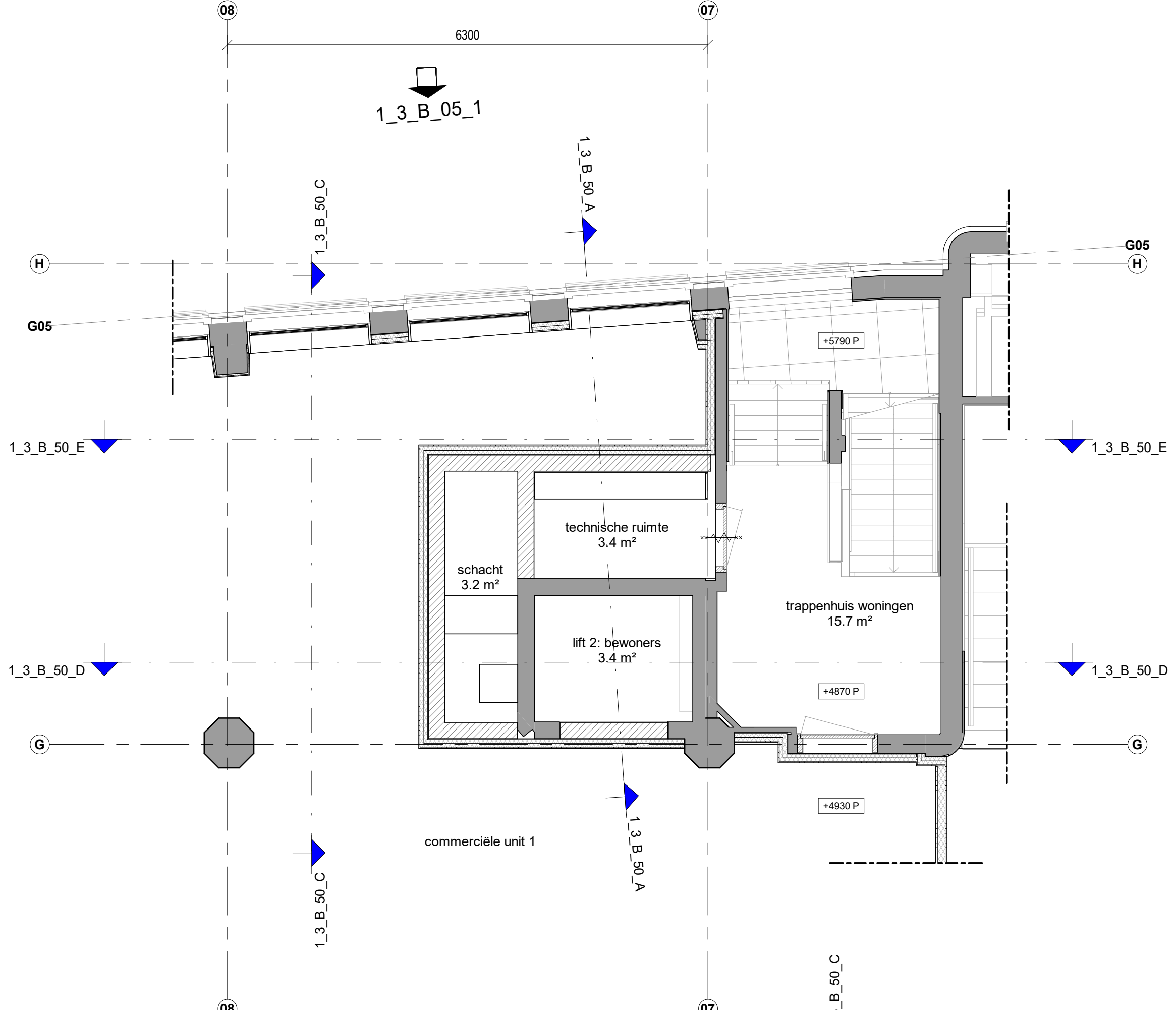
-1 kelder  
1\_3\_B\_05\_-1



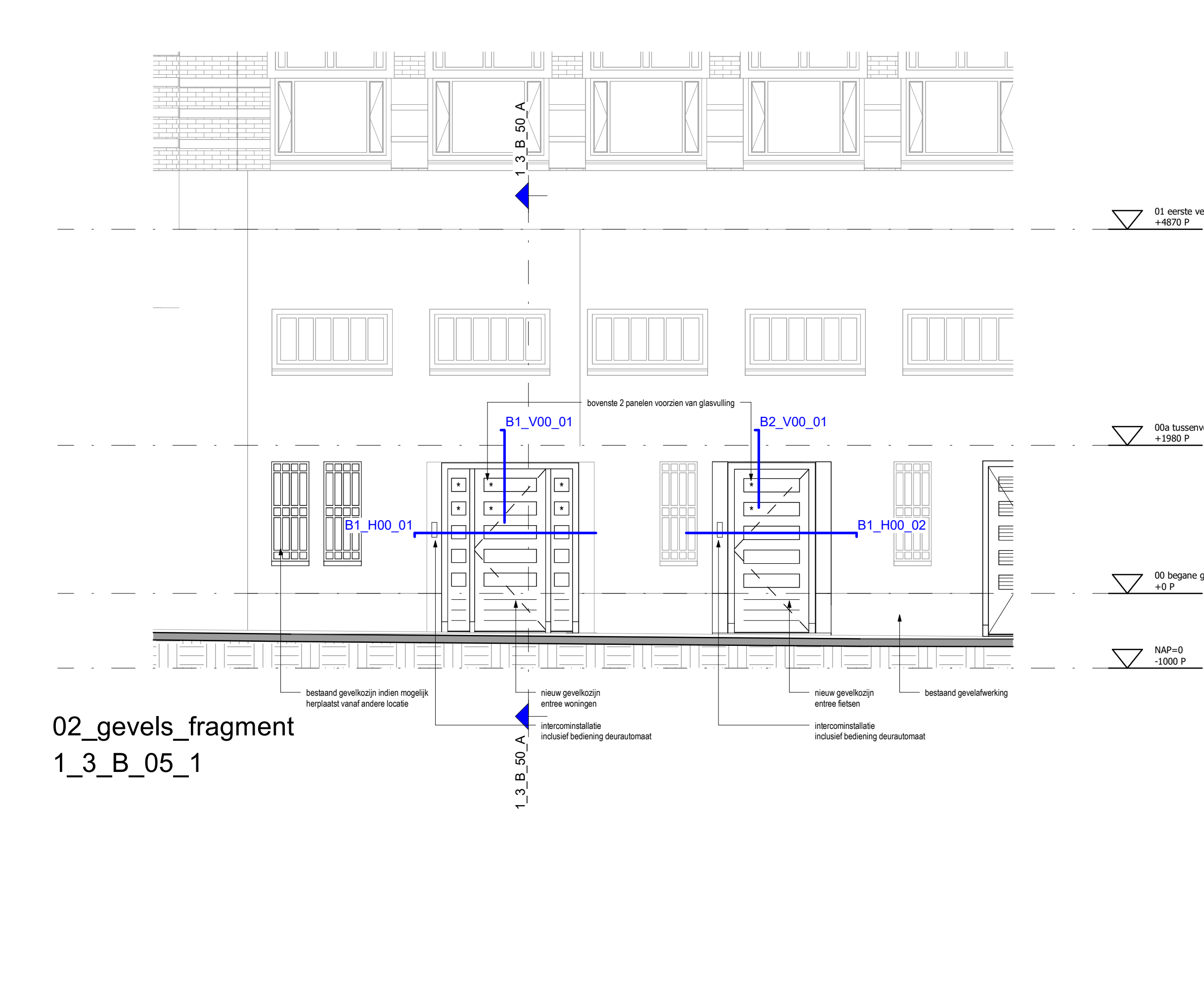
00 begane grond  
1\_3\_B\_05\_00



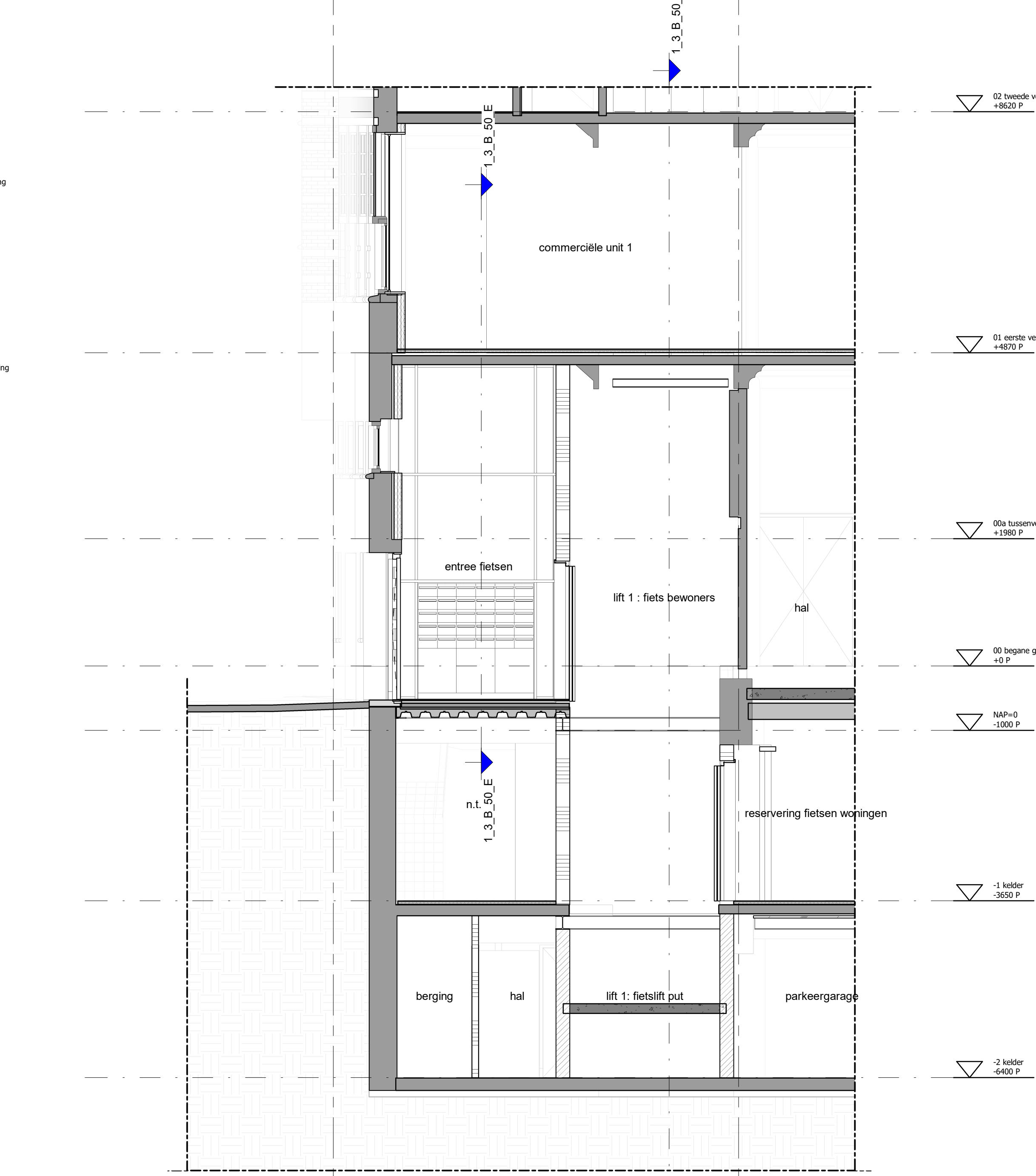
00a tussenverdieping  
1\_3\_B\_05\_00a



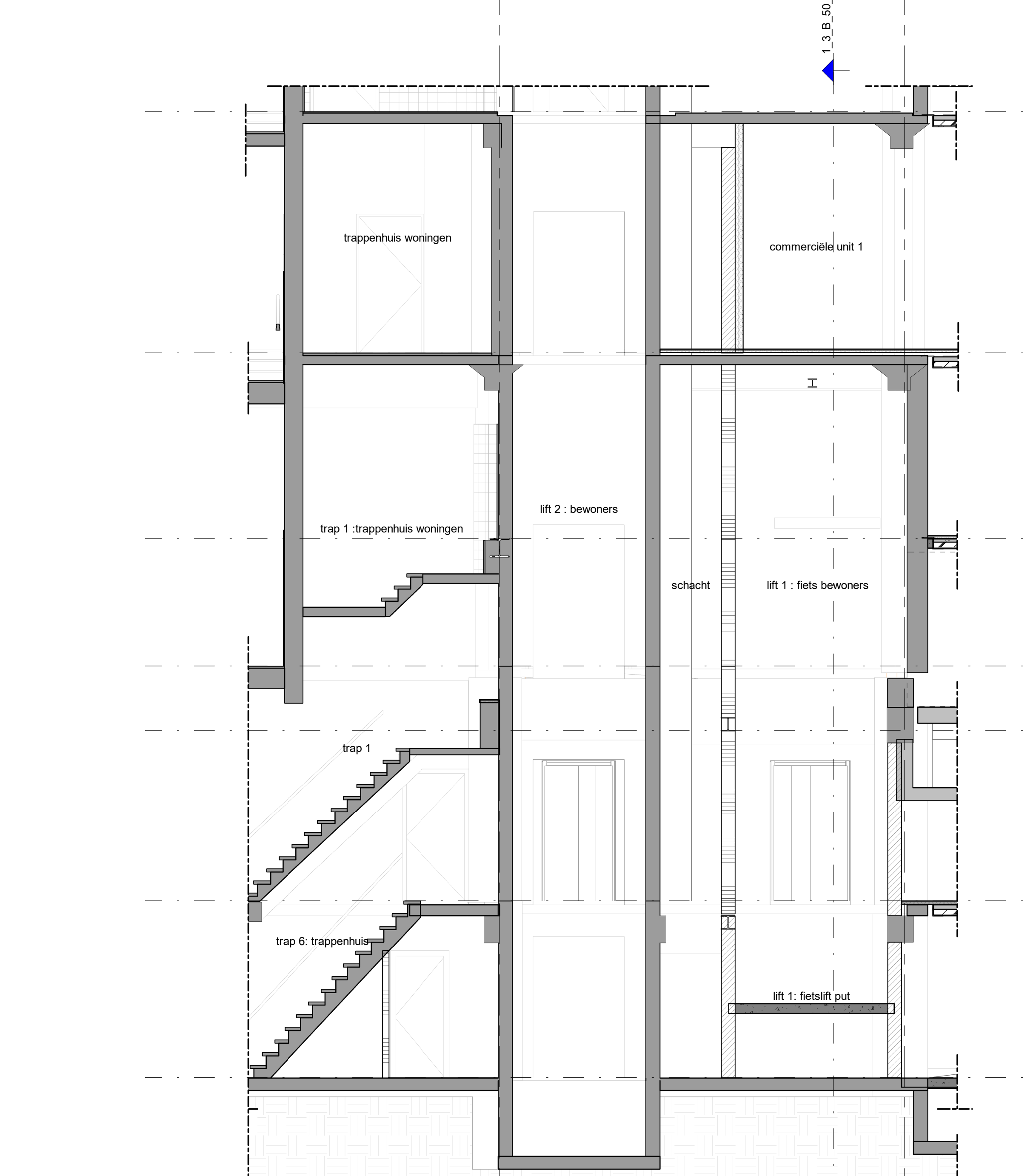
01 eerste verdieping  
1\_3\_B\_05\_01



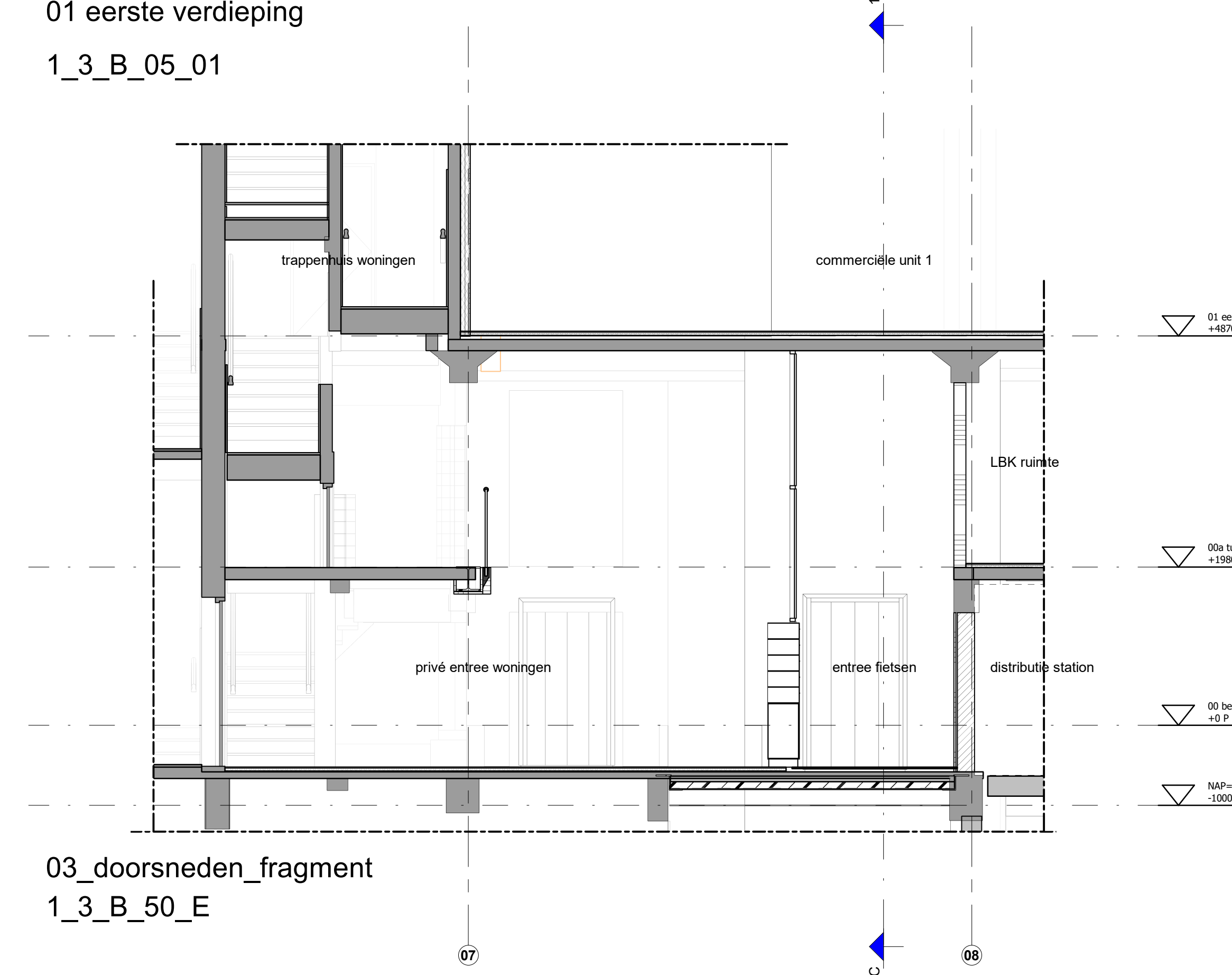
02 gevels fragment  
1\_3\_B\_05\_1



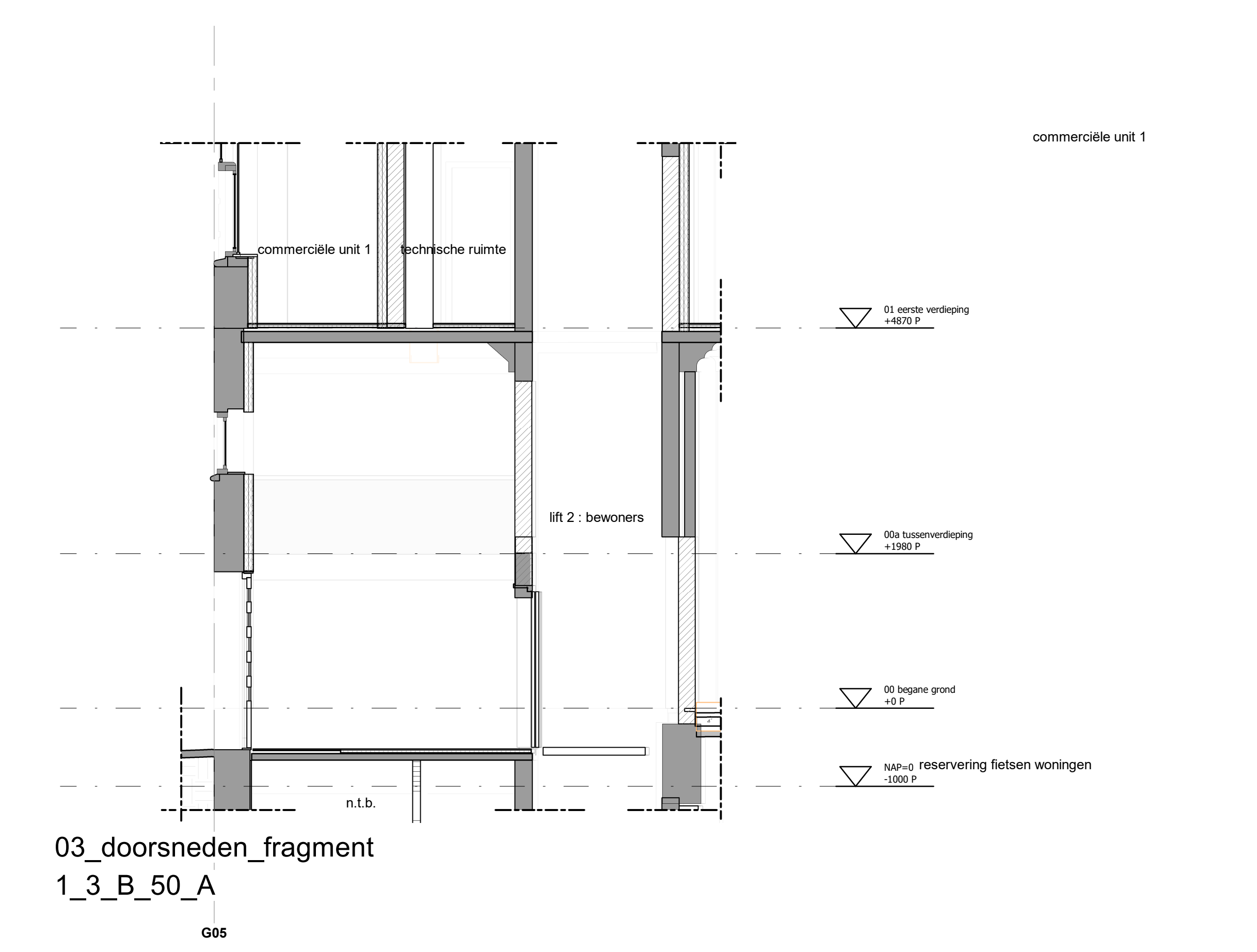
03 doorsneden fragment  
1\_3\_B\_50\_C



03 doorsneden fragment  
1\_3\_B\_50\_D



03 doorsneden fragment  
1\_3\_B\_50\_E



03 doorsneden fragment  
1\_3\_B\_50\_A

Bestand  
 Nieuw

**MVSA**  
 P.O. Box 2227  
 1200 CS Amsterdam  
 T: +31 (0)20 610 1000  
 F: +31 (0)20 610 1001  
 www.mvsa.nl

project  
 La Mappan  
 Oude Noorderdijk 70

opdrachtgever  
 A2 Twee B.V.

ontwerper  
 05 Ingenieurs

onderdeel  
 entree wonen

schaal  
 1:50

datum  
 22-08-2023

project  
 22357

vormaat  
 A2

tekeningnummer  
 B-N1-B-05-01