

**Technosoft invoer/uitvoer**

**Technosoft Raamwerken release 6.74a**

**16 mei 2022**

Project.....: 21490 - Brink16  
 Onderdeel....: Kapconstructie/ vlieringvloer  
 Constructeur.:   
 Dimensies....: kN;m;rad (tenzij anders aangegeven)  
 Datum.....: 04/04/2022  
 Bestand.....: G:\Proj-21\21\_400-499\21490 Restauratie Brink 16  
                   Deventer\15. Definitieve berekeningen  
                   JVZ\Technosoft\Wijziging 12-05-22\houten sporen.rww

Belastingbreedte.: 1.185  
 Rekenmodel.....: 2e-orde-elastisch.  
 Theorieën voor de bepaling van de krachtsverdeling:  
 1) Losse belastinggevallen:  
     Lineaire-elasticiteitstheorie  
 2) Uiterste grenstoestand:  
     Geometrisch niet lineair alle staven.  
     Fysisch lineair alle staven.  
 3) Gebruiksgrenstoestand:  
     Lineaire-elasticiteitstheorie

Maximum aantal iteraties.....: 50  
 Max.deellengte kolommen/wanden: 0.500 Max.deellengte balken/vloeren: 0.500  
 Max. X-verplaatsing in UGT....: 0.500 Max. Z-verplaatsing in UGT....: 0.250

Gunstige werking van de permanente belasting wordt automatisch verwerkt.

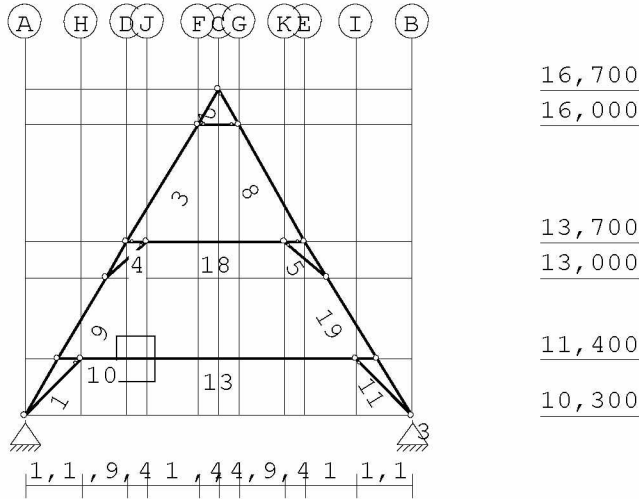
Belastingfactoren zijn bepaald conform NEN8700:2011  
 Tabel A1.2(B) en (C): Factoren bij verbouw.  
 Factoren ten behoeve van Bouwbesluit 2003 of daarvoor.

**Toegepaste normen volgens Eurocode met Nederlandse NB**

Belastingen	NEN-EN 1990:2002	C2:2010,A1:2019	NB:2019(nl)
	NEN-EN 1991-1-1:2002	C1/C11:2019	NB:2019(nl)
	NEN 8700:2011		
	NEN-EN 1991-1-3:2003	C1:2009	NB:2011(nl)
	NEN-EN 1991-1-4:2005	C2:2011	NB:2011(nl)
Hout	NEN-EN 1995-1-1:2005	A1:2011,C1:2006	NB:2013(nl)

Project.....: 21490 - Brink16  
 Onderdeel....: Kapconstructie/ vlieringvloer

**GEOMETRIE**



**STRAMIENLIJNEN**

Nr.	Naam	X	Z-min	Z-max
1	A	0.000	10.300	16.700
2	B	7.600	10.300	16.700
3	C	3.800	10.300	16.700
4	D	2.000	10.300	16.700
5	E	5.500	10.300	16.700
6	F	3.400	10.300	16.700
7	G	4.200	10.300	16.700
8	H	1.100	10.300	16.700
9	I	6.500	10.300	16.700
10	J	2.400	10.300	16.700
11	K	5.100	10.300	16.700

**NIVEAUS**

Nr.	Z	X-min	X-max
1	10.300	0.000	7.600
2	11.400	0.000	7.600
3	13.000	0.000	7.600
4	13.700	0.000	7.600
5	16.000	0.000	7.600
6	16.700	0.000	7.600

Project.....: 21490 - Brink16  
Onderdeel....: Kapconstructie/ vlieringvloer

### MATERIALEN

Mt	Kwaliteit	E-modulus [N/mm <sup>2</sup> ]	S.G.	S.G.verhoogd	Pois.	Uitz. coëff
1	C18	9000	3.2	3.8	1.00	5.0000e-06

Bij de bepaling v.h. e.g. van houten staven is de S.G.verhoogd toegepast.

### PROFIELEN [mm]

Prof.	Omschrijving	Materiaal	Oppervlak	Traagheid	Vormf.
1	B*H 80*140	1:C18	1.1200e+04	1.8293e+07	0.00
2	B*H 170*170	1:C18	2.8900e+04	6.9601e+07	0.00
3	B*H 170*200	1:C18	3.4000e+04	1.1333e+08	0.00

### PROFIELEN vervolg [mm]

Prof.	Staaftype	Breedte	Hoogte	e	Type	b1	h1	b2	h2
1	0:Normaal	80	140	70.0	0:RH				
2	0:Normaal	170	170	85.0	0:RH				
3	0:Normaal	170	200	100.0	0:RH				

### PROFIELVORMEN [mm]

1 B\*H 80\*140



2 B\*H 170\*170



3 B\*H 170\*200



### KNOPEN

Knoop	X	Z	Knoop	X	Z
1	0.000	10.300	6	3.400	16.000
2	3.800	16.700	7	4.200	16.000
3	7.600	10.300	8	0.647	11.400
4	2.000	13.700	9	6.921	11.400
5	5.500	13.700	10	1.100	11.400
11	6.500	11.400			
12	1.588	13.000			
13	2.400	13.700			
14	5.932	13.000			
15	5.100	13.700			

Project.....: 21490 - Brink16  
 Onderdeel....: Kapconstructie/ vlieringvloer

**STAVEN**

St.	ki	kj	Profiel	Aansl.i	Aansl.j	Lengte
Opm.						
1	1	8	2:B*H 170*170	NDM	NDM	1.276
2	2	7	1:B*H 80*140	ND-	NDM	0.806
3	4	6	1:B*H 80*140	NDM	NDM	2.693
4	4	13	2:B*H 170*170	ND-	NDM	0.400
5	5	14	2:B*H 170*170	NDM	NDM	0.823
6	6	2	1:B*H 80*140	NDM	NDM	0.806
7	6	7	1:B*H 80*140	ND-	ND-	0.800
8	7	5	1:B*H 80*140	NDM	NDM	2.642
9	8	12	2:B*H 170*170	NDM	NDM	1.856
10	8	10	3:B*H 170*200	NDM	NDM	0.453
11	9	3	2:B*H 170*170	NDM	NDM	1.293
12	1	10	2:B*H 170*170	NDM	ND-	1.556
13	10	11	3:B*H 170*200	NDM	NDM	5.400
14	3	11	2:B*H 170*170	NDM	ND-	1.556
15	11	9	3:B*H 170*200	NDM	NDM	0.421
16	12	4	2:B*H 170*170	NDM	NDM	0.812
17	12	13	2:B*H 170*170	NDM	ND-	1.072
18	13	15	2:B*H 170*170	NDM	NDM	2.700
19	14	9	2:B*H 170*170	NDM	NDM	1.881
20	14	15	2:B*H 170*170	NDM	ND-	1.088
21	15	5	2:B*H 170*170	NDM	ND-	0.400

**VASTE STEUNPUNTEN**

Nr. knoop	Kode	XZR 1=vast 0=vrij	Hoek
1	1	110	0.00
2	3	110	0.00

**BELASTINGGENERATIE ALGEMEEN.**

Betrouwbaarheidsklasse.....:	2	Referentieperiode.....:	15
Gebouwdiepte.....:	16.00	Gebouwhoogte.....:	16.70
Niveau aansl.terrein.....:	0.00	E.g. scheid.w. [kN/m2]:	0.50

**WIND**

Terrein categorie ...[4.3.2]...:	Onbebouwd		
Windgebied .....	3	Vb,0 ..[4.2].....:	24.500
Referentie periode wind.....:	15.00	Vb(p) ..[4.2].....:	22.458
K .....	0.280	n ....[4.2].....:	0.500
Positie spant in het gebouw....:	5.000	Kr ....[4.3.2].....:	0.209
z0 .....	0.200	Zmin ..[4.3.2].....:	4.000

Project.....: 21490 - Brink16  
 Onderdeel....: Kapconstructie/ vlieringvloer

**WIND**

---

Co wind van links ..[4.3.3]...: 1.000    Co wind van rechts....: 1.000  
 Co wind loodrecht ..[4.3.3]...: 1.000  
 Cpi wind van links ..[7.2.9]...: 0.200 -0.300  
 Cpi windloodrecht ...[7.2.9]...: 0.200 -0.300  
 Cpi wind van rechts .[7.2.9]...: 0.200 -0.300  
 Cfr windwrijving ....[7.5].....: 0.040

**SNEEUW**

---

Sneeuwbelasting (sk) 50 jaar : 0.70  
 Sneeuwbelasting (sn) n jaar : 0.53

**STAFTYPEN**

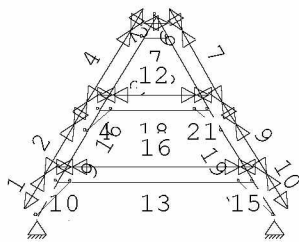
---

Type	staven
1:Vloer.	: 4-13-3,15,18,21
7:Dak.	: 1-3,5,6,8,9,11,16,19
9:Open.	: 12,14,17,20

**LASTVELDEN**

---

Veranderlijke belastingen door personen



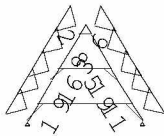
Project.....: 21490 - Brink16  
Onderdeel....: Kapconstructie/ vlieringvloer

### LASTVELDEN

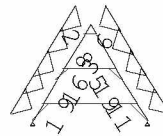
Nr	StAAF	Tabel	Klasse-Gebruiksfunctie	Verd.	$q_k$	$Q_k$	$F_t / F_{t,0}$
1	1-1	6.10	H-Dak (onder dakbeschot)	0	0.00	-2.00	0.87
2	9-9	6.10	H-Dak (onder dakbeschot)	0	0.00	-2.00	0.87
3	16-16	6.10	H-Dak (onder dakbeschot)	0	0.00	-2.00	0.87
4	3-3	6.10	H-Dak (onder dakbeschot)	0	0.00	-2.00	0.87
5	6-6	6.10	H-Dak (onder dakbeschot)	0	0.00	-2.00	0.87
6	2-2	6.10	H-Dak (onder dakbeschot)	2	0.00	-2.00	0.87
7	8-8	6.10	H-Dak (onder dakbeschot)	2	0.00	-2.00	0.87
8	5-5	6.10	H-Dak (onder dakbeschot)	2	0.00	-2.00	0.87
9	19-19	6.10	H-Dak (onder dakbeschot)	2	0.00	-2.00	0.87
10	11-11	6.10	H-Dak (onder dakbeschot)	2	0.00	-2.00	0.87
11	4-4	6.2	A-Vloeren	1	-1.75	-3.00	0.92
12	18-18	6.2	A-Vloeren	1	-1.75	-3.00	0.92
13	21-21	6.2	A-Vloeren	1	-1.75	-3.00	0.92
14	7-7	6.2	A-Vloeren	2	-1.75	-3.00	0.92
15	10-10	6.2	A-Vloeren	0	-1.75	-3.00	0.92
16	13-13	6.2	A-Vloeren	0	-1.75	-3.00	0.92
17	15-15	6.2	A-Vloeren	0	-1.75	-3.00	0.92

### LASTVELDEN

Wind staven



Sneeuw staven



### WIND DAKTYPES

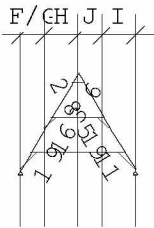
Nr.	StAAF	Type	reductie bij wind van links	reductie bij wind van rechts	Cpe volgens art:
1	1-6	Zadeldak	1.000	1.000	7.2.5
2	2-11	Zadeldak	1.000	1.000	7.2.5

Project.....: 21490 - Brink16  
 Onderdeel....: Kapconstructie/ vlieringvloer

## WIND ZONES

Wind van links

Wind van rechts



### WIND VAN LINKS ZONES

Nr.	StAAF	Positie	Lengte	Zone
1	1-6	0.000	1.600	F/G
2	1-6	1.600	2.200	H
3	2-11	0.000	1.600	J
4	2-11	1.600	2.200	I

### Wind indexen

Index	CsCd	Cpe/Cpi	qp	breedte	reductie	Qw	Zone	Hoek(en)
Qw1		0.300	0.696	1.185		-0.247	-i	
Qw2	1.00	0.700	0.696	1.185		-0.577	G	59.5
Qw3	1.00	0.697	0.696	1.185		-0.575	H	59.5
Qw4	1.00	0.691	0.696	1.185		-0.570	H	58.7
Qw5	1.00	0.702	0.696	1.185		-0.579	H	60.3
Qw6	1.00	-0.300	0.696	1.185		0.247	J	60.3 60.5
Qw7	1.00	-0.200	0.696	1.185		0.165	I	58.3 60.5
Qw8		-0.200	0.696	1.185		0.165	+i	
Qw9	1.00	-0.500	0.696	1.185		0.412	I	58.3 60.5

### SNEEUW DAKTYPEN

StAAF	artikel
1-6	5.3.3 Zadeldak
2-11	5.3.3 Zadeldak

### Sneeuw indexen

Index	art	$\mu$	$s_k$	red. posfac	breedte	$Q_s$	hoek
Qs1	5.3.3	0.012	0.53	1.00	1.185	0.008	59.5
Qs2	5.3.3	0.035	0.53	1.00	1.185	0.022	58.7
Qs3	5.3.3	0.045	0.53	1.00	1.185	0.028	58.3
Qs4	5.3.3	0.018	0.53	1.00	1.185	0.011	58.7
Qs5	5.3.3	0.023	0.53	1.00	1.185	0.014	58.3

Project.....: 21490 - Brink16  
 Onderdeel....: Kapconstructie/ vlieringvloer

### BELASTINGGEVALLEN

B.G.	Omschrijving	Type
	1 Permanente belasting EGZ=-1.00	1
g	2 Ver. bel. pers. ed. (q <sub>k</sub> )	2
g	3 Ver. bel. pers. ed. (Q <sub>k</sub> )	3
g	4 Wind van links onderdruk A	7
g	5 Wind van links overdruk A	8
g	6 Wind loodrecht onderdruk A	15
g	7 Wind loodrecht overdruk A	16
g	8 Sneeuw A	22
g	9 Sneeuw B	23
g	10 Sneeuw C	33

g = gegeneerd belastinggeval

### BELASTINGGEVALLEN vervolg

B.G.	Omschrijving	Belastingduurklasse
	1 Permanente belasting	Blijvend
	2 Ver. bel. pers. ed. (q <sub>k</sub> )	Middellang
	3 Ver. bel. pers. ed. (Q <sub>k</sub> )	Middellang
	4 Wind van links onderdruk A	Kort
	5 Wind van links overdruk A	Kort
	6 Wind loodrecht onderdruk A	Kort
	7 Wind loodrecht overdruk A	Kort
	8 Sneeuw A	Kort
	9 Sneeuw B	Kort
	10 Sneeuw C	Kort

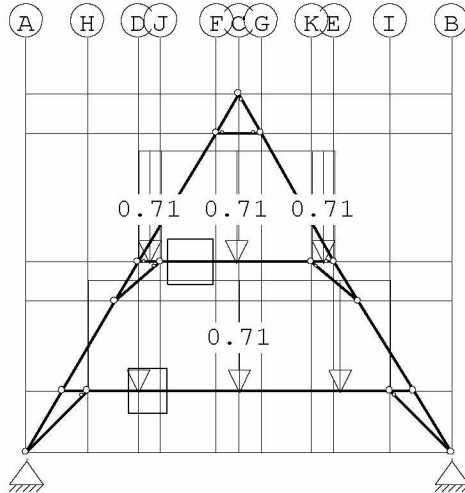


Project.....: 21490 - Brink16  
 Onderdeel....: Kapconstructie/ vlieringvloer

**BELASTINGEN**

B.G:1 Permanente belasting

Eigen gewicht van alle staven is meegenomen in berekening. Richting:↓



**STAAFBELASTINGEN**

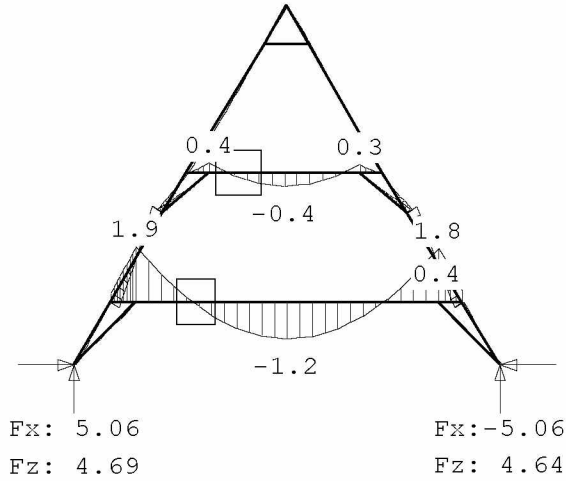
B.G:1 Permanente belasting

StAAF Type	q1/p/m	q2	A	B	$\Psi_0$	$\Psi_1$	$\Psi_2$
4 1:QZLokaal	-0.71	-0.71	0.000	0.000			
18 1:QZLokaal	-0.71	-0.71	0.000	0.000			
21 1:QZLokaal	-0.71	-0.71	0.000	0.000			
13 1:QZLokaal	-0.71	-0.71	0.000	0.000			

Project.....: 21490 - Brink16  
 Onderdeel....: Kapconstructie/ vlieringvloer

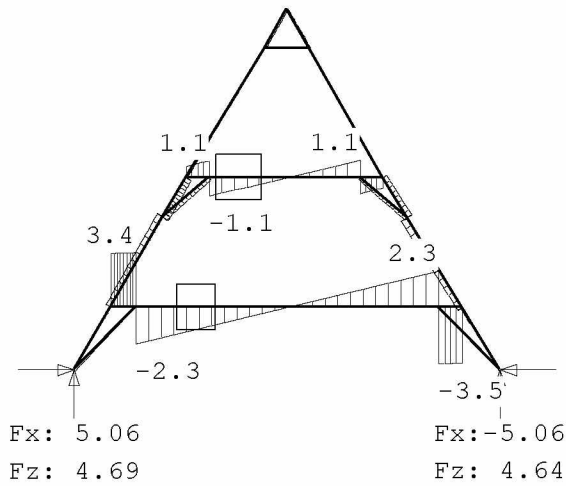
**MOMENTEN**      1e orde      B.G:1 Permanente belasting

---



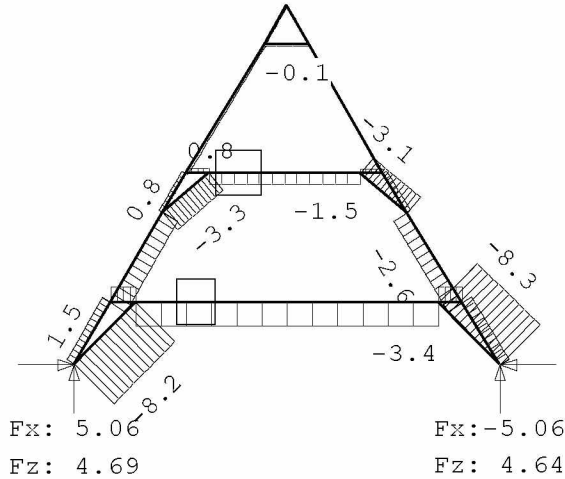
**DWARSKRACHTEN**      1e orde      B.G:1 Permanente belasting

---

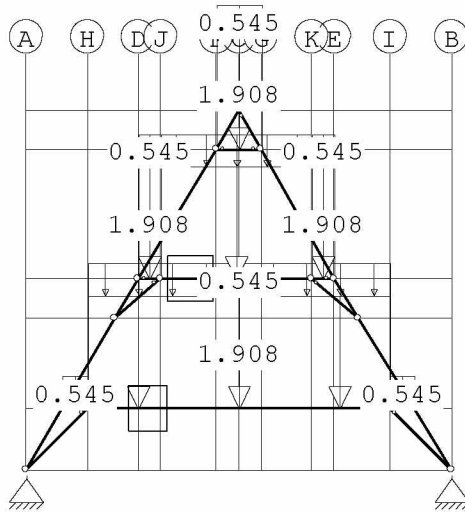


Project.....: 21490 - Brink16  
 Onderdeel....: Kapconstructie/ vlieringvloer

**NORMAALKRACHTEN** 1e orde B.G:1 Permanente belasting



**BELASTINGEN** B.G:2 Ver. bel. pers. ed. (q\_k)



**STAAFBELASTINGEN** B.G:2 Ver. bel. pers. ed. (q\_k)

StAAF	Type	q1/p/m	q2	A	B	$\Psi_0$	$\Psi_1$	$\Psi_2$
4	3:QZgeProj.	-1.91	-1.91	0.000	0.000	0.40	0.50	0.30
4	3:QZgeProj.	-0.55	-0.55	0.000	0.000	0.40	0.50	0.30
18	3:QZgeProj.	-1.91	-1.91	0.000	0.000	0.40	0.50	0.30
18	3:QZgeProj.	-0.55	-0.55	0.000	0.000	0.40	0.50	0.30
21	3:QZgeProj.	-1.91	-1.91	0.000	0.000	0.40	0.50	0.30
21	3:QZgeProj.	-0.55	-0.55	0.000	0.000	0.40	0.50	0.30
7	3:QZgeProj.	-1.91	-1.91	0.000	0.000	0.40	0.50	0.30
7	3:QZgeProj.	-0.55	-0.55	0.000	0.000	0.40	0.50	0.30

Project.....: 21490 - Brink16  
 Onderdeel....: Kapconstructie/ vlieringvloer

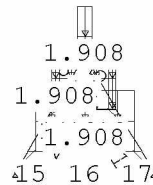
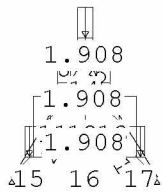
**STAAFBELASTINGEN**

B.G:2 Ver. bel. pers. ed. (q\_k)

StAAF Type	q1/p/m	q2	A	B	$\Psi_0$	$\Psi_1$	$\Psi_2$
10 3:QZgeProj.	-0.55	-0.55	0.000	0.000	0.40	0.50	0.30
13 3:QZgeProj.	-1.91	-1.91	0.000	0.000	0.40	0.50	0.30
13 3:QZgeProj.	-0.55	-0.55	0.000	0.000	0.40	0.50	0.30
15 3:QZgeProj.	-0.55	-0.55	0.000	0.000	0.40	0.50	0.30

**SITUATIES BELAST/ONBELAST**

B.G:2 Ver. bel. pers. ed. (q\_k)



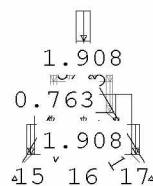
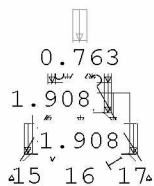
**SITUATIES BELAST/ONBELAST**

Belastingtype: q\_k

Nr Lastvelden belast	Lastvelden onbelast
1 1-10,12,14-17	11,13
2 1-14,16	15,17

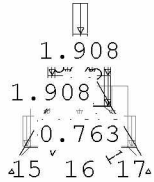
**SITUATIES EXTREME VERDIEPINGSVLOEREN**

B.G:2Ver.bel.pers.ed. (q\_k)



Project.....: 21490 - Brink16  
 Onderdeel....: Kapconstructie/ vlieringvloer

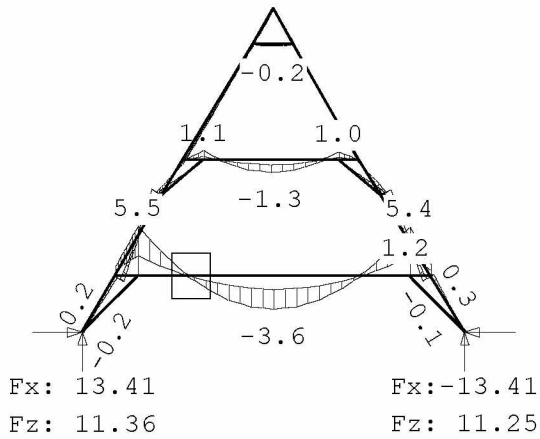
**SITUATIES EXTREME VERDIEPINGSVLOEREN** B.G:2 Ver.bel.pers.ed. (q\_k)



**SITUATIES EXTREME VERDIEPINGSVLOEREN** Belastingtype: q\_k

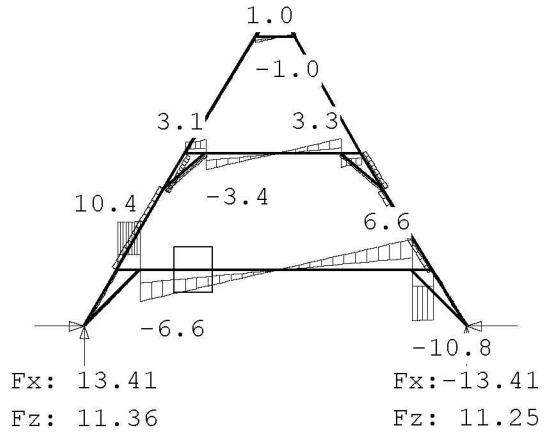
Nr Verdieping extreem belast	Verdieping *Psi0 belast
1 0,1	2
2 0,2	1
3 1,2	0

**MOMENTEN** 1e orde B.G:2 Ver. bel. pers. ed. (q\_k)

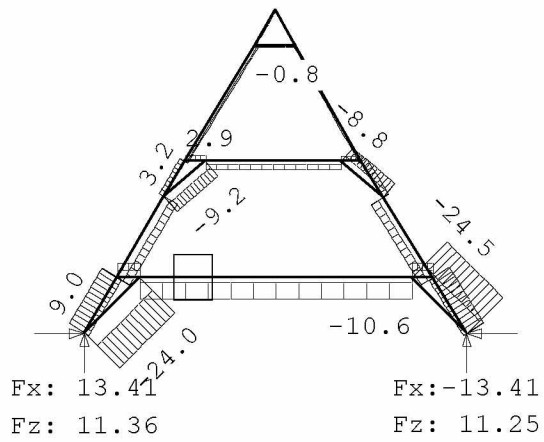


Project.....: 21490 - Brink16  
 Onderdeel....: Kapconstructie/ vlieringvloer

**DWARSKRACHTEN** 1e orde B.G:2 Ver. bel. pers. ed. (q\_k)



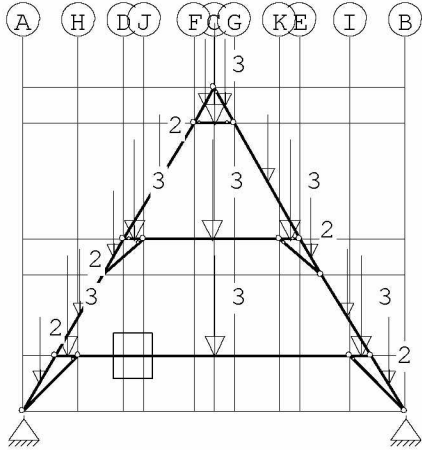
**NORMAALKRACHTEN** 1e orde B.G:2 Ver. bel. pers. ed. (q\_k)



Project.....: 21490 - Brink16  
 Onderdeel....: Kapconstructie/ vlieringvloer

**BELASTINGEN**

B.G:3 Ver. bel. pers. ed. (Q\_k)



**STAAFBELASTINGEN**

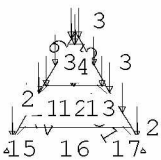
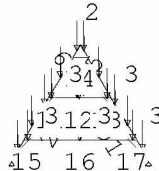
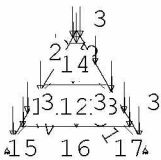
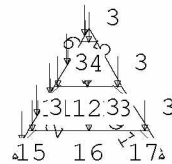
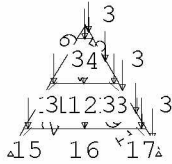
B.G:3 Ver. bel. pers. ed. (Q\_k)

Staaftype	Type	q1/p/m	q2	A	B	$\Psi_0$	$\Psi_1$	$\Psi_2$
1	10:PZGeproj.	-2.00	0.638	0.00	0.00	0.00	0.00	0.00
9	10:PZGeproj.	-2.00	0.928	0.00	0.00	0.00	0.00	0.00
16	10:PZGeproj.	-2.00	0.406	0.00	0.00	0.00	0.00	0.00
3	10:PZGeproj.	-2.00	1.346	0.00	0.00	0.00	0.00	0.00
6	10:PZGeproj.	-2.00	0.403	0.00	0.00	0.00	0.00	0.00
2	10:PZGeproj.	-2.00	0.403	0.00	0.00	0.00	0.00	0.00
8	10:PZGeproj.	-2.00	1.321	0.00	0.00	0.00	0.00	0.00
5	10:PZGeproj.	-2.00	0.411	0.00	0.00	0.00	0.00	0.00
19	10:PZGeproj.	-2.00	0.940	0.00	0.00	0.00	0.00	0.00
11	10:PZGeproj.	-2.00	0.646	0.00	0.00	0.00	0.00	0.00
4	10:PZGeproj.	-3.00	0.200	0.40	0.50	0.30		
18	10:PZGeproj.	-3.00	1.350	0.40	0.50	0.30		
21	10:PZGeproj.	-3.00	0.200	0.40	0.50	0.30		
7	10:PZGeproj.	-3.00	0.400	0.40	0.50	0.30		
10	10:PZGeproj.	-3.00	0.226	0.40	0.50	0.30		
13	10:PZGeproj.	-3.00	2.700	0.40	0.50	0.30		
15	10:PZGeproj.	-3.00	0.210	0.40	0.50	0.30		

Project.....: 21490 - Brink16  
 Onderdeel....: Kapconstructie/ vlieringvloer

**SITUATIES BELAST/ONBELAST**

B.G:3 Ver. bel. pers. ed. (Q\_k)



**SITUATIES BELAST/ONBELAST**

Belastingtype: Q\_k

Nr Lastvelden belast	Lastvelden onbelast
1 6-17	1-5



Project.....: 21490 - Brink16  
 Onderdeel....: Kapconstructie/ vlieringvloer

**SITUATIES BELAST/ONBELAST**

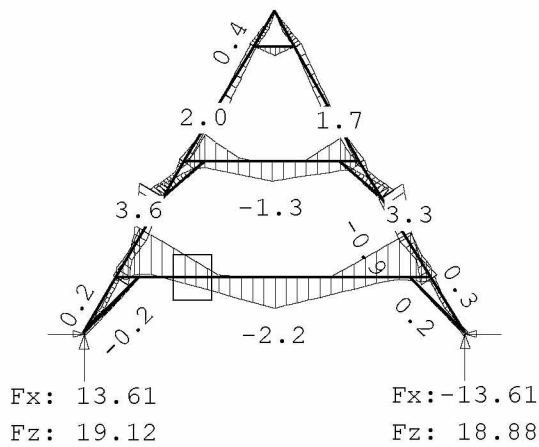
Belastingtype:  $Q_k$

Nr Lastvelden belast	Lastvelden onbelast
2 1-5,11-17	6-10
3 1-10,14-17	11-13
4 1-13,15-17	14
5 1-14	15-17

**MOMENTEN**

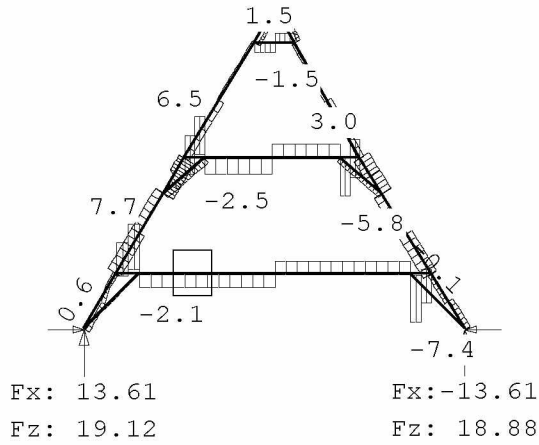
1e orde

B.G:3 Ver. bel. pers. ed. ( $Q_k$ )

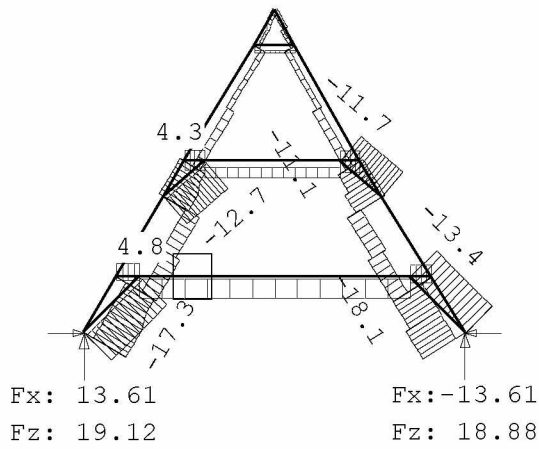


Project.....: 21490 - Brink16  
 Onderdeel....: Kapconstructie/ vlieringvloer

**DWARSKRACHTEN** 1e orde B.G:3 Ver. bel. pers. ed. (Q\_k)



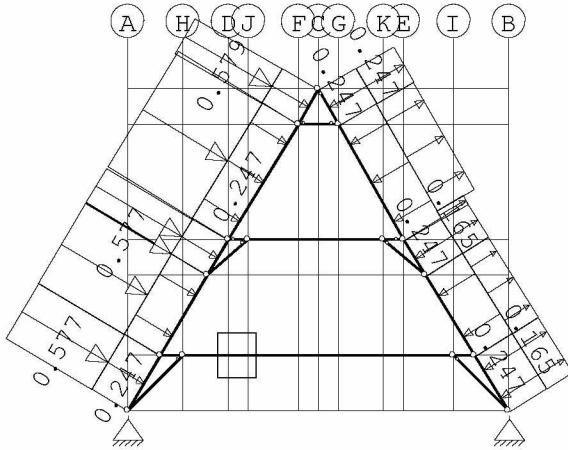
**NORMAALKRACHTEN** 1e orde B.G:3 Ver. bel. pers. ed. (Q\_k)



Project.....: 21490 - Brink16  
Onderdeel....: Kapconstructie/ vlieringvloer

**BELASTINGEN**

B.G:4 Wind van links onderdruk A



**STAAFBELASTINGEN**

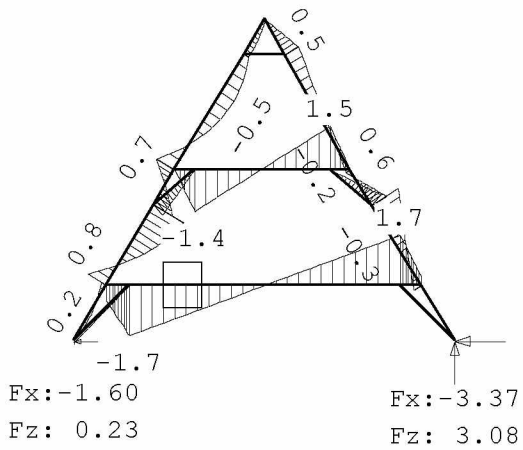
B.G:4 Wind van links onderdruk A

Staaftype	Type	Index	q1/p/m	q2	A	B	$\Psi_0$	$\Psi_1$	$\Psi_2$
1	1:QZLokaal	Qw1	-0.25	-0.25	0.000	0.000	0.00	0.20	0.00
9	1:QZLokaal	Qw1	-0.25	-0.25	0.000	0.000	0.00	0.20	0.00
16	1:QZLokaal	Qw1	-0.25	-0.25	0.000	0.000	0.00	0.20	0.00
3	1:QZLokaal	Qw1	-0.25	-0.25	0.000	0.000	0.00	0.20	0.00
6	1:QZLokaal	Qw1	-0.25	-0.25	0.000	0.000	0.00	0.20	0.00
2	1:QZLokaal	Qw1	-0.25	-0.25	0.000	0.000	0.00	0.20	0.00
8	1:QZLokaal	Qw1	-0.25	-0.25	0.000	0.000	0.00	0.20	0.00
5	1:QZLokaal	Qw1	-0.25	-0.25	0.000	0.000	0.00	0.20	0.00
19	1:QZLokaal	Qw1	-0.25	-0.25	0.000	0.000	0.00	0.20	0.00
11	1:QZLokaal	Qw1	-0.25	-0.25	0.000	0.000	0.00	0.20	0.00
1	1:QZLokaal		-0.00	-0.00	0.000	0.000	0.00	0.20	0.00
1	1:QZLokaal	Qw2	-0.58	-0.58	0.000	0.000	0.00	0.20	0.00
9	1:QZLokaal		-0.00	-0.00	0.000	0.000	0.00	0.20	0.00
9	1:QZLokaal	Qw2	-0.58	-0.58	0.000	0.000	0.00	0.20	0.00
16	1:QZLokaal		-0.00	-0.00	0.000	0.789	0.00	0.20	0.00
16	1:QZLokaal	Qw2	-0.58	-0.58	0.000	0.789	0.00	0.20	0.00
16	1:QZLokaal	Qw3	-0.57	-0.57	0.023	0.000	0.00	0.20	0.00
3	1:QZLokaal	Qw4	-0.57	-0.57	0.000	0.000	0.00	0.20	0.00
6	1:QZLokaal	Qw5	-0.58	-0.58	0.000	0.000	0.00	0.20	0.00
2	1:QZLokaal	Qw6	0.25	0.25	0.000	0.000	0.00	0.20	0.00
8	1:QZLokaal	Qw6	0.25	0.25	0.000	0.203	0.00	0.20	0.00
8	1:QZLokaal	Qw7	0.16	0.16	2.439	0.000	0.00	0.20	0.00
5	1:QZLokaal	Qw7	0.16	0.16	0.000	0.000	0.00	0.20	0.00
19	1:QZLokaal	Qw7	0.16	0.16	0.000	0.000	0.00	0.20	0.00
11	1:QZLokaal	Qw7	0.16	0.16	0.000	0.000	0.00	0.20	0.00

Project.....: 21490 - Brink16  
 Onderdeel....: Kapconstructie/ vlieringvloer

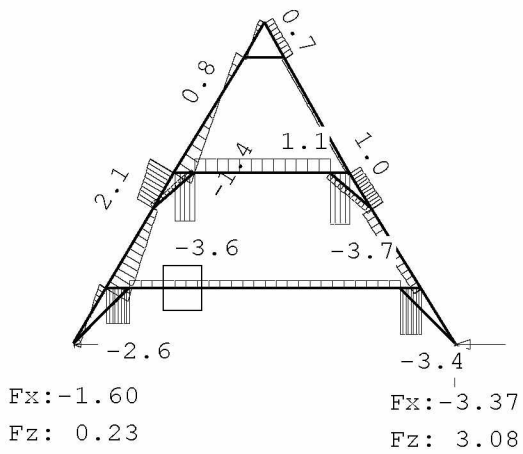
**MOMENTEN** 1e orde B.G:4 Wind van links onderdruk A

---



**DWARSKRACHTEN** 1e orde B.G:4 Wind van links onderdruk A

---





Project.....: 21490 - Brink16  
 Onderdeel....: Kapconstructie/ vlieringvloer

**STAAFBELASTINGEN**

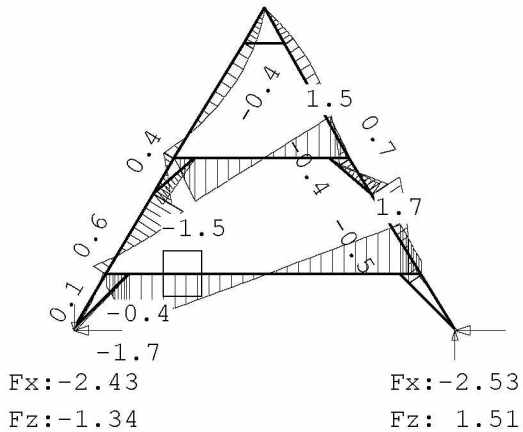
B.G:5 Wind van links overdruk A

StAAF	Type	Index	q1/p/m	q2	A	B	$\Psi_0$	$\Psi_1$	$\Psi_2$
1	1:QZLokaal	Qw2	-0.58	-0.58	0.000	0.000	0.00	0.20	0.00
9	1:QZLokaal		-0.00	-0.00	0.000	0.000	0.00	0.20	0.00
9	1:QZLokaal	Qw2	-0.58	-0.58	0.000	0.000	0.00	0.20	0.00
16	1:QZLokaal		-0.00	-0.00	0.000	0.789	0.00	0.20	0.00
16	1:QZLokaal	Qw2	-0.58	-0.58	0.000	0.789	0.00	0.20	0.00
16	1:QZLokaal	Qw3	-0.57	-0.57	0.023	0.000	0.00	0.20	0.00
3	1:QZLokaal	Qw4	-0.57	-0.57	0.000	0.000	0.00	0.20	0.00
6	1:QZLokaal	Qw5	-0.58	-0.58	0.000	0.000	0.00	0.20	0.00
2	1:QZLokaal	Qw6	0.25	0.25	0.000	0.000	0.00	0.20	0.00
8	1:QZLokaal	Qw6	0.25	0.25	0.000	0.203	0.00	0.20	0.00
8	1:QZLokaal	Qw7	0.16	0.16	2.439	0.000	0.00	0.20	0.00
5	1:QZLokaal	Qw7	0.16	0.16	0.000	0.000	0.00	0.20	0.00
19	1:QZLokaal	Qw7	0.16	0.16	0.000	0.000	0.00	0.20	0.00
11	1:QZLokaal	Qw7	0.16	0.16	0.000	0.000	0.00	0.20	0.00

**MOMENTEN**

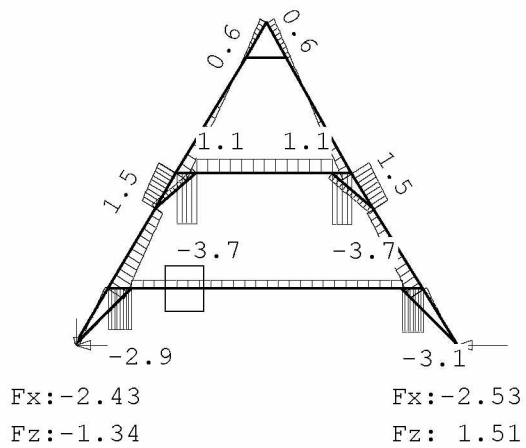
1e orde

B.G:5 Wind van links overdruk A

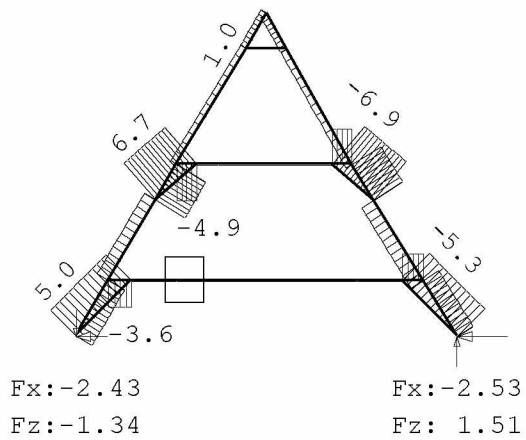


Project.....: 21490 - Brink16  
 Onderdeel....: Kapconstructie/ vlieringvloer

**DWARSKRACHTEN** 1e orde B.G:5 Wind van links overdruk A



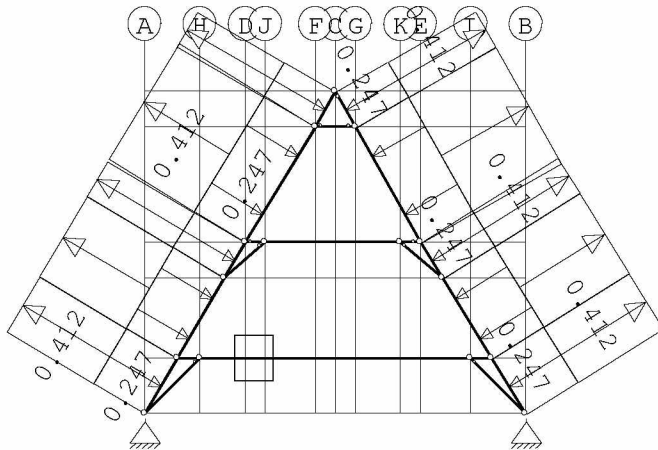
**NORMAALKRACHTEN** 1e orde B.G:5 Wind van links overdruk A



Project.....: 21490 - Brink16  
Onderdeel....: Kapconstructie/ vlieringvloer

**BELASTINGEN**

B.G:6 Wind loodrecht onderdruk A



**STAAFBELASTINGEN**

B.G:6 Wind loodrecht onderdruk A

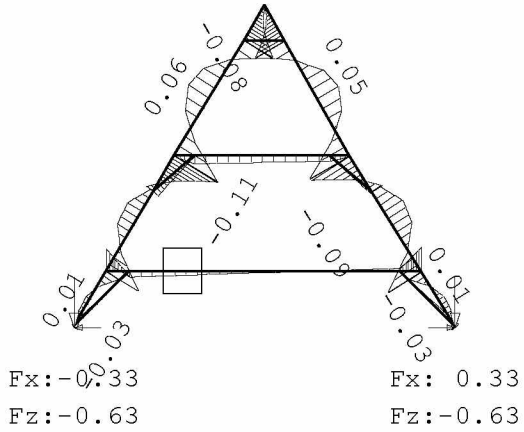
StAAF	Type	Index	q1/p/m	q2	A	B	$\Psi_0$	$\Psi_1$	$\Psi_2$
1	1:QZLokaal	Qw1	-0.25	-0.25	0.000	0.000	0.00	0.20	0.00
9	1:QZLokaal	Qw1	-0.25	-0.25	0.000	0.000	0.00	0.20	0.00
16	1:QZLokaal	Qw1	-0.25	-0.25	0.000	0.000	0.00	0.20	0.00
3	1:QZLokaal	Qw1	-0.25	-0.25	0.000	0.000	0.00	0.20	0.00
6	1:QZLokaal	Qw1	-0.25	-0.25	0.000	0.000	0.00	0.20	0.00
2	1:QZLokaal	Qw1	-0.25	-0.25	0.000	0.000	0.00	0.20	0.00
8	1:QZLokaal	Qw1	-0.25	-0.25	0.000	0.000	0.00	0.20	0.00
5	1:QZLokaal	Qw1	-0.25	-0.25	0.000	0.000	0.00	0.20	0.00
19	1:QZLokaal	Qw1	-0.25	-0.25	0.000	0.000	0.00	0.20	0.00
11	1:QZLokaal	Qw1	-0.25	-0.25	0.000	0.000	0.00	0.20	0.00
1	1:QZLokaal	Qw9	0.41	0.41	0.000	0.000	0.00	0.20	0.00
9	1:QZLokaal	Qw9	0.41	0.41	0.000	0.000	0.00	0.20	0.00
16	1:QZLokaal	Qw9	0.41	0.41	0.000	0.000	0.00	0.20	0.00
3	1:QZLokaal	Qw9	0.41	0.41	0.000	0.000	0.00	0.20	0.00
6	1:QZLokaal	Qw9	0.41	0.41	0.000	0.000	0.00	0.20	0.00
2	1:QZLokaal	Qw9	0.41	0.41	0.000	0.000	0.00	0.20	0.00
8	1:QZLokaal	Qw9	0.41	0.41	0.000	0.000	0.00	0.20	0.00
5	1:QZLokaal	Qw9	0.41	0.41	0.000	0.000	0.00	0.20	0.00
19	1:QZLokaal	Qw9	0.41	0.41	0.000	0.000	0.00	0.20	0.00
11	1:QZLokaal	Qw9	0.41	0.41	0.000	0.000	0.00	0.20	0.00



Project.....: 21490 - Brink16  
 Onderdeel....: Kapconstructie/ vlieringvloer

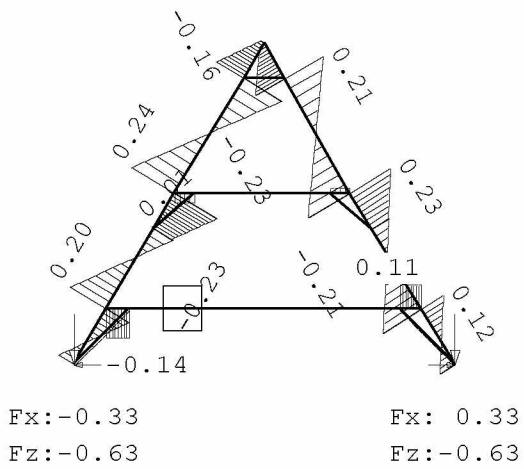
**MOMENTEN** 1e orde B.G:6 Wind loodrecht onderdruk A

---



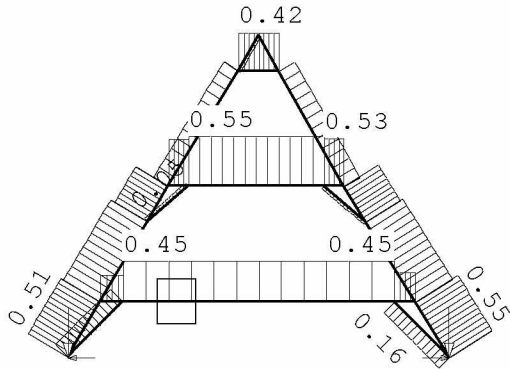
**DWARSKRACHTEN** 1e orde B.G:6 Wind loodrecht onderdruk A

---



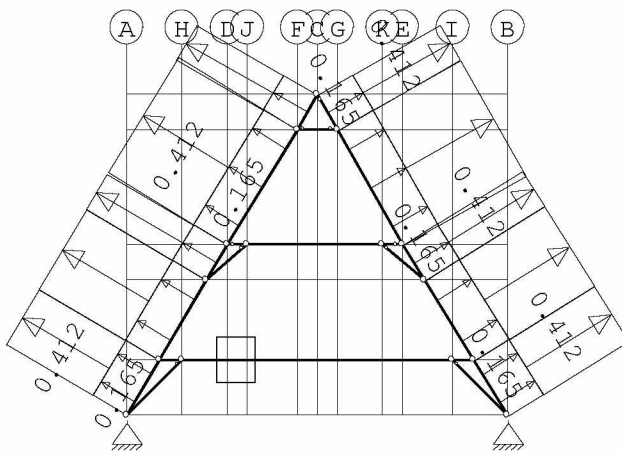
Project.....: 21490 - Brink16  
Onderdeel....: Kapconstructie/ vlieringvloer

**NORMAALKRACHTEN** 1e orde B.G:6 Wind loodrecht onderdruk A



$F_x: -0.33$                        $F_x: 0.33$   
 $F_z: -0.63$                        $F_z: -0.63$

**BELASTINGEN** B.G:7 Wind loodrecht overdruk A



**STAAFBELASTINGEN** B.G:7 Wind loodrecht overdruk A

StAAF	Type	Index	q1/p/m	q2	A	B	$\psi_0$	$\psi_1$	$\psi_2$
1	1:QZLokaal	Qw8	0.16	0.16	0.000	0.000	0.00	0.20	0.00
9	1:QZLokaal	Qw8	0.16	0.16	0.000	0.000	0.00	0.20	0.00
16	1:QZLokaal	Qw8	0.16	0.16	0.000	0.000	0.00	0.20	0.00
3	1:QZLokaal	Qw8	0.16	0.16	0.000	0.000	0.00	0.20	0.00
6	1:QZLokaal	Qw8	0.16	0.16	0.000	0.000	0.00	0.20	0.00
2	1:QZLokaal	Qw8	0.16	0.16	0.000	0.000	0.00	0.20	0.00
8	1:QZLokaal	Qw8	0.16	0.16	0.000	0.000	0.00	0.20	0.00
5	1:QZLokaal	Qw8	0.16	0.16	0.000	0.000	0.00	0.20	0.00
19	1:QZLokaal	Qw8	0.16	0.16	0.000	0.000	0.00	0.20	0.00
11	1:QZLokaal	Qw8	0.16	0.16	0.000	0.000	0.00	0.20	0.00

Project.....: 21490 - Brink16  
 Onderdeel....: Kapconstructie/ vlieringvloer

**STAAFBELASTINGEN**

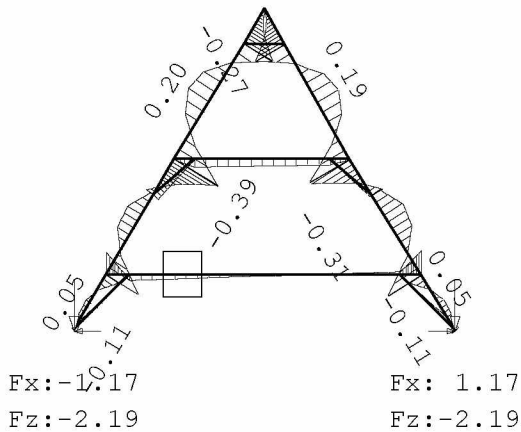
B.G:7 Wind loodrecht overdruk A

StAAF	Type	Index	q1/p/m	q2	A	B	$\Psi_0$	$\Psi_1$	$\Psi_2$
1	1:QZLokaal	Qw9	0.41	0.41	0.000	0.000	0.00	0.20	0.00
9	1:QZLokaal	Qw9	0.41	0.41	0.000	0.000	0.00	0.20	0.00
16	1:QZLokaal	Qw9	0.41	0.41	0.000	0.000	0.00	0.20	0.00
3	1:QZLokaal	Qw9	0.41	0.41	0.000	0.000	0.00	0.20	0.00
6	1:QZLokaal	Qw9	0.41	0.41	0.000	0.000	0.00	0.20	0.00
2	1:QZLokaal	Qw9	0.41	0.41	0.000	0.000	0.00	0.20	0.00
8	1:QZLokaal	Qw9	0.41	0.41	0.000	0.000	0.00	0.20	0.00
5	1:QZLokaal	Qw9	0.41	0.41	0.000	0.000	0.00	0.20	0.00
19	1:QZLokaal	Qw9	0.41	0.41	0.000	0.000	0.00	0.20	0.00
11	1:QZLokaal	Qw9	0.41	0.41	0.000	0.000	0.00	0.20	0.00

**MOMENTEN**

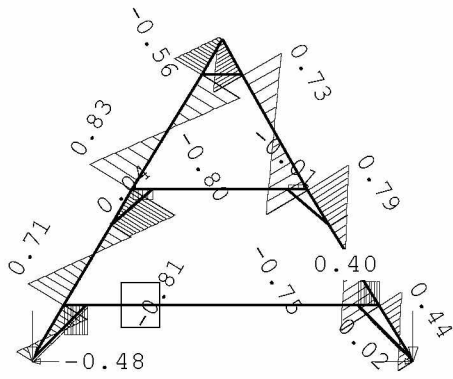
1e orde

B.G:7 Wind loodrecht overdruk A



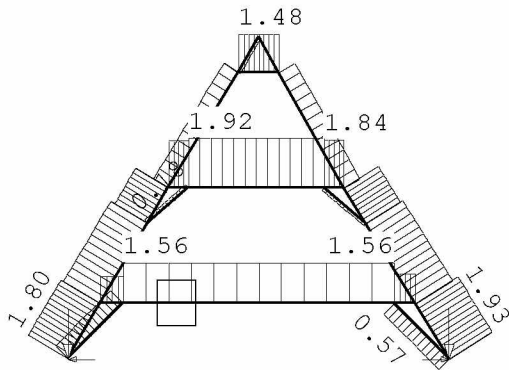
Project.....: 21490 - Brink16  
 Onderdeel....: Kapconstructie/ vlieringvloer

**DWARSKRACHTEN** 1e orde B.G:7 Wind loodrecht overdruk A



$F_x: -1.17$                        $F_x: 1.17$   
 $F_z: -2.19$                        $F_z: -2.19$

**NORMAALKRACHTEN** 1e orde B.G:7 Wind loodrecht overdruk A

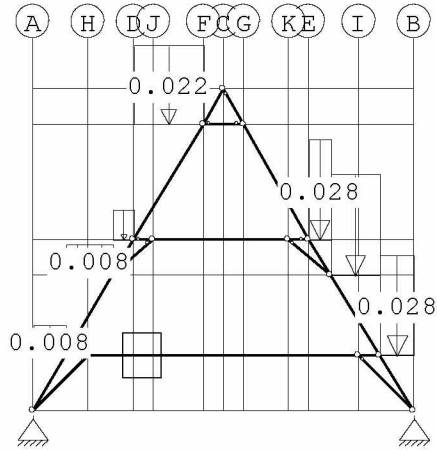


$F_x: -1.17$                        $F_x: 1.17$   
 $F_z: -2.19$                        $F_z: -2.19$

Project.....: 21490 - Brink16  
 Onderdeel....: Kapconstructie/ vlieringvloer

**BELASTINGEN**

B.G:8 Sneeuw A



**STAAFBELASTINGEN**

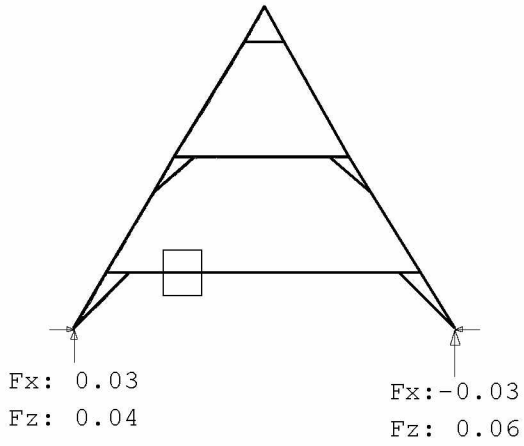
B.G:8 Sneeuw A

StAAF	Type	Index	q1/p/m	q2	A	B	$\Psi_0$	$\Psi_1$	$\Psi_2$
1	3:QZgeProj.	Qs1	-0.01	-0.01	0.000	0.000	0.00	0.20	0.00
3	3:QZgeProj.	Qs2	-0.02	-0.02	0.000	0.000	0.00	0.20	0.00
5	3:QZgeProj.	Qs3	-0.03	-0.03	0.000	0.000	0.00	0.20	0.00
9	3:QZgeProj.	Qs1	-0.01	-0.01	0.000	0.000	0.00	0.20	0.00
11	3:QZgeProj.	Qs3	-0.03	-0.03	0.000	0.000	0.00	0.20	0.00
16	3:QZgeProj.	Qs1	-0.01	-0.01	0.000	0.000	0.00	0.20	0.00
19	3:QZgeProj.	Qs3	-0.03	-0.03	0.000	0.000	0.00	0.20	0.00

Project.....: 21490 - Brink16  
 Onderdeel....: Kapconstructie/ vlieringvloer

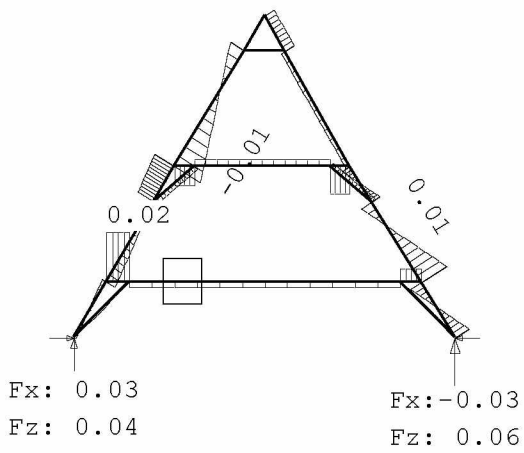
**MOMENTEN** 1e orde

B.G:8 Sneeuw A



**DWARSKRACHTEN** 1e orde

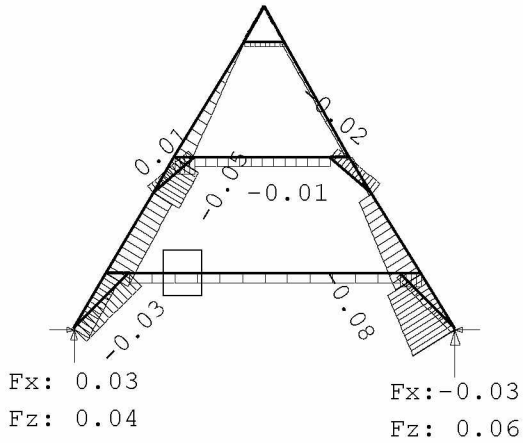
B.G:8 Sneeuw A



Project.....: 21490 - Brink16  
 Onderdeel....: Kapconstructie/ vlieringvloer

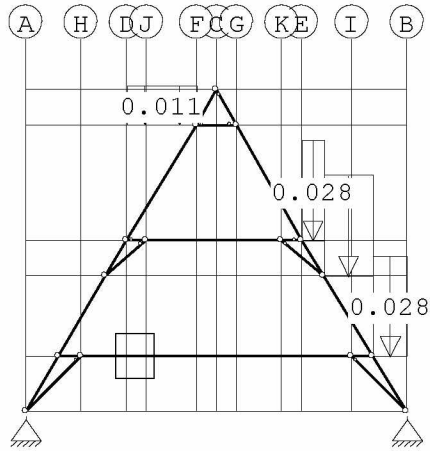
**NORMAALKRACHTEN** 1e orde

B.G:8 Sneeuw A



**BELASTINGEN**

B.G:9 Sneeuw B



**STAAFBELASTINGEN**

B.G:9 Sneeuw B

StAAF	Type	Index	q1/p/m	q2	A	B	$\psi_0$	$\psi_1$	$\psi_2$
3	3:QZgeProj.	Qs4	-0.01	-0.01	0.000	0.000	0.00	0.20	0.00
5	3:QZgeProj.	Qs3	-0.03	-0.03	0.000	0.000	0.00	0.20	0.00
11	3:QZgeProj.	Qs3	-0.03	-0.03	0.000	0.000	0.00	0.20	0.00
19	3:QZgeProj.	Qs3	-0.03	-0.03	0.000	0.000	0.00	0.20	0.00



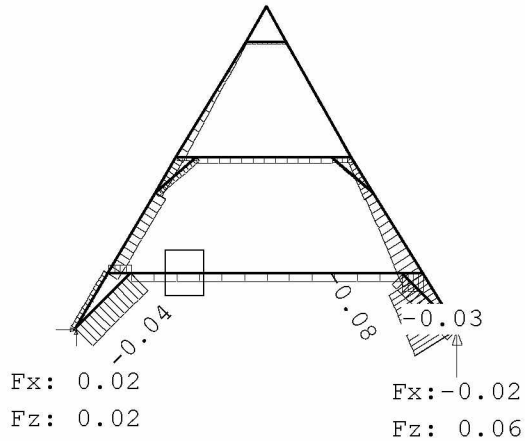


Project.....: 21490 - Brink16  
 Onderdeel....: Kapconstructie/ vlieringvloer

**NORMAALKRACHTEN**

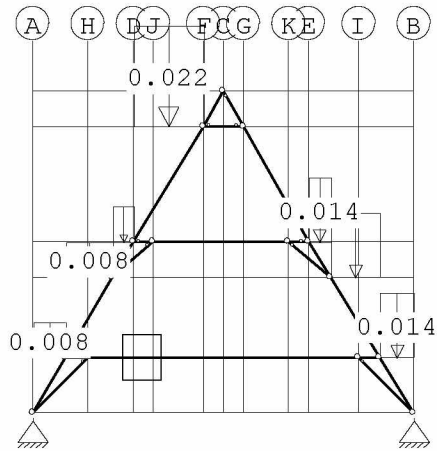
1e orde

B.G:9 Sneeuw B



**BELASTINGEN**

B.G:10 Sneeuw C



**STAAFBELASTINGEN**

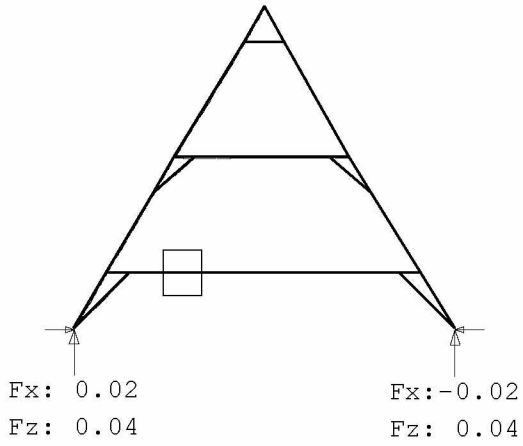
B.G:10 Sneeuw C

StAAF	Type	Index	q1/p/m	q2	A	B	$\psi_0$	$\psi_1$	$\psi_2$
1	3:QZgeProj.	Qs1	-0.01	-0.01	0.000	0.000	0.00	0.20	0.00
3	3:QZgeProj.	Qs2	-0.02	-0.02	0.000	0.000	0.00	0.20	0.00
5	3:QZgeProj.	Qs5	-0.01	-0.01	0.000	0.000	0.00	0.20	0.00
9	3:QZgeProj.	Qs1	-0.01	-0.01	0.000	0.000	0.00	0.20	0.00
11	3:QZgeProj.	Qs5	-0.01	-0.01	0.000	0.000	0.00	0.20	0.00
16	3:QZgeProj.	Qs1	-0.01	-0.01	0.000	0.000	0.00	0.20	0.00
19	3:QZgeProj.	Qs5	-0.01	-0.01	0.000	0.000	0.00	0.20	0.00

Project.....: 21490 - Brink16  
 Onderdeel....: Kapconstructie/ vlieringvloer

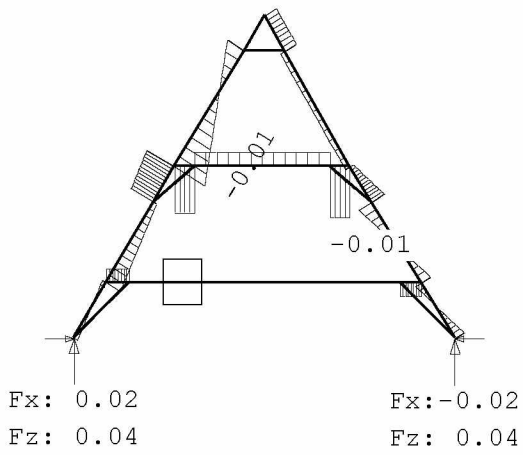
**MOMENTEN** 1e orde

B.G:10 Sneeuw C



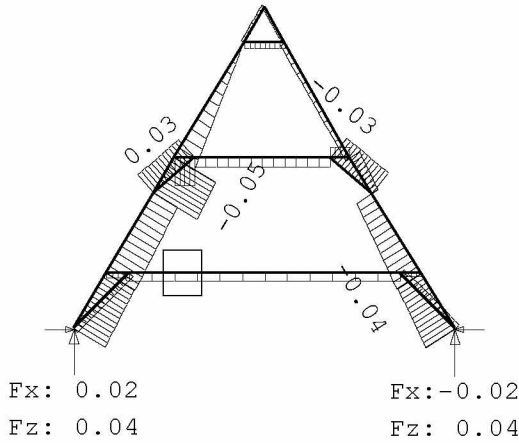
**DWARSKRACHTEN** 1e orde

B.G:10 Sneeuw C



Project.....: 21490 - Brink16  
Onderdeel....: Kapconstructie/ vlieringvloer

**NORMAALKRACHTEN** 1e orde B.G:10 Sneeuw C



**REACTIES** 1e orde

Kn.	B.G.	X-min	X-max	Z-min	Z-max	M-min	M-max
1	1	5.06		4.69			
1	2	6.52	13.41	7.08	11.36		
1	3	9.06	13.61	13.13	19.12		
1	4	-1.60		0.23			
1	5	-2.43		-1.34			
1	6	-0.33		-0.63			
1	7	-1.17		-2.19			
1	8	0.03		0.04			
1	9	0.02		0.02			
1	10	0.02		0.04			
3	1	-5.06		4.64			
3	2	-13.41	-6.52	6.99	11.25		
3	3	-13.61	-9.06	12.94	18.88		
3	4	-3.37		3.08			
3	5	-2.53		1.51			
3	6	0.33		-0.63			
3	7	1.17		-2.19			
3	8	-0.03		0.06			
3	9	-0.02		0.06			
3	10	-0.02		0.04			

**BEREKENINGSTATUS**

B.C.	Iteratie	Status
1	3	Nauwkeurigheit bereikt

Project.....: 21490 - Brink16  
Onderdeel....: Kapconstructie/ vlieringvloer

**BEREKENINGSTATUS**

B.C.	Iteratie	Status
2	3	Nauwkeurigheid bereikt
3	3	Nauwkeurigheid bereikt
4	3	Nauwkeurigheid bereikt
5	3	Nauwkeurigheid bereikt
6	3	Nauwkeurigheid bereikt
7	3	Nauwkeurigheid bereikt
8	3	Nauwkeurigheid bereikt
9	3	Nauwkeurigheid bereikt
10	3	Nauwkeurigheid bereikt
11	3	Nauwkeurigheid bereikt
12	3	Nauwkeurigheid bereikt
13	3	Nauwkeurigheid bereikt
14	3	Nauwkeurigheid bereikt
15	3	Nauwkeurigheid bereikt
16	3	Nauwkeurigheid bereikt
17	3	Nauwkeurigheid bereikt
18	3	Nauwkeurigheid bereikt
19	3	Nauwkeurigheid bereikt
20	3	Nauwkeurigheid bereikt
21	3	Nauwkeurigheid bereikt
22	3	Nauwkeurigheid bereikt
23	3	Nauwkeurigheid bereikt
24	3	Nauwkeurigheid bereikt
25	3	Nauwkeurigheid bereikt
26	3	Nauwkeurigheid bereikt
27	3	Nauwkeurigheid bereikt
28	3	Nauwkeurigheid bereikt
29	3	Nauwkeurigheid bereikt
30	3	Nauwkeurigheid bereikt
31	3	Nauwkeurigheid bereikt
32	3	Nauwkeurigheid bereikt
33	3	Nauwkeurigheid bereikt
34	3	Nauwkeurigheid bereikt
35	3	Nauwkeurigheid bereikt
36	3	Nauwkeurigheid bereikt
37	3	Nauwkeurigheid bereikt
38	3	Nauwkeurigheid bereikt
39	3	Nauwkeurigheid bereikt
40	3	Nauwkeurigheid bereikt
41	3	Nauwkeurigheid bereikt
42	3	Nauwkeurigheid bereikt
43	3	Nauwkeurigheid bereikt
44	3	Nauwkeurigheid bereikt
45	3	Nauwkeurigheid bereikt
46	3	Nauwkeurigheid bereikt
47	3	Nauwkeurigheid bereikt

Project.....: 21490 - Brink16  
 Onderdeel....: Kapconstructie/ vlieringvloer

**BEREKENINGSTATUS**

B.C.	Iteratie	Status
48	3	Nauwkeurigheid bereikt
49	3	Nauwkeurigheid bereikt
50	3	Nauwkeurigheid bereikt
51	3	Nauwkeurigheid bereikt
52	3	Nauwkeurigheid bereikt
53	1	Lineaire berekening
54	1	Lineaire berekening
55	1	Lineaire berekening
56	1	Lineaire berekening
57	1	Lineaire berekening
58	1	Lineaire berekening
59	1	Lineaire berekening
60	1	Lineaire berekening
61	1	Lineaire berekening
62	1	Lineaire berekening
63	1	Lineaire berekening
64	1	Lineaire berekening
65	1	Lineaire berekening
66	1	Lineaire berekening
67	1	Lineaire berekening
68	1	Lineaire berekening
69	1	Lineaire berekening
70	1	Lineaire berekening
71	1	Lineaire berekening
72	1	Lineaire berekening
73	1	Lineaire berekening
74	1	Lineaire berekening
75	1	Lineaire berekening
76	1	Lineaire berekening
77	1	Lineaire berekening
78	1	Lineaire berekening
79	1	Lineaire berekening
80	1	Lineaire berekening
81	1	Lineaire berekening
82	1	Lineaire berekening
83	1	Lineaire berekening
84	1	Lineaire berekening
85	1	Lineaire berekening
86	1	Lineaire berekening
87	1	Lineaire berekening
88	1	Lineaire berekening
89	1	Lineaire berekening
90	1	Lineaire berekening
91	1	Lineaire berekening
92	1	Lineaire berekening
93	1	Lineaire berekening

Project.....: 21490 - Brink16  
 Onderdeel....: Kapconstructie/ vlieringvloer

**BEREKENINGSTATUS**

B.C.	Iteratie	Status
94	1	Lineaire berekening
95	1	Lineaire berekening
96	1	Lineaire berekening
97	1	Lineaire berekening
98	1	Lineaire berekening
99	1	Lineaire berekening
100	1	Lineaire berekening
101	1	Lineaire berekening
102	1	Lineaire berekening
103	1	Lineaire berekening

**BELASTINGCOMBINATIES**

BC	Type
1	Fund. 1.20 $G_{k,1}$
2	Fund. 0.90 $G_{k,1}$
3	Fund. 1.20 $G_{k,1}$ + 1.30 $\psi_0 Q_{k,2}$
4	Fund. 1.20 $G_{k,1}$ + 1.30 $\psi_0 Q_{k,3}$
5	Fund. 1.15 $G_{k,1}$ + 1.30 $Q_{k,2}$
6	Fund. 1.15 $G_{k,1}$ + 1.30 $Q_{k,3}$
7	Fund. 1.15 $G_{k,1}$ + 1.40 $Q_{k,4}$
8	Fund. 1.15 $G_{k,1}$ + 1.40 $Q_{k,5}$
9	Fund. 1.15 $G_{k,1}$ + 1.40 $Q_{k,6}$
10	Fund. 1.15 $G_{k,1}$ + 1.40 $Q_{k,7}$
11	Fund. 1.15 $G_{k,1}$ + 1.30 $Q_{k,8}$
12	Fund. 1.15 $G_{k,1}$ + 1.30 $Q_{k,9}$
13	Fund. 1.15 $G_{k,1}$ + 1.30 $Q_{k,10}$
14	Fund. 0.90 $G_{k,1}$ + 1.30 $Q_{k,2}$
15	Fund. 0.90 $G_{k,1}$ + 1.30 $\psi_0 Q_{k,2}$
16	Fund. 0.90 $G_{k,1}$ + 1.30 $Q_{k,3}$
17	Fund. 0.90 $G_{k,1}$ + 1.30 $\psi_0 Q_{k,3}$
18	Fund. 0.90 $G_{k,1}$ + 1.40 $Q_{k,4}$
19	Fund. 0.90 $G_{k,1}$ + 1.40 $Q_{k,5}$
20	Fund. 0.90 $G_{k,1}$ + 1.40 $Q_{k,6}$
21	Fund. 0.90 $G_{k,1}$ + 1.40 $Q_{k,7}$
22	Fund. 0.90 $G_{k,1}$ + 1.30 $Q_{k,8}$
23	Fund. 0.90 $G_{k,1}$ + 1.30 $Q_{k,9}$
24	Fund. 0.90 $G_{k,1}$ + 1.30 $Q_{k,10}$
25	Fund. 1.15 $G_{k,1}$ + 1.40 $Q_{k,4}$ + 1.30 $\psi_0 Q_{k,2}$
26	Fund. 1.15 $G_{k,1}$ + 1.40 $Q_{k,4}$ + 1.30 $\psi_0 Q_{k,3}$
27	Fund. 1.15 $G_{k,1}$ + 1.40 $Q_{k,5}$ + 1.30 $\psi_0 Q_{k,2}$
28	Fund. 1.15 $G_{k,1}$ + 1.40 $Q_{k,5}$ + 1.30 $\psi_0 Q_{k,3}$
29	Fund. 1.15 $G_{k,1}$ + 1.40 $Q_{k,6}$ + 1.30 $\psi_0 Q_{k,2}$
30	Fund. 1.15 $G_{k,1}$ + 1.40 $Q_{k,6}$ + 1.30 $\psi_0 Q_{k,3}$

Project.....: 21490 - Brink16  
 Onderdeel....: Kapconstructie/ vlieringvloer

**BELASTINGCOMBINATIES**

BC Type	
31 Fund.	1.15 $G_{k,1}$ + 1.40 $Q_{k,7}$ + 1.30 $\psi_0$ $Q_{k,2}$
32 Fund.	1.15 $G_{k,1}$ + 1.40 $Q_{k,7}$ + 1.30 $\psi_0$ $Q_{k,3}$
33 Fund.	1.15 $G_{k,1}$ + 1.30 $Q_{k,8}$ + 1.30 $\psi_0$ $Q_{k,2}$
34 Fund.	1.15 $G_{k,1}$ + 1.30 $Q_{k,8}$ + 1.30 $\psi_0$ $Q_{k,3}$
35 Fund.	1.15 $G_{k,1}$ + 1.30 $Q_{k,9}$ + 1.30 $\psi_0$ $Q_{k,2}$
36 Fund.	1.15 $G_{k,1}$ + 1.30 $Q_{k,9}$ + 1.30 $\psi_0$ $Q_{k,3}$
37 Fund.	1.15 $G_{k,1}$ + 1.30 $Q_{k,10}$ + 1.30 $\psi_0$ $Q_{k,2}$
38 Fund.	1.15 $G_{k,1}$ + 1.30 $Q_{k,10}$ + 1.30 $\psi_0$ $Q_{k,3}$
39 Fund.	0.90 $G_{k,1}$ + 1.40 $Q_{k,4}$ + 1.30 $\psi_0$ $Q_{k,2}$
40 Fund.	0.90 $G_{k,1}$ + 1.40 $Q_{k,4}$ + 1.30 $\psi_0$ $Q_{k,3}$
41 Fund.	0.90 $G_{k,1}$ + 1.40 $Q_{k,5}$ + 1.30 $\psi_0$ $Q_{k,2}$
42 Fund.	0.90 $G_{k,1}$ + 1.40 $Q_{k,5}$ + 1.30 $\psi_0$ $Q_{k,3}$
43 Fund.	0.90 $G_{k,1}$ + 1.40 $Q_{k,6}$ + 1.30 $\psi_0$ $Q_{k,2}$
44 Fund.	0.90 $G_{k,1}$ + 1.40 $Q_{k,6}$ + 1.30 $\psi_0$ $Q_{k,3}$
45 Fund.	0.90 $G_{k,1}$ + 1.40 $Q_{k,7}$ + 1.30 $\psi_0$ $Q_{k,2}$
46 Fund.	0.90 $G_{k,1}$ + 1.40 $Q_{k,7}$ + 1.30 $\psi_0$ $Q_{k,3}$
47 Fund.	0.90 $G_{k,1}$ + 1.30 $Q_{k,8}$ + 1.30 $\psi_0$ $Q_{k,2}$
48 Fund.	0.90 $G_{k,1}$ + 1.30 $Q_{k,8}$ + 1.30 $\psi_0$ $Q_{k,3}$
49 Fund.	0.90 $G_{k,1}$ + 1.30 $Q_{k,9}$ + 1.30 $\psi_0$ $Q_{k,2}$
50 Fund.	0.90 $G_{k,1}$ + 1.30 $Q_{k,9}$ + 1.30 $\psi_0$ $Q_{k,3}$
51 Fund.	0.90 $G_{k,1}$ + 1.30 $Q_{k,10}$ + 1.30 $\psi_0$ $Q_{k,2}$
52 Fund.	0.90 $G_{k,1}$ + 1.30 $Q_{k,10}$ + 1.30 $\psi_0$ $Q_{k,3}$
53 Kar.	1.00 $G_{k,1}$ + 1.00 $Q_{k,2}$
54 Kar.	1.00 $G_{k,1}$ + 1.00 $Q_{k,3}$
55 Kar.	1.00 $G_{k,1}$ + 1.00 $Q_{k,4}$
56 Kar.	1.00 $G_{k,1}$ + 1.00 $Q_{k,5}$
57 Kar.	1.00 $G_{k,1}$ + 1.00 $Q_{k,6}$
58 Kar.	1.00 $G_{k,1}$ + 1.00 $Q_{k,7}$
59 Kar.	1.00 $G_{k,1}$ + 1.00 $Q_{k,8}$
60 Kar.	1.00 $G_{k,1}$ + 1.00 $Q_{k,9}$
61 Kar.	1.00 $G_{k,1}$ + 1.00 $Q_{k,10}$
62 Kar.	1.00 $G_{k,1}$ + 1.00 $Q_{k,4}$ + 1.00 $\psi_0$ $Q_{k,2}$
63 Kar.	1.00 $G_{k,1}$ + 1.00 $Q_{k,4}$ + 1.00 $\psi_0$ $Q_{k,3}$
64 Kar.	1.00 $G_{k,1}$ + 1.00 $Q_{k,5}$ + 1.00 $\psi_0$ $Q_{k,2}$
65 Kar.	1.00 $G_{k,1}$ + 1.00 $Q_{k,5}$ + 1.00 $\psi_0$ $Q_{k,3}$
66 Kar.	1.00 $G_{k,1}$ + 1.00 $Q_{k,6}$ + 1.00 $\psi_0$ $Q_{k,2}$
67 Kar.	1.00 $G_{k,1}$ + 1.00 $Q_{k,6}$ + 1.00 $\psi_0$ $Q_{k,3}$
68 Kar.	1.00 $G_{k,1}$ + 1.00 $Q_{k,7}$ + 1.00 $\psi_0$ $Q_{k,2}$
69 Kar.	1.00 $G_{k,1}$ + 1.00 $Q_{k,7}$ + 1.00 $\psi_0$ $Q_{k,3}$

Project.....: 21490 - Brink16  
Onderdeel....: Kapconstructie/ vlieringvloer

**BELASTINGCOMBINATIES**

BC	Type										
70	Kar.	1.00	$G_{k,1}$	+	1.00	$Q_{k,8}$	+	1.00	$\psi_0$	$Q_{k,2}$	
71	Kar.	1.00	$G_{k,1}$	+	1.00	$Q_{k,8}$	+	1.00	$\psi_0$	$Q_{k,3}$	
72	Kar.	1.00	$G_{k,1}$	+	1.00	$Q_{k,9}$	+	1.00	$\psi_0$	$Q_{k,2}$	
73	Kar.	1.00	$G_{k,1}$	+	1.00	$Q_{k,9}$	+	1.00	$\psi_0$	$Q_{k,3}$	
74	Kar.	1.00	$G_{k,1}$	+	1.00	$Q_{k,10}$	+	1.00	$\psi_0$	$Q_{k,2}$	
75	Kar.	1.00	$G_{k,1}$	+	1.00	$Q_{k,10}$	+	1.00	$\psi_0$	$Q_{k,3}$	
76	Quas.	1.00	$G_{k,1}$								
77	Quas.	1.00	$G_{k,1}$	+	1.00	$\psi_2$	$Q_{k,2}$				
78	Quas.	1.00	$G_{k,1}$	+	1.00	$\psi_2$	$Q_{k,3}$				
79	Freq.	1.00	$G_{k,1}$								
80	Freq.	1.00	$G_{k,1}$	+	1.00	$\psi_1$	$Q_{k,2}$				
81	Freq.	1.00	$G_{k,1}$	+	1.00	$\psi_1$	$Q_{k,3}$				
82	Freq.	1.00	$G_{k,1}$	+	1.00	$\psi_1$	$Q_{k,4}$				
83	Freq.	1.00	$G_{k,1}$	+	1.00	$\psi_1$	$Q_{k,5}$				
84	Freq.	1.00	$G_{k,1}$	+	1.00	$\psi_1$	$Q_{k,6}$				
85	Freq.	1.00	$G_{k,1}$	+	1.00	$\psi_1$	$Q_{k,7}$				
86	Freq.	1.00	$G_{k,1}$	+	1.00	$\psi_1$	$Q_{k,8}$				
87	Freq.	1.00	$G_{k,1}$	+	1.00	$\psi_1$	$Q_{k,9}$				
88	Freq.	1.00	$G_{k,1}$	+	1.00	$\psi_1$	$Q_{k,10}$				
89	Freq.	1.00	$G_{k,1}$	+	1.00	$\psi_1$	$Q_{k,4}$	+	1.00	$\psi_2$	$Q_{k,2}$
90	Freq.	1.00	$G_{k,1}$	+	1.00	$\psi_1$	$Q_{k,4}$	+	1.00	$\psi_2$	$Q_{k,3}$
91	Freq.	1.00	$G_{k,1}$	+	1.00	$\psi_1$	$Q_{k,5}$	+	1.00	$\psi_2$	$Q_{k,2}$
92	Freq.	1.00	$G_{k,1}$	+	1.00	$\psi_1$	$Q_{k,5}$	+	1.00	$\psi_2$	$Q_{k,3}$
93	Freq.	1.00	$G_{k,1}$	+	1.00	$\psi_1$	$Q_{k,6}$	+	1.00	$\psi_2$	$Q_{k,2}$
94	Freq.	1.00	$G_{k,1}$	+	1.00	$\psi_1$	$Q_{k,6}$	+	1.00	$\psi_2$	$Q_{k,3}$
95	Freq.	1.00	$G_{k,1}$	+	1.00	$\psi_1$	$Q_{k,7}$	+	1.00	$\psi_2$	$Q_{k,2}$
96	Freq.	1.00	$G_{k,1}$	+	1.00	$\psi_1$	$Q_{k,7}$	+	1.00	$\psi_2$	$Q_{k,3}$
97	Freq.	1.00	$G_{k,1}$	+	1.00	$\psi_1$	$Q_{k,8}$	+	1.00	$\psi_2$	$Q_{k,2}$
98	Freq.	1.00	$G_{k,1}$	+	1.00	$\psi_1$	$Q_{k,8}$	+	1.00	$\psi_2$	$Q_{k,3}$
99	Freq.	1.00	$G_{k,1}$	+	1.00	$\psi_1$	$Q_{k,9}$	+	1.00	$\psi_2$	$Q_{k,2}$
100	Freq.	1.00	$G_{k,1}$	+	1.00	$\psi_1$	$Q_{k,9}$	+	1.00	$\psi_2$	$Q_{k,3}$
101	Freq.	1.00	$G_{k,1}$	+	1.00	$\psi_1$	$Q_{k,10}$	+	1.00	$\psi_2$	$Q_{k,2}$
102	Freq.	1.00	$G_{k,1}$	+	1.00	$\psi_1$	$Q_{k,10}$	+	1.00	$\psi_2$	$Q_{k,3}$
103	Blij.	1.00	$G_{k,1}$								



Project.....: 21490 - Brink16  
Onderdeel....: Kapconstructie/ vlieringvloer

## **GUNSTIGE WERKING PERMANENTE BELASTINGEN**

BC Staven met gunstige werking

- 1 Geen
- 2 Alle staven de factor:0.90
- 3 Geen
- 4 Geen
- 5 Geen
- 6 Geen
- 7 Geen
- 8 Geen
- 9 Geen
- 10 Geen
- 11 Geen
- 12 Geen
- 13 Geen
- 14 Alle staven de factor:0.90
- 15 Alle staven de factor:0.90
- 16 Alle staven de factor:0.90
- 17 Alle staven de factor:0.90
- 18 Alle staven de factor:0.90
- 19 Alle staven de factor:0.90
- 20 Alle staven de factor:0.90
- 21 Alle staven de factor:0.90
- 22 Alle staven de factor:0.90
- 23 Alle staven de factor:0.90
- 24 Alle staven de factor:0.90
- 25 Geen
- 26 Geen
- 27 Geen
- 28 Geen
- 29 Geen
- 30 Geen
- 31 Geen
- 32 Geen
- 33 Geen
- 34 Geen
- 35 Geen
- 36 Geen
- 37 Geen
- 38 Geen
- 39 Alle staven de factor:0.90
- 40 Alle staven de factor:0.90
- 41 Alle staven de factor:0.90
- 42 Alle staven de factor:0.90
- 43 Alle staven de factor:0.90
- 44 Alle staven de factor:0.90
- 45 Alle staven de factor:0.90
- 46 Alle staven de factor:0.90
- 47 Alle staven de factor:0.90
- 48 Alle staven de factor:0.90

Project.....: 21490 - Brink16  
 Onderdeel....: Kapconstructie/ vlieringvloer

**GUNSTIGE WERKING PERMANENTE BELASTINGEN**

BC Staven met gunstige werking

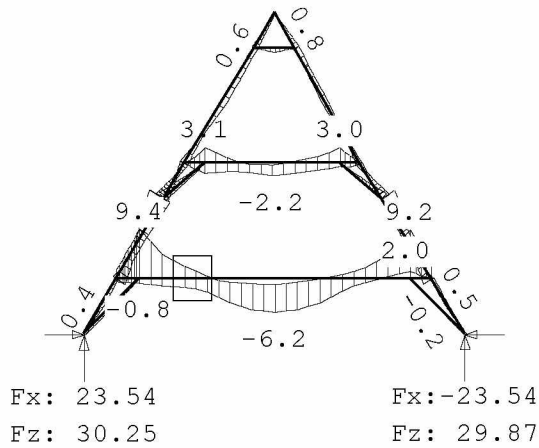
- 49 Alle staven de factor:0.90
- 50 Alle staven de factor:0.90
- 51 Alle staven de factor:0.90
- 52 Alle staven de factor:0.90

**OMHULLENDE VAN DE FUNDAMENTELE COMBINATIES**

**MOMENTEN**

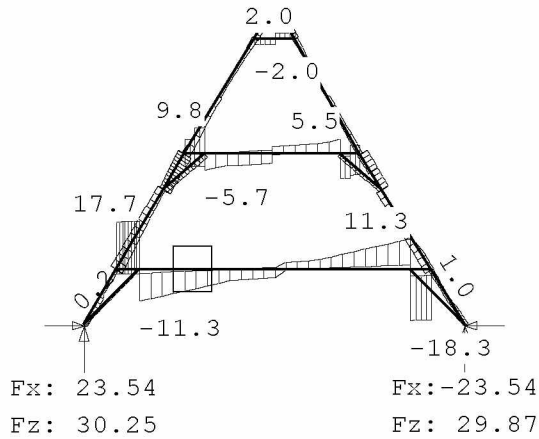
2e orde

Fundamentele combinatie

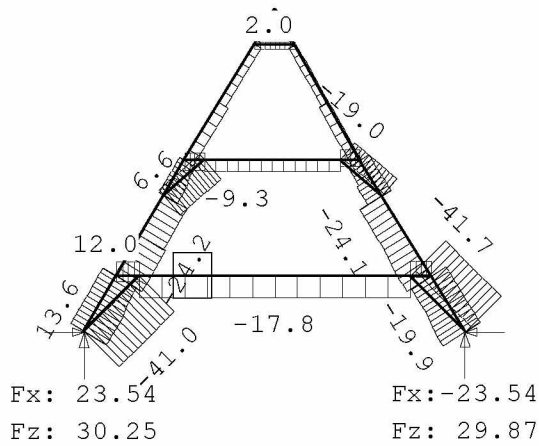


Project.....: 21490 - Brink16  
 Onderdeel....: Kapconstructie/ vlieringvloer

**DWARSKRACHTEN** 2e orde Fundamentele combinatie



**NORMAALKRACHTEN** 2e orde Fundamentele combinatie



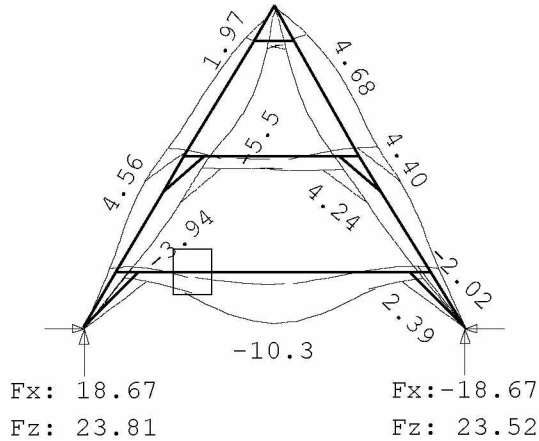
**REACTIES** 2e orde Fundamentele combinatie

Kn.	X-min	X-max	Z-min	Z-max	M-min	M-max
1	1.13	23.54	1.15	30.25		
3	-23.54	-2.92	1.10	29.87		

Project.....: 21490 - Brink16  
Onderdeel....: Kapconstructie/ vlieringvloer

## OMHULLENDE VAN DE KARAKTERISTIEKE COMBINATIES

**VERPLAATSINGEN**      1e orde [mm]      Karakteristieke combinatie



### MATERIAALGEGEVENS

Mt	Kwaliteit	$f_{m,y,k}$ [N/mm <sup>2</sup> ]	$\rho_k$ [kg/m <sup>3</sup> ]	$\rho_{mean}$ [kg/m <sup>3</sup> ]	$f_{t,0,k}$ [N/mm <sup>2</sup> ]	$f_{t,90,k}$ [N/mm <sup>2</sup> ]	$f_{c,0,k}$ [N/mm <sup>2</sup> ]	$f_{c,90,k}$ [N/mm <sup>2</sup> ]	$f_{v,k}$ [N/mm <sup>2</sup> ]
1	C18	18	320	380	10.0	0.4	18.0	2.2	3.4

### MATERIAALGEGEVENS (vervolg)

Mt	Kwaliteit	$G_{mean}$ [N/mm <sup>2</sup> ]	$E_{0,05}$ [N/mm <sup>2</sup> ]	$E_{90,mean}$ [N/mm <sup>2</sup> ]	$E_{0,mean}$ [N/mm <sup>2</sup> ]	Klimaatklasse	$k_{def}$	$E_{0,mean,fin}$ [N/mm <sup>2</sup> ]
1	C18	560	6000	300	9000	I	0.60	5625

### KIPSTABILITEIT

Staaf	Plts. aangr.		l sys. [m]	Kipsteunafstanden [m]
1	1.0*h	boven:	1.28	0;1.276
		onder:	1.28	0;1.276
2	1.0*h	boven:	0.81	0;0.806
		onder:	0.81	0;0.806
3	1.0*h	boven:	2.69	2.693
		onder:	2.69	2.693
4	1.0*h	boven:	0.40	0;0.400
		onder:	0.40	0;0.400
5	1.0*h	boven:	0.82	0.823
		onder:	0.82	0.823
6	1.0*h	boven:	0.81	0.806
		onder:	0.81	0.806

Project.....: 21490 - Brink16  
Onderdeel....: Kapconstructie/ vlieringvloer

### KIPSTABILITEIT

Staaft	Plts. aangr.		l sys. [m]	Kipsteunafstanden [m]
7	1.0*h	boven:	0.80	0;0.800
		onder:	0.80	0;0.800
8	1.0*h	boven:	2.64	2.642
		onder:	2.64	2.642
9	1.0*h	boven:	1.86	1.856
		onder:	1.86	1.856
10	1.0*h	boven:	0.45	0;0.453
		onder:	0.45	0;0.453
11	1.0*h	boven:	1.29	1.293
		onder:	1.29	1.293
12	1.0*h	boven:	1.56	0;1.556
		onder:	1.56	0;1.556
13	1.0*h	boven:	5.40	5.400
		onder:	5.40	5.400
14	1.0*h	boven:	1.56	0;1.556
		onder:	1.56	0;1.556
15	1.0*h	boven:	0.42	0.421
		onder:	0.42	0.421
16	1.0*h	boven:	0.81	0.812
		onder:	0.81	0.812
17	1.0*h	boven:	1.07	0;1.072
		onder:	1.07	0;1.072
18	1.0*h	boven:	2.70	2.700
		onder:	2.70	2.700
19	1.0*h	boven:	1.88	1.881
		onder:	1.88	1.881
20	1.0*h	boven:	1.09	0;1.088
		onder:	1.09	0;1.088
21	1.0*h	boven:	0.40	0.400
		onder:	0.40	0.400

### STABILITEIT

Stf	b <sub>gem</sub> [mm]	h <sub>gem</sub> [mm]	l <sub>sys</sub> [mm]	l <sub>buc, y/z</sub> [mm]		$\lambda_y$	$\lambda_z$	$\lambda_{rel, y/z}$	$\beta_c$	k <sub>y</sub>	k <sub>z</sub>	k <sub>c, y</sub>	k <sub>c, z</sub>	
1	170	170	1276	nvt 1276		26.0	26.0	0.453	0.453	0.2	0.618	0.618	0.963	0.963
2	80	140	806	nvt 806		19.9	34.9	0.348	0.609	0.2	0.565	0.716	0.989	0.915
3	80	140	2693	nvt 2693		66.6	116.6	1.162	2.033	0.2	1.261	2.739	0.571	0.219
4	170	170	400	nvt 400		8.2	8.2	0.142	0.142	0.2	0.494	0.494	1.033	1.033
5	170	170	823	nvt 823		16.8	16.8	0.292	0.292	0.2	0.542	0.542	1.002	1.002

Project.....: 21490 - Brink16  
Onderdeel....: Kapconstructie/ vlieringvloer

**STABILITEIT**

Stf	b <sub>gem</sub> [mm]	h <sub>gem</sub> [mm]	l <sub>sys</sub> [mm]	l <sub>buc, y/z</sub> [mm]		$\lambda_y$	$\lambda_z$	$\lambda_{rel, y/z}$	$\beta_c$	k <sub>y</sub>	k <sub>z</sub>	k <sub>c, y</sub>	k <sub>c, z</sub>	
6	80	140	806	nvt	806	19.9	34.9	0.348	0.609	0.2	0.565	0.716	0.989	0.915
7	80	140	800	nvt	800	19.8	34.6	0.345	0.604	0.2	0.564	0.713	0.990	0.916
8	80	140	2642	nvt	2642	65.4	114.4	1.140	1.995	0.2	1.233	2.659	0.586	0.226
9	170	170	1856	nvt	1856	37.8	37.8	0.659	0.659	0.2	0.753	0.753	0.895	0.895
10	170	200	453	nvt	453	7.8	9.2	0.137	0.161	0.2	0.493	0.499	1.034	1.029
11	170	170	1293	nvt	1293	26.3	26.3	0.459	0.459	0.2	0.621	0.621	0.962	0.962
12	170	170	1556	nvt	1556	31.7	31.7	0.553	0.553	0.2	0.678	0.678	0.934	0.934
13	170	200	5400	nvt	5400	93.5	110.0	1.631	1.918	0.2	1.963	2.502	0.327	0.243
14	170	170	1556	nvt	1556	31.7	31.7	0.553	0.553	0.2	0.678	0.678	0.934	0.934
15	170	200	421	nvt	421	7.3	8.6	0.127	0.149	0.2	0.491	0.496	1.036	1.032
16	170	170	812	nvt	812	16.5	16.5	0.289	0.289	0.2	0.540	0.540	1.003	1.003
17	170	170	1072	nvt	1072	21.8	21.8	0.381	0.381	0.2	0.581	0.581	0.982	0.982
18	170	170	2700	nvt	2700	55.0	55.0	0.959	0.959	0.2	1.026	1.026	0.719	0.719
19	170	170	1881	nvt	1881	38.3	38.3	0.668	0.668	0.2	0.760	0.760	0.891	0.891
20	170	170	1088	nvt	1088	22.2	22.2	0.386	0.386	0.2	0.583	0.583	0.980	0.980
21	170	170	400	nvt	400	8.2	8.2	0.142	0.142	0.2	0.494	0.494	1.033	1.033

**STABILITEIT (vervolg)**

Staaf	positie [mm]	l <sub>ef, y</sub> [mm]	$\sigma_{my, crit}$ [N/mm <sup>2</sup> ]	$\lambda_{rel, my}$	k <sub>crit, y</sub>
1	638	1616	492.33	0.19	1.00
2	806	655	326.43	0.23	1.00
3	1346	2973	71.96	0.50	1.00
4	400	235	3385.53	0.07	1.00
5	822	738	1078.05	0.13	1.00
6	0	655	326.43	0.23	1.00
7	399	920	232.55	0.28	1.00
8	1320	2922	73.22	0.50	1.00
9	1856	1771	449.24	0.20	1.00
10	452	308	2197.79	0.09	1.00
11	0	1208	658.61	0.17	1.00
12	0	1315	604.84	0.17	1.00
13	0	5300	127.60	0.38	1.00
14	0	1740	457.14	0.20	1.00
15	0	321	2106.73	0.09	1.00
16	0	727	1094.36	0.13	1.00
17	0	880	904.30	0.14	1.00
18	0	2615	304.24	0.24	1.00
19	0	1796	442.98	0.20	1.00

Project.....: 21490 - Brink16  
 Onderdeel....: Kapconstructie/ vlieringvloer

**STABILITEIT (vervolg)**

Staafl	positie [mm]	$l_{ef,y}$ [mm]	$\sigma_{my,crit}$ [N/mm <sup>2</sup> ]	$\lambda_{rel,my}$	$k_{crit,y}$
20	0	1319	603.09	0.17	1.00
21	0	275	2893.09	0.08	1.00

**TOETSING SPANNINGEN**

Staafl	positie	BC / Sit.	$u_{bij}$	Toelaatbaar	$u_{fin,net}$	Toelaatbaar
1	1	BC / Sit.	16 / 5	UC frm(6.23)	0.12	0.12
2	2	BC / Sit.	25 / 2	UC frm(6.23)	0.26	0.26
3	3	BC / Sit.	6 / 5	UC frm(6.24)	0.43	0.43
4	4	BC / Sit.	6 / 1	UC frm(6.17)	0.38	0.38
5	5	BC / Sit.	27 / 2	UC frm(6.17)	0.19	0.19
6	6	BC / Sit.	6 / 1	UC frm(6.23)	0.20	0.20
7	7	BC / Sit.	6 / 5	UC frm(6.23)	0.30	0.30
8	8	BC / Sit.	6 / 5	UC frm(6.24)	0.42	0.42
9	9	BC / Sit.	6 / 1	UC frm(6.23)	0.41	0.41
10	10	BC / Sit.	5 / 2	UC frm(6.17)	0.80	0.80
11	11	BC / Sit.	5 / 3	UC frm(6.17)	0.14	0.14
12	12	BC / Sit.	5 / 3	UC frm(6.23)	0.16	0.16
13	13	BC / Sit.	5 / 3	UC frm(6.23)	0.89	0.89
14	14	BC / Sit.	5 / 3	UC frm(6.23)	0.17	0.17
15	15	BC / Sit.	5 / 1	UC frm(6.17)	0.79	0.79
16	16	BC / Sit.	6 / 1	UC frm(6.17)	0.22	0.22
17	17	BC / Sit.	6 / 1	UC frm(6.23)	0.23	0.23
18	18	BC / Sit.	6 / 1	UC frm(6.23)	0.37	0.37
19	19	BC / Sit.	6 / 2	UC frm(6.23)	0.37	0.37
20	20	BC / Sit.	6 / 2	UC frm(6.23)	0.20	0.20
21	21	BC / Sit.	27 / 1	UC frm(6.17)	0.33	0.33

**TOETSING DOORBUIGING**

Stf	Soort	Mtg	$l_{sys}$ [mm]	Overstek i j	BC Sit	$u_{bij}$ [mm]	Toelaatbaar [mm]	$u_{fin,net}$ [mm]	Toelaatbaar [mm]
1	Dak	ss	1276	Nee Nee	78 5	1.8	10.2 2*0.004	1.8	10.2 2*0.004
2	Dak	ss	806	Nee Nee	78 5	-3.0	-6.4 2*0.004	-3.0	-6.4 2*0.004
3	Dak	db	2693	Nee Nee	77 2	-2.1	-10.8 0.004	-2.2	-10.8 0.004
4	Vloer	ss	400	Nee Nee	77 1	-0.5	-2.4 2*0.003	-0.6	-3.2 2*0.004
5	Dak	ss	823	Nee Nee	77 2	-0.9	-6.6 2*0.004	-1.0	-6.6 2*0.004
6	Dak	ss	806	Nee Nee	78 4	-3.0	-6.4 2*0.004	-3.0	-6.4 2*0.004
7	Vloer	ss	800	Nee Nee	78 1	3.0	4.8 2*0.003	3.0	6.4 2*0.004
8	Dak	db	2642	Nee Nee	77 2	-1.7	-10.6 0.004	-1.9	-10.6 0.004
9	Dak	ss	1856	Nee Nee	77 2	-2.9	-14.8 2*0.004	-3.1	-14.8 2*0.004
10	Vloer	ss	453	Nee Nee	77 2	-0.8	-2.7 2*0.003	-0.9	-3.6 2*0.004
11	Dak	ss	1293	Nee Nee	78 5	-2.0	-10.3 2*0.004	-2.0	-10.3 2*0.004

Project.....: 21490 - Brink16  
 Onderdeel....: Kapconstructie/ vlieringvloer

**TOETSING DOORBUIGING**

Stf	Soort	Mtg	$l_{sys}$ [mm]	Overstek i j	BC Sit	$u_{bij}$ [mm]	Toelaatbaar [mm]	$u_{fin,net}$ [mm]	Toelaatbaar [mm]		
							*1		*1		
13	Vloer	db	5400	Nee Nee	77 1	-10.2	-16.2	0.003	-12.7	-21.6	0.004
15	Vloer	ss	421	Nee Nee	77 2	-0.7	-2.5	2*0.003	-0.8	-3.4	2*0.004
16	Dak	ss	812	Nee Nee	77 2	-0.9	-6.5	2*0.004	-1.0	-6.5	2*0.004
18	Vloer	db	2700	Nee Nee	77 2	-1.8	-8.1	0.003	-2.2	-10.8	0.004
19	Dak	ss	1881	Nee Nee	77 2	-2.7	-15.0	2*0.004	-2.9	-15.0	2*0.004
21	Vloer	ss	400	Nee Nee	77 1	-0.5	-2.4	2*0.003	-0.6	-3.2	2*0.004

**TOETSING DOORBUIGING (vervolg)**

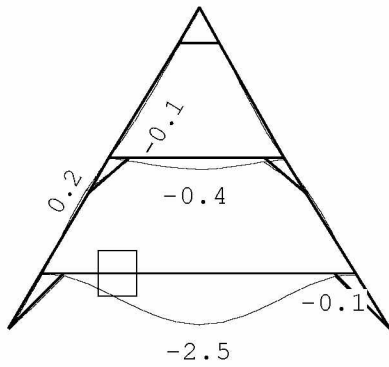
Stf	Soort	Mtg	$l_{sys}$ [mm]	Overstek i j	Zeeg [mm]	BC Sit	$u_{inst}$ [mm]	Toelaatbaar [mm]	
								*1	
1	Dak	ss	1276	Nee Nee	0.0	64 2	-1.8	-10.2	2*0.004
2	Dak	ss	806	Nee Nee	0.0	63 5	-3.0	-6.4	2*0.004
3	Dak	db	2693	Nee Nee	0.0	62 2	-2.1	-10.8	0.004
4	Vloer	ss	400	Nee Nee	0.0	53 1	-0.5	-3.2	2*0.004
5	Dak	ss	823	Nee Nee	0.0	53 2	-0.8	-6.6	2*0.004
6	Dak	ss	806	Nee Nee	0.0	63 3	-3.0	-6.4	2*0.004
7	Vloer	ss	800	Nee Nee	0.0	63 3	-3.0	-6.4	2*0.004
8	Dak	db	2642	Nee Nee	0.0	54 2	-1.7	-10.6	0.004
9	Dak	ss	1856	Nee Nee	0.0	54 2	-2.8	-14.8	2*0.004
10	Vloer	ss	453	Nee Nee	0.0	64 2	-0.8	-3.6	2*0.004
11	Dak	ss	1293	Nee Nee	0.0	54 5	-2.0	-10.3	2*0.004
13	Vloer	db	5400	Nee Nee	0.0	53 3	-9.9	-21.6	0.004
15	Vloer	ss	421	Nee Nee	0.0	54 2	-0.6	-3.4	2*0.004
16	Dak	ss	812	Nee Nee	0.0	53 6	-0.8	-6.5	2*0.004
18	Vloer	ss	2700	Nee Nee	0.0	56 1	-4.1	-21.6	2*0.004
19	Dak	ss	1881	Nee Nee	0.0	64 2	-2.7	-15.0	2*0.004
21	Vloer	ss	400	Nee Nee	0.0	53 1	-0.5	-3.2	2*0.004



Project.....: 21490 - Brink16  
 Onderdeel....: Kapconstructie/ vlieringvloer

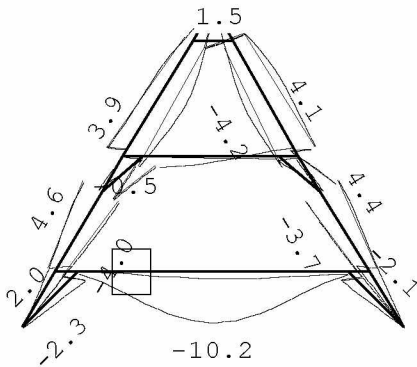
**VERVORMINGEN w1**

Blijvende combinatie



**VERVORMINGEN w<sub>bij</sub>**

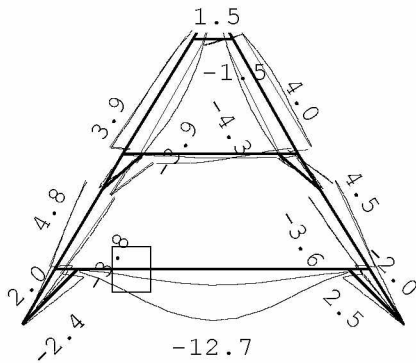
Karakteristieke combinatie



Project.....: 21490 - Brink16  
 Onderdeel....: Kapconstructie/ vlieringvloer

**VERVORMINGEN Wmax**

Karakteristieke combinatie



**DOORBUIGINGEN**

Karakteristieke combinatie

Nr.	staven	Zijde	positie	$l_{rep}$	$w_1$	$w_2$	-- $w_{bij}$ --		$w_{tot}$	$w_c$	-- $w_{max}$ --	
			[m]	[mm]	[mm]	[mm]	[mm]	[lrep/]	[mm]	[mm]	[mm]	[lrep/]
1	1	Neg.	/	2552	-0.0	-0.0	-1.8	1421	-1.8	-1.8	1416	
1	1	Pos.	/	2552	-0.0	0.0	1.7	1477	1.7	1.7	1482	
2	9	Neg.	/	3713	0.2	0.1	-2.2	1672	-2.0	-2.0	1871	
2	9	Pos.	/	3713	0.2	0.3	2.9	1290	3.1	3.1	1192	
3	16	Neg.	/	1624	-0.2	-0.2	-0.9	1892	-1.0	-1.0	1568	
4	3	Neg.	1.346	2693	-0.1	-0.1	-2.1	1305	-2.2	-2.2	1237	
4	3	Pos.	/	5385	-0.0	-0.1	1.1	4831	1.1	1.1	5035	
5	6	Neg.	/	1612	-0.0	-0.0	-2.4	674	-2.4	-2.4	669	
5	6	Pos.	/	1612	-0.0	-0.0	3.0	543	3.0	3.0	546	
6	2	Neg.	/	1612	-0.0	-0.0	-2.4	667	-2.4	-2.4	662	
6	2	Pos.	/	1612	-0.0	-0.0	3.0	543	3.0	3.0	546	
7	8	Neg.	1.321	2642	-0.1	-0.1	-1.7	1519	-1.9	-1.9	1421	
7	8	Pos.	1.219	2642	-0.1	-0.1	1.3	1983	1.2	1.2	2164	
8	5	Pos.	/	1646	0.2	0.2	0.9	1893	1.0	1.0	1571	
9	19	Neg.	/	3761	-0.1	-0.2	-2.7	1387	-2.9	-2.9	1315	
9	19	Pos.	/	3761	-0.1	-0.1	1.8	2106	1.6	1.6	2297	
10	11	Neg.	/	2586	0.0	0.0	-1.8	1444	-1.7	-1.7	1484	
10	11	Pos.	/	2586	0.0	0.1	2.0	1311	2.0	2.0	1280	
11	4	Neg.	/	800	-0.1	-0.1	-0.5	1530	-0.6	-0.6	1259	
12	18	Neg.	1.350	2700	-0.4	-0.5	-0.5	5706	-0.9	-0.9	3035	
12	18	Pos.	/	5400	-0.1	-0.1	4.1	1320	4.0	4.0	1341	
13	21	Pos.	/	800	0.1	0.1	0.5	1546	0.6	0.6	1273	

Project.....: 21490 - Brink16  
 Onderdeel....: Kapconstructie/ vlieringvloer

### DOORBUIGINGEN

Karakteristieke combinatie

Nr.	staven	Zijde	positie [m]	$l_{rep}$ [mm]	$w_1$ [mm]	$w_2$ [mm]	-- $w_{bij}$ --  [mm] [lrep/]	$w_{tot}$ [mm]	$w_c$ [mm]	-- $w_{max}$ --  [mm] [lrep/]
14	7	Neg.	0.400	800		-0.0	-0.1 7044	-0.1		-0.1 6959
14	7	Pos.	/	1600	-0.0	-0.0	3.0 541	2.9		2.9 544
15	10	Neg.	/	906	-0.1	-0.1	-0.8 1172	-0.9		-0.9 1057
15	10	Pos.	/	906	-0.1	-0.0	0.5 1888	0.4		0.4 2291
16	13	Neg.	2.700	5400	-2.5	-2.8	-10.2 530	-12.7		-12.7 426
17	15	Neg.	/	841	0.1	0.1	-0.5 1747	-0.4		-0.4 2199
17	15	Pos.	/	841	0.1	0.1	0.7 1273	0.8		0.8 1107
18	12	Neg.	/	3111	-0.1	-0.1	-2.3 1350	-2.4		-2.4 1313
18	12	Pos.	/	3111	-0.1	-0.0	2.0 1542	2.0		2.0 1595
19	14	Neg.	/	3111	0.1	0.1	-2.1 1503	-2.0		-2.0 1593
19	14	Pos.	/	3111	0.1	0.1	2.4 1297	2.5		2.5 1237
20	17	Neg.	/	2144	-0.3	-0.3	-1.2 1772	-1.5		-1.5 1465
20	17	Pos.	0.536	1072	0.0	0.0	0.1 11353	0.1		0.1 9271
21	20	Neg.	0.544	1088	-0.0	-0.0	-0.1 10645	-0.1		-0.1 8975
21	20	Pos.	/	2175	0.3	0.3	1.2 1779	1.5		1.5 1473

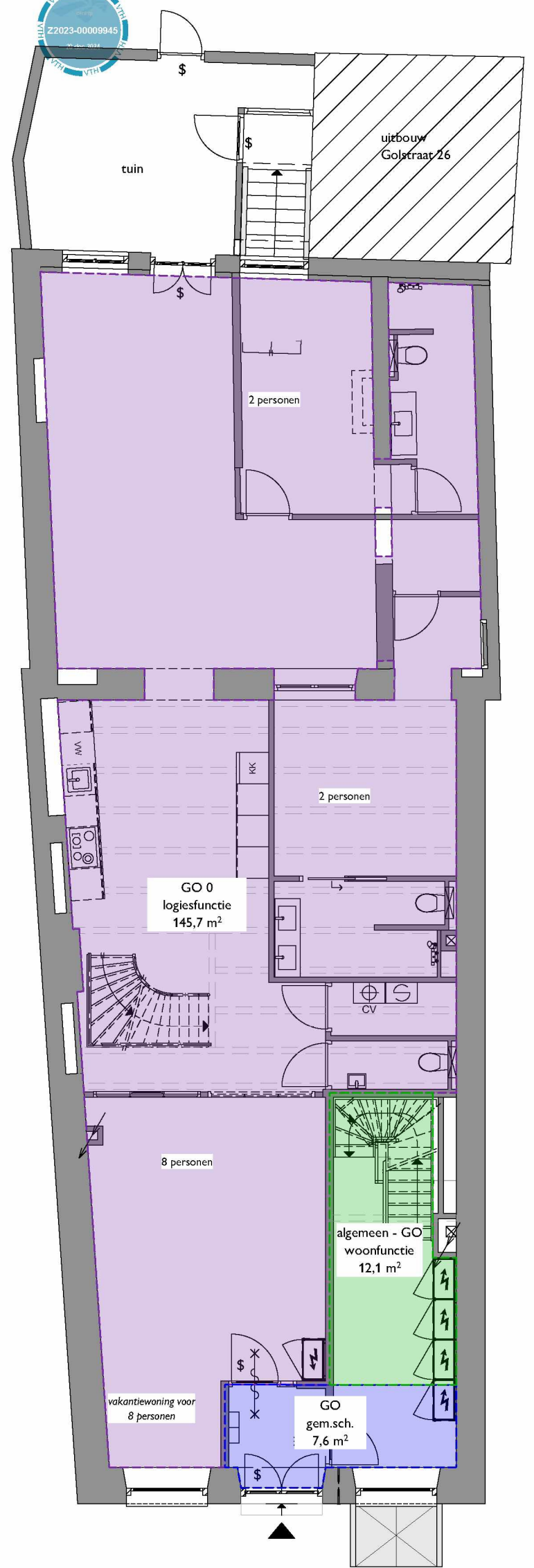
### TOTALE HORIZONTALE VERPLAATSING

Karakteristieke combinatie

knoop	Zijde	h [mm]	$u_1$ [mm]	$u_2$ [mm]	$u_3$ [mm]	-- $u_{tot}$ --  [mm] [h/]
12	Neg.	2700	-0.2	-0.2	-3.8	-4.2 639
14	Pos.	2700	0.1	0.1	3.7	3.9 698



kelder



begane grond



ARCHITECTEN

Bergpoortstraat 59 | 7411CL | Deventer  
@im-architecten.nl | im-architecten.nl | 0570613291

datum  
08-07-2024

schaal  
1:100

formaat  
A3

tekenaar

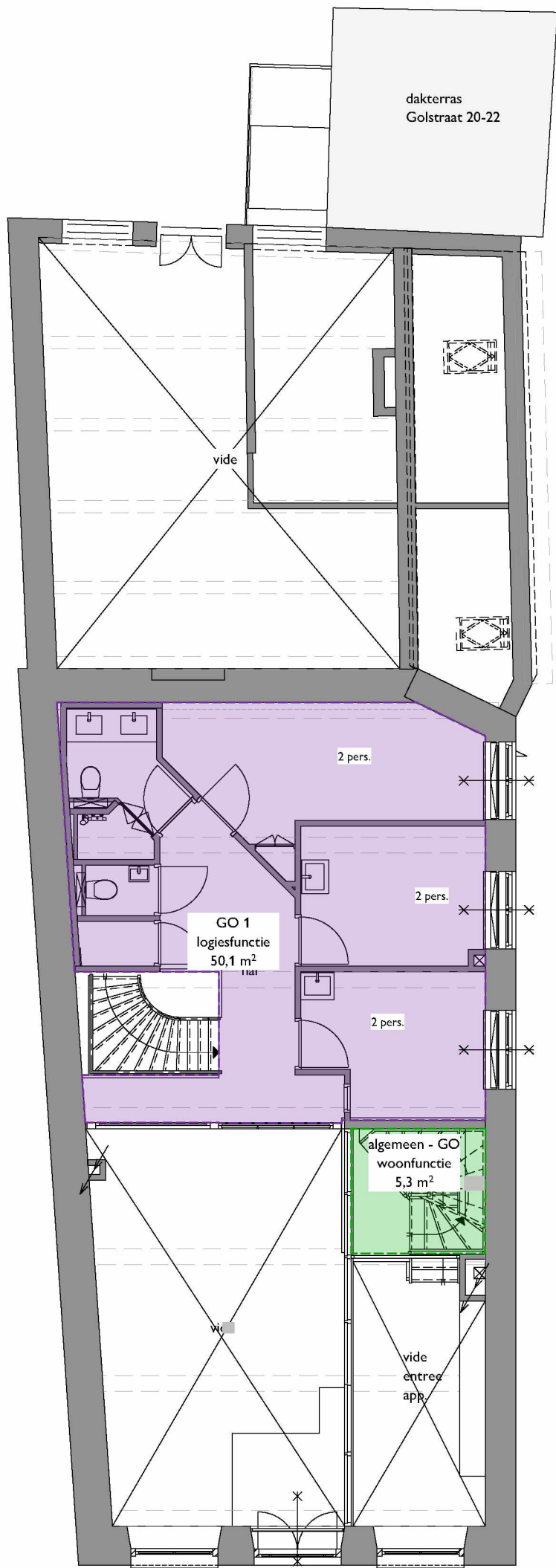
gebruiksopp./-functies begane gr. + kelder

project  
Brink 16 Deventer

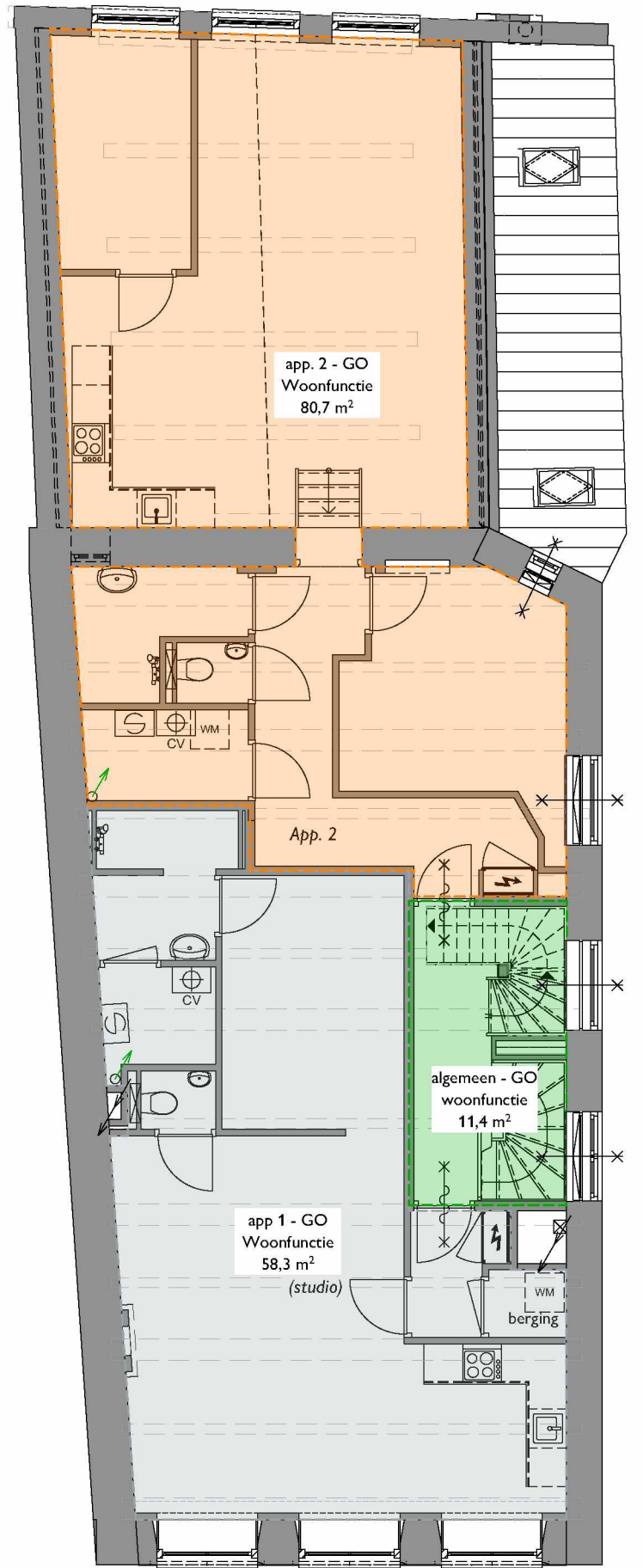
opdrachtgever

proj. 1053

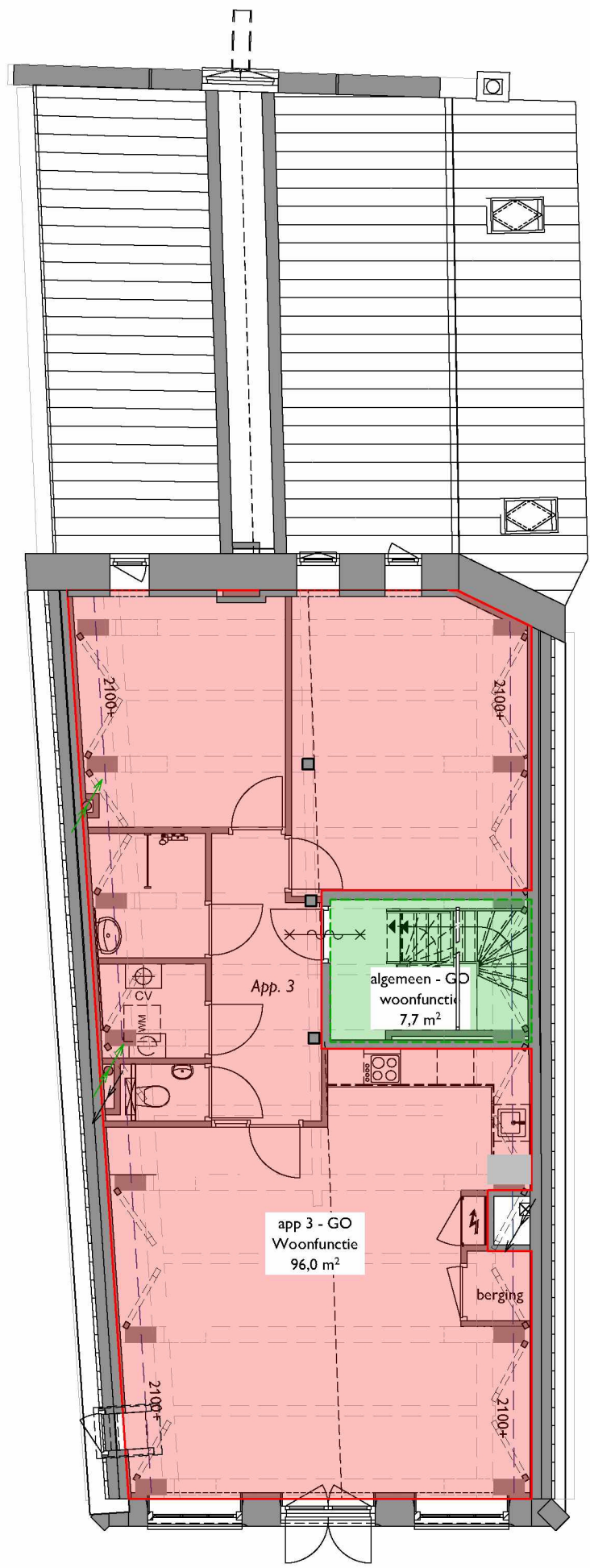
blad nr. GO-1



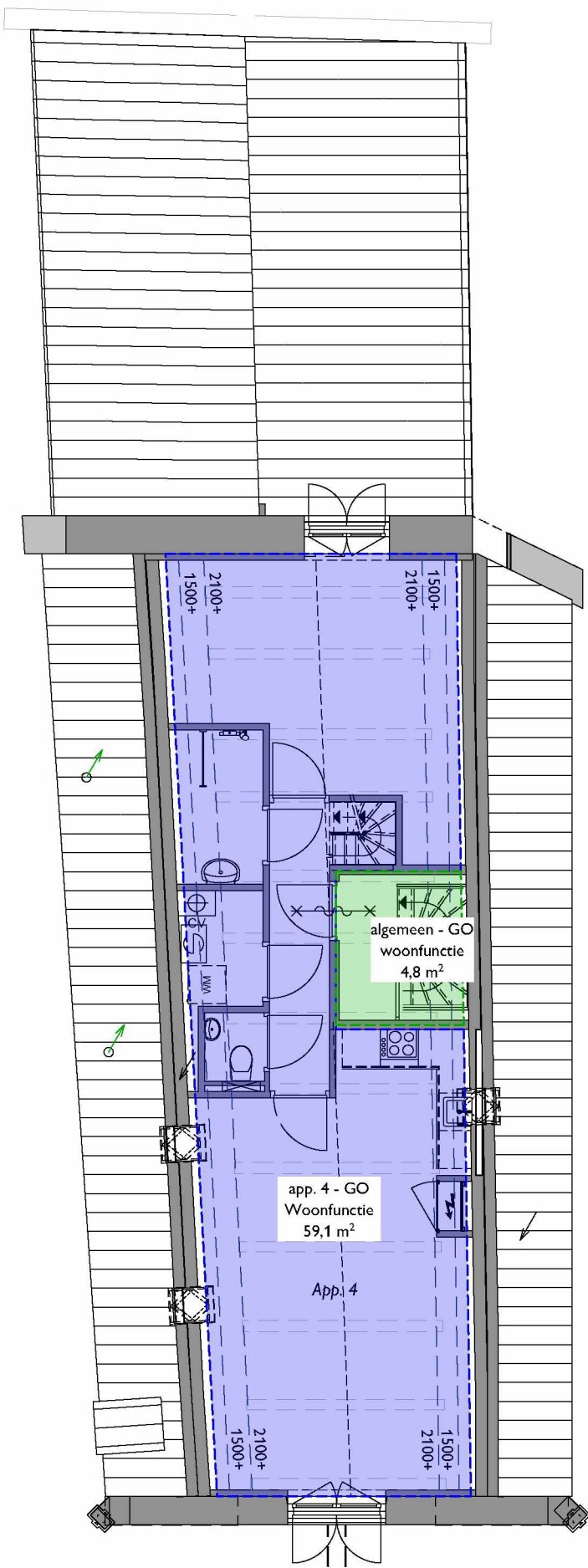
entresol



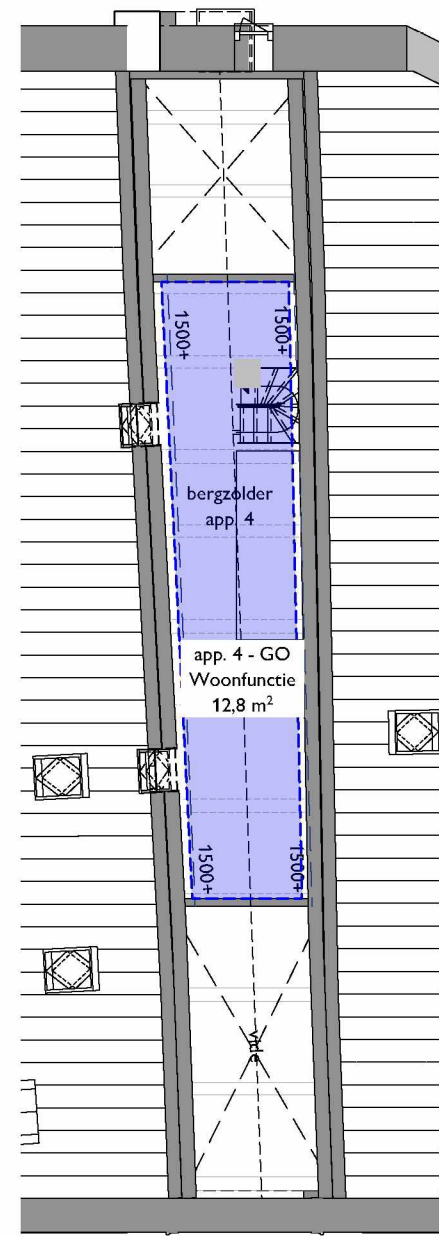
1e verdieping



2e verdieping



zolder



vliering



ARCHITECTEN

Bergpoortstraat 59 | 7411CL | Deventer  
@im-architecten.nl | im-architecten.nl | 0570613291

datum  
08-07-2024

schaal  
1:100

formaat  
A3

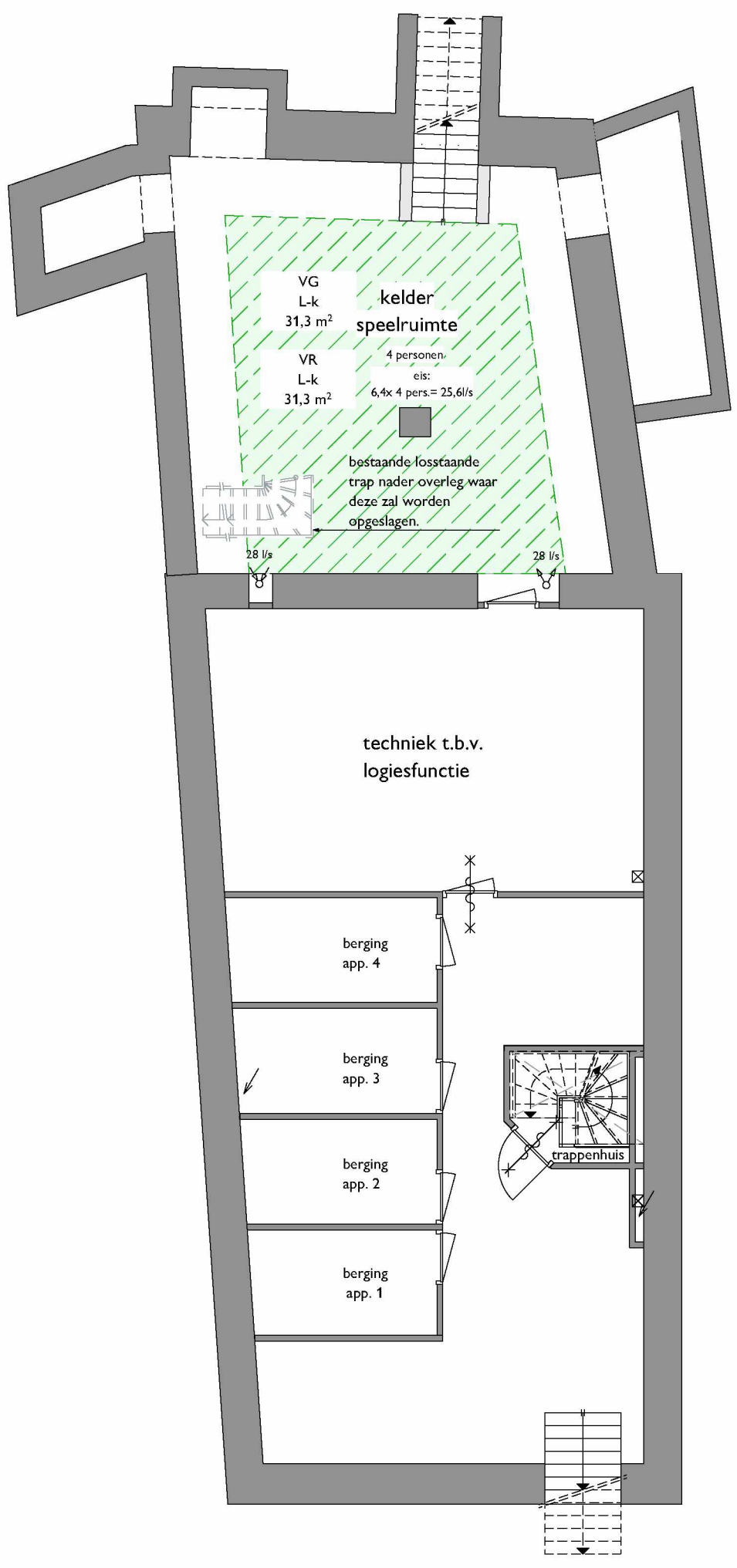
tekenaar

gebruiksopp./-functies 2e verd + zolder + vliering

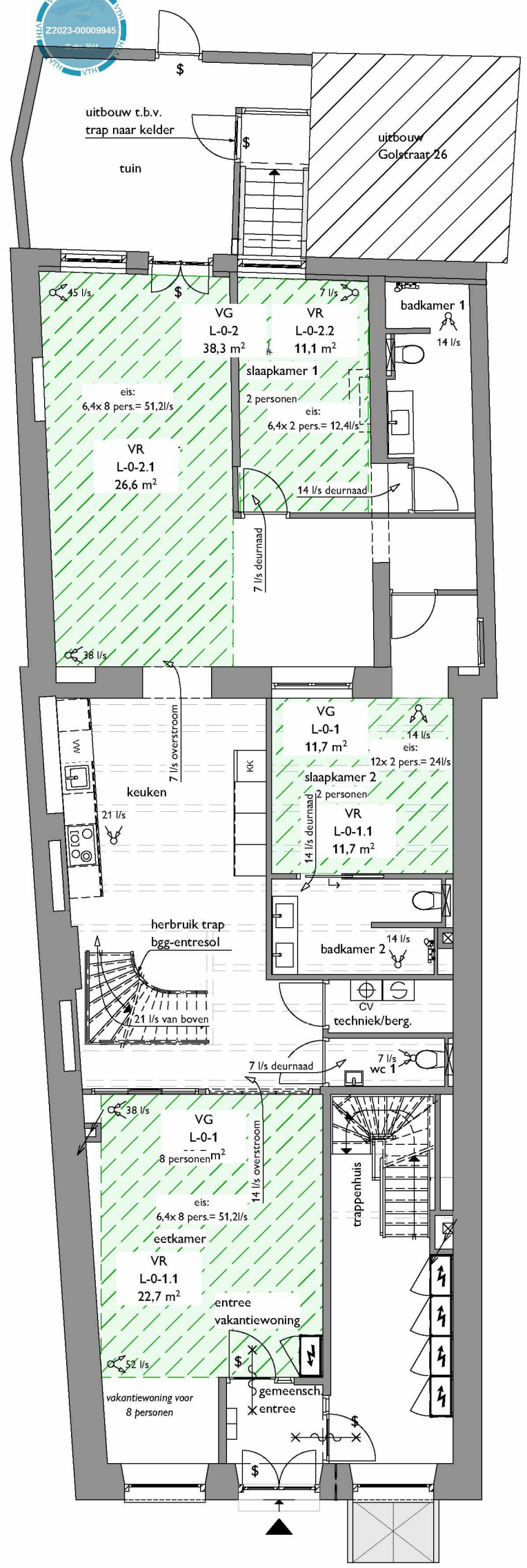
project  
Brink 16 Deventer

opdrachtgever

proj. 1053 blad nr. GO-3

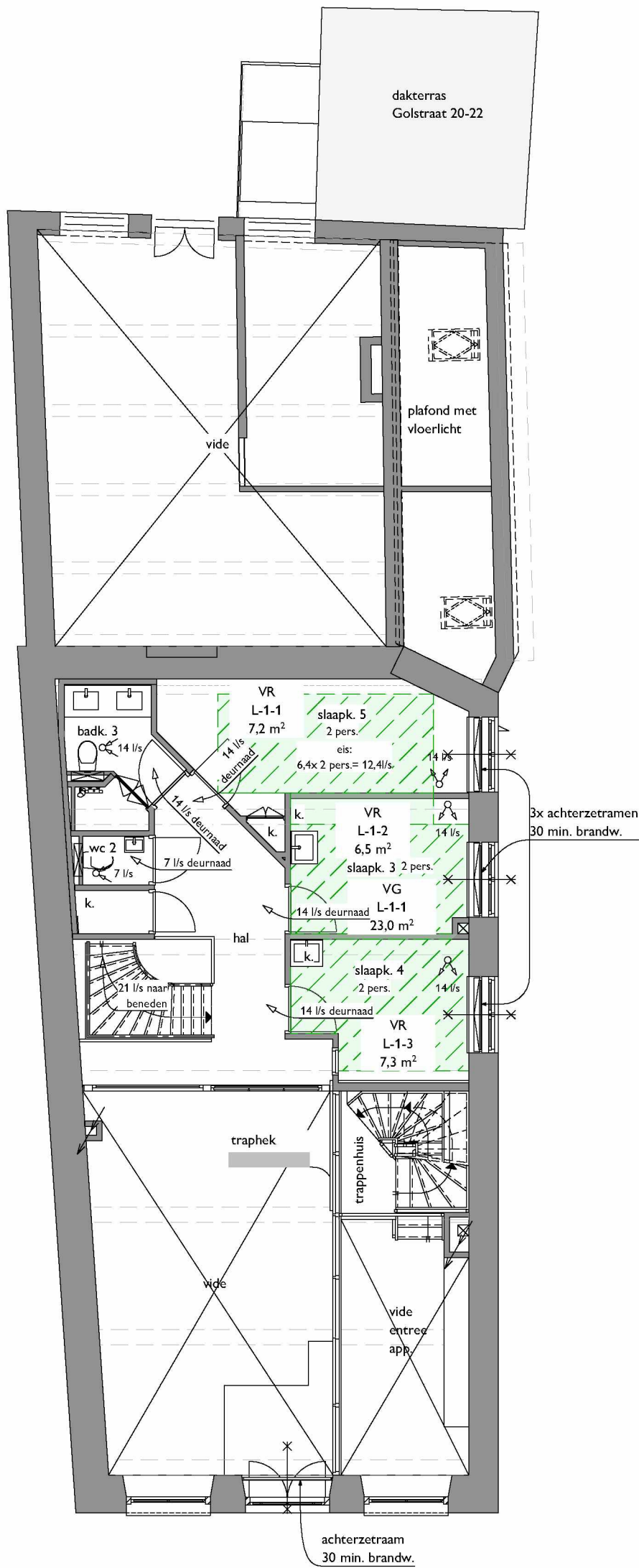


kelder

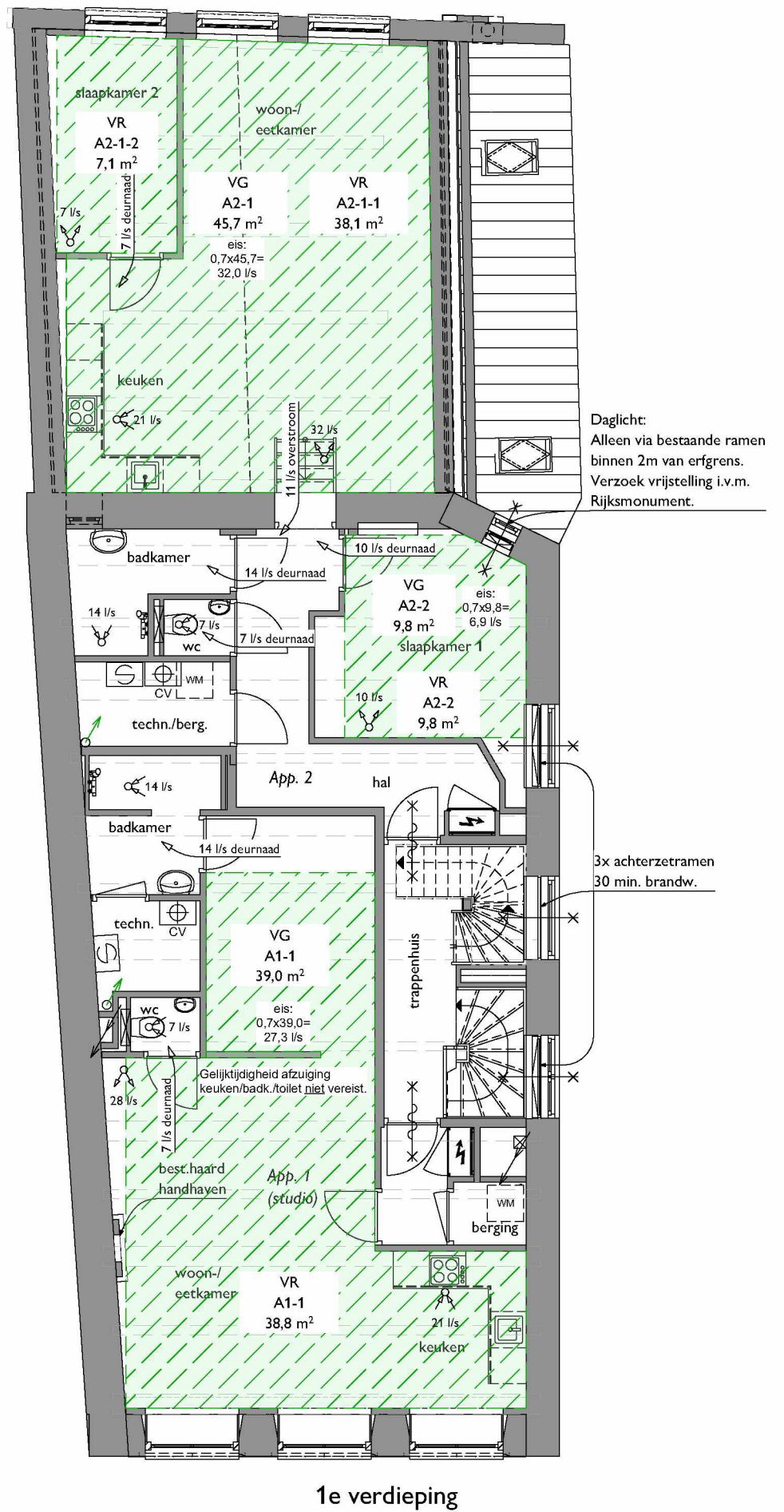


begane grond

Voor ventilatie rechtens verkregen niveau.  
Mechanische toe- en afvoer  
MV-box in techniekruimte



entresol



1e verdieping







































































































































































































































