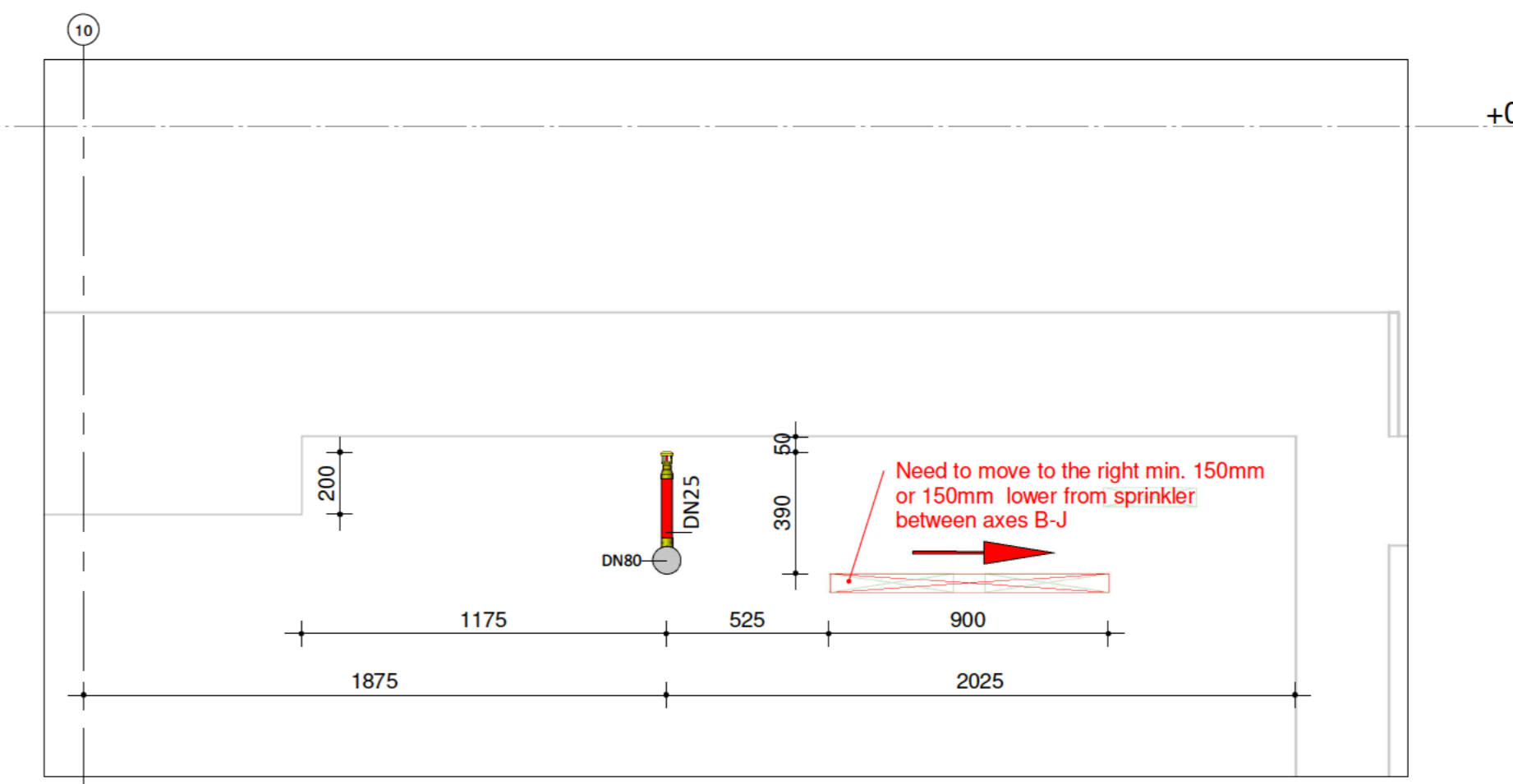
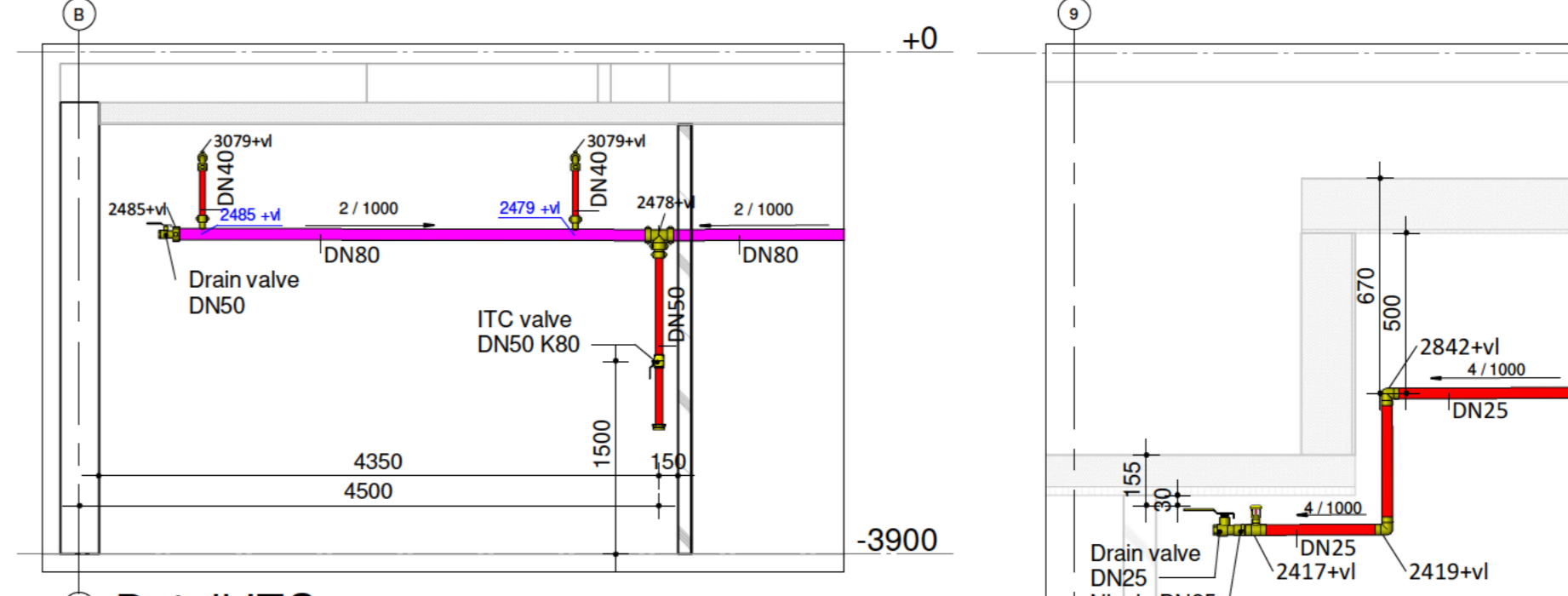


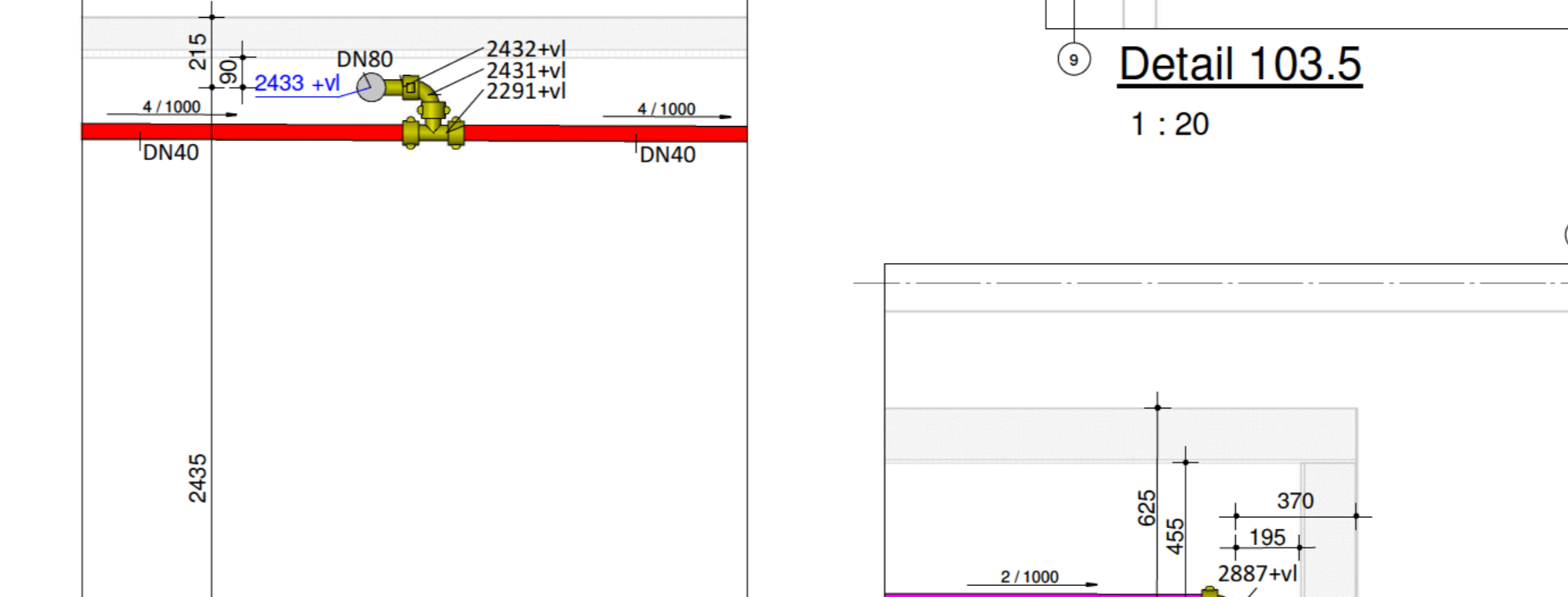
Standard detail for the levels of pipes



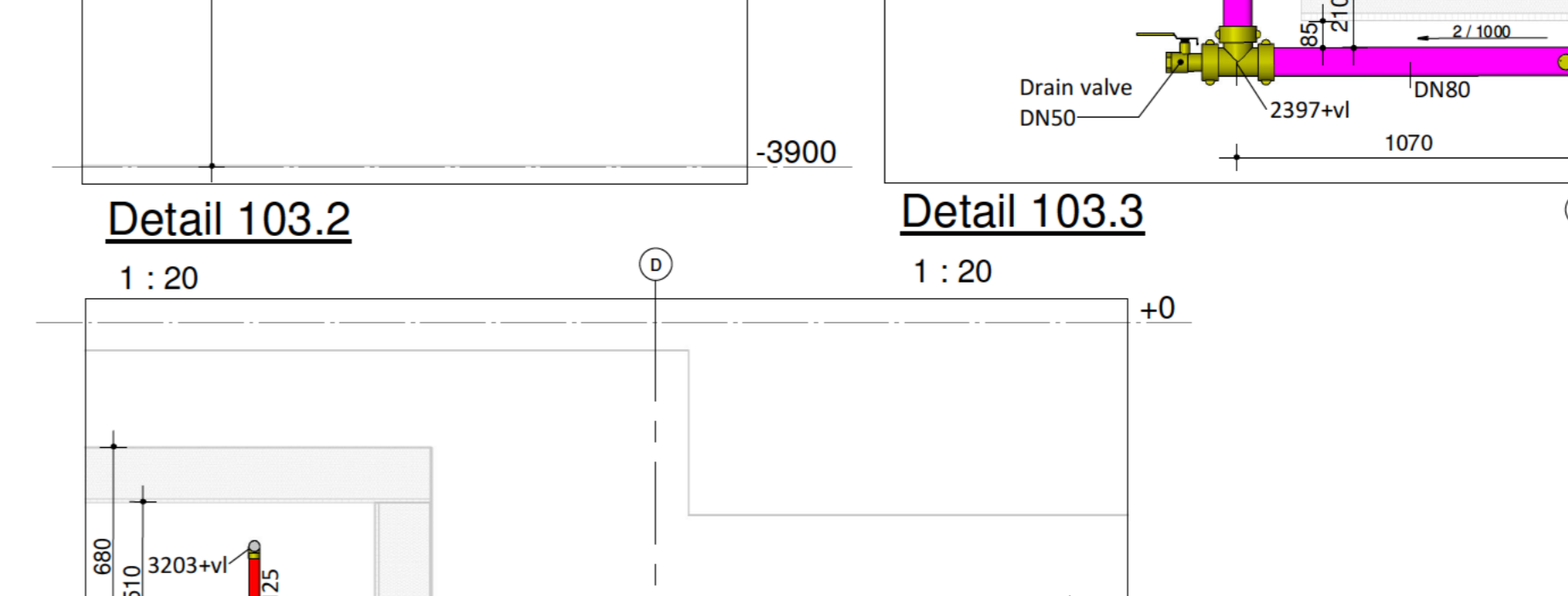
Detail 103.1



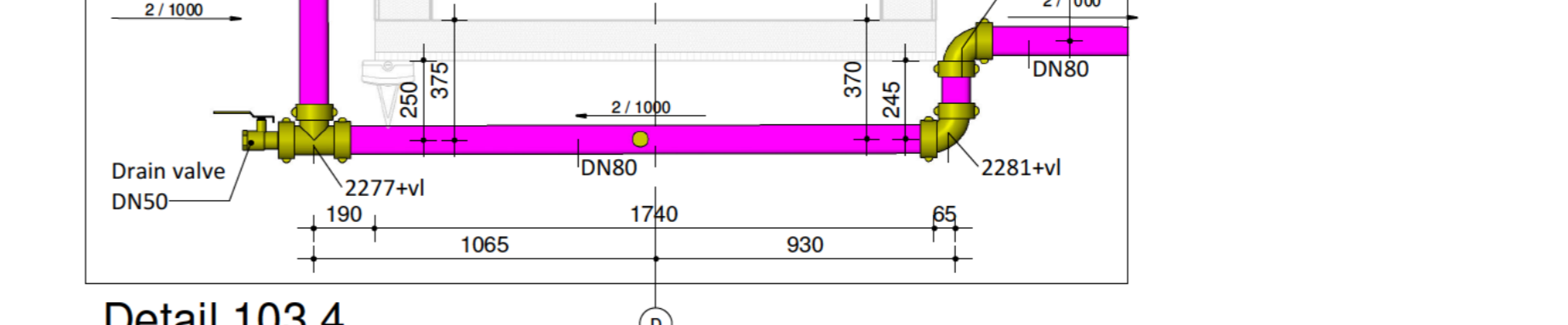
Detail 103.2



Detail 103.3



Detail 103.4



Detail 103.5

General pipe specifications

Pipe specification	Piping class	Pipe weight (kg/m)	Volume (Lm)
1" 25 38.7 3.2	DN64W	2.44	3.02
1 1/2" 38 42.4 3.2	DN75	3.14	4.15
2" 50 60.3 3.2	DN100	3.81	4.88
2 1/2" 65 76.1 3.8	DN125	5.24	6.82
3" 80 89.2 3.6	DN150	6.15	7.97
4" 100 114.3 3.2	DN200	8.77	11.37
5" 125 136.7 3.6	DN250	12.08	15.67
6" 150 168.3 4.0	DN300	16.21	21.06
8" 200 219.1 4.5	DN400	23.87	31.02
10" 250 273 5.0	DN500	33.86	44.03

LEGENDA

- Alarmvalve
- 150 C/L of pipework under (concrete) ceiling
- +3000 C/L of pipework above finished floor level
- Description of pipe (diameter/length)
- Rise or drop on sprinkler pipework
- Flexible hose
- Riser nipple (diameter x length)
- Drop nipple (diameter x length)
- Hanger location on sprinkler pipework
- Groove/lock joint location on sprinkler main
- Doorspoelafsluiter

Finishing piping

- Galvanized
- Red Primer / Menie
- Coated - color: RAL 3000
- According to specifications in tender document

Hydraulic design specification

Building	Classification	Storage config.	Max storage height (m)	Density (kg/m³)	Remote area (m²)	Type
AK1-AK6	OH-II	-	5.0	180	180	DRY
POMPKAMER	OH-III	-	5.0	216	216	WET
TECHNISCHE RUMTEN	OH-III	-	5.0	<50	<50	DRY

Type	Temp. °C	Disad.	K-Fact.	Resp.	Fabrikant	Model	Uitvoering	Shvr.	Aantal	Opmeking
Upright	68 °C	15	80	Standard	TYCO	TY-B	Brass	TY3151	420	

