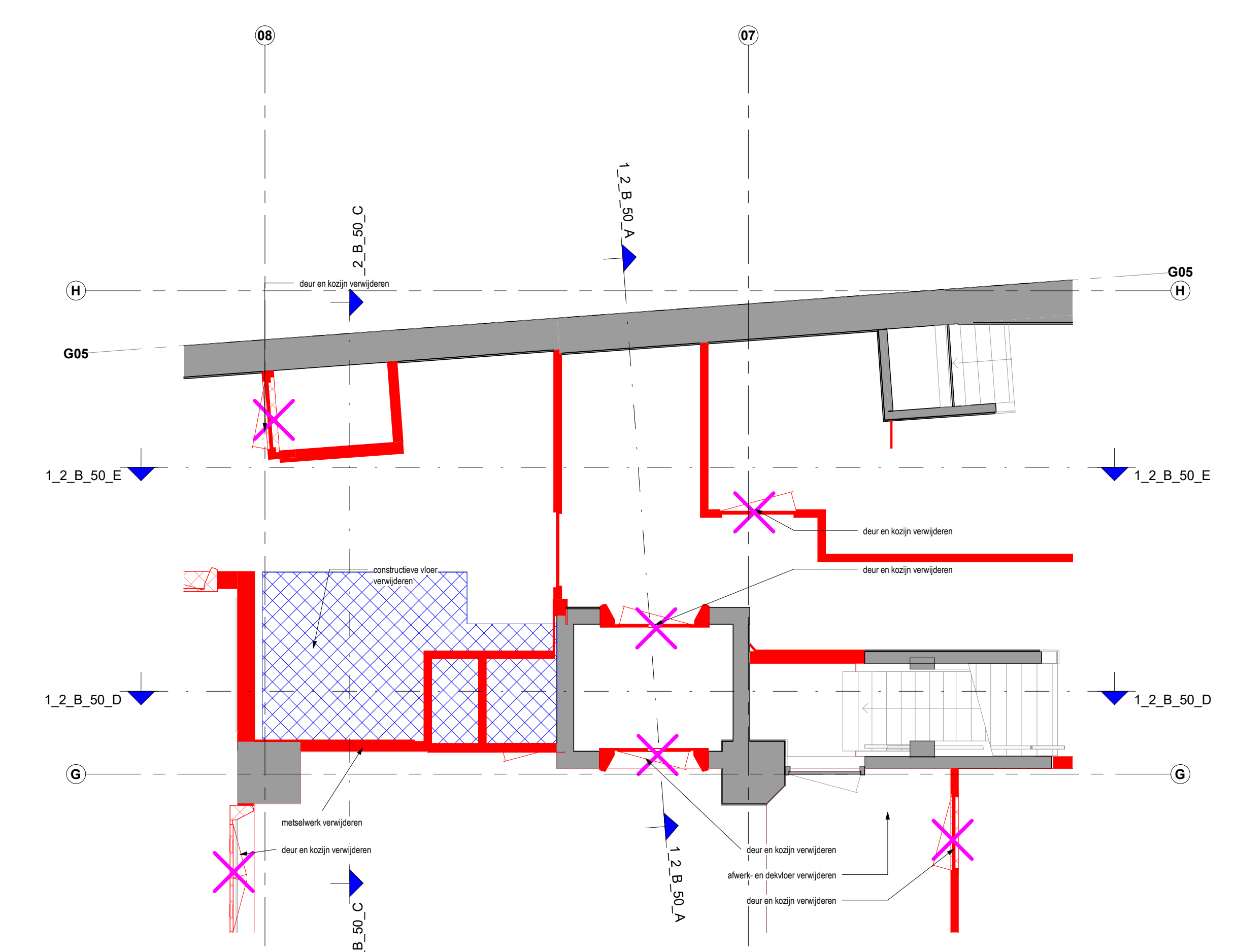
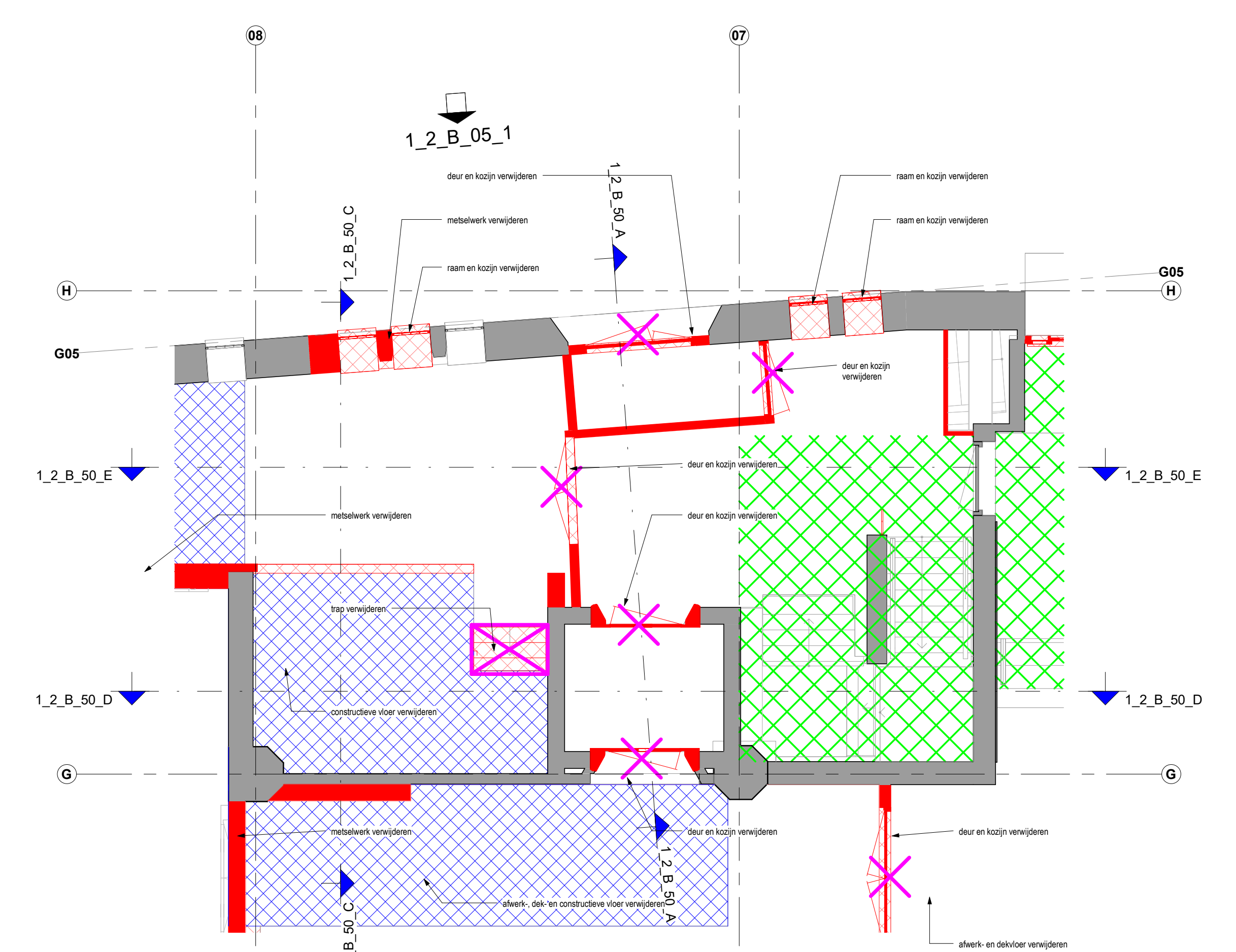


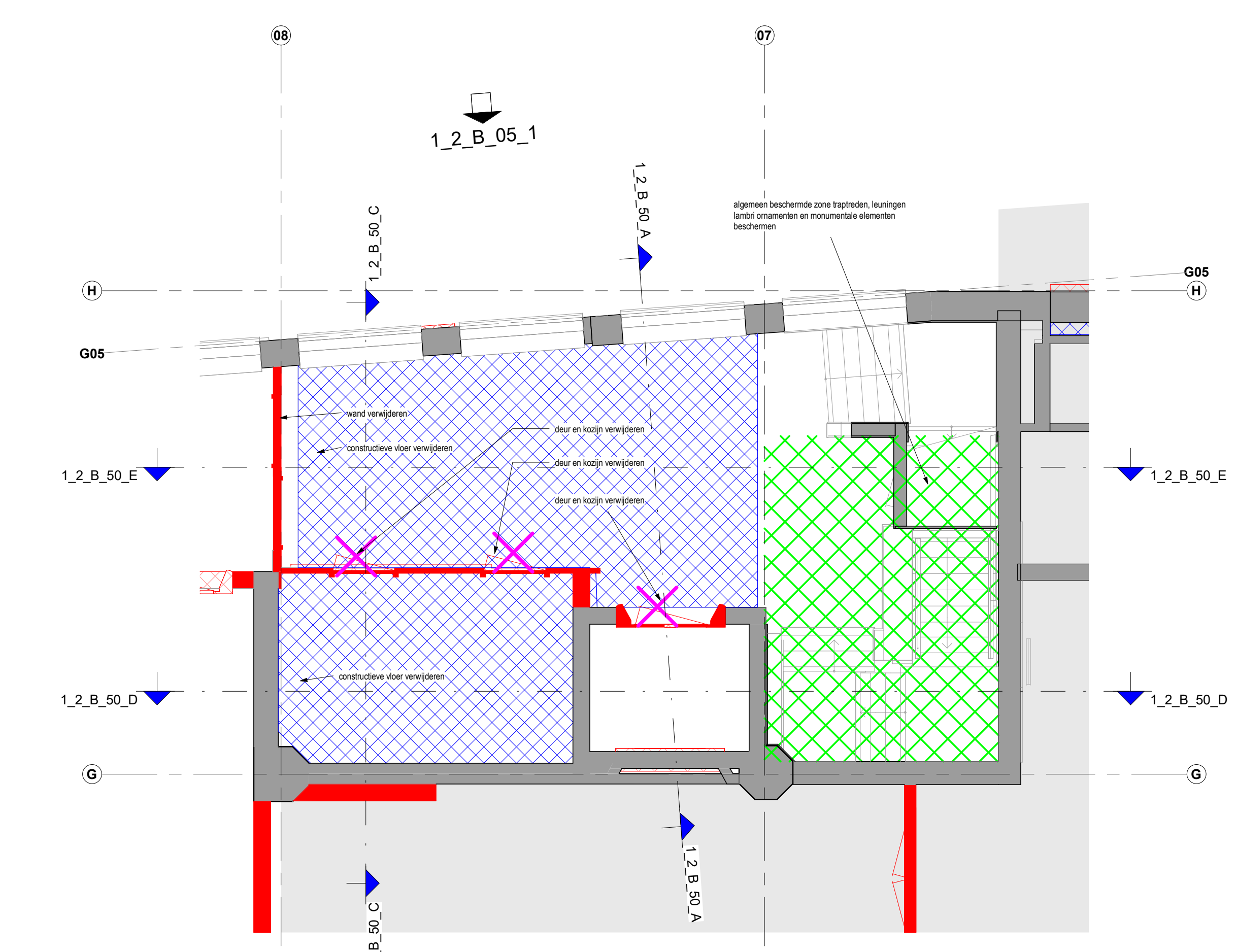
-2 kelder  
1\_2\_B\_05\_-2



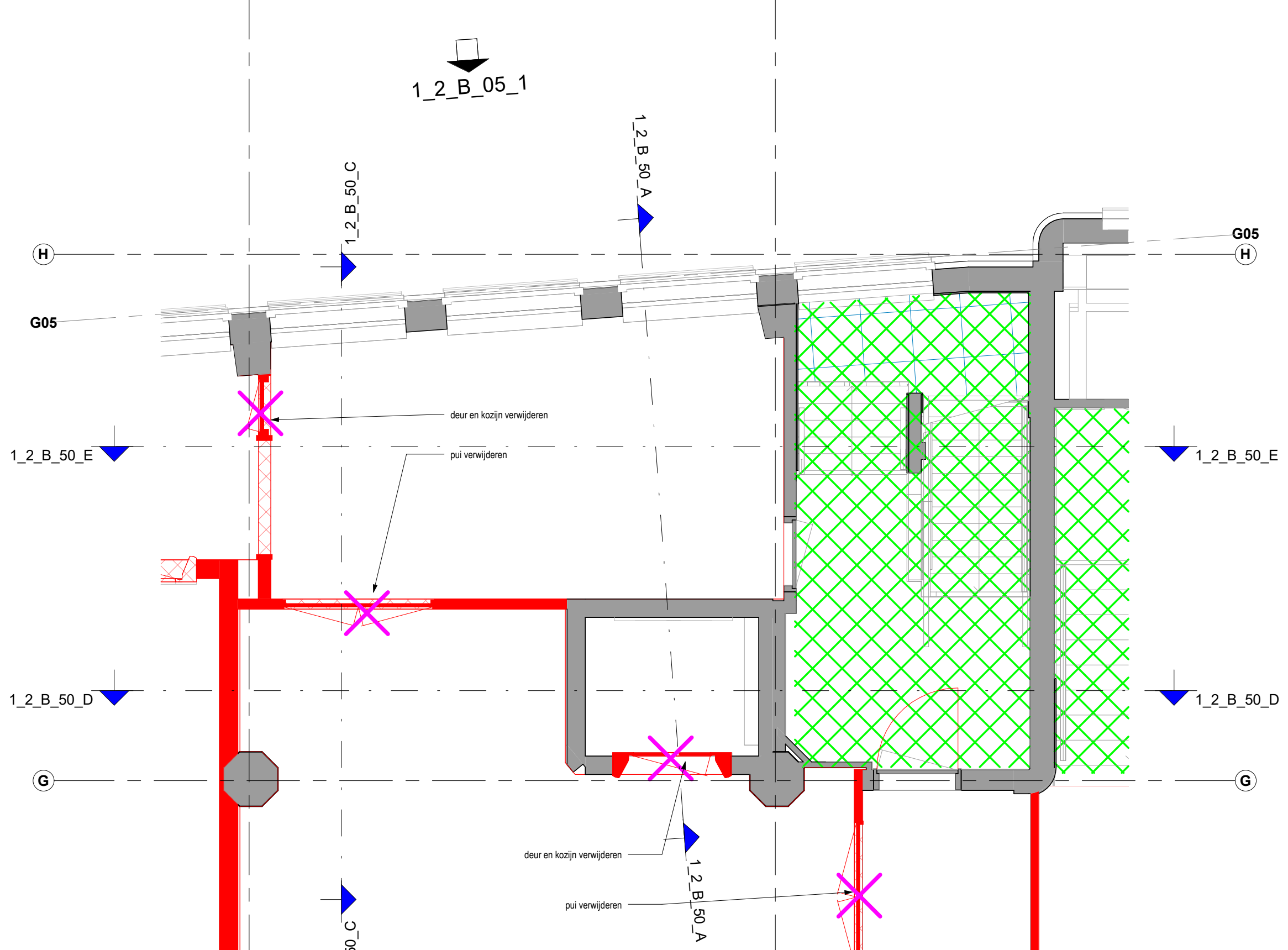
-1 kelder  
1\_2\_B\_05\_-1



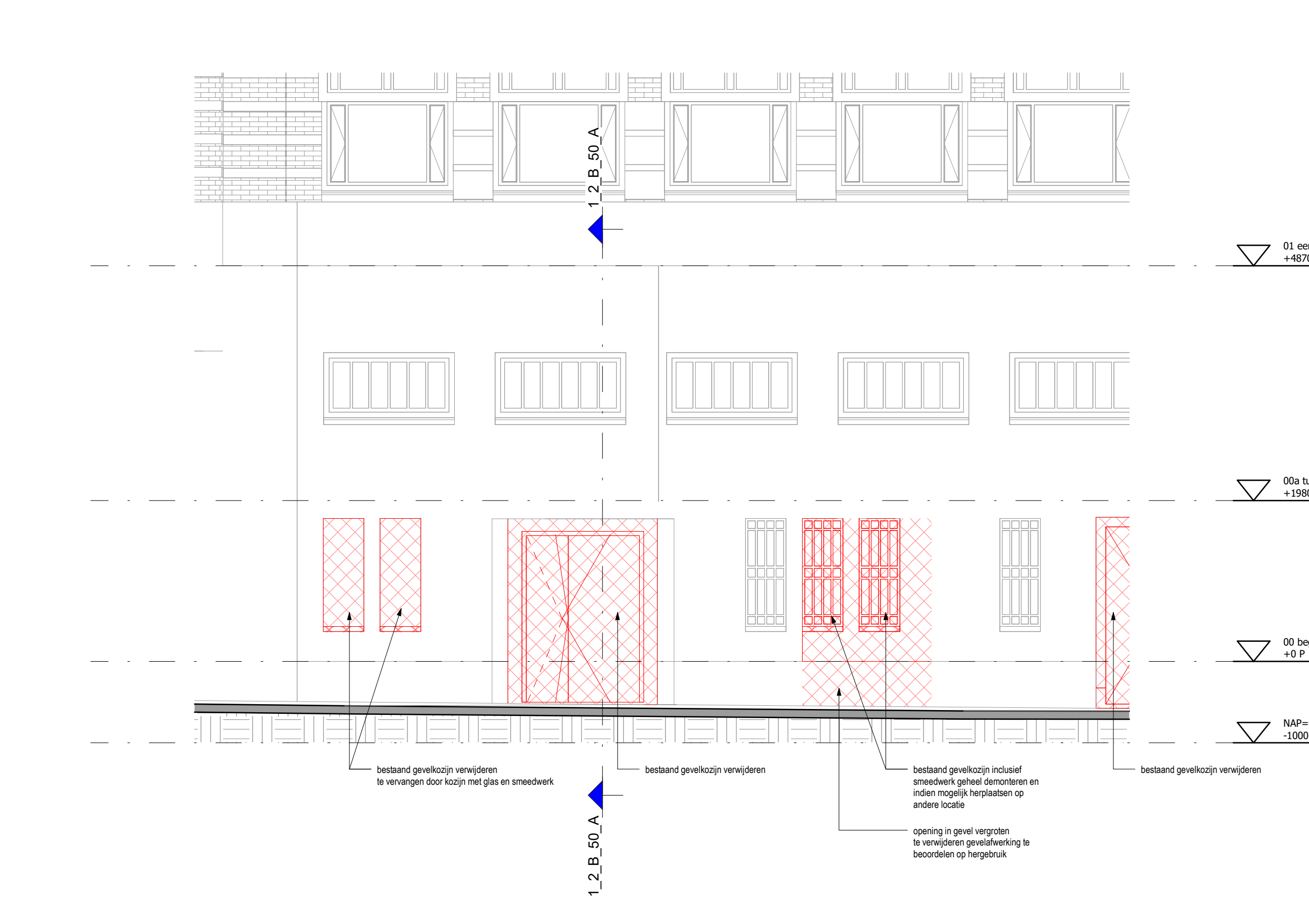
00 begane grond  
1\_2\_B\_05\_00



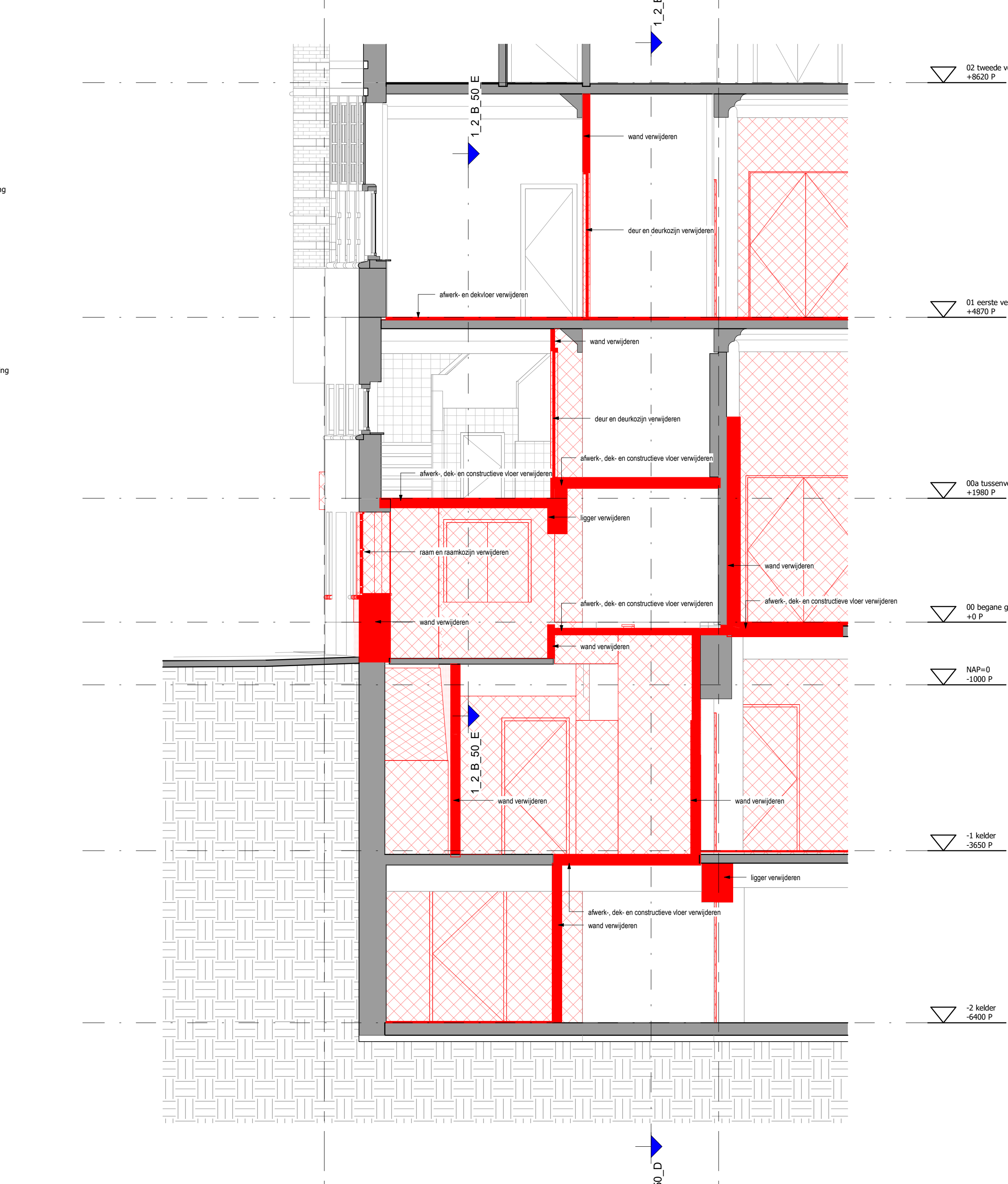
00a tussenverdieping  
1\_2\_B\_05\_00a



01 eerste verdieping  
1\_2\_B\_05\_01



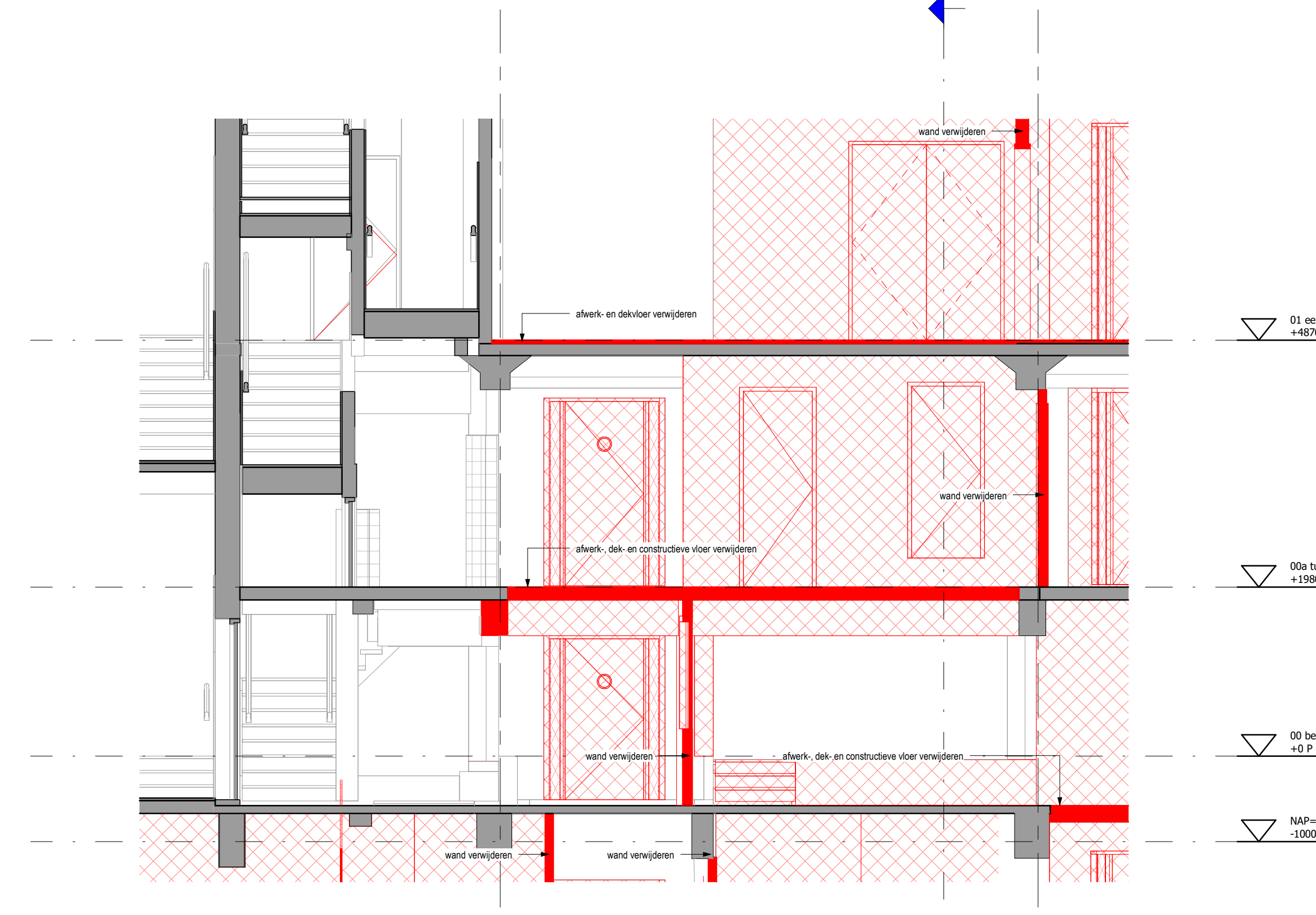
02 gevels fragment  
1\_2\_B\_05\_1



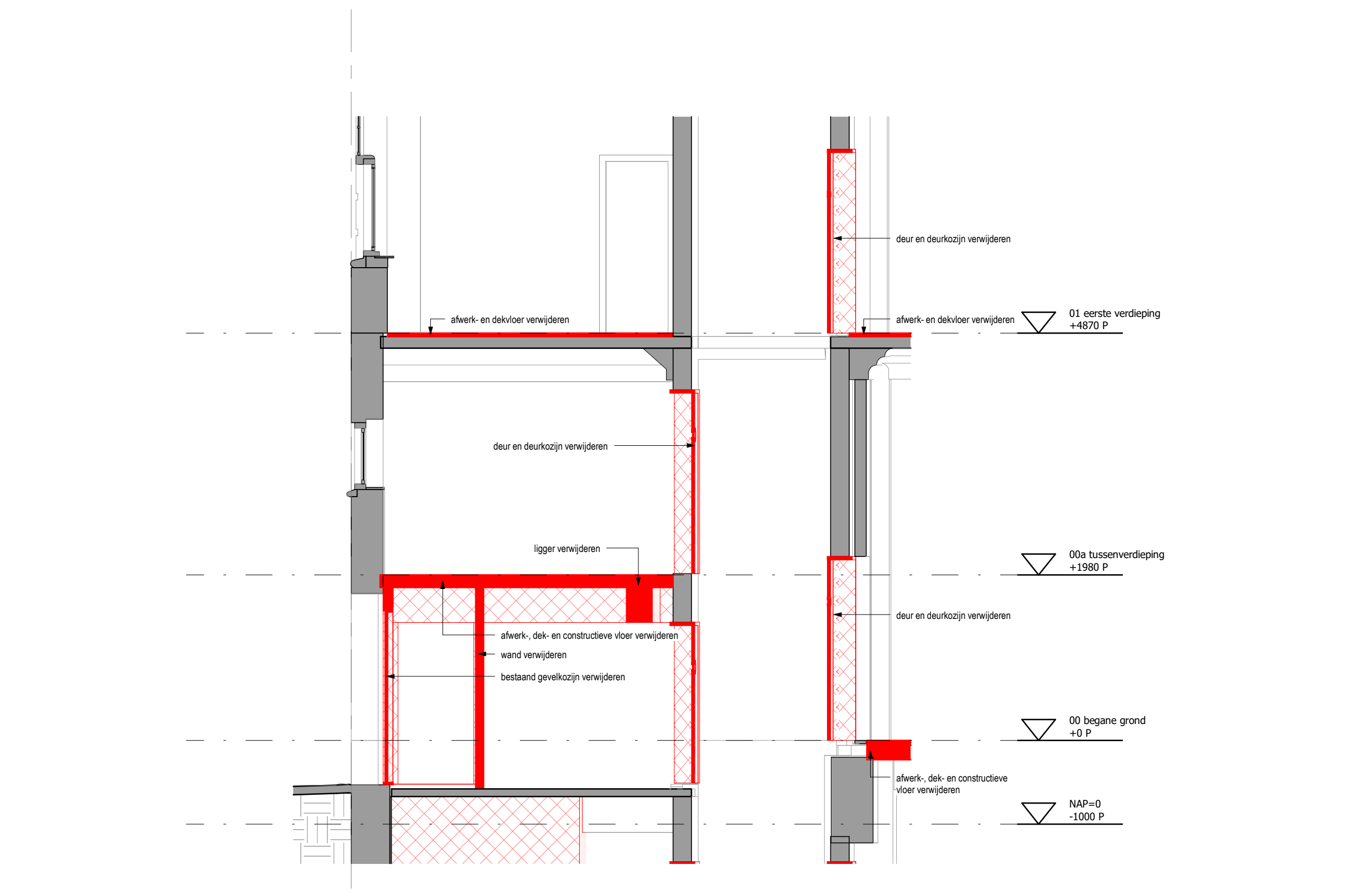
03 doorsneden\_fragment  
1\_2\_B\_50\_C



03 doorsneden\_fragment  
1\_2\_B\_50\_D



03 doorsneden\_fragment  
1\_2\_B\_50\_E



03 doorsneden\_fragment  
1\_2\_B\_50\_A

Overzichten slooptekening en belichting zie tekening B-S1

- Bestand
- Sloop
- Sloop aanzicht algemeen
- Sloop constructieve vloer
- Sloop afwerk- en dekvloer

**MVSA**

MVSA B.V.  
P.O. Box 2127  
1020 CA Amsterdam  
T 20 Nutschroeven  
tel. +31 20 5191800  
office@mvsa.nl  
www.mvsa.nl

project  
La Mappan  
Ged. Theehuis 10

ontwerper  
A2 Twee B.V.

ontwerper  
05 Ingenieurs

ontwerper  
entree woon

type  
BA

datum  
22-08-2023

schaal  
1:50

status  
BPM  
definitief

project  
22357

formaat  
A0

tekeningen  
B-S1-B-05-01