

Valentijnkade

4-18










*Presentatie
fase Architectonisch Ontwerp
woningtypologieën*

datum 20 december 2023



architecten

| | | | | | | | | | | | | | | |
|----------|--|--------|-------|----------|--------|---------|---------|--------|---------|--------|---------|--------|--|----------|
| D3- 4K | | A2- 2K | C1-3K | Bsp-2-3K | A3- 2K | B- 2-3K | C1sp-3K | C1-3K | C1sp-3K | C1-3K | C1sp-3K | A5- 2K | | C2-3K |
| E- 5K | | A1- 2K | C- 3K | C- 3K | A3- 2K | C- 3K | Csp-3K | C- 3K | Csp-3K | C- 3K | Csp-3K | A4- 2K | | D2- 4K |
| E- 5K | | A1- 2K | C- 3K | C- 3K | A3- 2K | C- 3K | Csp-3K | C- 3K | Csp-3K | C- 3K | Csp-3K | A4- 2K | | D2- 4K |
| E- 5K | | A1- 2K | C- 3K | C- 3K | A3- 2K | C- 3K | Csp-3K | C- 3K | Csp-3K | C- 3K | Csp-3K | A4- 2K | | D2- 4K |
| E- 5K | | A1- 2K | C- 3K | C- 3K | A3- 2K | C- 3K | Csp-3K | C- 3K | Csp-3K | C- 3K | Csp-3K | A4- 2K | | D2- 4K |
| F1- Rowo | | G1- 3K | Fiets | Fiets | entree | D1- 4K | D1sp-4K | D1- 4K | D1sp-4K | D1- 4K | G2- 3K | G3- 2K | | F2- Rowo |

| type | | aantal 7 lagen |
|-----------------|---|--------------------|
| G woon-werk |  | 3 |
| F minder valide |  | 2 |
| E 5 K |  | 4 |
| D 4 K |  | 10 |
| C 3 K |  | 39 |
| B 2 - 3 K |  | 2 |
| A 2 K |  | 15 |
| fietsen |  | |
| verkeer |  | |
| Totaal | | 75 woningen |

OVERZICHT PVE

OVERZICHT SCHEMA
AANTAL WONINGEN & TYPOLOGIE

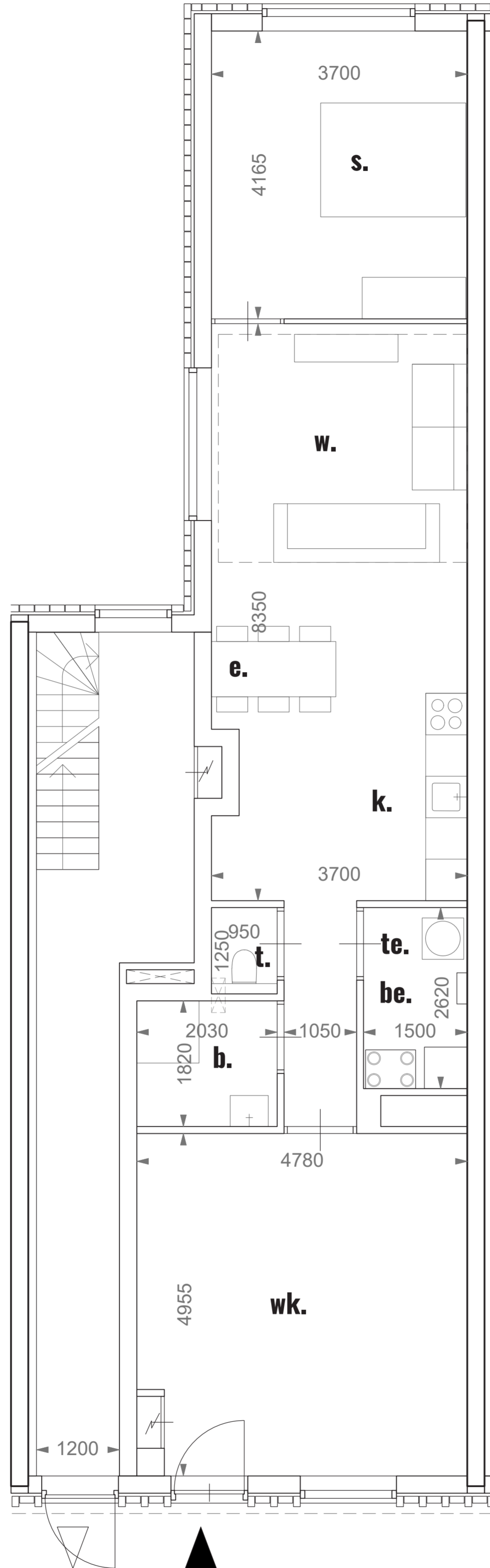
0m 0.5 1 2 1:50



- b. badkamer
- be. berging
- e. eetkamer
- h. hal
- k. keuken
- s. slaapkamer
- t. toilet
- te. techniek
- w. woonkamer
- bui. buitenruimte

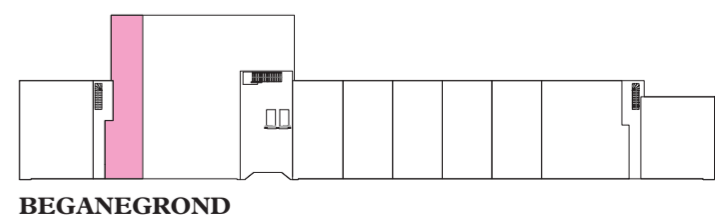
BVO : 127.5 m²
GBO : 109.5 m²

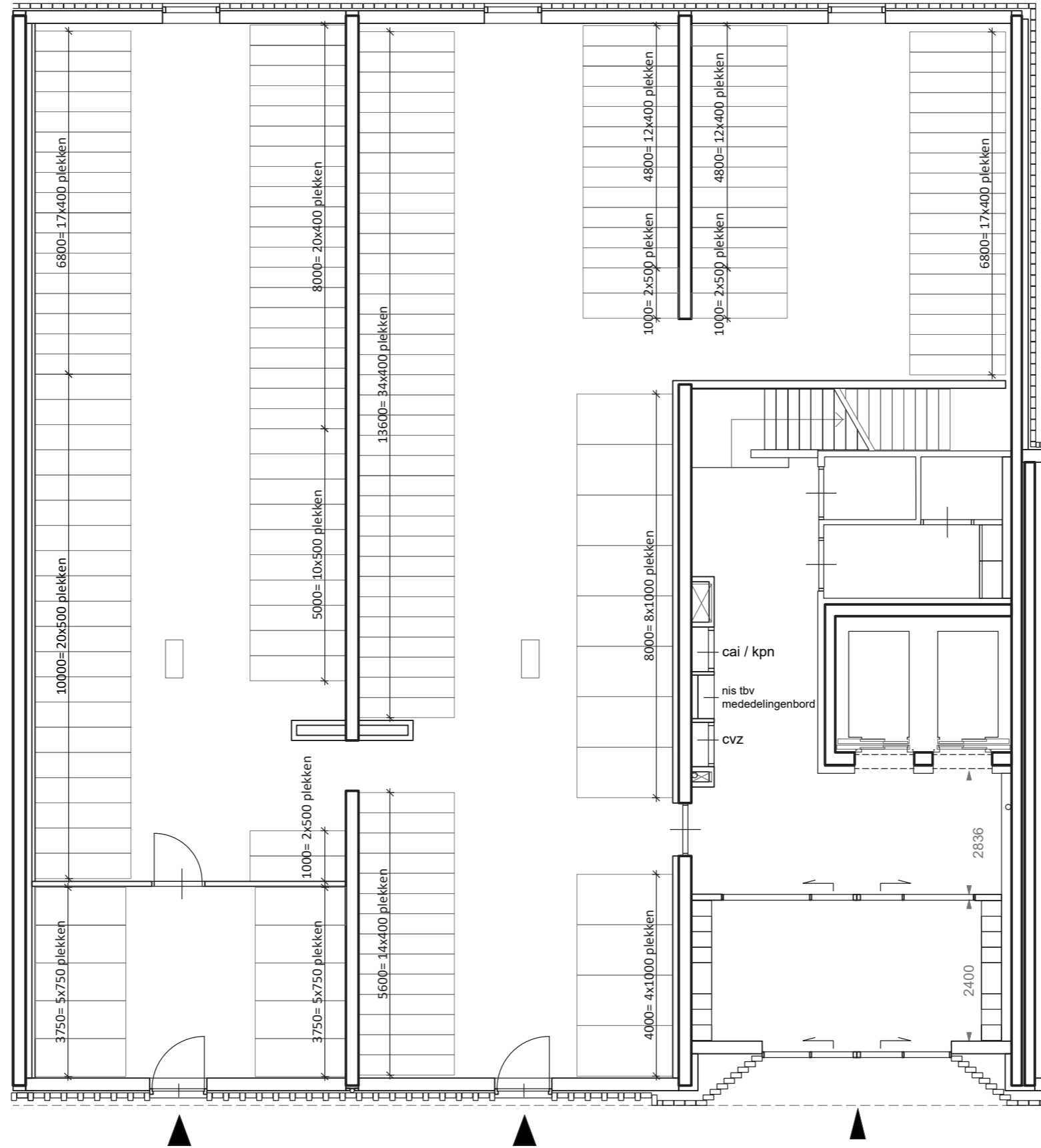
0m 0.5 1 2 1:50



- b. badkamer
- be. berging
- e. eetkamer
- h. hal
- k. keuken
- s. slaapkamer
- t. toilet
- te. techniek
- w. woonkamer
- wk. werkkamer
- bui. buitenruimte

BVO : 94.8 m²
 GBO : 83.5 m²

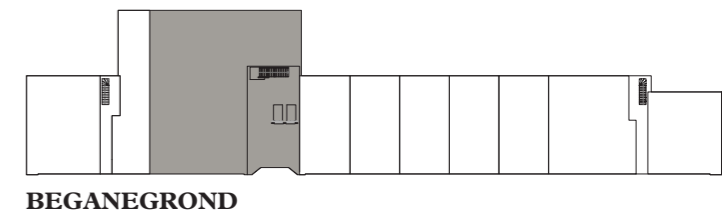




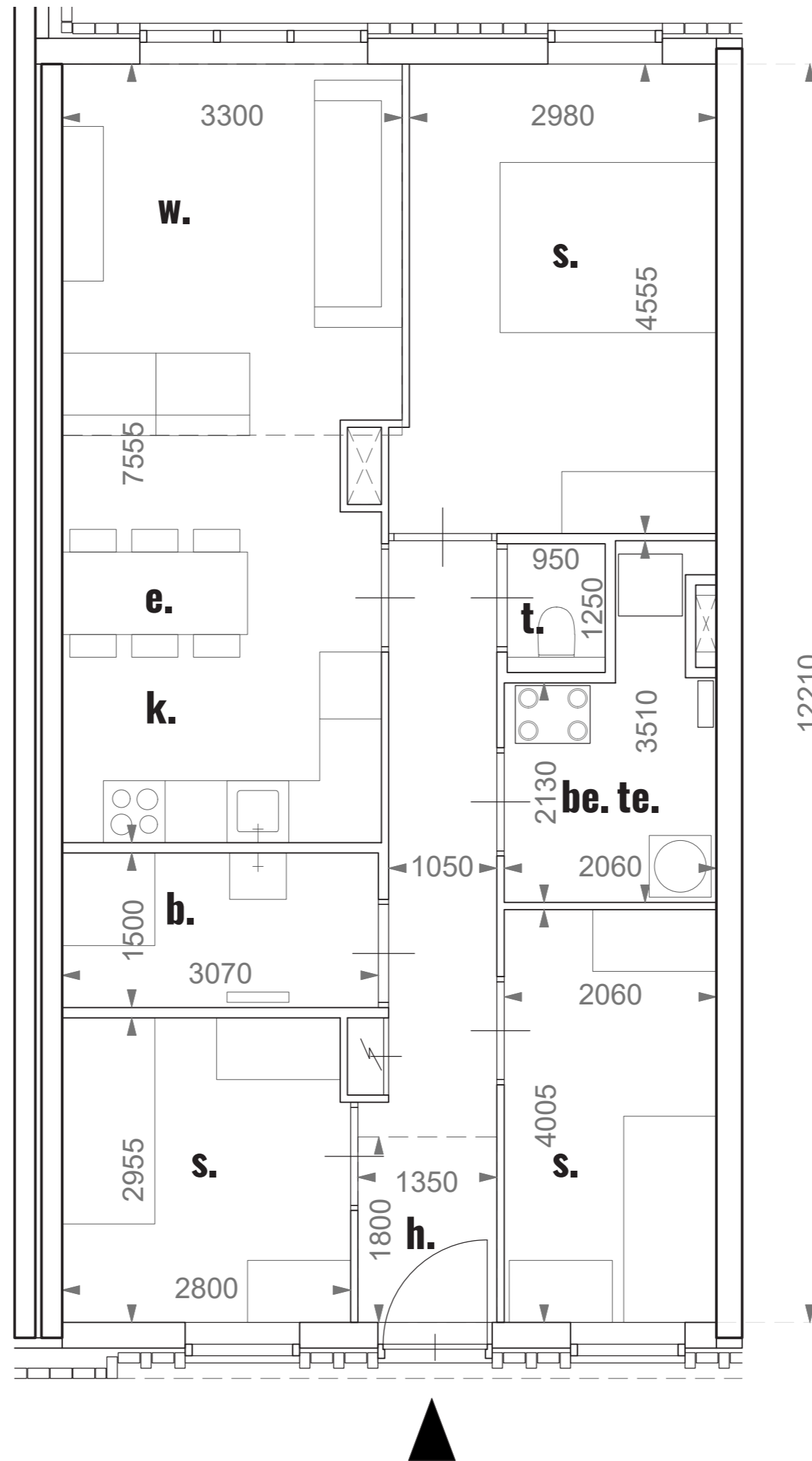
aantal plekken

- 12x 1000mm
- 36x 500mm
- 126x 400mm laag
- 63x 400mm hoog
- 10x 750mm scooter

totaal:
237 fietsplekken
(bij 50% gebruik hoge rekken 400mm)
10 scooterplekken

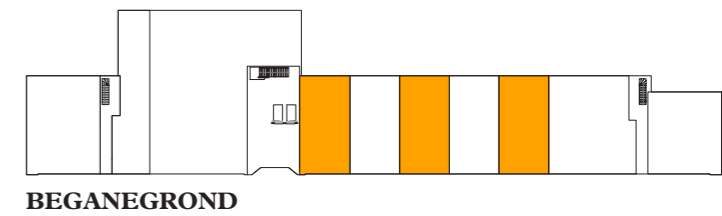


0m 0.5 1 2 1:50

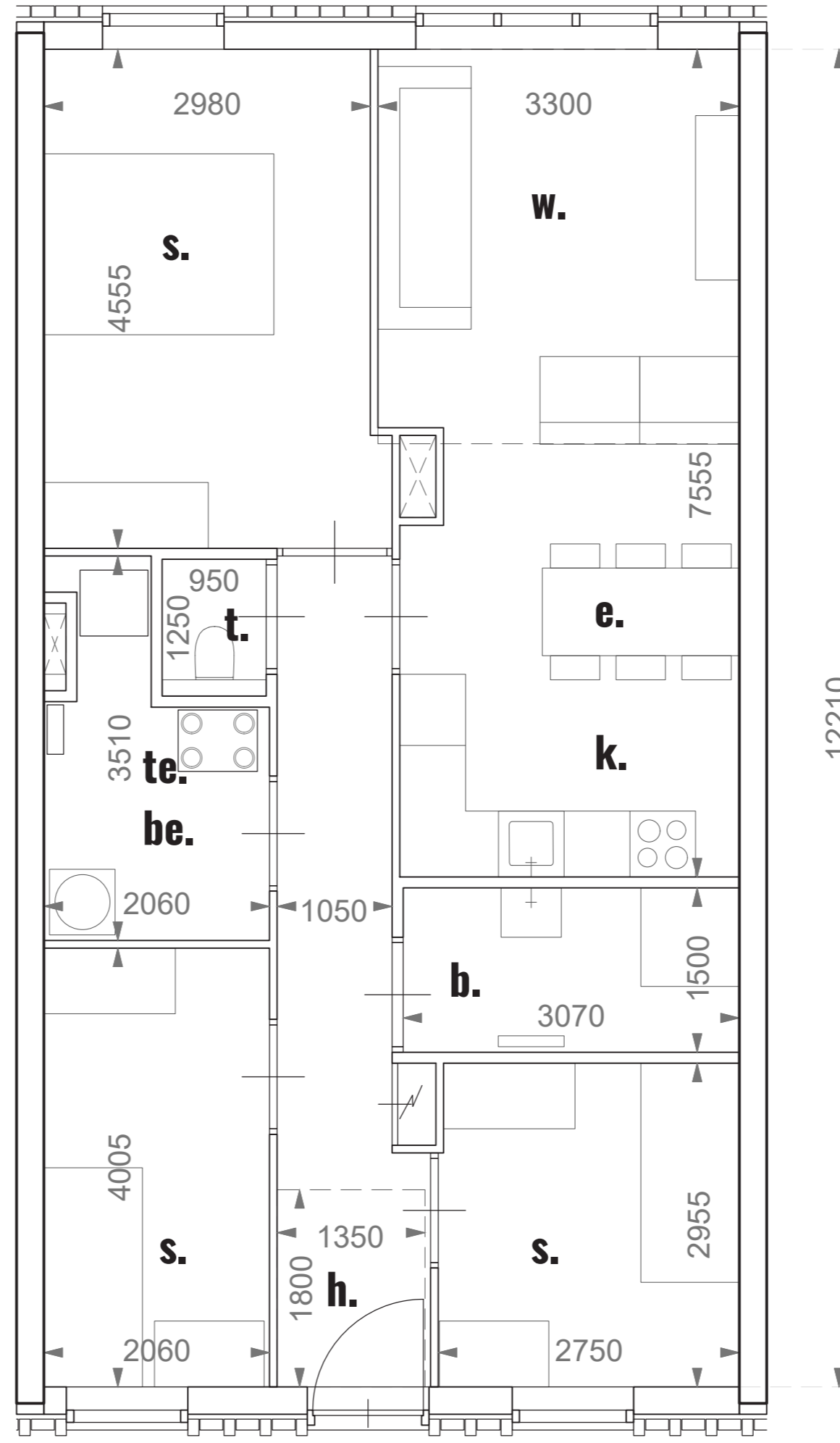


- b. badkamer
- be. berging
- e. eetkamer
- h. hal
- k. keuken
- s. slaapkamer
- t. toilet
- te. techniek
- w. woonkamer
- bui. buitenruimte

BVO : 86.2 m²
GBO : 77.5 m²

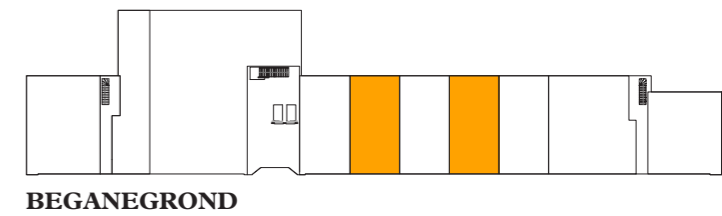


0m 0.5 1 2 1:50

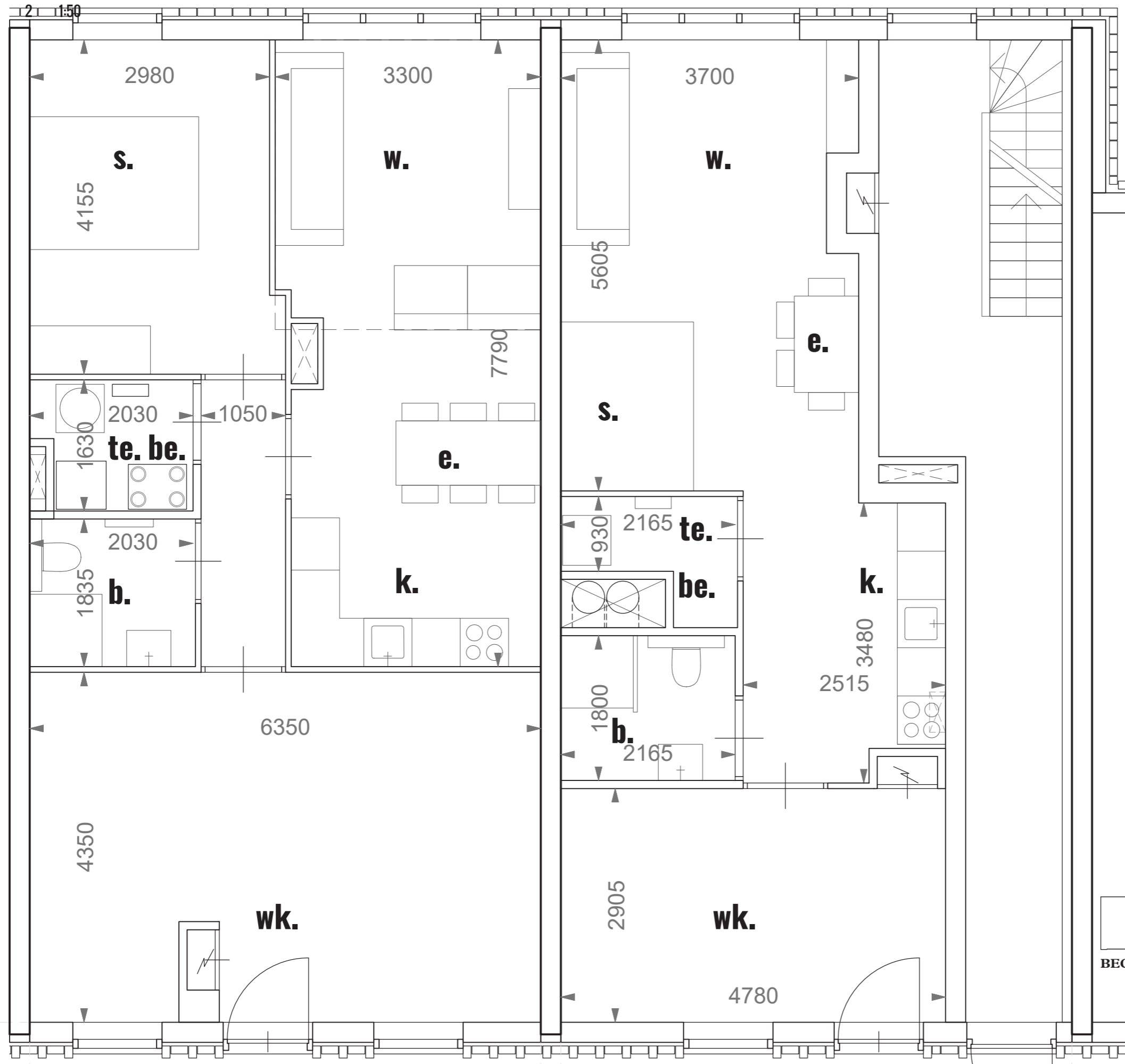


- b. badkamer
- be. berging
- e. eetkamer
- h. hal
- k. keuken
- s. slaapkamer
- t. toilet
- te. techniek
- w. woonkamer
- bui. buitenruimte

BVO : 86.2 m²
GBO : 77.5 m²



0m 0.5 1



- b. badkamer
- be. berging
- e. eetkamer
- h. hal
- k. keuken
- s. slaapkamer
- t. toilet
- te. techniek
- w. woonkamer
- wk. werkkamer
- bui. buitenruimte

BVO1 : 87.8 m²

GBO1 : 77.5 m²

BVO2 : 58.7 m²

GBO2 : 49.9 m²

WONINGTYPE G2-3KAMERWONING & G3-2 KAMERWONING
Beganegrond

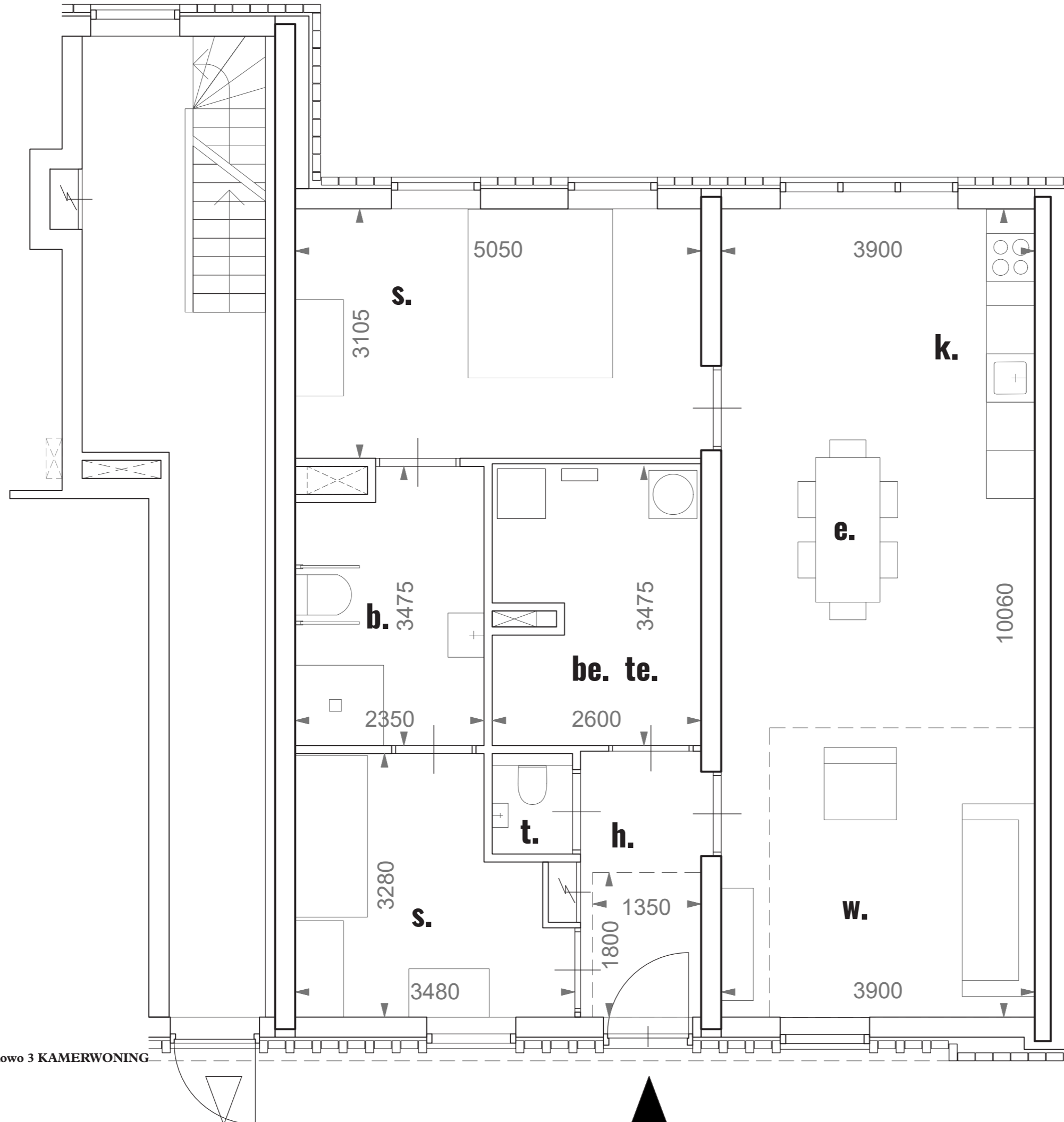


6350



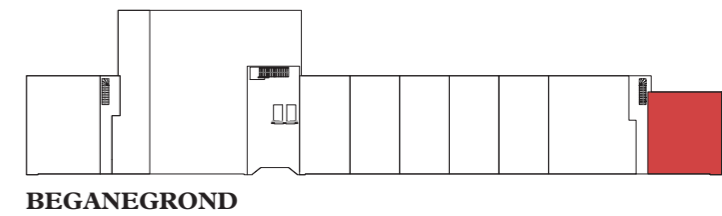
6350

0m 0.5 1 2 1:50



- b. badkamer
- be. berging
- e. eetkamer
- h. hal
- k. keuken
- s. slaapkamer
- t. toilet
- te. techniek
- w. woonkamer
- bui. buitenruimte

BVO : 107m²
GBO : 90.5 m²

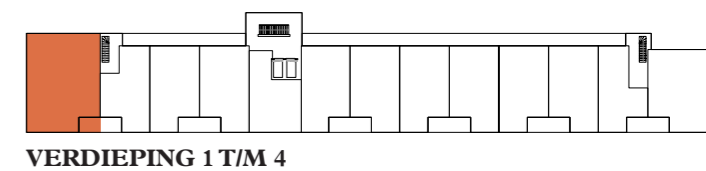


0m 0.5 1 2 1:50

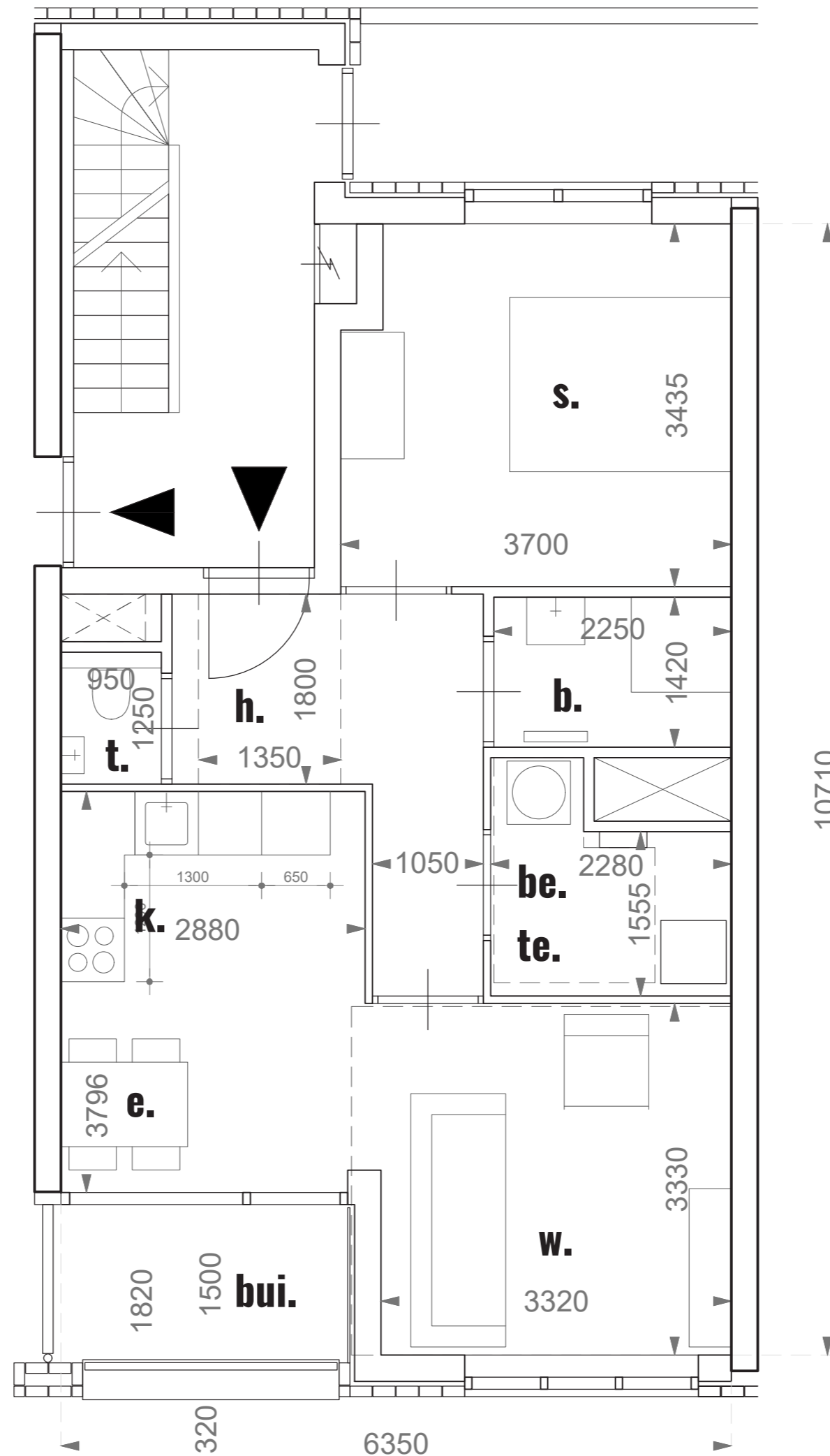


- b. badkamer
- be. berging
- e. eetkamer
- h. hal
- k. keuken
- s. slaapkamer
- t. toilet
- te. techniek
- w. woonkamer
- bui. buitenruimte

BVO : 123.7 m²
GBO : 106.5 m²

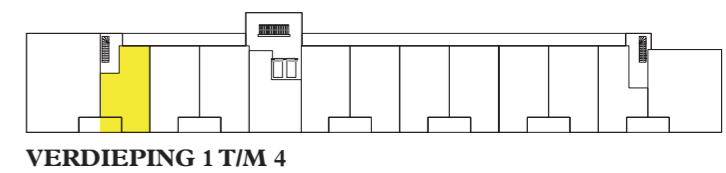


0m 0.5 1 2 1:50

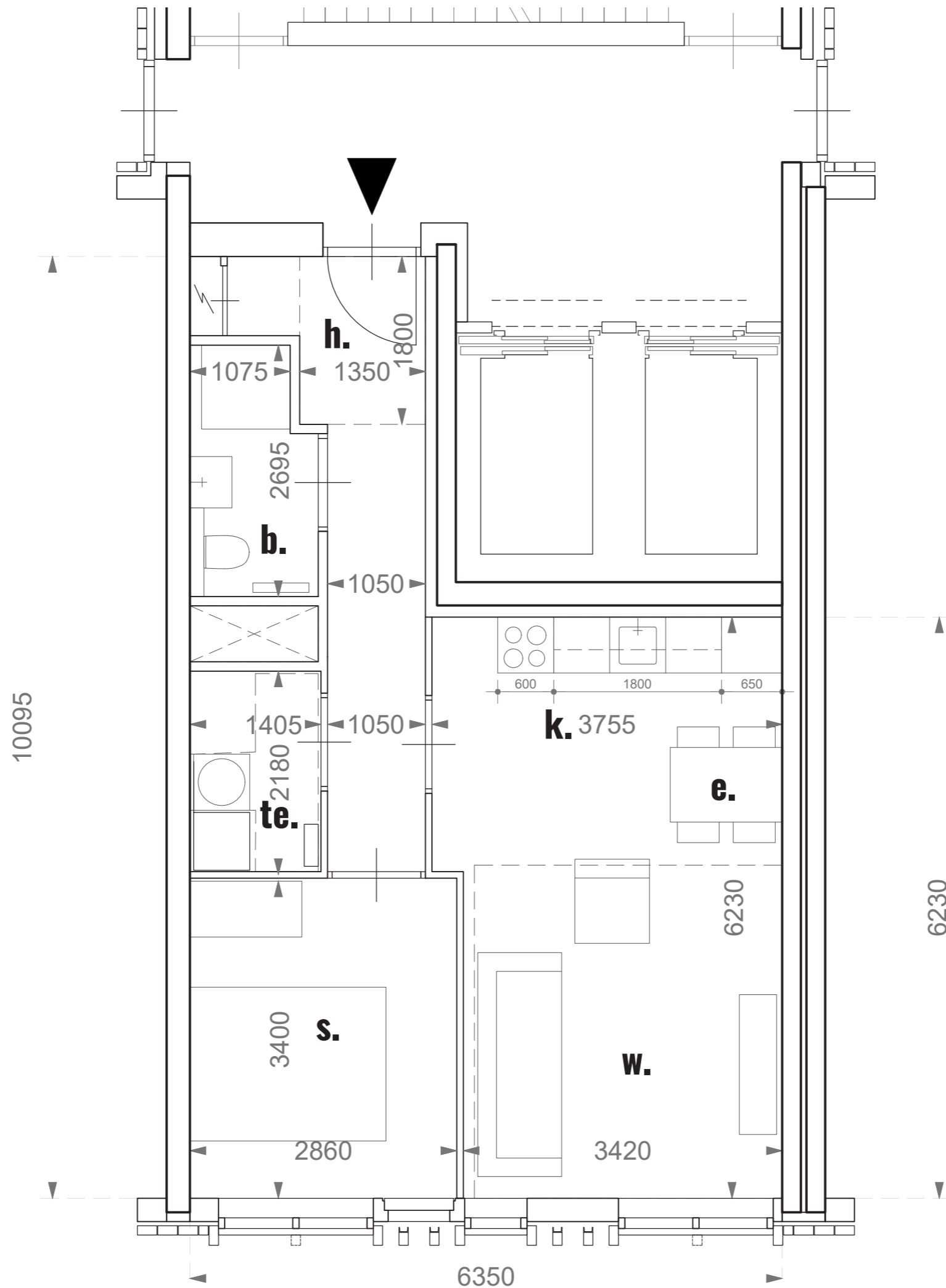


- b. badkamer
- be. berging
- e. eetkamer
- h. hal
- k. keuken
- s. slaapkamer
- t. toilet
- te. techniek
- w. woonkamer
- bui. buitenruimte

BVO : 60.2 m²
 GBO : 52.5 m²

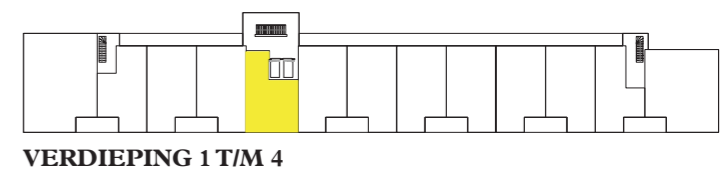


0m 0.5 1 2 1:50

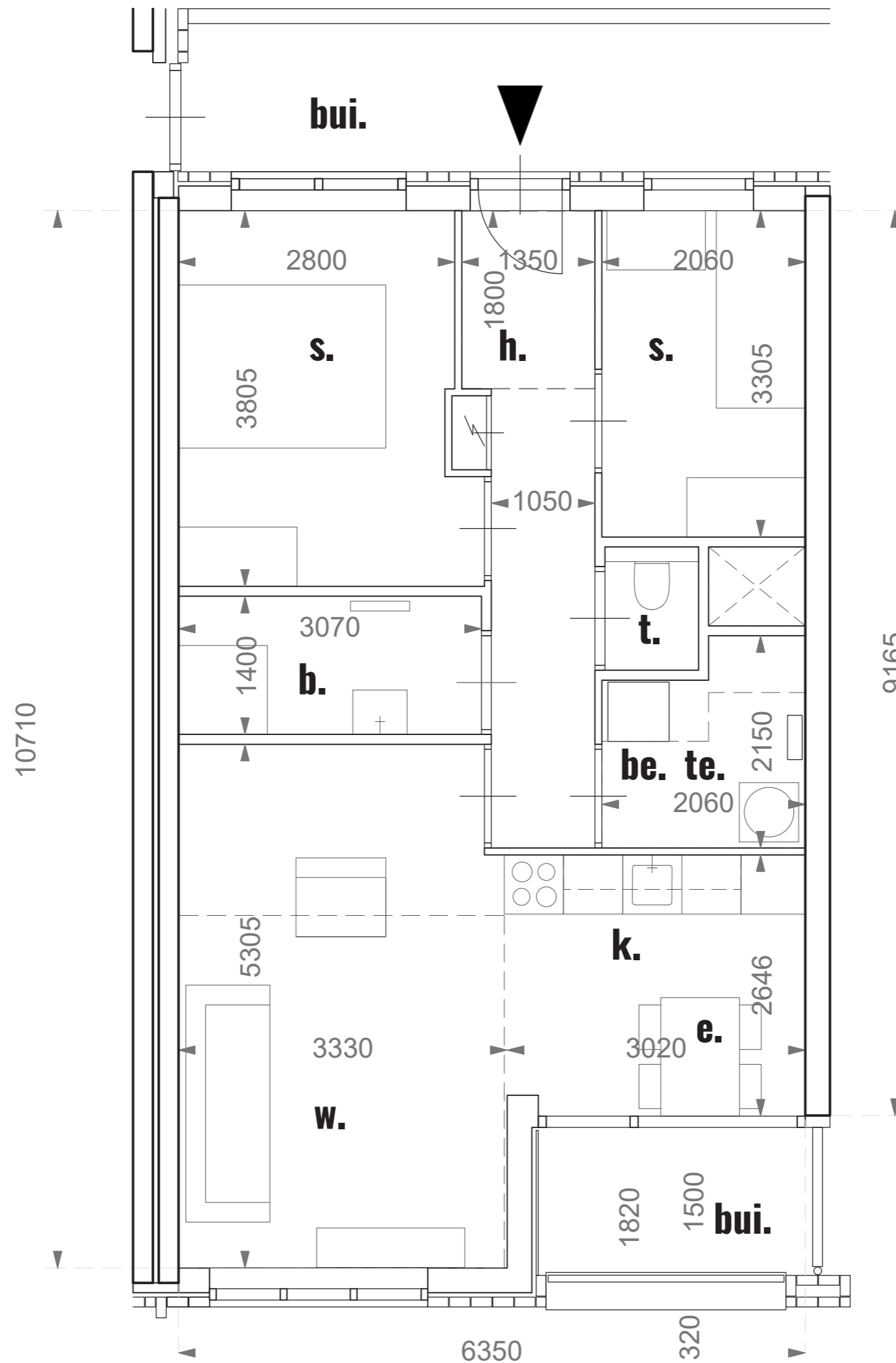


- b. badkamer
- be. berging
- e. eetkamer
- h. hal
- k. keuken
- s. slaapkamer
- t. toilet
- te. techniek
- w. woonkamer
- bui. buitenruimte

BVO : 58.9 m²
 GBO : 48 m²

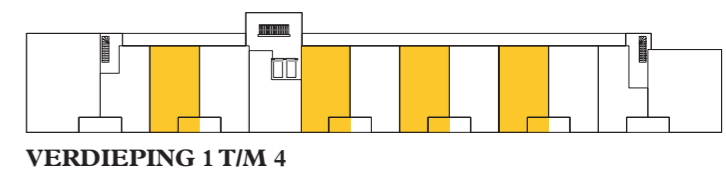


0m 0.5 1 2 1:50

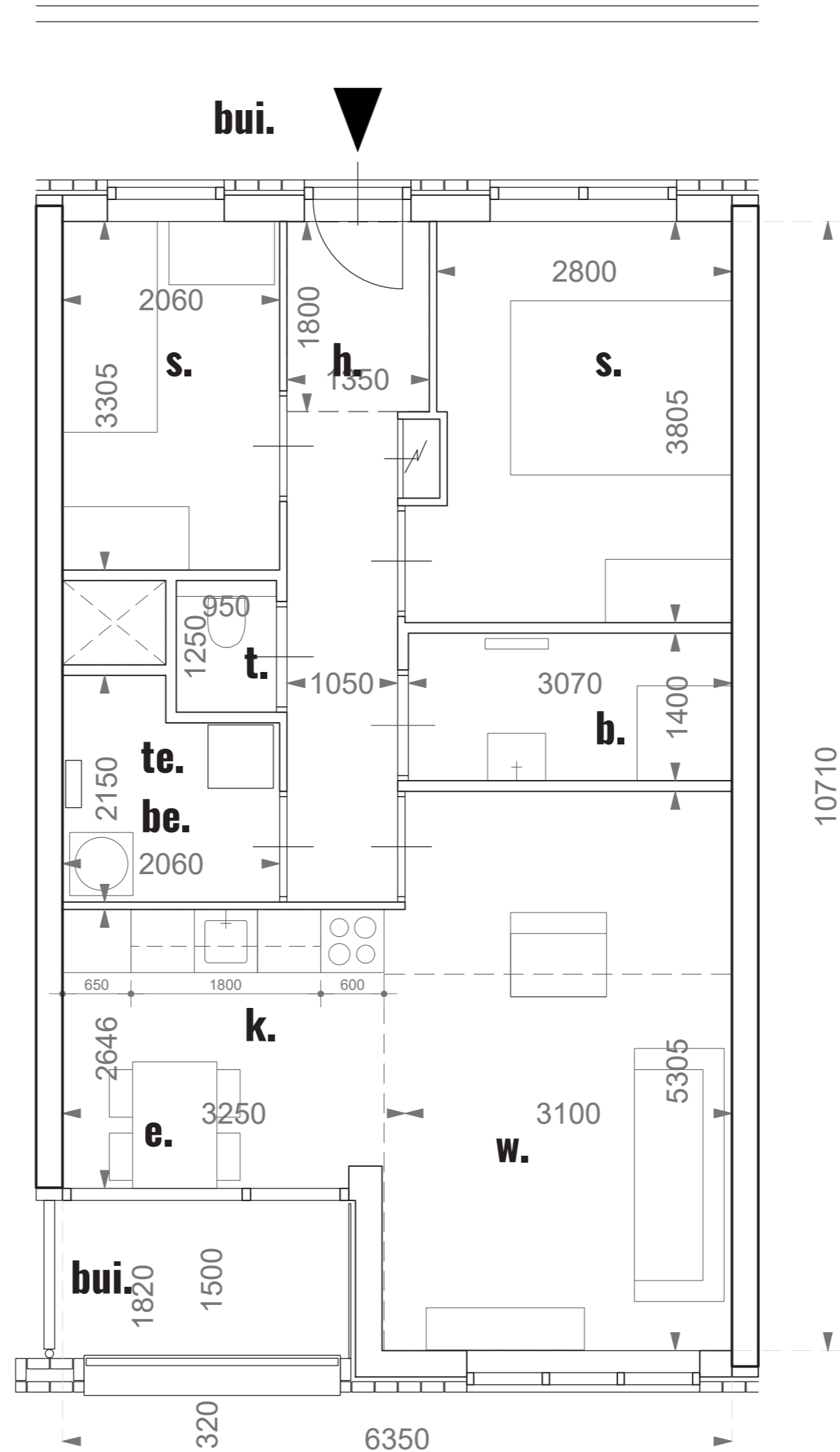


- b. badkamer
- be. berging
- e. eetkamer
- h. hal
- k. keuken
- s. slaapkamer
- t. toilet
- te. techniek
- w. woonkamer
- bui. buitenruimte

BVO : 70.5 m²
 GBO : 62.2 m²

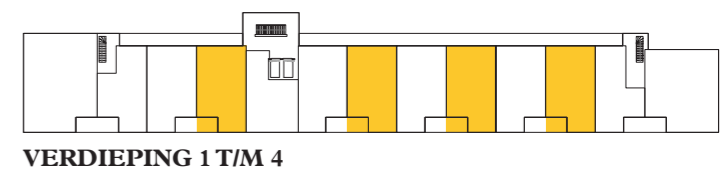


0m 0.5 1 2 1:50

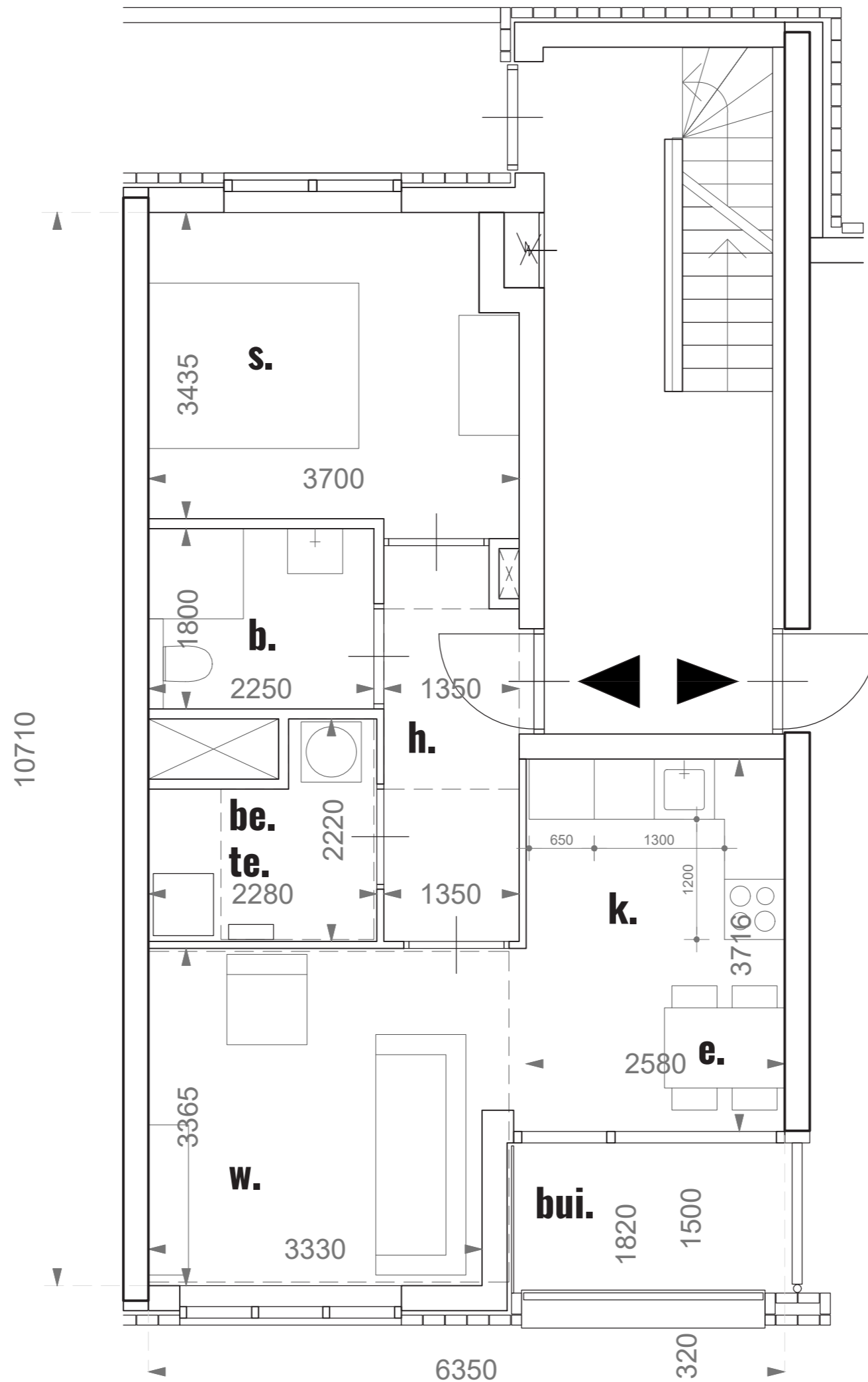


- b. badkamer
- be. berging
- e. eetkamer
- h. hal
- k. keuken
- s. slaapkamer
- t. toilet
- te. techniek
- w. woonkamer
- bui. buitenruimte

BVO : 70.5 m²
GBO : 62.2 m²

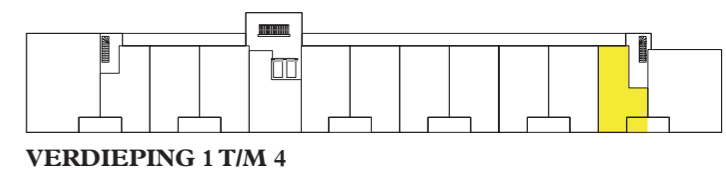


0m 0.5 1 2 1:50

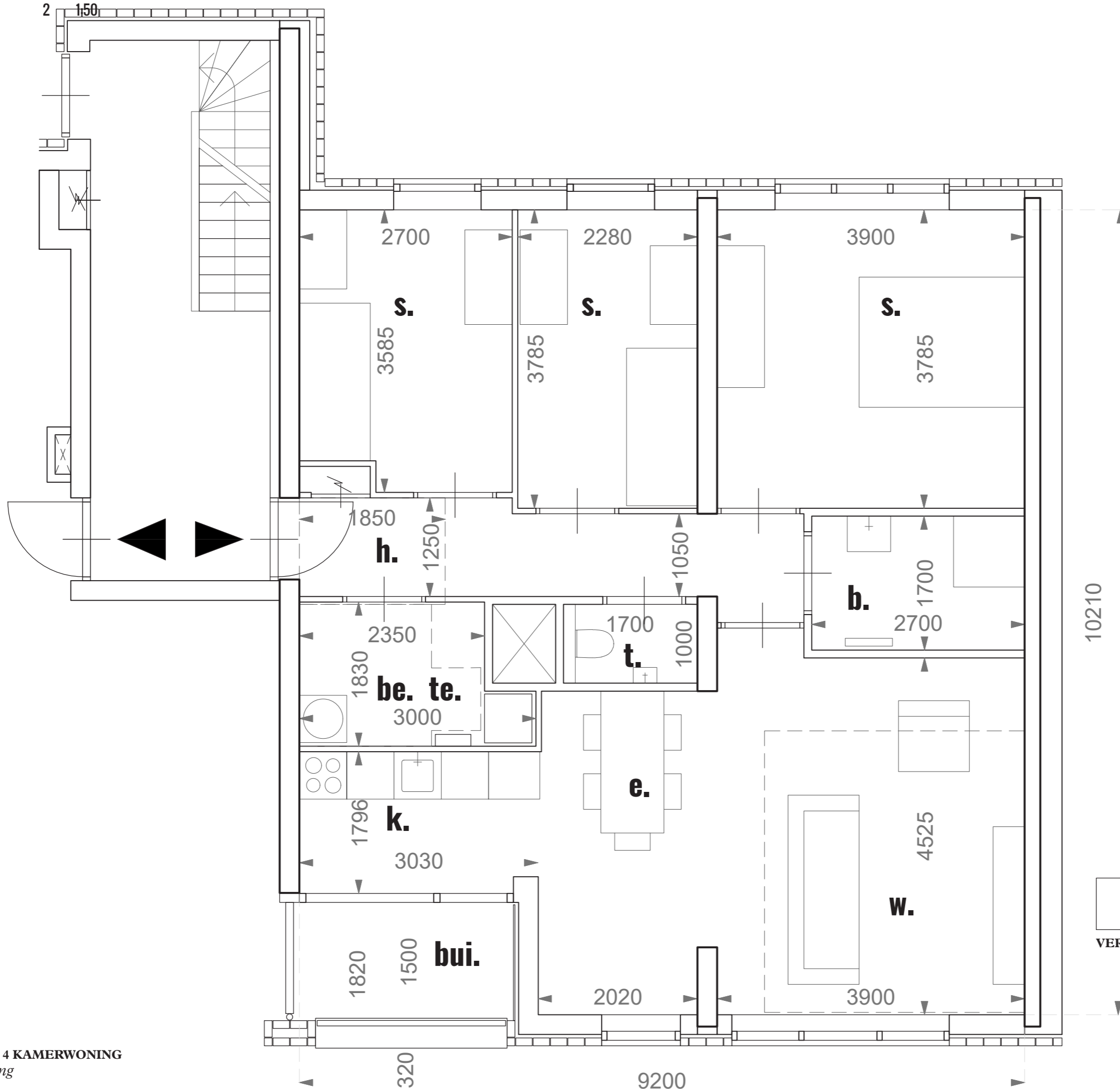


- b. badkamer
- be. berging
- e. eetkamer
- h. hal
- k. keuken
- s. slaapkamer
- t. toilet
- te. techniek
- w. woonkamer
- bui. buitenruimte

BVO : 55 m²
GBO : 47.5 m²

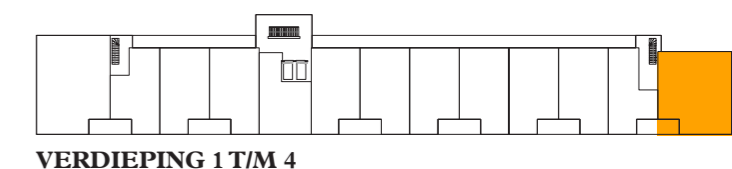


0m 0.5 1 2



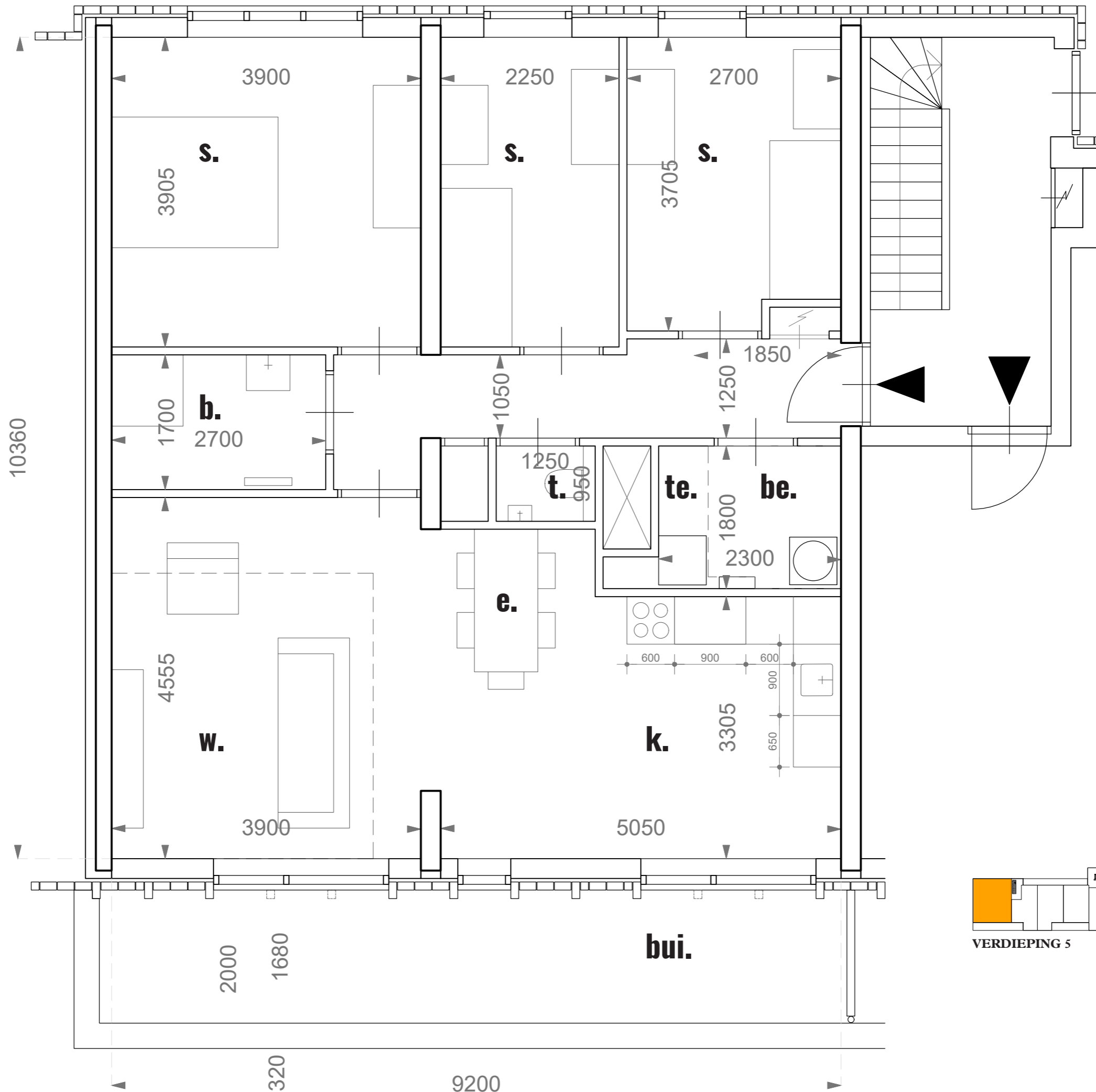
- b. badkamer
- be. berging
- e. eetkamer
- h. hal
- k. keuken
- s. slaapkamer
- t. toilet
- te. techniek
- w. woonkamer
- bui. buitenruimte

BVO : 102.6m²
GBO : 87 m²



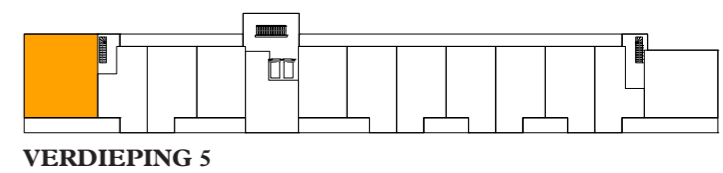
VERDIEPING 1 T/M 4

0m 0.5 1 2 1:50

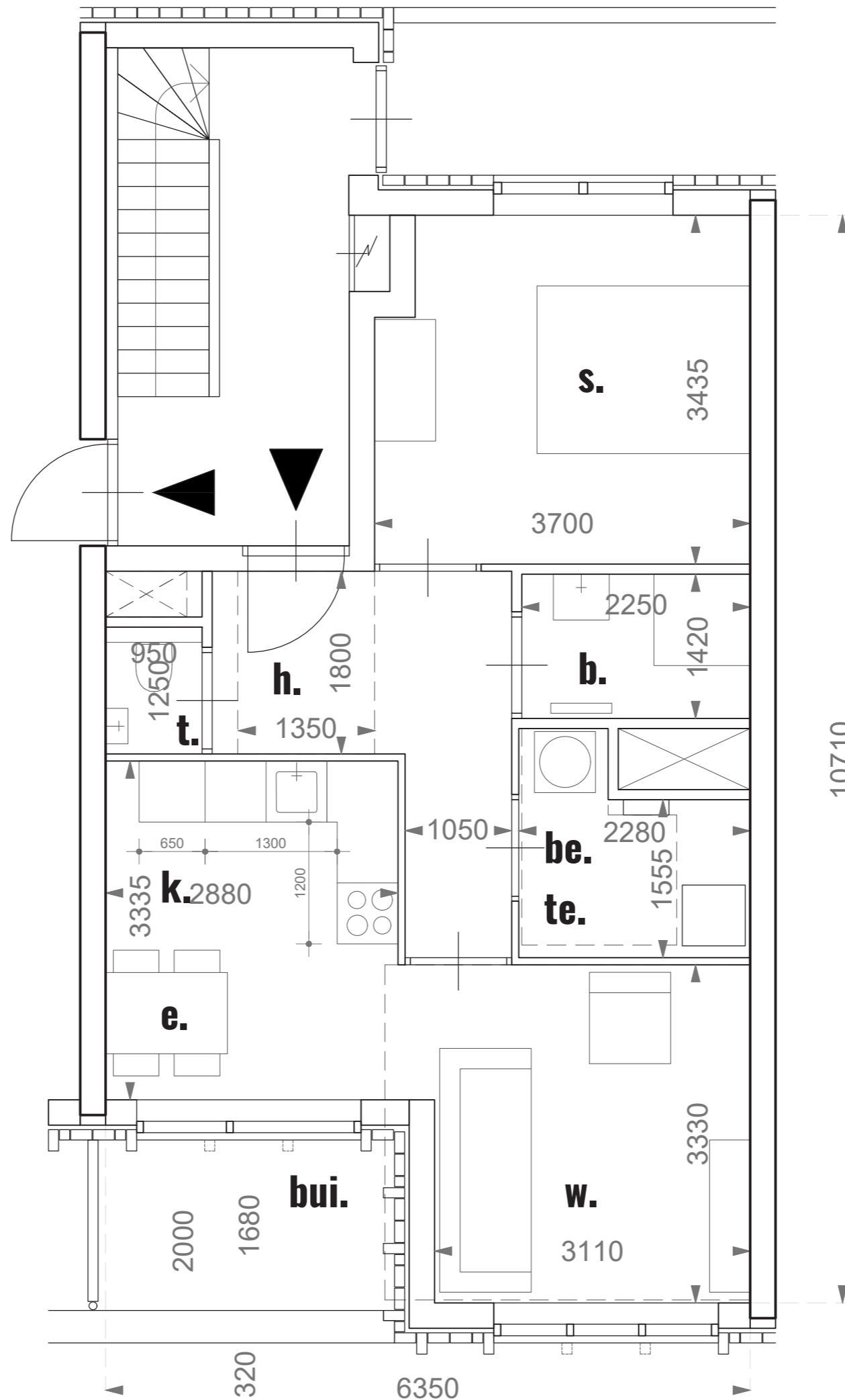


- b. badkamer
- be. berging
- e. eetkamer
- h. hal
- k. keuken
- s. slaapkamer
- t. toilet
- te. techniek
- w. woonkamer
- bui. buitenruimte

BVO : 109.2 m²
 GBO : 93.5 m²

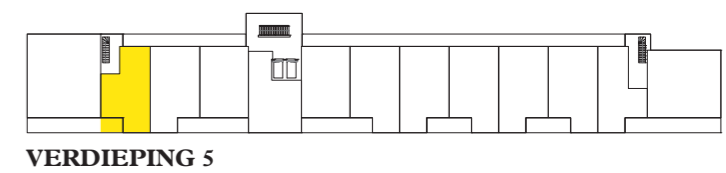


0m 0.5 1 2 1:50

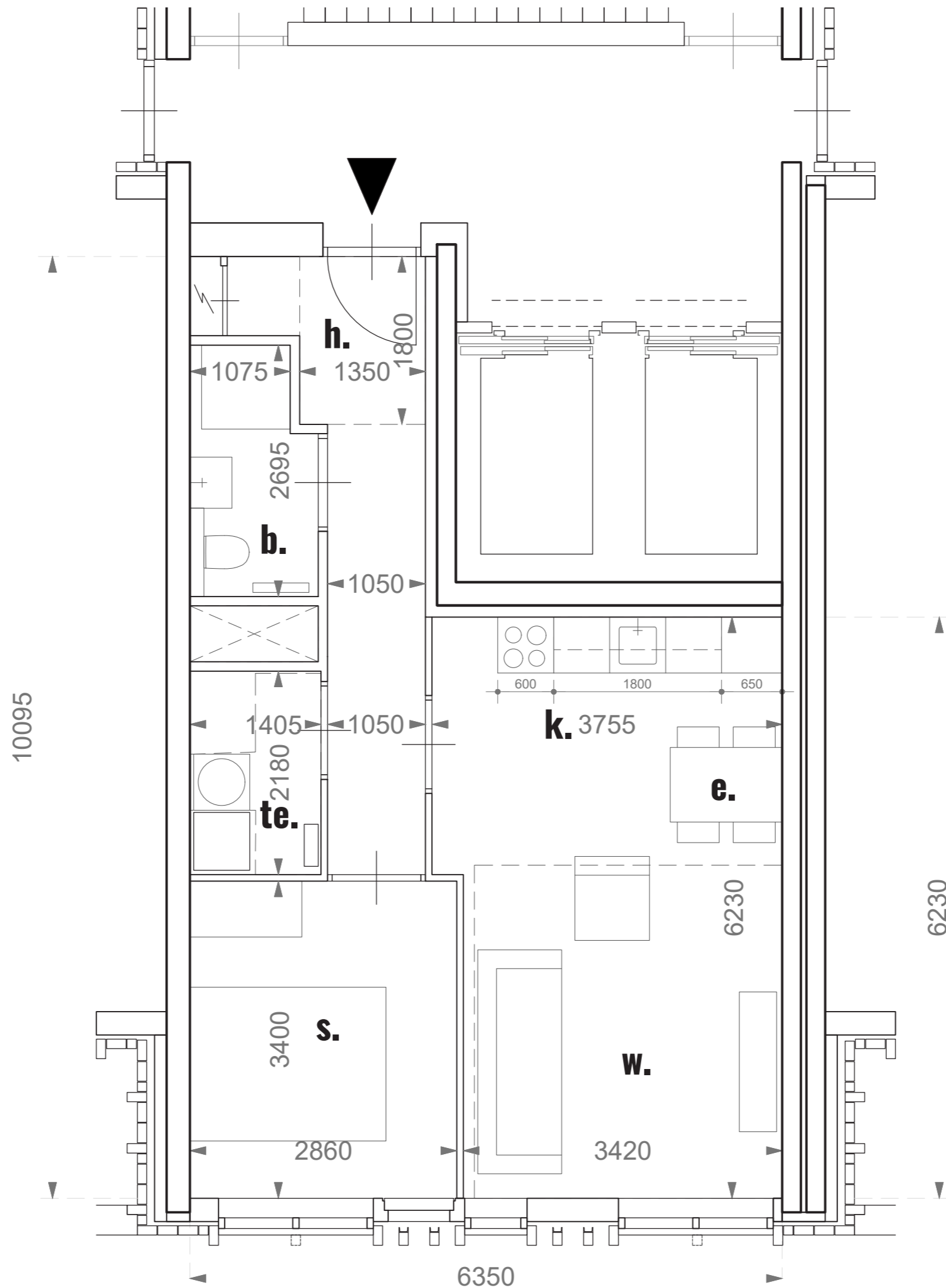


- b. badkamer
- be. berging
- e. eetkamer
- h. hal
- k. keuken
- s. slaapkamer
- t. toilet
- te. techniek
- w. woonkamer
- bui. buitenruimte

BVO : 59.5 m²
GBO : 50.8 m²

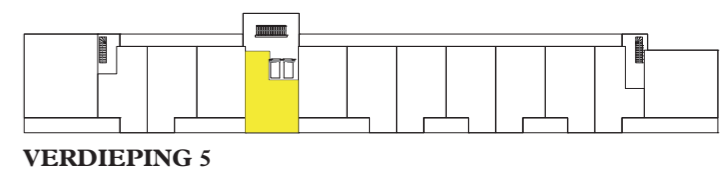


0m 0.5 1 2 1:50

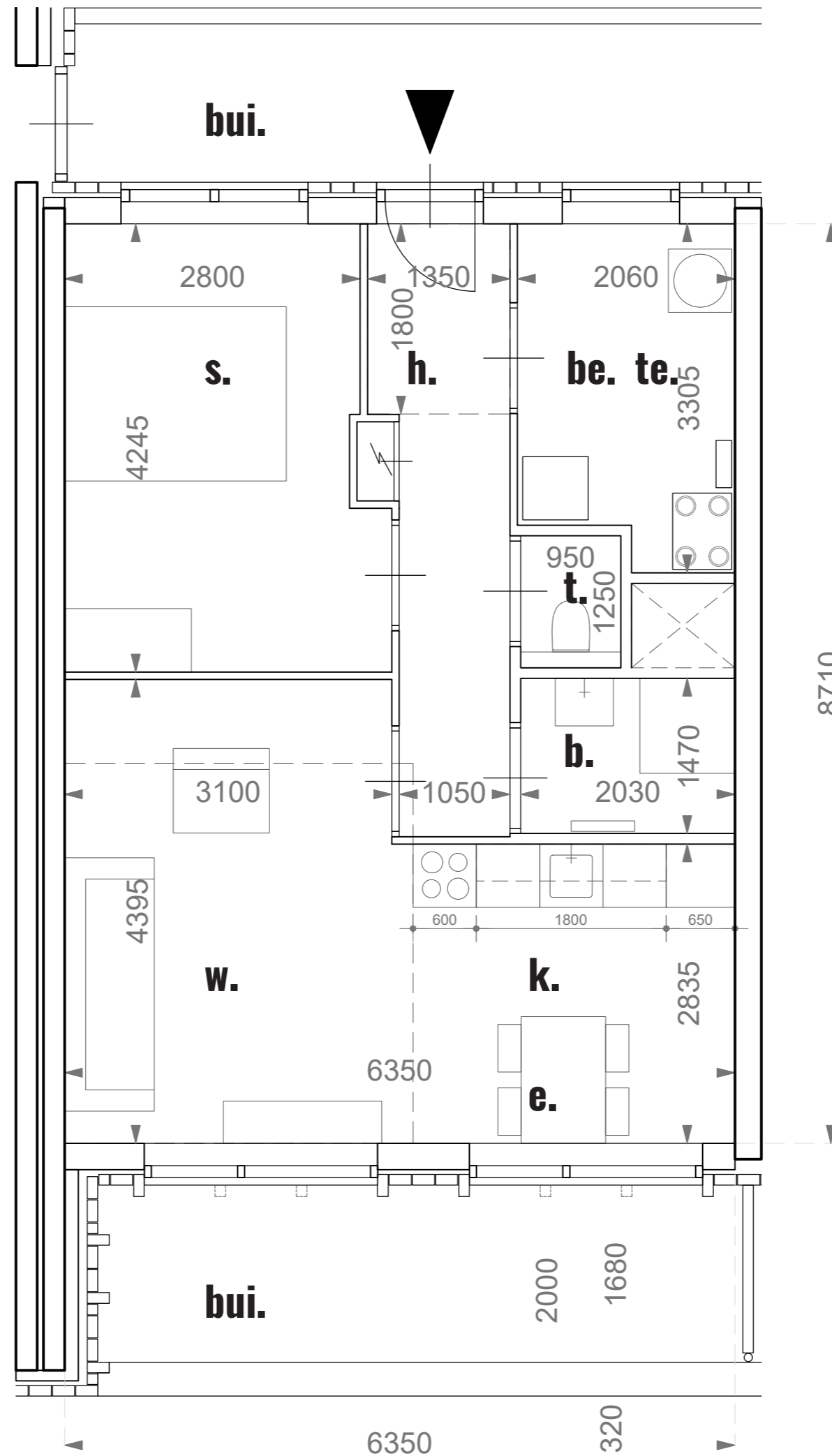


- b. badkamer
- be. berging
- e. eetkamer
- h. hal
- k. keuken
- s. slaapkamer
- t. toilet
- te. techniek
- w. woonkamer
- bui. buitenruimte

BVO : 58.9 m²
 GBO : 48 m²

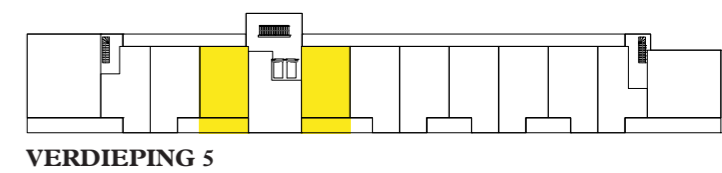


0m 0.5 1 2 1:50

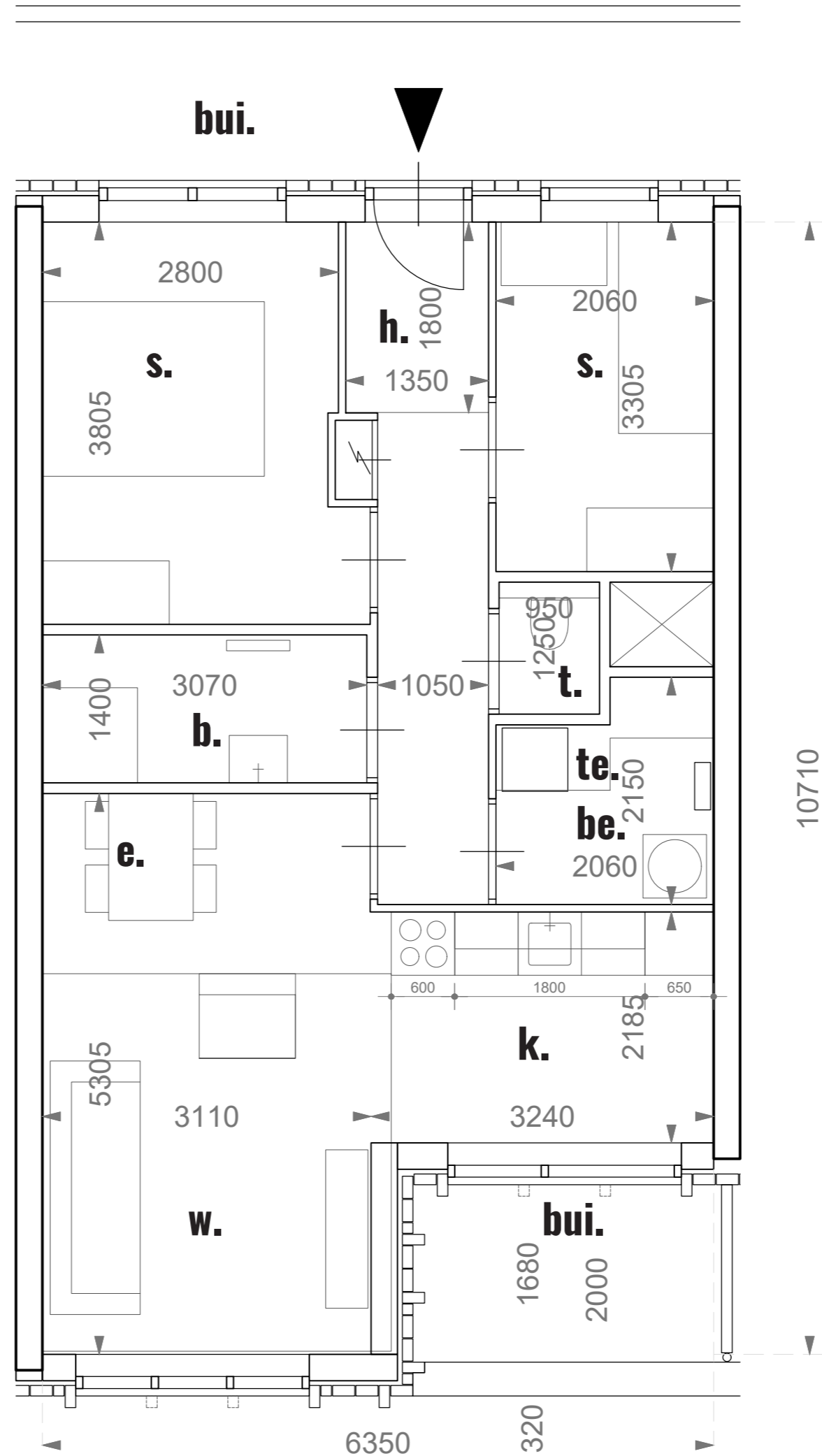


- b. badkamer
- be. berging
- e. eetkamer
- h. hal
- k. keuken
- s. slaapkamer
- t. toilet
- te. techniek
- w. woonkamer
- bui. buitenruimte

BVO : 63.7 m²
GBO : 54.2 m²



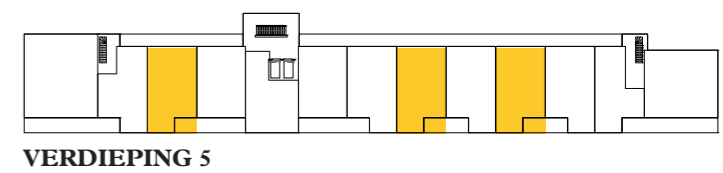
0m 0.5 1 2 1:50



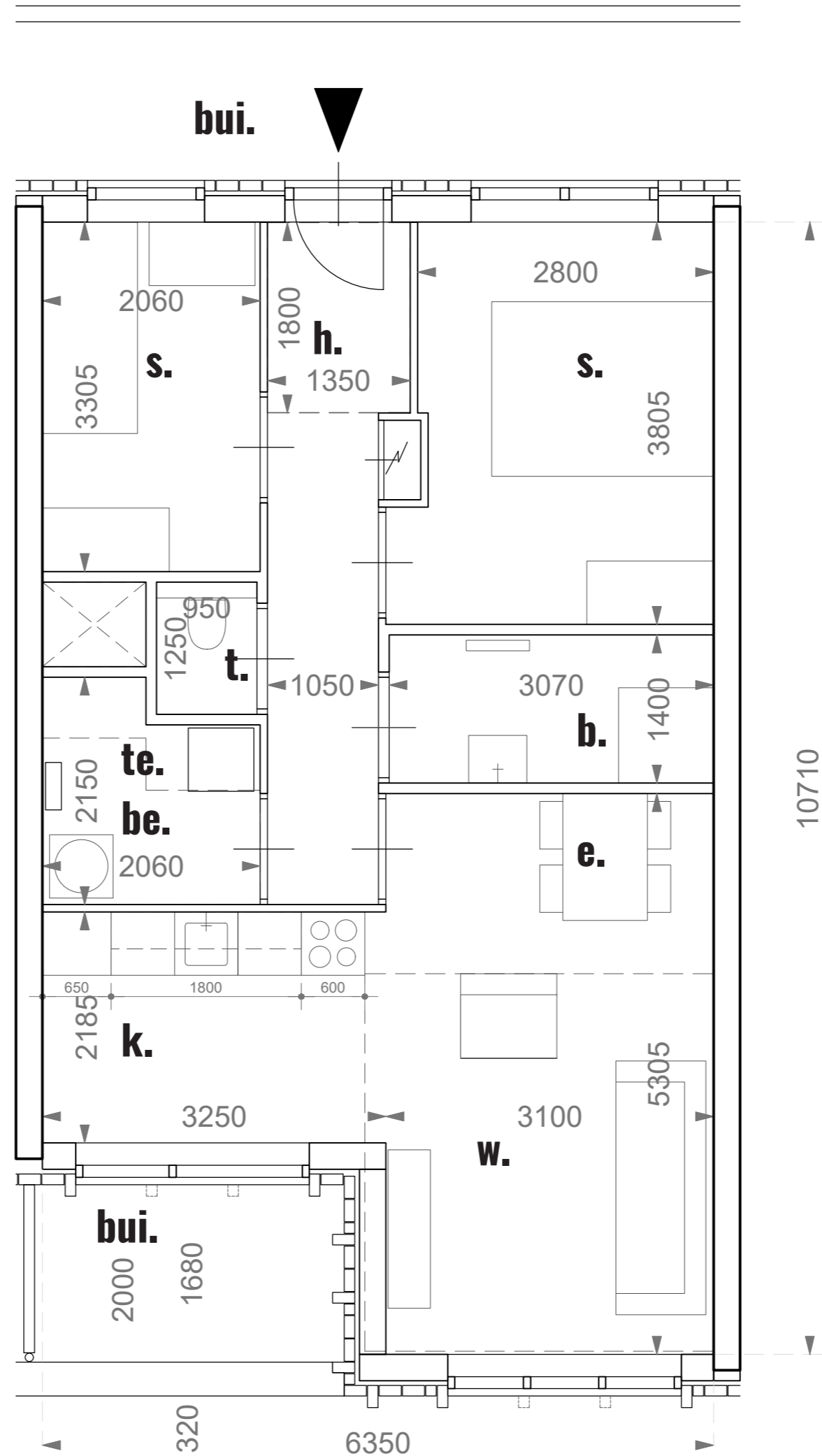
- b. badkamer
- be. berging
- e. eetkamer
- h. hal
- k. keuken
- s. slaapkamer
- t. toilet
- te. techniek
- w. woonkamer
- bui. buitenruimte

BVO : 70 m²

GBO : 60.5m²

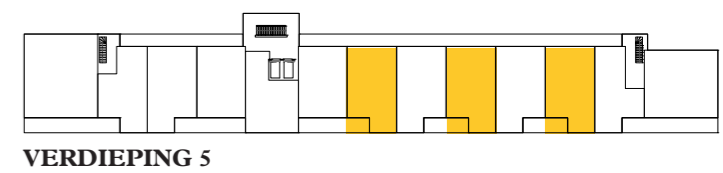


0m 0.5 1 2 1:50

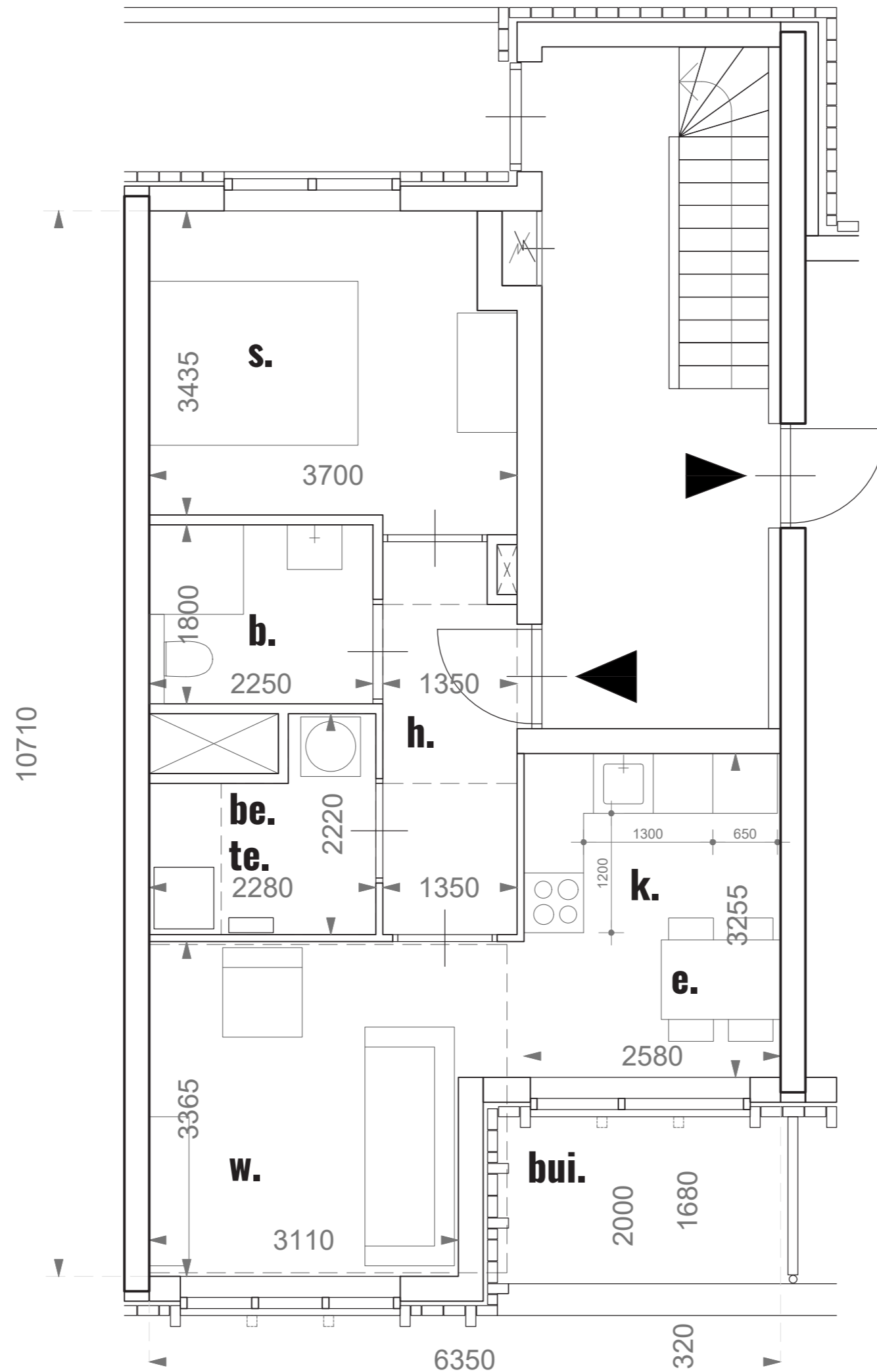


- b. badkamer
- be. berging
- e. eetkamer
- h. hal
- k. keuken
- s. slaapkamer
- t. toilet
- te. techniek
- w. woonkamer
- bui. buitenruimte

BVO : 70 m²
GBO : 60.5m²

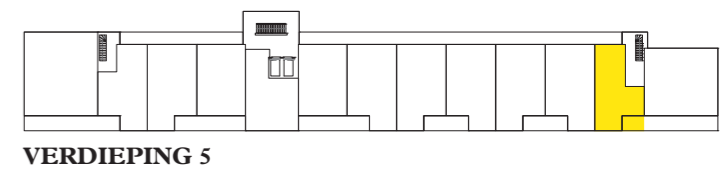


0m 0.5 1 2 1:50

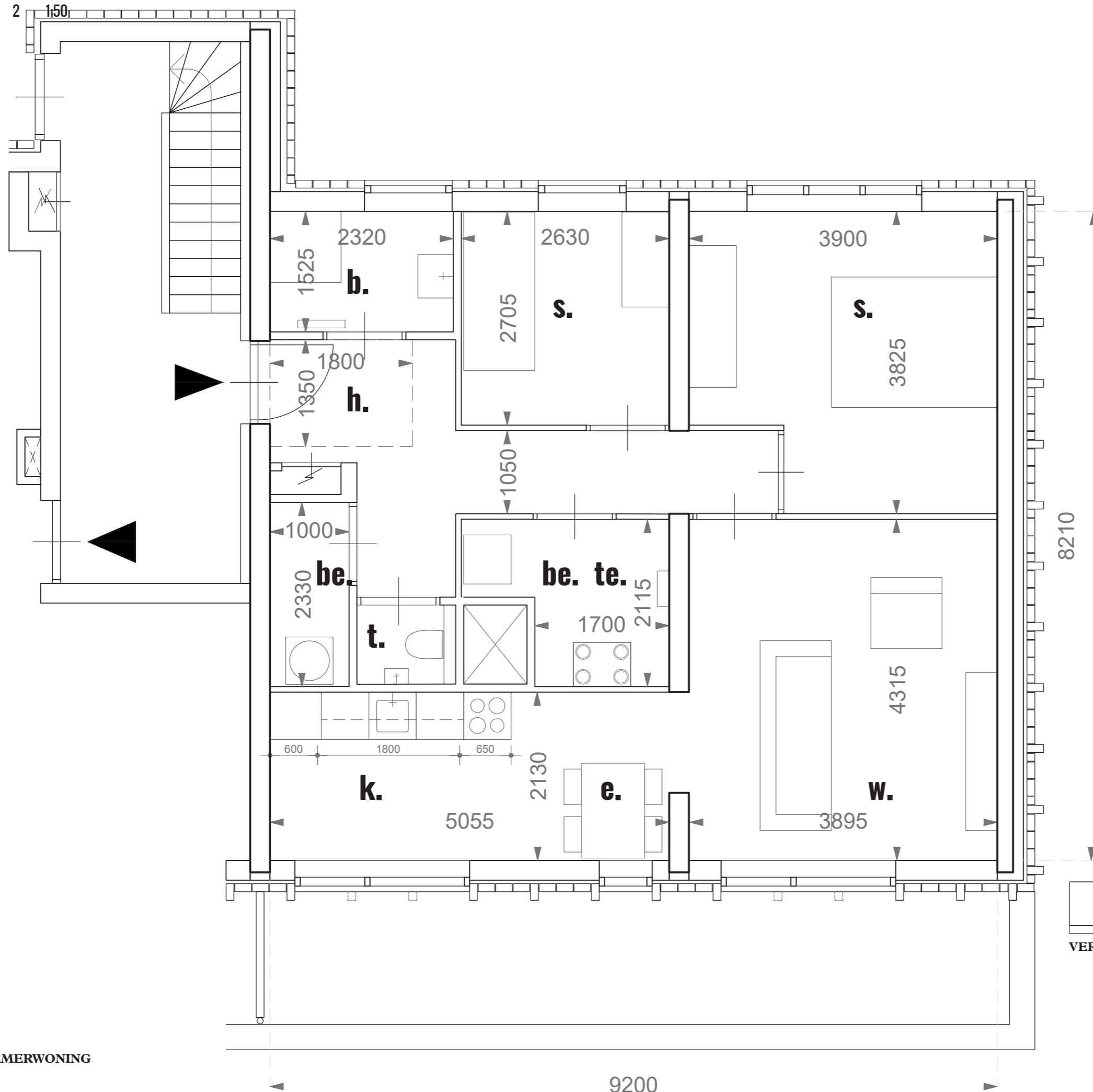


- b. badkamer
- be. berging
- e. eetkamer
- h. hal
- k. keuken
- s. slaapkamer
- t. toilet
- te. techniek
- w. woonkamer
- bui. buitenruimte

BVO : 54.2 m²
GBO : 45.5 m²



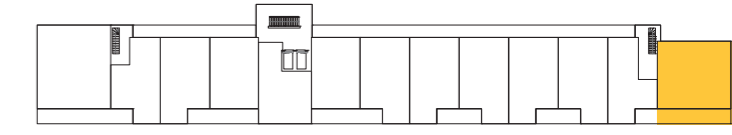
0m 0.5 1 2



- b. badkamer
- be. berging
- e. eetkamer
- h. hal
- k. keuken
- s. slaapkamer
- t. toilet
- te. techniek
- w. woonkamer
- bui. buitenruimte

BVO : 88m²
GBO : 73 m²

8210



VERDIEPING 5

| Type | BVO | GBO | aantal | BVO totaal | GBO totaal |
|--------|-------|-------|--------|------------|------------|
| A1 | 60,2 | 52,5 | 4 | 240,8 | 210 |
| A2 | 59,5 | 50,8 | 1 | 59,5 | 50,8 |
| A3 | 58,9 | 48 | 5 | 294,5 | 240 |
| A4 | 55 | 47,5 | 4 | 220 | 190 |
| A5 | 54,2 | 45,5 | 1 | 54,2 | 45,5 |
| B | 63,7 | 54,2 | 2 | 127,4 | 108,4 |
| C | 70,5 | 62,2 | 32 | 2256 | 1990,4 |
| C1 | 70 | 60,5 | 6 | 420 | 363 |
| C2 | 88 | 73 | 1 | 88 | 73 |
| D1 | 86,2 | 77,5 | 5 | 431 | 387,5 |
| D2 | 102,6 | 87 | 4 | 410,4 | 348 |
| D3 | 109,2 | 93,5 | 1 | 109,2 | 93,5 |
| E | 123,7 | 106,5 | 4 | 494,8 | 426 |
| F1 | 127,5 | 109,5 | 1 | 127,5 | 109,5 |
| F2 | 107 | 90,5 | 1 | 107 | 90,5 |
| G1 | 94,8 | 83,5 | 1 | 94,8 | 83,5 |
| G2 | 87,8 | 77,5 | 1 | 87,8 | 77,5 |
| G3 | 58,7 | 49,9 | 1 | 58,7 | 49,9 |
| TOTAAL | | | | 5681,6 | 4937 |

| Type | BVO | GBO | aantal | BVO totaal | GBO totaal |
|------------------------|-------|-------|--------|------------|------------|
| Entree | 92,6 | 82 | 1 | 92,6 | 82 |
| Fietsenstalling | 339,6 | 306,5 | 1 | 339,6 | 306,5 |
| Centraal trappenhuis | 53,3 | 43 | 5 | 266,5 | 215 |
| Linker trappenhuis BG | 26,9 | 20 | 1 | 26,9 | 20 |
| Linker trappenhuis | 15,4 | 11,2 | 5 | 77 | 56 |
| Rechter trappenhuis BG | 28,3 | 21 | 1 | 28,3 | 21 |
| Rechter trappenhuis | 21,5 | 15,7 | 5 | 107,5 | 78,5 |

| | | | | | |
|--------|--|--|--|-------|-----|
| TOTAAL | | | | 938,4 | 779 |
|--------|--|--|--|-------|-----|

| Verdieping | BVO verdieping | GBO verdieping | BVO galerij | BVO buitenruimte | BVO totaal |
|---------------|----------------|----------------|-------------|------------------|------------|
| Begane grond | 1394 | 1228 | 0 | 0 | 1394 |
| 1e verdieping | 1055,5 | 909 | 98 | 61,5 | 1215 |
| 2e verdieping | 1055,5 | 909 | 98 | 61,5 | 1215 |
| 3e verdieping | 1055,5 | 909 | 98 | 61,5 | 1215 |
| 4e verdieping | 1055,5 | 909 | 98 | 61,5 | 1215 |
| 5e verdieping | 1004 | 852 | 98 | 111,5 | 1213,5 |

| | | | | | |
|--------|------|------|-----|-------|--------|
| TOTAAL | 6620 | 5716 | 490 | 357,5 | 7467,5 |
|--------|------|------|-----|-------|--------|